

UNIVERSITY OF NEBRASKA AT KEARNEY



3 5085 00554 5298





BLUE AND GOLD

# The Blue and Gold

Kearney  
State Normal School

1921

Published by the Senior Class  
*Volume 7*

1921

## Dedication.

TO our class sponsors, Miss Abbott, Mr. Pate and Miss Knutzen, who have devoted years of untiring service to the class of 1921, who have been true friends to each one of us and steadfast and loyal to K. S. N. S.; with its memories of the class of 1921, we dedicate this "Blue & Gold"

BLUE AND GOLD



1921



BLUE AND GOLD

# GREETINGS.

And what is writ is writ,—  
Would it were worthier!  
—Lord Byron.

MARY LANTZ  
Jokes

ARTHUR PETSCH  
Cartoons

MABELLE WILKIE  
Social

CLARENCE EVANS  
Snap Shots

FLORENCE BRUCE  
Editor-in-Chief

VINNIE SHAWKEY  
Calender of Events

BERNICE ASHBURN  
Business Manager

ILLA WEEKS  
Sales Manager

KATHRYN MARTIN  
Associate Editor

1921



BLUE AND GOLD



1921

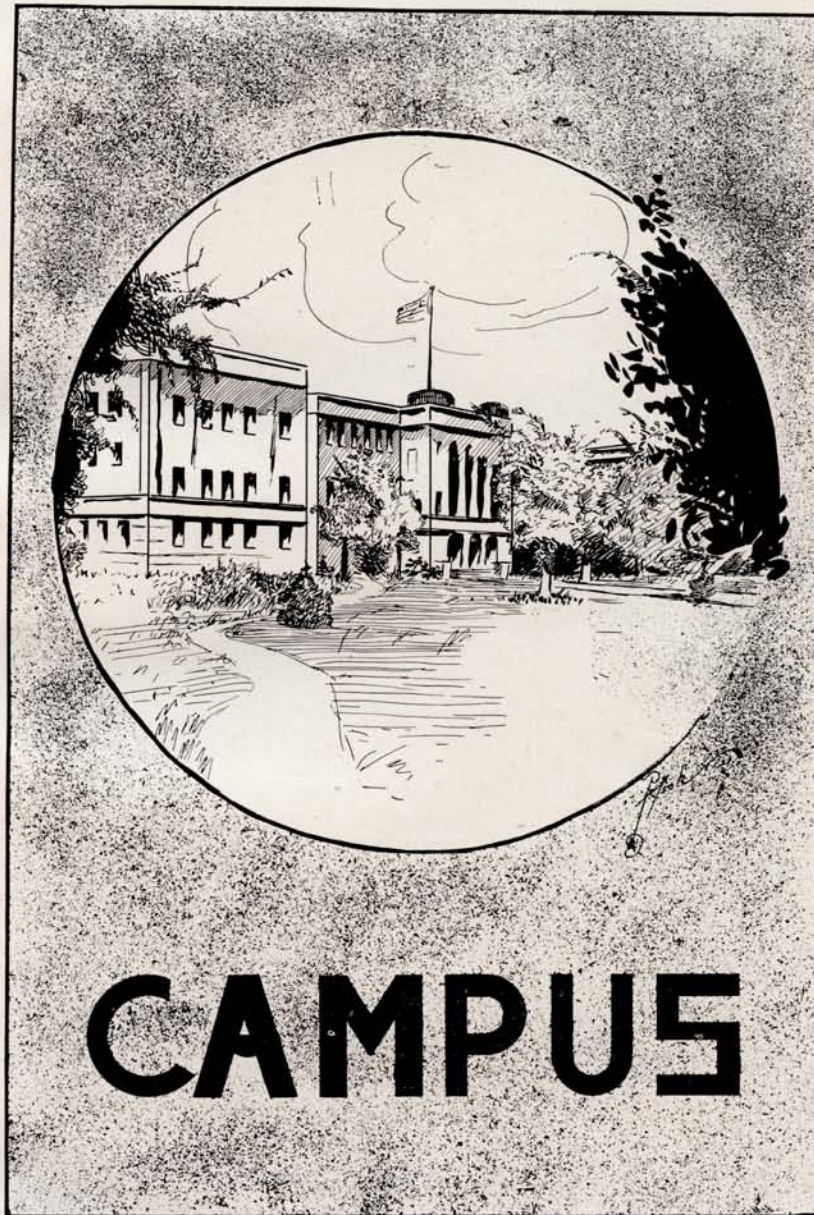


*Order of Books.*

Book I.....	Campus
Book II.....	Faculty
Book III.....	Classes
Book IV.....	Organizations
Book V.....	Athletics
Book VI.....	School Life
Book VII.....	Advertisements and Jokes



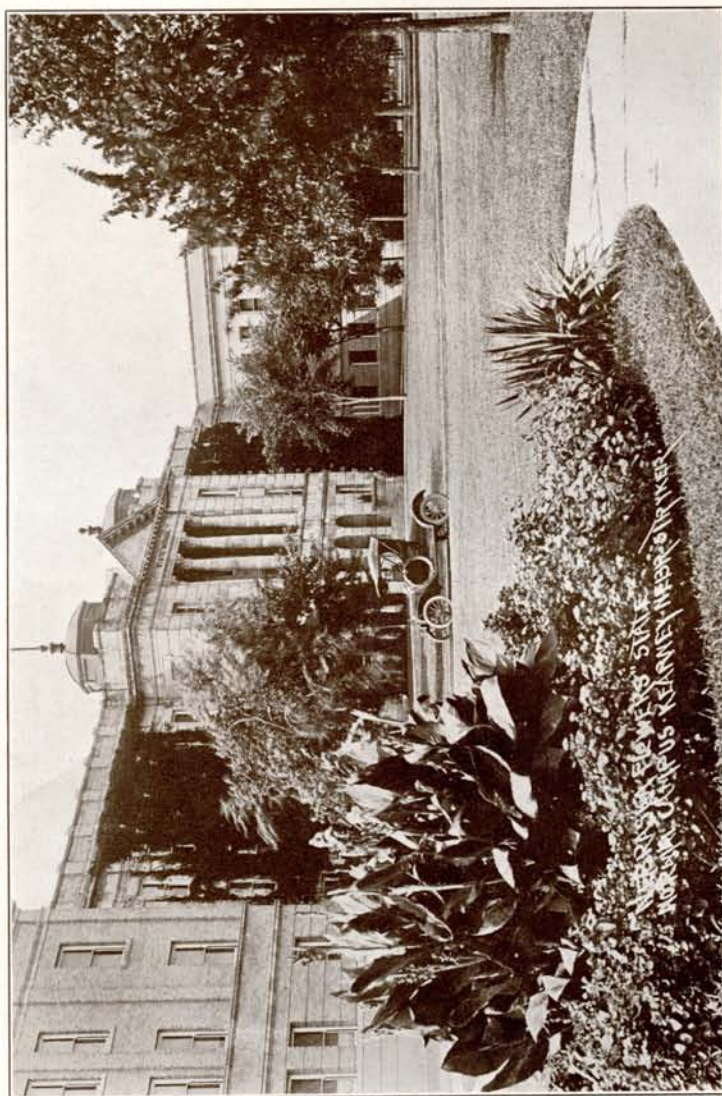
BLUE AND GOLD



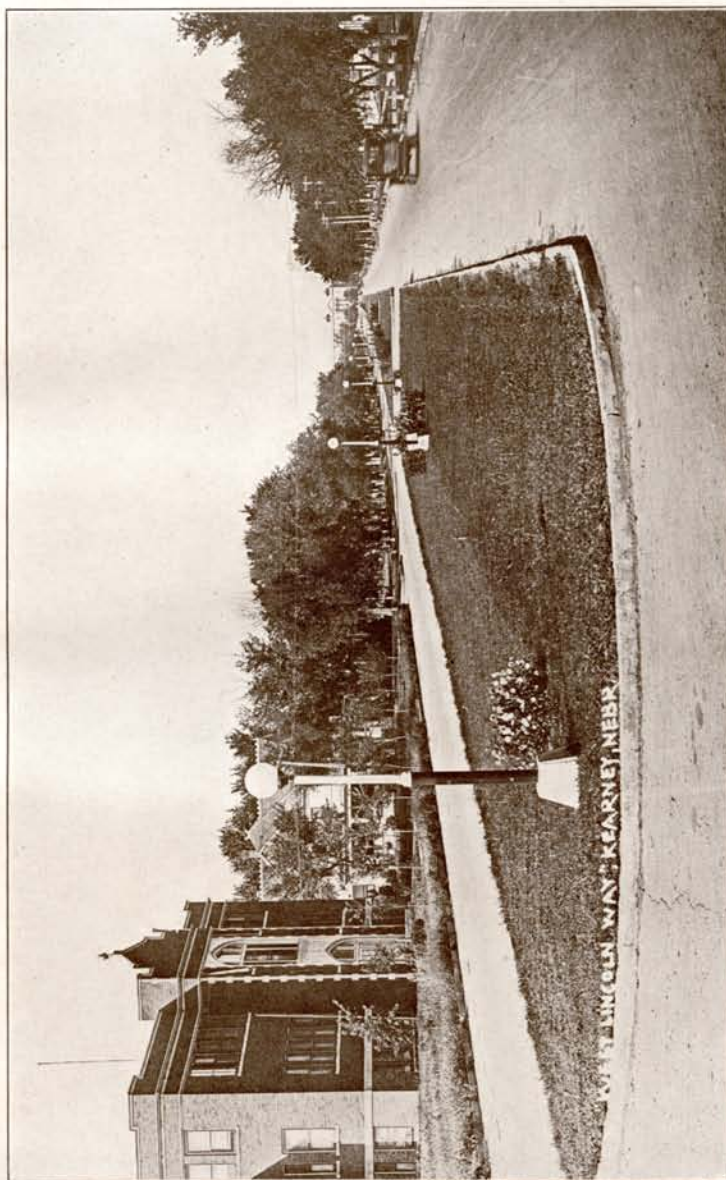
**CAMPUS**

1921



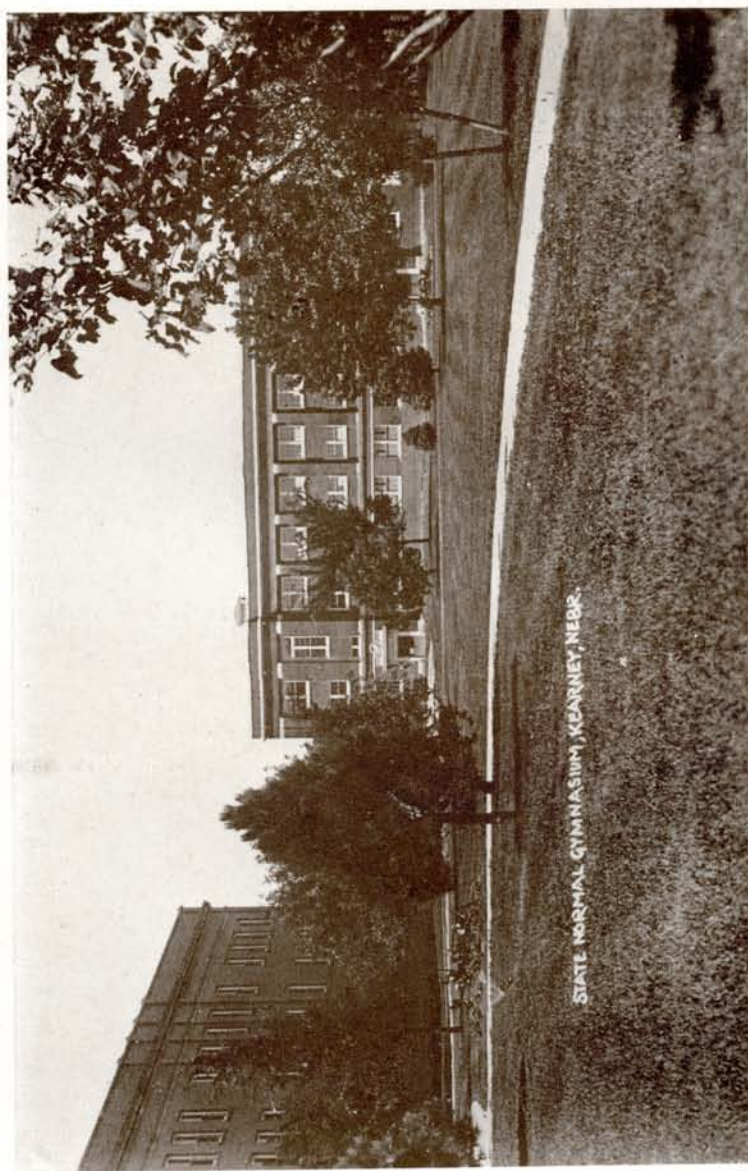


MAIN BUILDING.



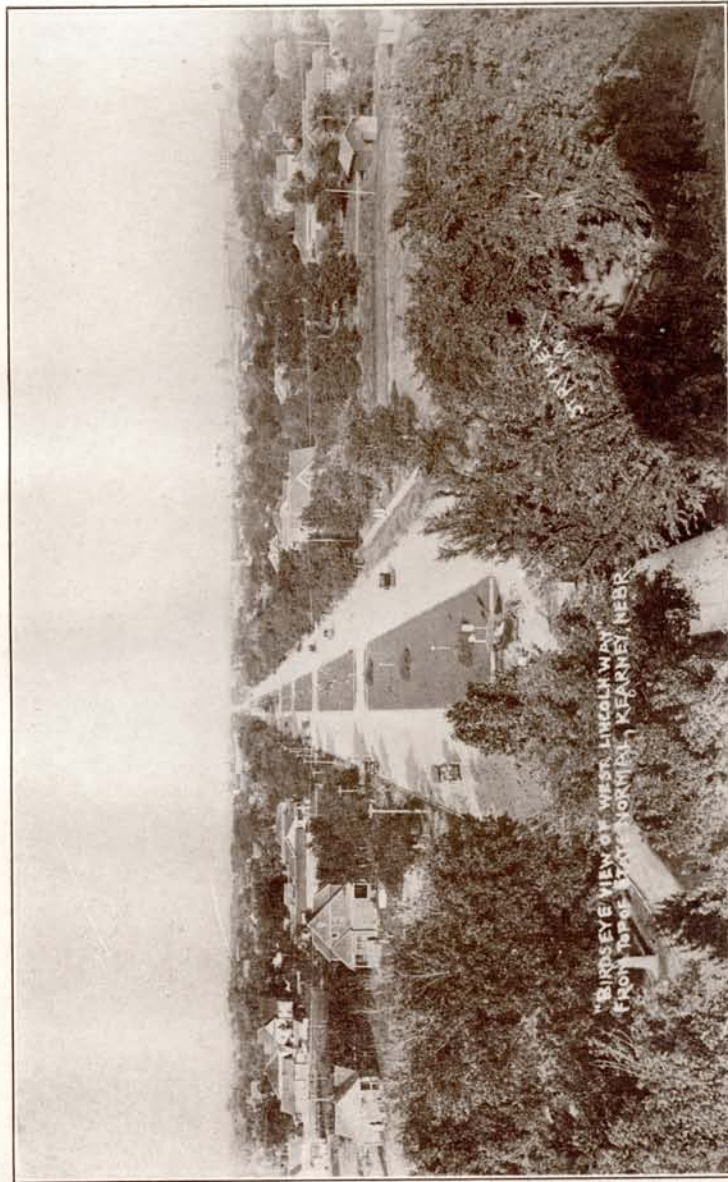
ON THE WAY TO THE NORMAL.





STATE NORMAL GYMNASIUM, KEARNEY, NEBR.

THE GYMNASIUM.

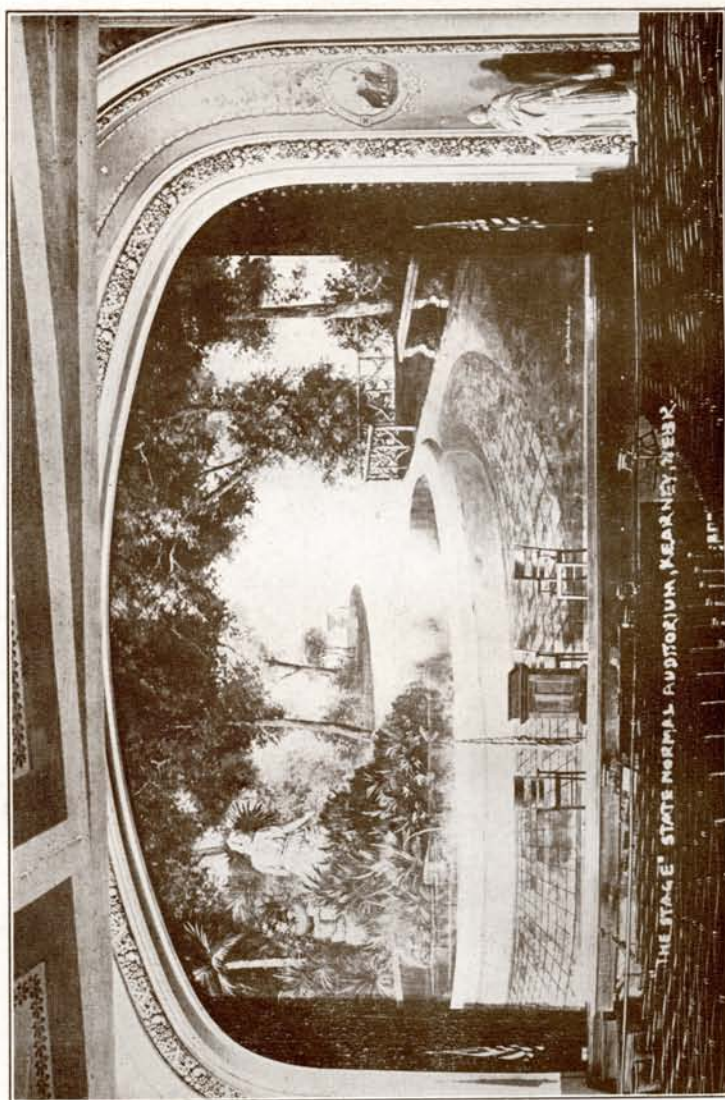


"BIRSEYE VIEW OF WEST LINCOLN WAY"  
FROM TOP OF MAIN BUILDING, NEBR.

A VIEW FROM THE TOP OF THE MAIN BUILDING.



BLUE AND GOLD



STAGE OF THE AUDITORIUM.

1921

BLUE AND GOLD

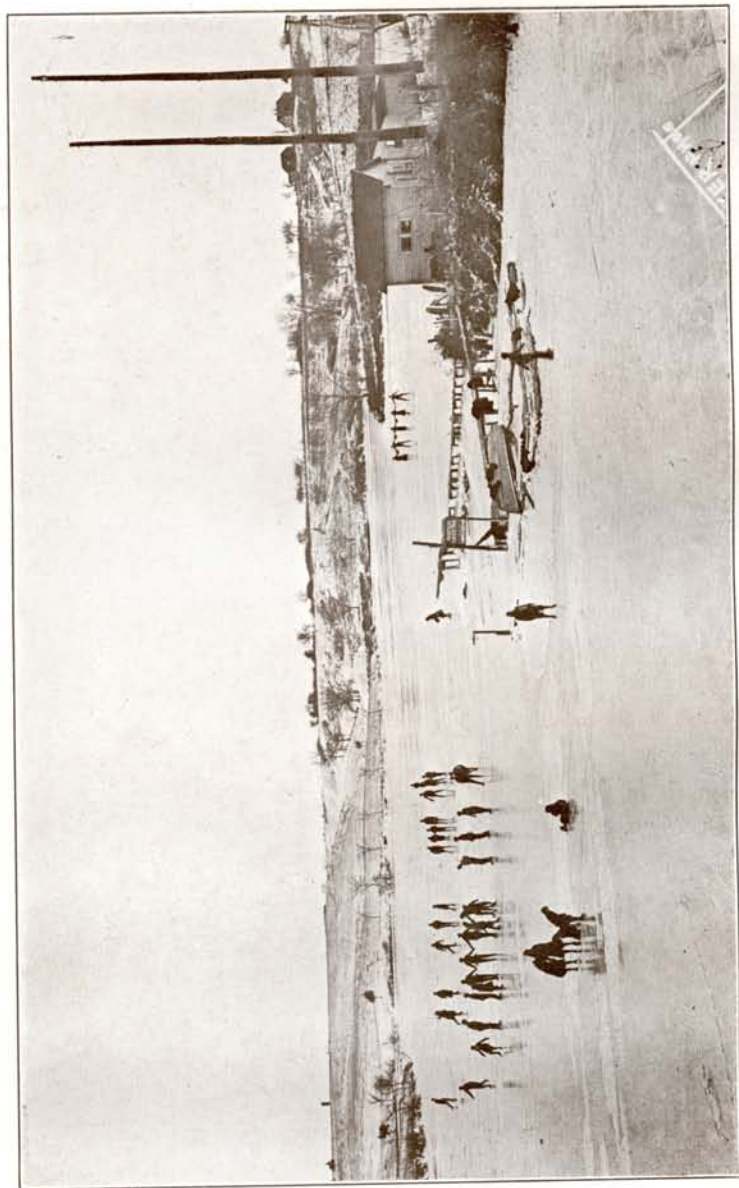


THE WINDING WALK.

1921



BLUE AND GOLD

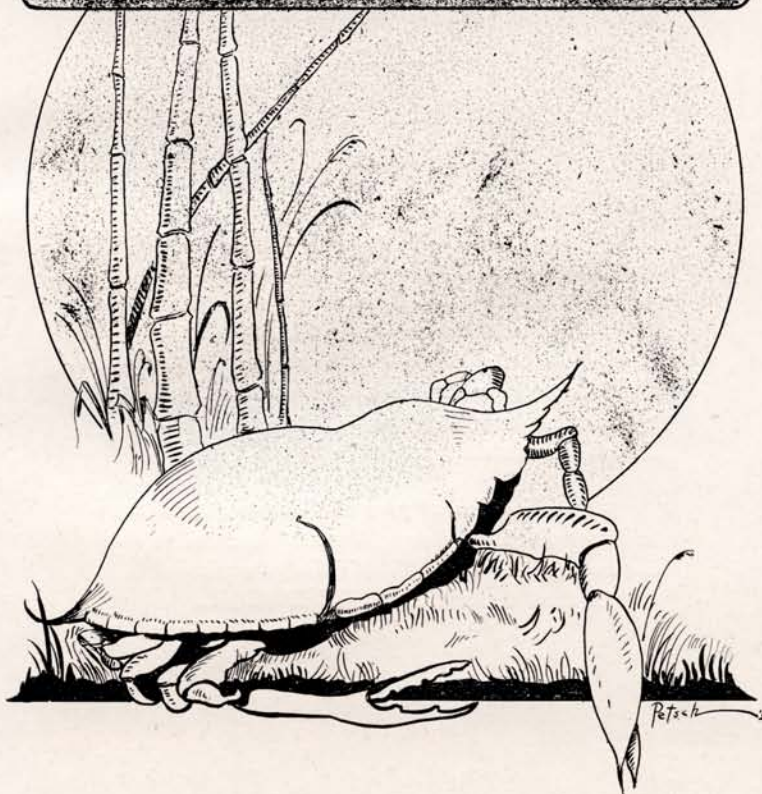


A LITTLE SKATING PARTY AT LAKE KEARNEY.

1921

BLUE AND GOLD

# FACULTY



1921

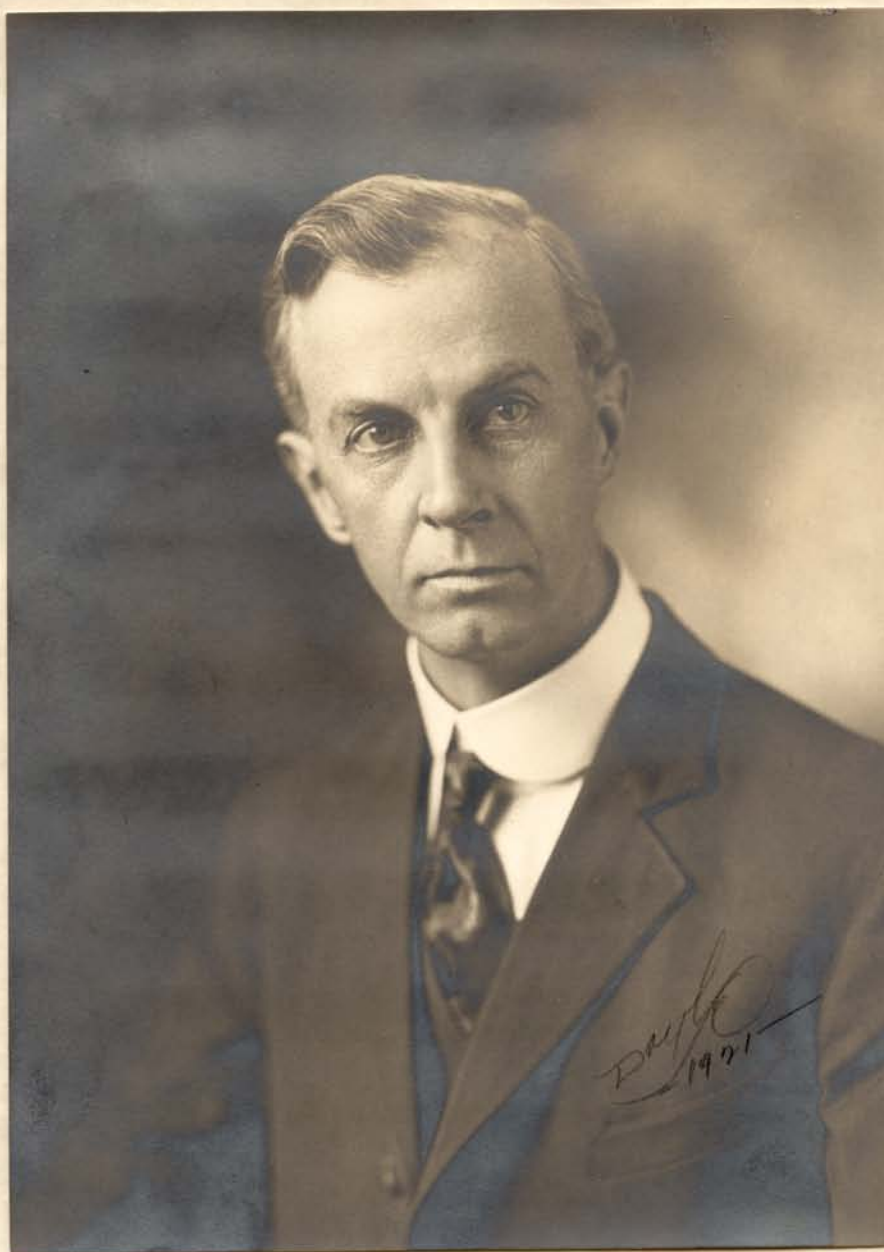


TO ALL FRIENDS OF  
**Nebraska State Normal School  
at Kearney**

*The following pages contain material that is certain to be of interest to you. The spirit emanating therefrom is primarily that of fond remembrance and kindly good will. It will be a disappointment, however, if you miss the spirit of the institution's determination to better existing conditions and to surpass previous records in enkindling high resolve and achieving more and on higher planes than has been possible in even the splendid past.*

*A continuation of your kind interest, intelligent criticism, and faith in our students to dare and to do is earnestly sought. With this the future is bright; without it all is dark. KEARNEY CAN.*

*—President Martin.*



PRESIDENT GEORGE E. MARTIN



# *Board of Education.*



THOMAS J. MAJORS, President  
Peru, Nebraska



H. E. REISCHE, Secretary  
Chadron, Nebr.

DAN MORRIS, Vice President .....	Kearney, Nebr.
J. M. MATZEN, State Superintendent.....	Lincoln, Nebr.
MISS ETTA YOUNG .....	Omaha, Nebr.
F. J. BERRY .....	Wayne, Nebr.
E. H. GERHART .....	Newman Grove, Nebr.

## *If We Only Understood*

*With Apologies to Rudyard Kipling.*

Could we but know the worthy thoughts,  
That lie in the faculty's minds,  
See the reasons for their testing,  
Know their motives and designs.  
Often we would judge them better,  
Than we ever think we could,  
We would find exams more easy  
If we only understood.

Could they judge our deeds by motive  
Know our worries and our woe  
Often they would love the Seniors,  
Even though they flunk us so.  
Could they know the hurried cramming,  
That precedes each awful test,  
They would feel our grades were better  
For they'd know we've done our best.

We don't know their cares and trials,  
Or their efforts all for us,  
And their weary nights of working,  
If we did we'd be more just.  
We don't understand their bigness,  
Their thoughts and planning for each one  
Or we'd try to help, not hinder,  
The great work that they have done.

Sometimes, of course, we judge them harshly,  
But at heart we know they're right,  
We appreciate their kindness  
As I'm sure they hoped we might.  
And in all the years to come,  
When we think back of each one,  
We will love the teachers better,  
For we'll then have understood.—B. A., F. B.



BLUE AND GOLD



EDITH M. SMITHEY  
Assistant Registrar

*Though complicated our credits  
may be,  
Miss Smithey will fix them, we  
all will agree.*

J. S. ELLIOTT  
Registrar

*This dignified gentleman has  
charge of the office and is al-  
ways ready to answer our foolish  
questions.*

BESSIE S. BLACK  
Secretary

*She guards the sanctuary of  
sanctuaries—President Martin's  
office.*

ANNA V. JENNINGS, B. L. S.  
Librarian

*Always ready to help us find  
a book although it may be be-  
fore our eyes.*

CATHERINE OAKES, B. L. S.  
Assistant Librarian

*She seems to have several  
pairs of eyes and ears. The Li-  
brary is a quiet spot.*

BLUE AND GOLD



LULA E. WIRT, A. B.

Dean of Women

*When we are sad and lonely,  
To Miss Wirt we do go  
With pleasant smile and greeting,  
She drives away our woe.*

MRS. SARAH BRINDLEY

Preceptress

*Dignity personified,  
She watches o'er the dorm  
And all its jolly maidens,  
To see that they reform.*

RAY M. OZMUN, A. B.

Physical Education

*In all athletics he guides the  
destiny of K. S. N.*

LILLIAN B. STUFF, A. B.

A. M., R. N.

School Nurse

*From head to toe our defects  
are found,  
Since the little school nurse has  
come to town.*



## BLUE AND GOLD



H. O. SUTTON, B. S.

Physical Science

*Chemistry students are all  
hard workers. There's a reason.*

J. I. ENGLEMAN, B. S.

Physical Science

*His students all like him; our  
tale is told.*

HARRIET SUTTON

*All hail to her! Every stu-  
dent's friend.*

A. J. MERCER, A. B., A. M.

Earth Science

*Earth, air, fire and water,  
Their mysteries are no more,  
For Mr. Mercer has explained  
Them to us o'er and o'er.*

CARRIE E. LUDDEN, B. ED.  
Biological Science

*On that great judgment morning,  
When we meet face to face,  
We'll know every single phylum,  
Its order and its place.*

BLUE AND GOLD



M. EVELYN DILLEY,  
A. B., A. M.

Latin

*Miss Dilley has the pep  
To which all K. S. N. keeps  
step.*

EMMA E. HANTHORN, A. B.  
Mathematics

*Algebraic equations have no  
terror for Miss Hanthorn's stu-  
dents.*

ALMA HOSIC, B. ED., A. M.  
Modern Languages

*She talks in many languages,  
French, Spanish and the rest,  
But of all the mystic languages,  
Camp Fire is the best.*

M. S. PATE, A. B., A. M.  
Mathematics

*Although a mathematics teacher  
He's the Senior class sponsor as  
well,  
And very worthy and mighty,  
As every Senior will tell.*



BLUE AND GOLD



MRS. H. J. HULL  
Piano

*Mrs. Hull is our music teacher and always a friend in need.*

ELEANORE H. KURTH, M. M.  
Voice

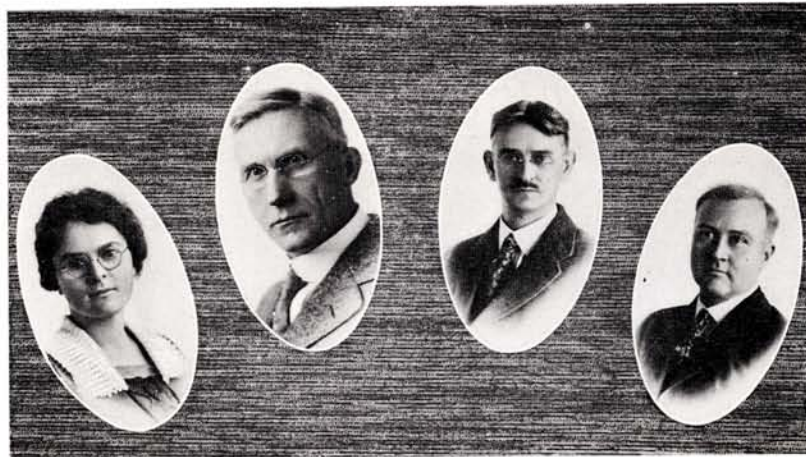
*She would tell you that teaching scales is hard, but her efforts have not been in vain.*

GRACE E. STEADMAN  
Public School Music  
*Of Choplin, Lizst and Wagner  
She teaches us the best,  
Of sharps and flats and naturals,  
And how to observe a rest.*

MARION C. SMITH  
Drawing and Art  
*Her students are better for  
her influence.*

DORIS SMITH, B. O.  
Dramatics  
*Her work speaks for itself.  
We all enjoy the plays at K.  
S. N.*

BLUE AND GOLD



JENNIE M. CONRAD, A. B.  
History and Civics  
*She is capable in everything  
she undertakes.*

C. N. ANDERSON, B. S.  
History, Civics and Economics  
*You make us work, Oh, yes!  
that's true,  
But history would be dull, if it  
weren't for you.*

R. M. SHREVES, A. M., PH. D.  
Education  
*Efficiency is his middle name,  
But we all like him just the  
same.*

J. H. STOUTEMYER, A. B.  
PH. D.  
Education  
*We wouldn't want to be  
graduated from Normal without  
having had a course under him.*



BLUE AND GOLD



L. E. BURTON, A. B., B. S.,  
B. I. E.

Industrial Training

*Whatever he does is done  
well and his whistling is no ex-  
ception. The birds have even  
been fooled.*

OTTO C. OLSEN, A. B.

Industrial Training

*Character is expressed in all  
of his work.*

MRS. C. H. WELLERS, B. S.

Home Economics

*Her heart is gold. We never  
hear the students call her else  
but dear.*

MRS. R. W. POWELL

Rural Education

*She is little but wise,  
And a very good friend,  
We know that on her  
We can always depend.*

R. W. POWELL, A. B.

Rural Education

*He is head of the Rural De-  
partment. Maybe that is the  
reason it's so well known.*

## BLUE AND GOLD



RALPH EGGLESTON  
Commercial Education

*He was never too busy to get  
copy for the "Blue and Gold"  
out on time.*

ELSIE M. STRYKER  
Penmanship

*She strikes me as being  
Of the best and dearest kind;  
A lovelier, finer lady  
You're not liable to find.*

J. H. HALE  
Commercial Education

*You've heard of him. He's a  
booster for K. S. N. athletics.*

B. H. PATTERSON  
Commercial Education

*A good musician is rare,  
But we know he's the best  
To be found anywhere.*



BLUE AND GOLD



MARY CRAWFORD, B. ED.,  
A. B., A. M.

English

*Short but mighty. We like  
her even though she makes us  
work.*

BLANCHE E. RIGGS, M. DI.,  
PH. B., A. M.

English

*Like a magnet she attracts  
and holds us all.*

A. L. PHILLIPS, A. B., A. M.  
English

*His hobby is "Perfect Eng-  
lish."*

MARJORIE PRATT, A. B.,  
PH. B.

Grades 3 and 4

*Miss Pratt's a critic teacher,  
Of teaching she's very fond,  
Black haired students imitate her,  
Although she is a blonde.*

MALVINA S. SCOTT, A. B.  
B. S.

Grades 1 and 2

*Another critic teacher,  
Very fine and helpful is she,  
The students often wonder,  
If they as good can be.*

## BLUE AND GOLD



MILDRED PATTON, A. B.

Grades 5 and 6

*Always ready to help and instruct her teachers.*

CORA O'CONNELL, A. B.,  
A. M.

Principal of High School

*A nicer instructor we've never had,*

*We'll agree she's mighty fine,  
Clever and pleasant, kind and true,*

*The best in every line.*

HANS OLSEN, A. B.

High School

*A trustier man one couldn't find,  
Consolidation fills his mind.*

G. A. YCAKAM, A. B., A. M.

Director

*All hail, our training school leader,*

*A very big man is he,  
Well worthy to be followed,  
In all of his work, we'll agree.*

AGNES KNUTZEN, A. B.

Kindergarten

*The Senior class knows her ability and worth. She's been an inspiration to us all.*



BLUE AND GOLD



1921

# KEEP OMING<sup>to</sup> KEARNEY

## FRESHMAN

I'm beginning my school at Kearney,  
And they say the folks here are so clever  
That once you begin  
To let knowledge "soak in,"  
You keep koming forever and ever.

## SOPHOMORE

I've been here a year, and it's fine,  
I've learned some and had a good time,  
Another year, see?  
A Junior I'll be,  
Then watch me "hep" up in the line.

## JUNIOR

Some come up from the "freshies,"  
Some are high school grads,  
But for real scholastic attainment  
We all seem to have gone quite mad.  
They call us the "Jolly Juniors,"  
And we do have good times, 'tis true,  
But we long for the day  
Not too far away  
When we'll be wise Seniors too.

## SENIORS

We have reached another milestone,  
And plucked much from the knowledge tree,  
But whether we go or whether we stay,  
It's "On for the A. B. Degree!"

## SENIOR COLLEGE

Why do we Keep Koming to Kearney,  
Is love for the old school so dear?  
Partly, yes, but where else do we find—  
Such PROFESSIONAL ATMOSPHERE?

—Old Settler.



BLUE AND GOLD



# SENIOR COLLEGE

1921



# Senior College.

## MOTTO.

*"A little learning is a dangerous thing."*

## GRADUATES.

Degrees of B. Ed. granted from 1905 to 1918.....	28
Degrees of B. Ed. changed to A. B. in Education.....	14
Degrees of A. B. in Education granted from 1918 to date.....	43

MISS LULA WIRT, CLASS SPONSOR.

## CLASS OFFICERS.

### First Quarter:

*President*  
*Vice President*  
*Secretary-Treasurer*  
*Sergeant-At-Arms*  
*Antelope Reporter*  
*Member of Dean's Council*

Elizabeth Squires  
Anna Luedtke  
Charlotte Shick  
Hans C. Olsen  
Lola King  
Mary Walsh

### Second Quarter:

Elizabeth Squires  
Rollie Bunny  
Mae C. Cruise  
Edna Cone  
Hattie Stegeman  
Flora Weisel

The Senior College class has an enviable record and a future that is most promising. It was first organized as a class in the fall of 1916, but its history dates back to the founding of our Alma Mater which from its beginning had the right to grant the degree of Bachelor of Education. In 1918 the State Board granted K. S. N. S. permission to confer the Degree of Bachelor of Arts in Education.

Since that year the growth of the Senior College class has been rapid and steady, as will be seen from a study of the statistics given above. And with its growth has come a wonderful broadening in the power and influence it wields over local student activities and educational affairs in general.

Space here forbids the recording of all the accomplishments of the Senior College class. Mention, however, must be made of the bulletin published in 1919 to set forth the advantages of an A. B. Degree from a Normal School such as our own. Nor must we fail to note the booster campaign conducted by the class in 1920 by the giving of programs in many towns and rural communities.

While one of the aspirations of our school is to develop individual thinkers, yet this is only possible in its fullest sense now that we have a strong Senior College class. It should also be noted that the profession of teaching is strengthened by the Senior College class, for adequately trained teachers cannot be developed in less than four years—the minimum time required for training in medicine and law. The Senior College class makes it possible to bring the best outside talent for periodic visits as was done last summer when a number of the nation's greatest educators taught and lectured in our school. This in turn strengthens our student body by attracting people of poise and large experience. In this way the Senior College class sets the pace and standards of our institution. It helps to raise teachers' salaries. It makes possible the training of persons for the advanced positions as supervisors and administrators. In short it helps to fill America's greatest need—the need of adequately trained teachers.



# BLUE AND GOLD

LULA WIRT  
Class Sponsor

Kearney

W. L. BENEDICT  
Y. M. C. A.  
*"Don't disturb me, I'm a busy man."*

Sutherland

MERLE BLOWERS  
Y. W. C. A.  
French  
*"One of those gentle ones who treats all with courtesy."*

Kearney

ROLLIE BUNNEY  
Y. W. C. A.  
Dramatic Club  
K Club  
Emanon  
Academy of Science and Mathematics  
*"I saw and loved."*

Orleans

EDNA CONE  
Y. W. C. A.  
French Club  
*"Tis true, composing is the noble part,  
But good translation is no easy art."*

Kearney

MARIAN CRAIG  
Teacher in City Schools  
*"True to her word, her work and her friends."*

Kearney



# BLUE AND GOLD



AGNES CRISP                      Kearney  
Academy of Science and  
Mathematics  
*"All I ask is but a patient ear."*



MAE CRUISE                      Kearney  
Y. W. C. A.  
Rural Club  
*"Friendly council cuts off many  
foes."*



LETA ITZEN                      Glenville  
Teaching in Hastings  
*"Love all, trust few, do wrong to  
none."*



ALTA KIBLER                      Kearney  
Y. W. C. A.  
Dramatic Club  
*"A light heart lives long."*



LOLA KING                      Amherst  
Teaching in Gothenburg  
*"Genius must be born and never  
can be taught."*



ANNA LUEDTKE                      Scottsbluff  
Teaching in Scottsbluff  
*"The brightest eyes, and the cheer-  
iest smile, the happiest girl is the most  
worth while."*



# BLUE AND GOLD

ALFRED NEILSEN Dannebrog  
Teaching in Nysted

*"Born for success he seemed. With  
grace to win, with heart to hold."*

CHARLOTTE SHICK Kenesaw

Aspasian  
Y. W. C. A.  
Academy of Science and  
Mathematics

*"Knowledge is power."*

ELIZABETH SQUIRES Kearney

Y. W. C. A.  
Latin Club  
Glee Club  
Academy of Science and  
Mathematics

*"A project tinglingly alive."*

HATTIE STEGEMAN Palisade

Aspasians  
Y. W. C. A.  
French Club

*"A truly worth while girl."*

ESTELLE TEN BRINK Gandy

Teaching in Arnold

*"The tallest girl in school, and with  
ideals just as lofty."*

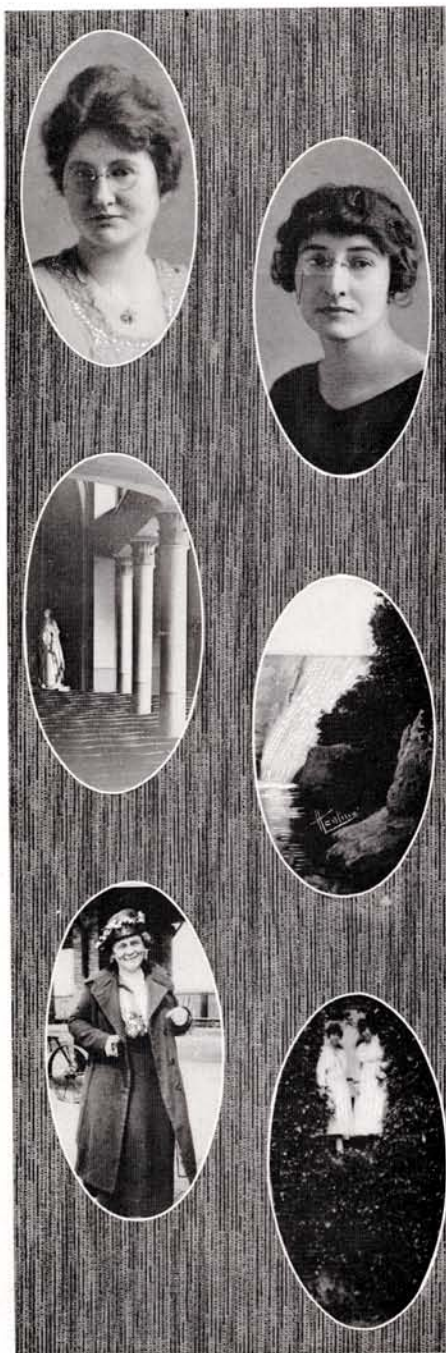
FLORA WEISEL Alexandria

Y. W. C. A.  
Deans Council  
Aspasians

*"Oh this learning, what a thing it  
is."*



# BLUE AND GOLD



MARY WALSH                      Grand Island  
Y. W. C. A.  
Aspasians  
Primary-Kindergarten Club.  
Rural Club

*"Happy am I, from care I'm free,  
Why aren't they all contented like  
me.?"*

MRS. G. A. YOAKAM              Kearney  
*"She is one of those people whom  
no one knows anything mean about."*  
Received degrees in 1920.

## Received Degrees in 1920

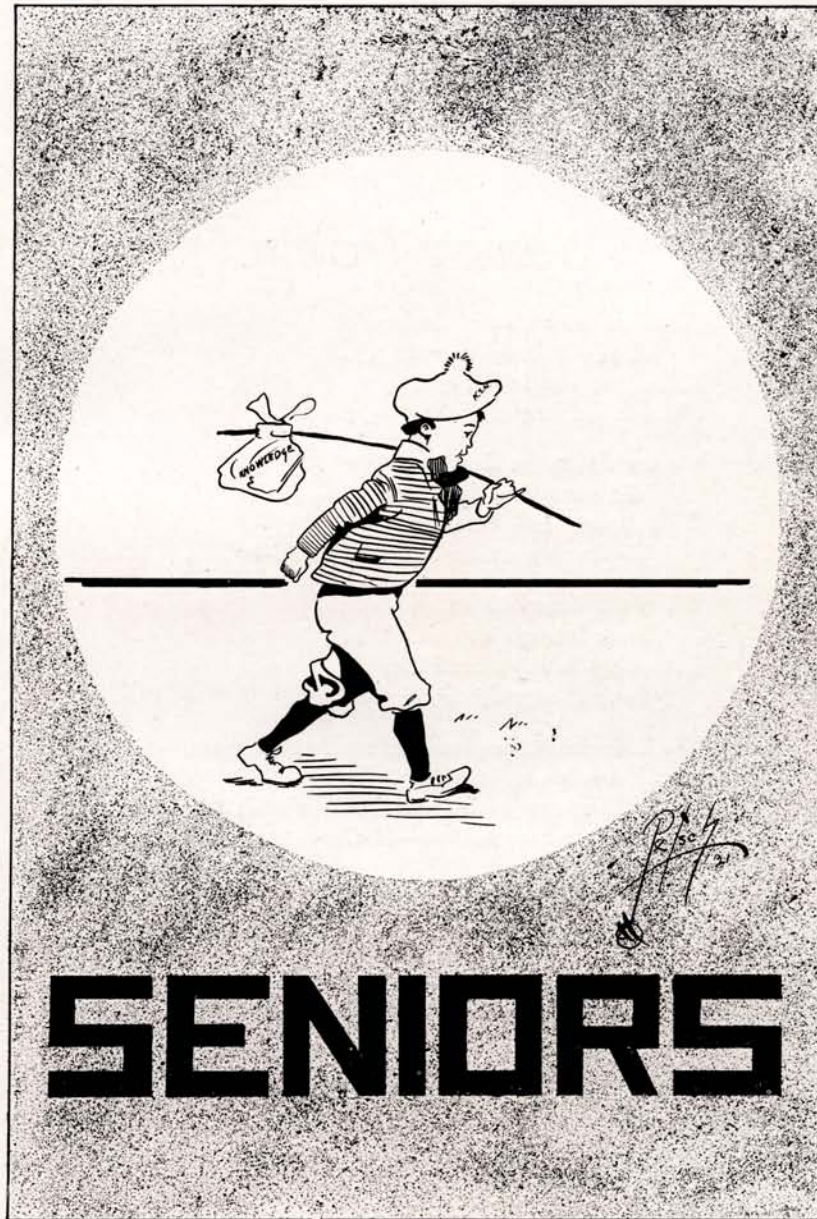
ANNA LUEDTKE, A. B.  
Junior H. S. Scottsbluff

HANS OLSEN, A. B.  
Member of faculty Nebraska  
State Normal School, Kearney.

ALFRED NEILSEN, A. B.  
Teaching in Folk High School  
at Nysted, Nebr.



BLUE AND GOLD



**SENIORS**

1921

## *Senior Poem.*

Folks, we are a class of Seniors,  
A mighty lively class we say,  
Full of pep and full of ginger;  
Always laughing, always gay.

We come from the East,  
We come from the West,  
From Dakota and Tennessee,  
To the very middle of the U. S. A.—1733.

We've tall classmates and short ones,  
Some fat ones and some thin,  
But variety is the spice of life,  
In that we surely should win.

We have almost completed our work at this place,  
Instructors we soon are to be.  
So we'll brush up our coats and fake a straight face  
And send applications—O Gee!

And when on a day that is not far away  
We march down the long slippery aisle,  
We'll receive our diploma with outstretched arms  
And thank K. S. N. all the while.

—Frances H. Watson.



# BLUE AND GOLD

EVELYN ALLEN Elm creek  
Dramatic Club  
Orchestra  
*"Her heart's worth gold."*

BERNICE ASHBURN Gibbon  
Y. W. C. A.  
Aspasians  
*"To those who know thee not, no words can paint,  
And those who know thee, know all words are faint."*

LUCILE BARBER Mitchell  
Y. W. C. A.  
Rural Club  
*"Above our life we love a steadfast friend."*

FLORENCE BRUCE Kearney  
French Club  
Camp Fire  
*"I should have to think long if I were asked to name one who has done more valuable service."*

GLADYS CARVER Cambridge  
Deans Council  
Y. W. C. A.  
Rural Club  
Music Supervisor  
Kindergarten-Primary Club  
*"Not afraid to tackle big things."*

HERTHA CHRISTOFFERSON Omaha  
Y. W. C. A.  
Rural Club  
Aspasians  
*"Work is my recreation."*



# BLUE AND GOLD



JUANITA CONN                      Kearney  
*"To beguile many and be beguiled  
 by none."*

SABINA COSTELLOE              Alexandria  
 Aspasians  
 Dramatic Club  
 Catholic Club  
 Kindergarten-Primary Club  
*"Beaming with good humor."*

VERNE CROSIER                      Kearney  
 Y. M. C. A.  
 Emanons  
 K Club  
*"You will go a long way before  
 you find a better man."*

HELEN CURRY                      Columbus  
 Dramatic Club  
 Catholic Club  
 Kindergarten-Primary Club  
*"When she will, she will, and you  
 may depend on it,  
 When she won't, she won't, and that's  
 the end of it."*

KATHLEEN CURRY                  Columbus  
 Catholic Club  
 Dramatic Club  
*"Handsome is as handsome does."*

HELEN CURTIS                      Basin, Wyo.  
 Y. W. C. A.  
 Rural Club  
 Camp Fire  
*"Honest labor bears a lovely face."*



# BLUE AND GOLD

ETHEL DADDOW                      Kearney  
     Latin Club  
     Kindergarten-Primary Club  
*"She's sweet, she's fair, she's quite  
 all there."*

MARY ELLEN DANIELS              Kearney  
     Camp Fire  
     Y. W. C. A.  
*"Never says much but always  
 knows whereof she speaks."*

MARY DAVIS                      Gibbon  
     Latin Club  
     Y. W. C. A.  
     Deans Council  
*"Which not even critic's criticise."*

AMY DUNAWAY                      Overton  
     Glee Club  
     Dramatic Club  
*"As a meteor bright,  
 As a comet bright,  
 Was her smile of pearl and spray."*

ESTHER ENOCKSON                  Schuyler  
     French Club  
     Latin Club  
     Y. W. C. A.  
*"One of the few, the immortal  
 names, that were not born to die."*

ROXANA ERB                      Gothenburg  
     Y. W. C. A.  
     Dramatic Club  
     Camp Fire  
     Kindergarten-Primary Club  
*"Her eyes beam as kindly and bright,  
 As the sun in the azure tinged sky."*



# BLUE AND GOLD



CLARENCE EVANS                      Antioch  
Y. M. C. A.  
Academy of Science and  
Mathematics  
Emanon Literary  
*"Education makes the man."*

MABEL A. EVANS                      Kearney  
Y. W. C. A.  
Dramatic Club  
Academy of Science and  
Mathematics  
*"A character worth knowing."*

LUCILE FORSYTHE                      Kearney  
Dramatic Club  
*"One who trifles with all  
Is less likely to fall  
Than she who trifles with one."*

DORIS FOSTER                      Berwyn  
Y. W. C. A.  
Kindergarten-Primary Club  
Camp Fire  
Rural Club  
*"Her heart is surely in her work  
She's never known to lag or shirk."*

DELIA GARRETT                      Minden  
Y. W. C. A.  
Aspasian Literary  
Camp Fire  
*"Charms strike the sight but merit  
wins the soul."*

ETHEL GARRISON                      Kearney  
Dramatic Club  
Kindergarten-Primary Club  
*"But so fair,  
She takes the breath of men away  
Who gaze upon her unaware."*



# BLUE AND GOLD

CHARLES GLASNER      Clarkston  
Y. M. C. A.  
Basket Ball  
*"Grave as the manner of noble  
men is."*

CLARA GLEASON      Monroe  
Aspasians  
Catholic Club  
*"Her modesty is worthy of wide  
imitation."*

MARY MAE HOLMES      Elmcreek  
Aspasians  
Y. W. C. A.  
French Club  
*"Your worth is very dear in my  
regard."*

HAZEL HOLTZ      Ericson  
Academy of Science and  
Mathematics  
Y. W. C. A.  
*"She has an indefinable charm  
about her."*

ALICE M. JOHNSON      Axtell  
Y. W. C. A.  
French Club  
*"Pains of love be sweeter far,  
Than all other pleasures are."*

GRACE JONES      Cozad  
Dramatic Club  
Aspasians  
*"Warmly pure and sweetly strong."*



# BLUE AND GOLD



MARGARET KELLY      Kearney  
Y. W. C. A.  
Aspasian Literary  
*"A soul to human race a friend."*

MARY LANTZ      Kearney  
Y. W. C. A.  
Kindergarten-Primary Club  
Dramatic Club  
Glee Club  
*"She from whose lips divine persuasion flows,  
Gentle of speech, beneficent of mind."*

EDITH MCBRIDE      Kearney  
Y. W. C. A.  
Deans Council  
Aspasians Literary  
*"True as the needle to the pole or  
as the dial to the sun."*

PAULINE McVEY      Torrington, Wyo.  
Y. W. C. A.  
Deans Council  
Kindergarten-Primary Club  
*"You'll admit it's a pity  
That every committee  
Can't have such a one at its head."*

KATHRYN MARTIN      Kearney  
Y. W. C. A.  
Dramatic Club  
Academy of Science and  
Mathematics  
*"She's all my fancy painted her,  
She's lovely, she's divine."*

EDITH MEYER      Lodgepole  
Y. W. C. A.  
Aspasian Literary  
*"Sympathies as wide as the world."*



# BLUE AND GOLD

KENNETH NEWCOMB      Kearney  
Y. M. C. A.  
K Club

*"He has a phenomenal capacity for  
pegging away."*

CECELIA O'MALLEY      Alda  
Kindergarten-Primary Club  
Catholic Club  
Aspasians

*"She is a girl of moods and mo-  
ment."*

HAZEL PARKS      Shelton  
*"Eyes like the dawn of day."*

CORDIE PETERSON      Hebron  
Y. W. C. A.  
Academy of Science and  
Mathematics  
Rural Club  
Latin Club

*"Humility, that low, sweet root  
From which all heavenly virtues  
shoot."*

LOUISE PETERSEN      Omaha  
*"She's the rock the oak not to be  
wind shaken."*

ARTHUR PETSCH      Milford  
Dramatic Club  
Y. M. C. A.  
Rural Club  
K Club

*"Our class president who will march  
down to posterity with divine honors."*



# BLUE AND GOLD



MARY QUINN Burwell  
Catholic Club  
Academy of Science and  
Mathematics  
*"A countrywoman of yours that hath  
done worthy service."*



CLETA RANDALL Juanita  
Y. W. C. A.  
Latin Club  
Camp Fire  
*"I am wealthy in my friends."*



DORIS RANDEL McCook  
Glee Club  
*"Study is like the heaven's sunset."*



VELMA RANDOLPH York  
Y. W. C. A.  
Kindergarten-Primary Club  
*"A sight of you is good for sore  
eyes."*



VERA ROLAND Crete  
Y. W. C. A.  
Camp Fire  
Aspasians  
Glee Club  
*"Whatever is worth doing at all is  
worth doing well."*



LAURA RUNDLE Kearney  
Y. W. C. A.  
Dramatic Club  
Academy of Science and  
Mathematics  
*"Witty, courteous, liberal, full of  
spirit."*



# BLUE AND GOLD

VINNIE SHAWKEY Franklin  
Kindergarten-Primary Club  
Y. W. C. A.

*"He has caused me a thousand apprehensions."*

ERMA SHIRLEY Alma  
Y. W. C. A.

*"Soft peace she brings wherever she arrives."*

JOHN D. SIGLER Schuyler  
Y. M. C. A.  
Rural Club

*"Worthy of all praise."*

PEARL SILEN Kearney  
Kindergarten-Primary Club  
Y. W. C. A.

*"My man's as true as steel."*

ESTHER SMITH Kearney  
French Club

*"Like the stars that nightly shine,  
Thy sweet eyes shed light divine."*

FLORENCE SQUIRES Hastings  
Y. W. C. A.

*"Whom to have known was a pleasure."*



# BLUE AND GOLD



CLARA STEVENS                      Kearney  
Dramatic Club  
Aspasians  
Glee Club

*"She's peppy, stirring, all afire,  
She cannot rest and cannot tire."*



EDITH THYGESEN                      Kearney  
Glee Club

*"K. S. N. will miss you when you  
leave."*



ALMA TURLEY                      Kearney  
Y. W. C. A.  
Rural Club

*"She is anointed above her fellows  
with the oil of good feeling."*



FRANCES WATSON                      Gothenburg  
Y. W. C. A.  
Camp Fire  
Music Supervisor's Club  
Glee Club

*"A dainty little miss."*



ILA WEEKS                      Grand Island  
Y. M. C. A.  
Rural Club  
Emanon Literary  
Dramatic Club  
K Club

*"Yes, social friend, I love thee  
well."*



MABELLE WILKIE                      Gibbon  
Y. W. C. A.  
Aspasian Literary  
Kindergarten-Primary Club  
Rural Club  
Music Supervisor's Club  
Glee Club

*"A girl worth while is a girl who  
will smile when everything goes dead  
wrong."*



# BLUE AND GOLD

CLYDE WILLIAMS  
Y. M. C. A.  
Emanons  
Latin Club  
Rural Club  
Dramatic Club

Gibbon

*"When he tackles a job he tackles  
it vigorously."*

THE EDITOR.

ONE OF OUR TENNIS PLAYERS.

PEP.

AS USUAL.

THE SPILLWAY.





## Senior Class Prophecy.

The other night I went to the picture show and trying to focus my attention until the show began, my eye fell upon a round crystal shaped object from which a peculiar radiance shone upon the eye. This star gazing crystal proved to be a bald head.

What did I see in that crystal while under the magic spell? I saw myself standing beside an airplane built to resemble a human tongue. Gladys Carver, president of the National Athletic Association was very graciously presenting this prize to me for winning the new feature introduced in the international marathon races. I had won by manipulating the English language with my tongue ten times faster than any one of the numerous contestants. I thought to myself, "What year is this?" On the airplane I read 1962.

Upon receiving the plane I instantly desired to visit all the other seniors of '21 that I possibly could during the vacation of one page. Into my vehicle I sprang and at once I was at the Kearney State Normal getting data from the placing bureau's follow up reports.

Petsch, our worthy president, was in Honolulu. He proved to be a man of many reforms, his latest being an attempt to censor evils there by his cartoons on the Hula Hula.

From Honolulu I hastened to Phoenix, Arizona, where to my pleasure I found Florence Bruce, our annual editor, busily at work looking up the geneology of the senior class of '21 alphabetically.

She had proved that Delia Garrett had revived the art that had made her great, great, great aunt famous, that of dressmaking, only Delia's fame depended upon the artistic taste of making paper dresses for Philadelphia society.

My next stop was Kanorada, Kansas, where I found Clyde Williams, a married man but famous, for he had invented an instrument that was the salvation of married men. It was similar to a thermometer as it registered the heat waves caused from his wife's temper and prophesied what kind of a storm was brewing. As a regular tornado was in progress on my arrival and wishing to keep my neutrality, I left for Pittsburg, Pa., the smoky city.

Then my bird took me across the continent to Lick Conservatory in California. I arrived just in time to see Edith McBride, who had amassed a fortune by her speeches and lost her voice, ready to take a trip to Mars by being shot from a big gun prepared for that purpose.

I was so stunned that I soared away without any particular place in view. Suddenly I felt a jar and beheld myself upon a mountain top and situated near me was a three room cottage. Out of curiosity I knocked on the door and was confronted by Glasner, Evans and Weeks who had been lost track of by the placing bureau.

They were writing a book on the joys of bachelordom and believed in practicing what they preached. They seemed afraid of me so I bade them adieu and started for Alaska, according to the route they prescribed.

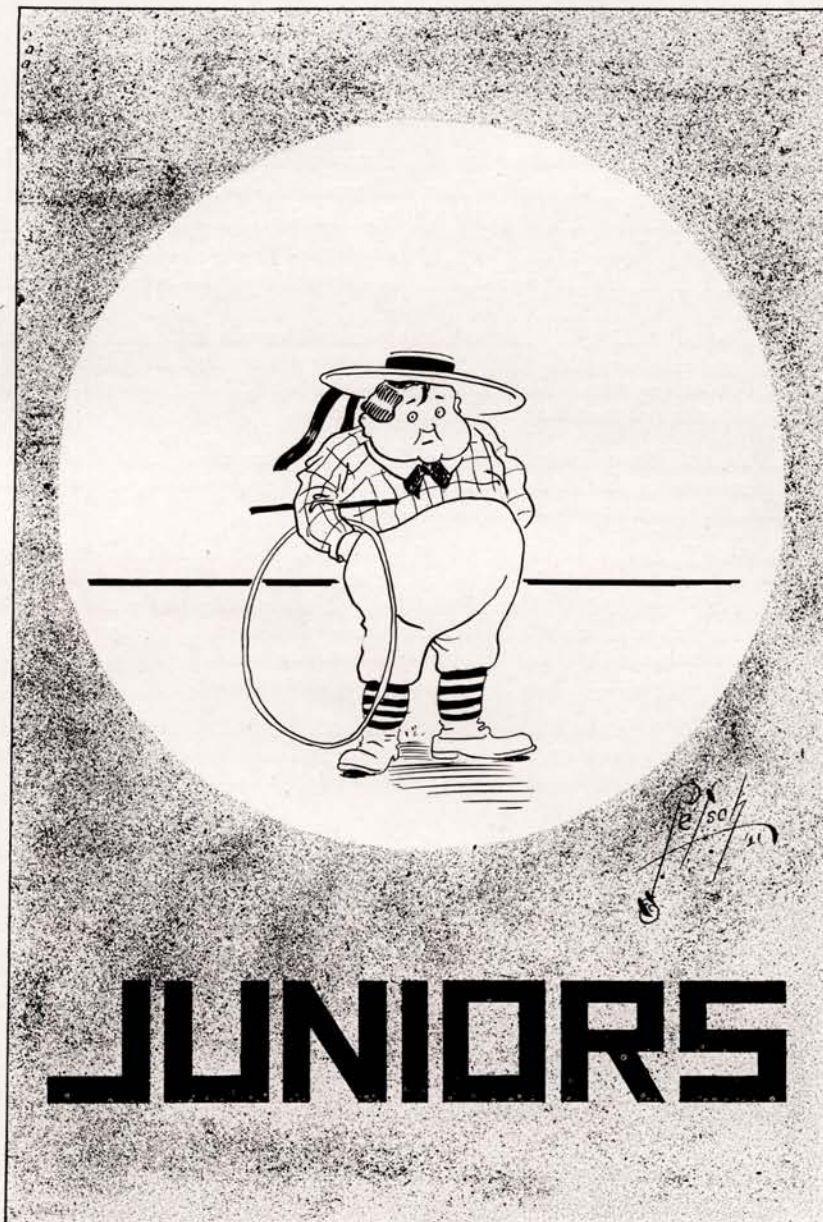
My airplane landed in Nome, causing some consternation among the inhabitants. Whom should I see coming to meet me but Vern Crozier who told me that he was the President of this Agricultural school for the Esquimaux men and women in the Northland, and also that he had the two Petersons and a score of other senior girls on his teaching staff.

While here I discovered that my time was short and took leave in a hurry. Nearing home a government airplane passed me going the other way and I beheld Mary Lantz in the pilot's seat. In endeavoring to attract her notice I lost control of my airplane and then—

The lights went on in the picture show.



BLUE AND GOLD



**JUNIORS**

1921

## Junior History.

Colors—Green and Gold.

### OFFICERS.

President .....	Chester Lynch	Treasurer .....	Ruby Morris
Vice President .....	Marion Walker	Sergeant-At-Arms .....	Lee Alcorn
Secretary .....	Merna Main	Yell Leader .....	Ruby Cales
Member of Dean's Council,		Antelope Reporter .....	Gertrude Toll
.....	Genevieve Clark	Antelope Board of Control...	John Sigler

The class of 1922 which now consists of more than one hundred and thirty jolly juniors was organized September 20, 1918. Miss Hanthorne and Mr. Engleman acted as sponsors and have proved to be unusually good leaders. During the war the girls of the class spent much of their time helping the Red Cross.

The members have always had a good time together during their freshman and sophomore years as well as during their junior year. They have always been willing to donate their services whenever they were needed.

We started this year out right by having a weenie roast and bacon bat. We also took an active part in the All School Party. Later we had a Hard-Time Party which proved to be a huge success. One of the stunts of the evening was a mock wedding. "Miss Roxana Erb and Mr. Claud Weimer were united in marriage by Rev. Chester Lynch." The couple entered to the strains of a wedding march by Miss Mabel Miller. Miss Helen Christenson and Mr. John Sigler acted as attendants.

We decided to lead all the other classes and they will have to admit that we have done so. We have taught the seniors how to yell and have showed them that we could sing the junior song better than they could sing the senior song. We know that they like ours better anyway.

One interesting feature given by the junior class was the stunt which was put on in convocation. This was a mock senior class meeting in which various juniors ably impersonated the different seniors. Henry Crozier acted as president Petsch; Florence Miller as Laura Rundle (secretary); Claud Weimer as Clyde Williams; Eunice Brothers as Katharine Martin; Genevieve Clark as Bernice Ashburn; Katherine Black as Vinnie Shawkey; Richard Berga as Illa Weeks; Mabel Miller as Florence Bruce and Mr. Engleman played the part of senior class sponsor (Mr. Pate). It was stated that as the seniors had no talent it would be necessary to call on the juniors to give a program at this meeting. The program was as follows:

Vocal Selections.....	Misses Christenson, M. Miller and Walker
Reading .....	Ruby Morris
Xylophone Solo .....	Mr. Church

The juniors also showed the seniors how they yell "SENIORS."

We are proud of the work our class has done and are sure that the class of 1922 will always be remembered as one of the "best" classes in the Kearney Normal School.



# BLUE AND GOLD

J. I. ENGLEMAN  
Class Sponsor

EMMA E. HANTHORN  
Class Sponsor

CHARLOTTE ABRAHAMSON Kearney  
Glee Club  
Dramatic Club

*"She's pretty to walk with, and  
witty to talk with, and pleasant too,  
to think on."*

LEE ALCORN Kearney  
Y. M. C. A.  
*"None but the brave deserve the  
fair."*

EATHER APPLGATE Gibbon  
Y. M. C. A.  
Basket Ball  
*"No intelligent man can afford to  
disregard the women."*

RITA ATKINS Kearney  
*"Winsome, fair and with never a  
care."*



# BLUE AND GOLD



ESTHER J. BARNEY      Friend  
Y. W. C. A.  
Camp Fire  
*"A friend loveth at all times."*

LORENA BELIAN      Kimball  
*"I have no secret of success but  
hard work."*

LENA BERG      Kearney  
Y. W. C. A.  
*"A fine example of unselfishness."*

ETHYLN BERGER      Omaha  
Y. W. C. A.  
Kindergarten-Primary Club.  
Dramatic Club  
*"There is something very likable  
about her."*

KATHRYN BLACK      Kearney  
Y. W. C. A.  
Glee Club  
Kindergarten-Primary Club.  
*"Well mannered, quiet and wise."*

MARGARET BLACK      Kearney  
Glee Club  
Orchestra  
Y. W. C. A.  
*"Her very foot has music in it, as  
she comes up the stair."*



# BLUE AND GOLD

RUBY BLISS Elm creek  
Glee Club

*"Your fair discourse hath been as-  
suaged making the hard way sweet and  
delectable."*

ELIZABETH BOEHLER Culbertson  
Y. W. C. A.  
Camp Fire  
French Club

*"And all may do what has by man  
been done."*

SUSAN BRADSTREET Spencer  
Aspasians  
Y. W. C. A.

*"I did never think that lady would  
have loved any man."*

RICHARD BREGA Kearney  
*"Fortune aids the bold."*

MARY BRIGHAM Kearney  
*"A friend in need is a friend in-  
deed."*

EUNICE BROTHERS Stapleton  
Y. W. C. A.  
Aspasians

*"I have heard of the lady and  
good words went with her name."*



BLUE AND GOLD



NELL BUTLER Kearney  
*"She had withal a merry wit,  
 And was not shy of using it."*



HELEN BURKE Beatrice  
*"I profess not talkings only this,  
 Let each man do his best."*



RUBY CALES Naponee  
 Academy of Science and  
 Mathematics  
*"There is something very captiva-  
 ting in her manner."*



GERALD CALHOUN Kearney  
*"If Edison weren't, I would be."*



ISABELLE CAMERON Kearney  
 Glee Club  
 Music Supervisors  
 Catholic Club  
*"Winsome in appearance."*



JOHN CAMERON Kearney  
*"Describe him, who can,  
 A collection of all that was pleasant  
 in man."*



# BLUE AND GOLD

FERN CAMPBELL Werssert  
*"A trustworthy friend."*

ALMA CLARK York  
 Dramatic Club  
 Aspasiens  
 French Club  
 Deans Council  
*"Slow to speak ill of anyone."*

GENEVIEVE CLARK Gibbon  
 Y. W. C. A.  
 Deans Council  
*"In youth and beauty wisdom is  
 but rare."*

RACHEL CLARK York  
 Catholic Club  
 Aspasiens  
*"Of a kind and forgiving disposition."*

VIRGINIA CLARK Scotia  
 Y. W. C. A.  
*"She was a form of life and light  
 That seen became a part of sight."*

JAMES CLEARY Kearney  
 Band  
 Orchestra  
*"Good things should be praised."*



# BLUE AND GOLD



HELEN CRENSHAW      Marengo, Ia.  
Y. W. C. A.  
Music Supervisors  
*"A friend who loveth at all times."*

PHILLIP CUMMINGS      Kearney  
Y. M. C. A.  
Dramatic Club  
*"On a furious march with sealed orders."*

HENRY CROZIER      Guide Rock  
Y. M. C. A.  
*"My only books were woman's looks—  
And folly's all they've taught me."*

CLARISSA DEAN      Hordville  
*"I'll say she looks as clear  
As morning roses newly washed with dew."*

DONALD DENNIS      Riverdale  
Y. M. C. A.  
*"The noblest mind the best contentment has."*

EVELYN DRAKE      Kearney  
Dramatic Club  
*"Girls were created to love and to be loved."*



# BLUE AND GOLD

VIVA EDWARDS      Vovell, Wyo.  
*"Sing away sorrow; cast away  
 care."*

LEONA EVERSON      Holdrege  
 Rural Club  
*"Sober, steadfast and demure."*

ALTA GARNER      Axtell  
 Y. W. C. A.  
 Rural Club  
*"Is she not passing fair."*

OTIS GHARRING      Nelson  
 Emanon  
*"I will most willingly attend your  
 ladyship."*

EMMA GLEBE      Fairbury  
 Aspasians  
 Rural Club  
*"The land that hath made you  
 fair hath made you good."*

MABEL GRAY      Nelson  
 Kindergarten-Primary Club.  
*"A kinder lady treads not the  
 earth."*



BLUE AND GOLD



HESTER GREEN                      Kearney  
Y. W. C. A.  
Academy of Science and  
Mathematics  
*"Whatever she did was done with so  
much ease  
In her alone it was natural to please."*



EDWARD HANSEN                      Kearney  
Y. M. C. A.  
Emanon  
*"The stuff of a hero is in him."*



EVA HEPP                              Scotia  
Y. W. C. A.  
*"Open, above-board, and explicit."*



HERBERT HILL                      Riverdale  
Y. M. C. A.  
*"Love the trade which thou hast  
learned and be content therewith."*



AMY HOBBS                      Torrington, Wyo.  
Y. W. C. A.  
Camp Fire  
*"Nothing is more friendly to a man  
than a friend in need."*



MAURINE HOLTZ                      Ericson  
Latin Club  
Y. W. C. A.  
*"All people said she had author-  
ity."*



# BLUE AND GOLD

VAE HOOVER                      Ansley  
*"Officious, innocent, sincere. Of every  
 friendless name the friend."*

DOROTHY HOPPER                      Waterloo  
 Y. W. C. A.  
 Rural Club  
 Camp Fire  
*"Those who want fewest things are  
 nearest to the gods."*

ANITA HOUSEHOLDER                      Newark  
 Y. W. C. A.  
*"It's the quiet people who do the  
 work."*

HULDA JENSEN                      Cushing  
 Y. W. C. A.  
 Camp Fire  
 Rural Club  
*"I remember her well, and I re-  
 member her worthy of thy praise."*

ESTHER JOHNSON                      Kearney  
*"A rosebud set with willful thorns."*

STELLA JOHNSON                      Axtell  
 Y. W. C. A.  
 Camp Fire  
 Academy of Science and  
 Mathematics  
*"My tongue within my lips I reign,  
 For who talks much must talk in  
 vain."*



# BLUE AND GOLD



HOMER KUMMER                      Kearney  
*"Mighty in word and deed, basket-  
 ball for instance."*

GLADYS LENEY                      Holdrege  
 Rural Club  
*"She speaks, behaves, and acts just  
 as she ought."*

LOLA LENTZ                      Columbus  
 Y. W. C. A.  
*"Fashioned so slenderly young and  
 so fair."*

MRS. DAVID LEWIS                      Kearney  
 Glee Club  
*"You can leave it to her for being  
 clever."*

CHESTER LYNCH                      Oconto  
 Rural Club  
 Emanon  
 Catholic Club  
 Academy of Science and  
 Mathematics  
*"Gifted with the power of words."*

MABEL MCKEAN                      Kearney  
 Kindergarten-Primary Club.  
*"I love tranquil solitude,  
 And such society,  
 As is quiet, wise and good."*



## BLUE AND GOLD

MERNA MAIN Belgrade  
Y. W. C. A.  
Rural Club  
*"Taking a living, loving interest in men."*

CHARLOTTE MARTIN Kearney  
*"The very best friend you need."*

IRENE MATSON Axtell  
Rural Club  
Y. W. C. A.  
*"Full of kindly deeds."*

FRANCES MELINE Kearney  
Glee Club  
Dramatic Club  
*"Your presence makes us rich."*

VIVIAN MEREDITH Kearney  
Kindergarten-Primary Club.  
Y. W. C. A.  
*"If neabody cares for me,  
I'll care for naebody."*

FLORENCE MILLER Nebraska City  
Y. W. C. A.  
Dramatic Club  
*"Eyes like heaven's bright lamps,  
In matchless beauty shining."*



# BLUE AND GOLD



M. EVANGELINE MILLER    Kearney  
Catholic Club  
*"A lovely lady, garmented in light,  
from her own beauty."*



MABEL MILLER    Kearney  
Y. W. C. A.  
Dramatic Club  
Camp Fire  
Kindergarten-Primary Club.  
*"I'm always in haste but never in  
a hurry."*



MARGARET MORRIS    Kearney  
Latin Club  
French Club  
*"What heart of man is proof against  
thy sweet seducing charm."*



RUBY MORRIS    Kearney  
Y. W. C. A.  
Dramatic Club  
*"A strong as well as lovely char-  
acter."*



CLARA MUES    Arapahoe  
Y. W. C. A.  
*"She has a good word for every-  
one."*



CHARLES NEALE    Stapleton  
Y. M. C. A.  
*"You are wisely silent of your own  
worth,  
And therefore it were a sin for others  
to be so."*



# BLUE AND GOLD

MABEL NELSON Rush City, Minn.  
Rural Club  
Aspasians  
Y. W. C. A.

*"As full of happiness as a hive full  
of bees."*

ALITA PARRIOTT Axtell  
Y. W. C. A.

*"She that was ever fair and never  
proud  
Had tongue at will and yet was never  
loud."*

EVA PATTERSON Kearney  
Y. W. C. A.  
Academy of Science and  
Mathematics

*"She has kept the whiteness of her  
soul."*

FLOYD PEASE Arnold  
Y. M. C. A.

*"That man who hath a tongue, I say,  
is no man if with his tongue he can-  
not win a woman."*

MABEL PHILLIPS Kimball  
Y. W. C. A.

*"I have no other but a woman's rea-  
son,  
I think him so because I think him so."*

GUY PICKETT Arriba, Colo.  
Rural Club  
Emanon  
Y. M. C. A.

*"But ah! Ye lords of ladies intellec-  
tual,  
Inform us truly, have they not ken-  
pecked you all?"*



# BLUE AND GOLD



LAURA POHLMAN  
Y. W. C. A.

Pierce

*"A daughter of the gods, divinely  
tall, and most divinely fair."*



EDWARD PTACEK  
Band  
Orchestra

Kearney

*"His music charms the F. E. E. T."*



BERNICE RANDOLPH Bell Plaine, Ia.

*"Sweetest garland to the sweetest  
maid."*



RUTH RUSSELL  
Y. W. C. A.  
Rural Club.

Mitchell

*"Why aren't they all contented  
like me?"*



JULIA SHANEYFELT

Marquette

*"She carries sunshine."*



EDNA SHIRLEY  
Y. W. C. A.

Alma

*"Faithful as the sun."*



# BLUE AND GOLD

ALICE SMITH Kearney  
Y. W. C. A.  
*"With shining gifts that took all eyes."*

MAYBELLE SMITH Kearney  
Y. W. C. A.  
Camp Fire  
*"Thou hast the gift of beauty."*

GRACE SNODGRASS Callaway  
Y. W. C. A.  
French Club  
*"She thinks much and says little."*

MARGUERITE STOCKTON Beaver City  
Camp Fire  
Rural Club  
Y. W. C. A.  
*"She was wont to speak plain and to the purpose."*

FLORENCE STRASSER Wood River  
Y. W. C. A.  
Aspasians  
*"Skilled in the graces of conversation."*

GERTRUDE TOLL Kearney  
Y. W. C. A.  
Academy of Science and Mathematics  
*"Her stature tall—I hate a dumpy woman."*



# BLUE AND GOLD



ELTIE TRAVIS Ord  
French Club  
Y. W. C. A.  
*"An affable and courteous lady."*

MABEL TUPPER Riverton  
Aspasians  
Y. W. C. A.  
Kindergarten-Primary Club.  
*"She nothing common did or mean."*

FRED WAGGONER Kearney  
Catholic Club  
Rural Club  
*"In that indolent but agreeable condition of doing nothing."*

MARION WALKER Mason City  
Y. W. C. A.  
Kindergarten-Primary Club.  
*"A zeal which one cannot but admire."*

CLAUD WEIMER Mason City  
Y. M. C. A.  
Dramatic Club  
Emanon  
*"Then he will talk. Ye gods! How he will talk."*

CARYLE WEINBRANDT Miller  
Latin Club  
Y. W. C. A.  
*"She has a humor that keeps the vision true and the mind sweet."*



## BLUE AND GOLD

BERNICE WEST Republican City  
Y. W. C. A.  
Kindergarten-Primary Club.  
Aspasians  
*"Exceeding fair she was."*

EDNA WEST Scotia  
Y. W. C. A.  
Rural Club  
Glee Club  
*"I have a very high regard for your ability."*

JOSEPH WETTON Big Springs  
Latin Club  
*"The manly part is to do with might and main what you can do."*

GARNET WHITE Sutherland  
Rural Club  
*"To live in hearts we leave behind is not to die."*

GLADYS WOODWORTH Ayr  
Kindergarten-Primary Club.  
*"Nothing great was ever achieved without enthusiasm."*

MARTHA WRIGHT Kimball  
Camp Fire  
*"She challenges even the stupid to consideration."*





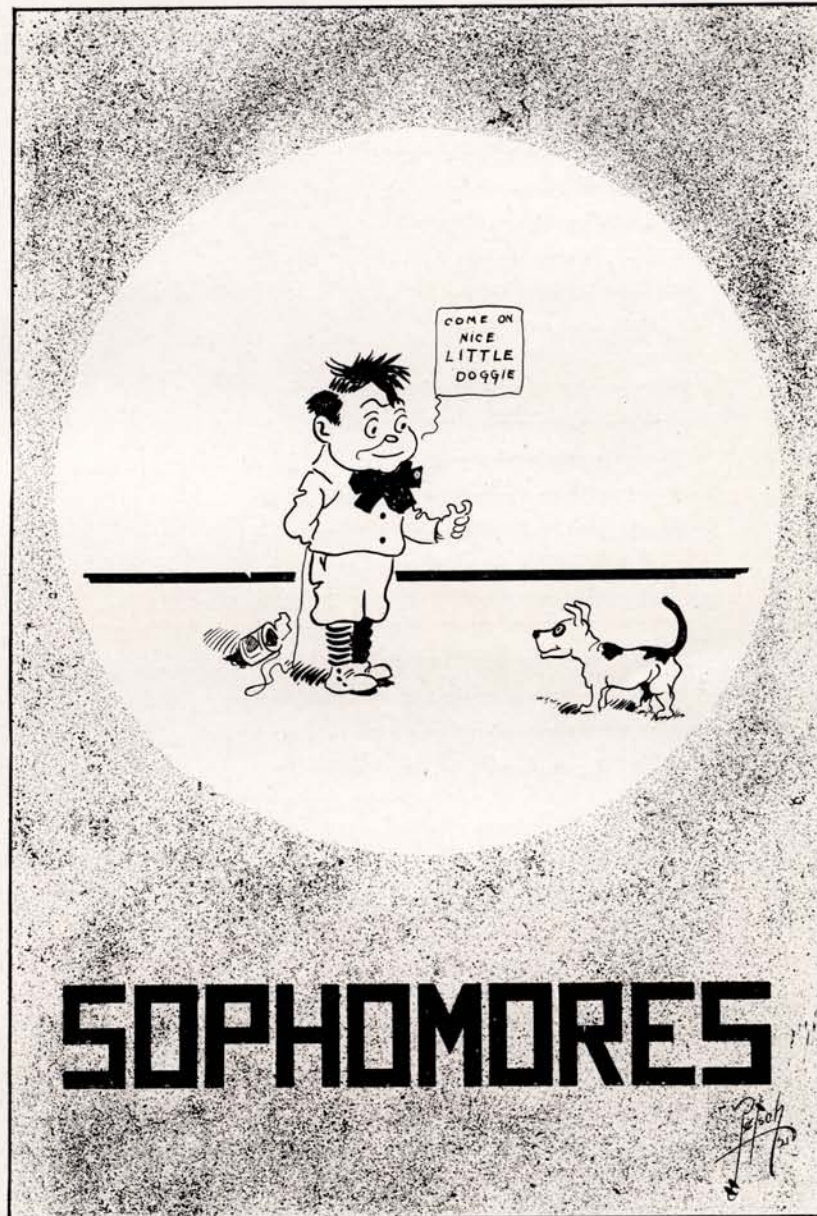
# BLUE AND GOLD



1921



BLUE AND GOLD



1921

## Sophomores.

Never was a better class  
In Kearney Normal School,  
Nota Bene! Each lad and lass  
Enjoying our peppy rule.  
Though our numbers are but few,  
Every Sophomore does his best,  
Each his duty tries to do,  
Nor does it without zest.

There's Inez Whelan, who leads our vim,  
Wilkins, our president, all hail to him.  
Eva, Elva, Estin, and Ed,  
Not one of them but should go to the head.  
Together with Olga and Sigri, of course,  
You can see our good times have a source.

Take Blowers, and Cummings, Hulda Johnson and Rose,  
Haven't you noticed how much each one knows?  
Really, with Ida, Mamie, Frances and Mary,  
Elvera, Alice, Springer and Mildred don't tarry  
Ever, when it comes a burden help carry.

Miss Dilley, our Sponsor's great,  
For her, we always save a date,  
She's helped us out in work and play,  
And to her we our tribute pay.

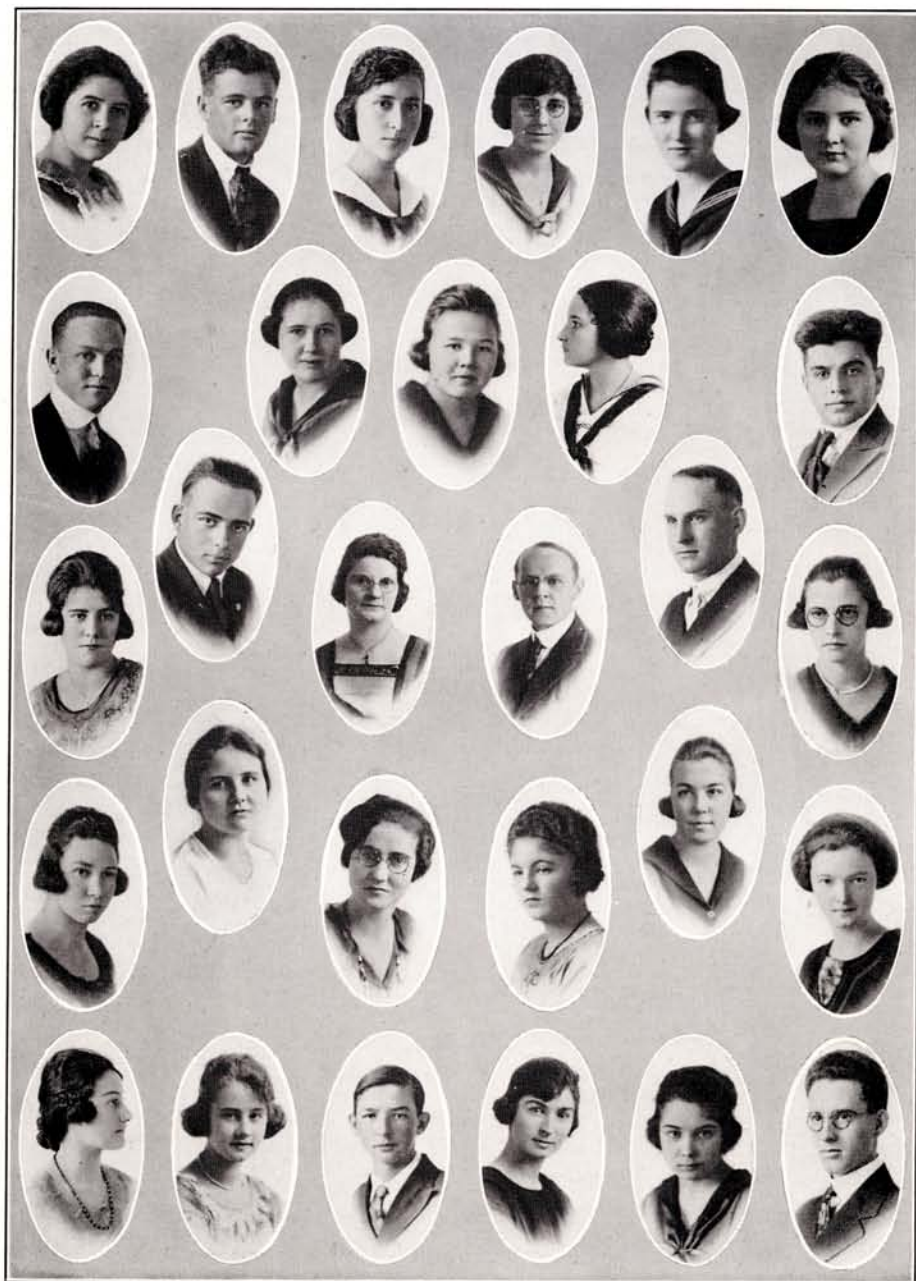
Mr. Phillips, our other Sponsor's true,  
He is always with us in what ere we do,  
To picnics, parties, hikes and all,  
He's quickly hastened to our call.

### CALENDAR OF YEAR.

September.....	Senior-Soph. Breakfast	February.....	Valentine Party
October.....	Party at Ida Cruise's	March.....	St. Patrick's Party
November.....	Party at Mr. Phillips'	April.....	April Fool's Party
December.....	Banquet at Gymnasium	May.....	Weenie Roast
January.....	Hard Time Party		



BLUE AND GOLD



1921

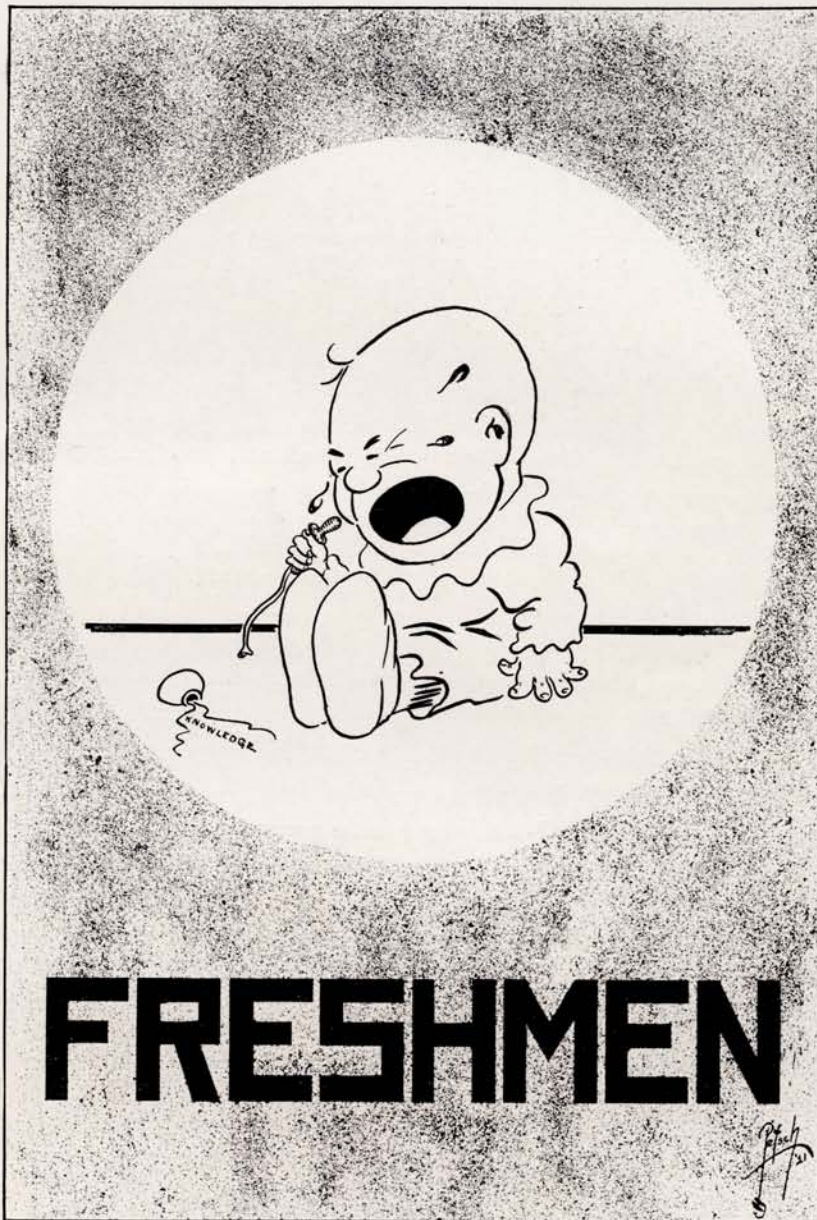


# BLUE AND GOLD





BLUE AND GOLD



**FRESHMEN**

1921

## Freshmen.

### OFFICERS.

#### First Quarter.

President ..... Laura Marzolf  
 Vice President ..... Hazel Holmes  
 Secretary ..... Addie McKinney  
 Treasurer ..... Florence Sterner  
 Yell Leader ..... Leota Thompson  
 Antelope Reporter ..... Hazel Holmes  
 Member of Deans Council.....

#### Second Quarter.

President ..... Ruth Baker  
 Vice President ..... Beulah Hevlin  
 Secretary ..... Fred Vanskike  
 Treasurer ..... Fred Vanskike  
 Yell Leader ..... Ruth Ragan  
 Antelope Reporter.....Geraldine Shamblin  
 .....Elsie Wilson

Mr. Olson and Miss Patton were appointed sponsors of the Freshman class. The first business meeting was held October 19, to elect officers.

We hiked out to Sleepy Hollow, October 25. Our supper consisted of weenies, potatoes, apples, buns, cookies and coffee.

In December we had a Christmas party in the gymnasium. Santa brought us dolls, whistles, horns, and other toys that children enjoy. The refreshments committee served coffee, sandwiches and oranges.

The other members of our class are: Ora Anderson, Niada Bair; Bernice Bretz, Elmer Cook, Lettie Corlis, Walter Codfrey, Inez Haldeen, Grover Haring, Maryday Harnley, Nellie Harris, Bernice King, Alice Meline, Russell Miller, Fern Moffett, Neva Phelps, Delilah Smith, Lona Thompson, Ruby Thompson, Richard Vest, Fern Fisher.



BLUE AND GOLD



1921

## Extension Work.

There are two kinds of extension work regularly done by the State Normal at Kearney. These are work done by correspondence and through study center classes. The work done in study center classes is very much to be preferred to that done in correspondence, mainly for the reason that the work is more thorough than can be done in correspondence, and also is done under the direct, personal instruction and supervision of a number of the faculty of the Normal School.

The aim of study center work is to provide class instruction and offer college credit work to those who are in the service of teaching and who therefore, cannot do residence study, but nevertheless desire to carry on their study and professional training. This is a most laudable ambition and should be encouraged. No teacher is quite so dead as the one who has lost her professional ambition.

The scope of work done in study center work covers a wide range of subject matter as well as extensive territory. At the present time the Normal has organized and is now conducting through its regular faculty more than thirty study center classes in different parts of the state.

Classes are organized at points where ten or more pupils can come together about once every two weeks for group study. The student pays three dollars for each semester hour of college credit the course offers. The traveling and other expenses connected with the work are borne by the Normal School.



PROF. SHREVES' STUDY CENTER.



BLUE AND GOLD



PROF. ANDERSON'S STUDY CENTER.



MISS CRAWFORD'S STUDY CENTER.

1921



## *The Training School.*

In learning the art of teaching there are three principal steps: (1) the attainment of knowledge of subject matter; (2) the study of the theory of teaching; (3) practice teaching. It is for the sake of training student-teachers in correct habits of teaching that the training school primarily exists. At the same time, it is a well recognized principle that in a training school the welfare of the pupils is not to be neglected. The photographs accompanying this article will demonstrate that the pupils in the training school are receiving all the advantages of a modern education.

Perhaps one of the most striking features of the school is the care taken of the pupils' health. Pupils are subject to a careful physical examination by the school nurse. A complete physical record and health history of each child is kept on file in the school for the use of the teachers in determining what is best for the welfare of the child. Physical education is given considerable time under adequate direction. Pupils have the advantage of a splendid gymnasium and swimming pool. Conditions in the rooms are very superior on account of the fact that the number of children admitted is limited.

The children of the training school have exceptional opportunities to engage in musical and dramatic productions of high merit under the direction of the very best talent the Normal School affords. In the future this activity will be much extended. One of the new developments along this line is the organization of the high school orchestra.

While physical education, music, and similar activities are of great importance, it is recognized that schools were founded primarily to teach pupils the knowledge which is contained in books. Student-teachers are made familiar with up-to-date methods of teaching the various school subjects by observation of good teaching in the training school and by practice in correct methods of teaching. Great emphasis is laid upon efficient silent reading, project-problem instruction, and the use of economical and efficient devices in the different subjects of instruction. Pupils in the elementary grades are engaged in the study of problems in local life and history which requires for complete development, wide reading and co-operative work as a social group. It is the aim of the training school to bring the student-teacher into contact with work of the most approved type known at the present time.

To the outsider the least interesting feature of the work of the training school is the training of teachers; it is less spectacular as an activity and less understood by people in general than other phases of school work.

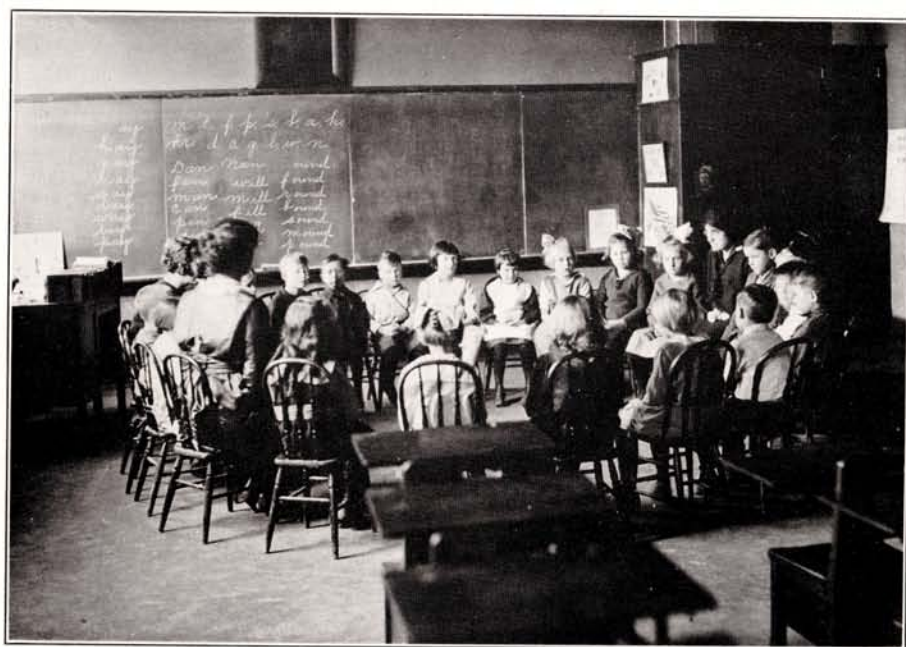
From the standpoint of the Normal School, it is, however, of extreme importance. Therefore, proper emphasis is laid upon good teaching through observation of teaching in the junior year and through practice teaching in the senior year. The purpose of the latter is to train the student in proper habits of teaching and to give him ideals of right method which he will carry on and perfect in later years. Close personal supervision, demonstration and conferences form the devices used to perfect the student-teacher in his work.



BLUE AND GOLD

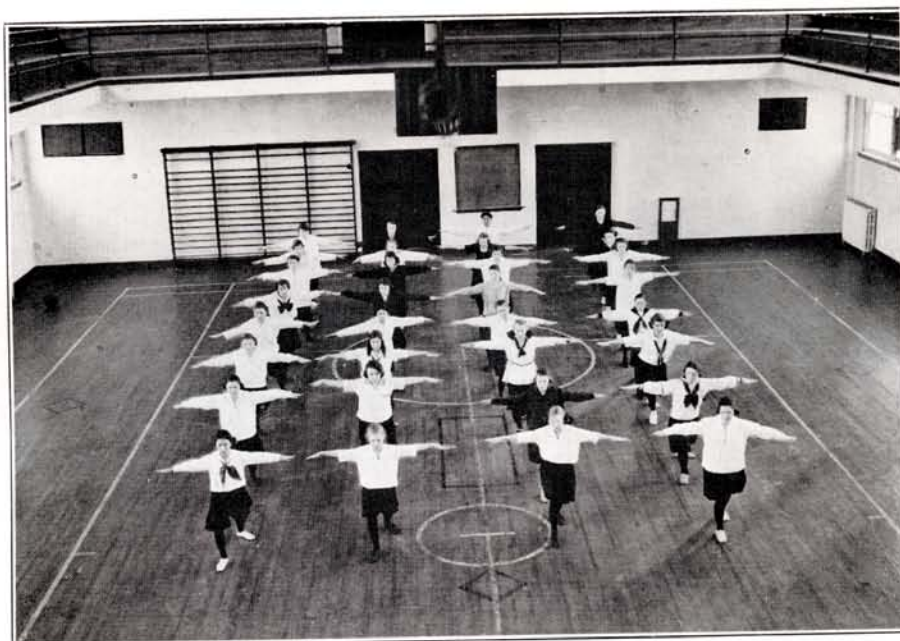


KINDERGARTEN GROUP.

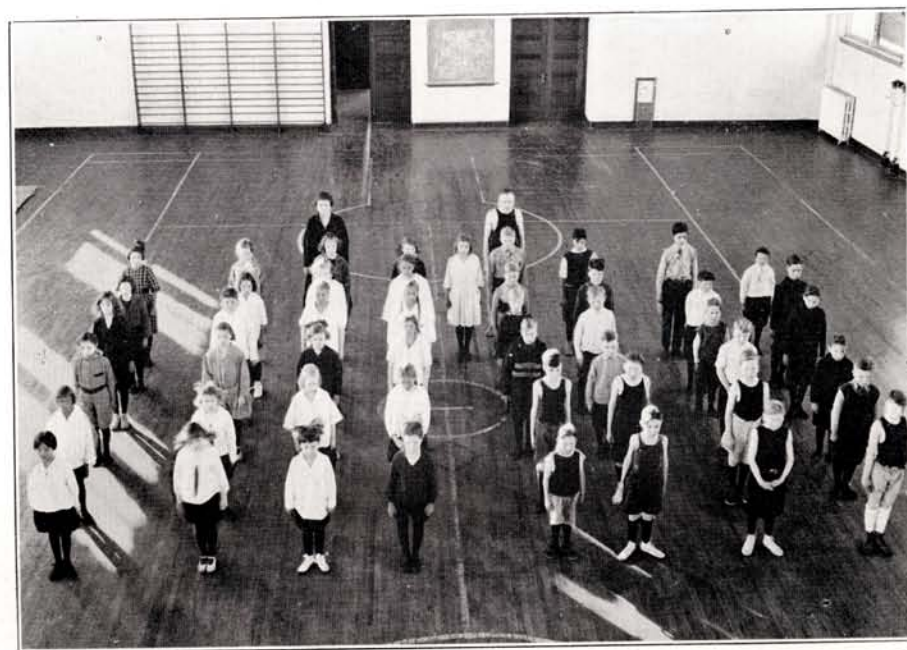


FIRST AND SECOND GRADES.

BLUE AND GOLD



NINTH AND TENTH GRADES.



SEVENTH AND EIGHTH GRADES.



## *Summer School Policy.*

For the summer school of 1920 the institution timidly ventured on a new and far-reaching policy for the conduct of the summer term. The extraordinary large enrollment that characterizes the sessions held during the vacation term of elementary and secondary schools demonstrated that there was a widespread and tremendous interest in professional work, hence there was a greater opportunity to do constructive work with professional teachers than ever during the regular year. Arrangements were made whereby the very best educational talent in the United States was brought to the institution during June and July. These prominent educators conducted classes and gave convocation addresses during the time they were present. These celebrities ministered to the needs of Nebraska during the summer term of 1920:

Dr. Geo. D. Strayer, of Columbia University; Dr. W. F. Russell, University of Iowa; Dr. Wm. M. Davidson, Superintendent of City Schools, Pittsburg, Pennsylvania; Superintendent J. H. Beveridge, Omaha, Nebraska; Professor J. W. Searson, Kansas Agricultural College, Manhattan, Kansas; Dr. Howard R. Driggs, New York City; Professor C. H. Sargent, Ft. Collins, Colorado. The inspiration and professional morale imparted by this array of talent has already had a far-reaching effect.

For the coming summer term, June 6 to July 29, 1921, the array of talent is as follows: Dr. Geo. D. Strayer, Columbia University, June 6 to June 17; Dr. M. V. O'Shea, University of Wisconsin, June 8, 9, 10; Professor J. W. Searson, Kansas State Agricultural College, June 23, 24, 25; Superintendent J. H. Beveridge, Omaha, June 27, 28, 29; Professor Burges Johnson, Vassar College, June 30, July 1; Dean Hattie Moore Mitchell, Pittsburg, Kansas, July 14, 15; Superintendent M. C. Lefler, Lincoln, Nebr., July 18, 19; Dr. Ernest Horn, University of Iowa, July 20, 21, 22.

This policy, if continued, can but powerfully affect all schools of Nebraska, from the colleges down to the lowest grade of the primary. Nothing in professional life is more invigorating than the introduction of new ideas and ideals from educational sources outside the immediate environment. Faculties are stimulated, students are energized, and school interests in general feel the nourishment of great minds that are establishing ideals and fixing policies throughout the Nation.



## *Teachers' Placing Bureau.*

The Teachers' Placing Bureau of the Nebraska State Normal at Kearney was established during the year 1918-19. It serves as a clearing house for the prospective teachers and the public schools of the State of Nebraska. While it endeavors to serve particularly alumni and former students of this school, the bureau has been called upon many times to serve teachers who have never attended here and schools which are located beyond the confines of Nebraska.

Our policy has been to recommend only qualified teachers to superintendents and boards of education, teachers whom we feel, under the conditions stated, ought to make good. If at any time, we have no available qualified candidate for a given position, we are glad to submit the credentials of the best we have and to state the exact merit of the candidate.

The work of the bureau has extended throughout the entire school system—the kindergarten, the grades, the high school, including principalship and superintendency.

The bureau is composed at the present time of four members of the faculty, H. O. Sutton, chairman, Department of Physical Science; Lula M. Wirt, Dean of Women; M. S. Pate, Department of Mathematics; G. A. Yoakam, head of the Training School.

It becomes the duty of this committee to look into the scholastic and professional record of all names presented to them for placing. The information thus gained and classified becomes the basis of their evaluation of the candidate.

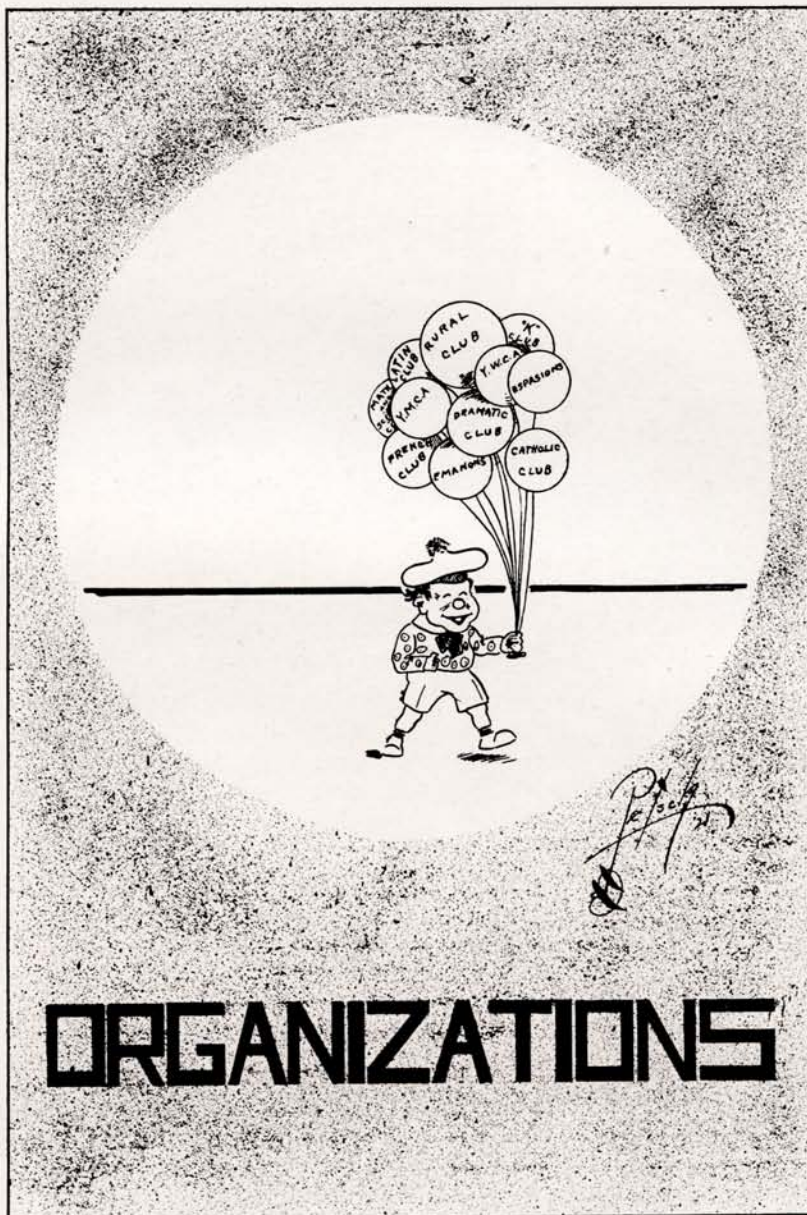
The bureau has also inaugurated a follow up work which promises to be a very valuable asset to the school and teaching fraternity. We are pleased to learn of a teacher's success and to help her or him to a larger field of opportunity. We also desire to know of any failures and to find out the reasons for the same that we may be able to better serve both teacher and school.

The advantages of such a bureau to both teacher and school have been proven beyond question. With about two thousand calls from boards and superintendents and the placing of about five hundred teachers during the past two years, the schools have been, in the main, better equipped and the teachers more favorably placed than they otherwise might have been.

The schools of this part of the state are looking more and more to this institution for assistance in securing teachers. The demand for capable teachers greatly exceeds the supply.

The services of this bureau are free of cost to school officials, to teachers who are graduates or former students of this institution, and to other teachers who desire to avail themselves. The bureau desires to co-operate with school officials in all ways that will make for the more effective placing of teachers. Teachers desiring to enroll will send to the Placing Bureau for enrollment blanks.





# ORGANIZATIONS

BLUE AND GOLD



Y. M. C. A.

1921





Y. M. C. A. ROOM.

## Y. M. C. A.

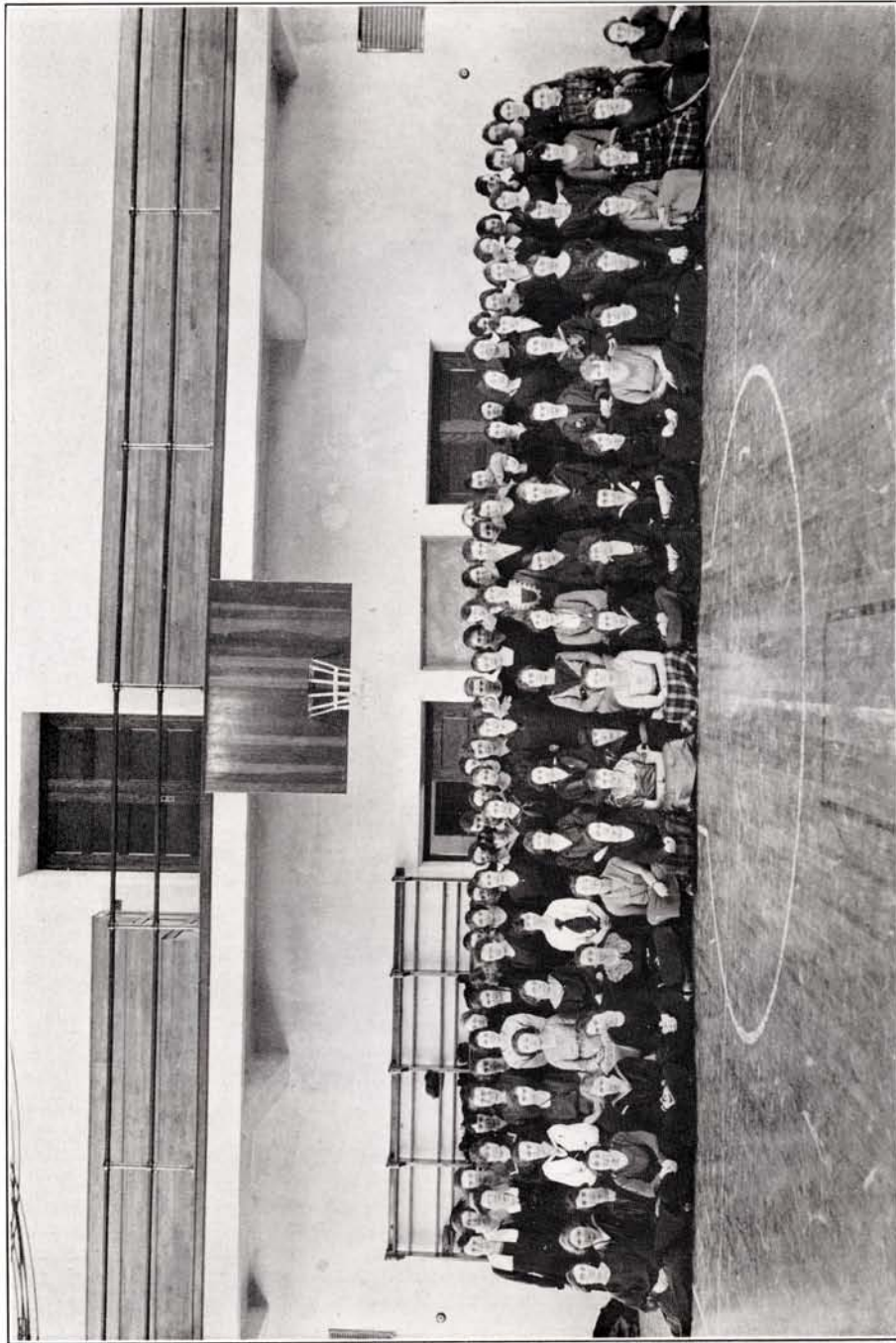
The past year has been a prosperous one for the Y. M. C. A. and it is now on an excellent footing with a rapidly increasing list of members. No magic process has caused this growth of the organization, but the interest and support of the men has been gained by the excellency of the programs and by real work. Speakers were secured to speak on subjects which interested and helped the men, and then, in a subsequent program, the problem would be turned over to an open forum discussion by everyone present.

At the first of the year, on the 22nd of September, the Annual Watermelon Feed was given by the Y. M. C. A. Every real man in school attended and made it a genuine get-acquainted affair.

Again, on November 3, the men got together under the auspices of the "Y" in a regular stag party. Some of the fellows played basket ball while others engaged in the kinds of acrobatic or athletic stunts which they liked best. Such get-together affairs promote a feeling of unity among the men and help to get them acquainted with the work of the Y. M. C. A.

The financial affairs of the Y. M. C. A. have also been well managed and the records now show them to be in good shape. Although over two hundred and fifty dollars have been expended in furnishing the "Y" room, which is in the gymnasium, further investments in a piano and other necessities are contemplated. Such improvements have made the room a well furnished, home-like den where the fellows can spend their leisure time. Another important branch of the financial activities is the fund which is kept in reserve to aid young men in the school who are in need of help. This part of the work represents real service and is greatly appreciated.

BLUE AND GOLD



Y. W. C. A.

1921





Y. W. C. A. CABINET.

## Y. W. C. A.

The Y. W. C. A. was made a part of the Nebraska State Normal School at Kearney in the fall of 1905. The purpose of the organization is to help the young women of the school get a vision of better living and an inspiration for greater service. Each week there is held a devotional meeting which is very helpful and uplifting.

The executive officers of the organization consist of the president, secretary and cabinet officers. The cabinet is composed of seven girls who are the chairmen of the various committees.

The Y. W. C. A. has a large and attractive reception room with a well equipped rest room and kitchenette. The expenses of the year are covered by funds obtained from the Holiday Festival and the selling of candy, pennants, etc. This work is under the supervision of the finance committee.

During the year there are many social events, including an annual banquet given to the members in the fall and an all school "Washington" party in February. Beside the special parties, teas are given during the year, which are attended by all girls of the school.

The proceeds from the Holiday Festival have been used for the furnishing of the Y. W. C. A. rooms. This year quite a surplus was left which has been made into a permanent loan fund. This fund is to be loaned to young women of the Normal who desire financial aid while attending school. It is hoped that from year to year this fund may be increased, thus enabling the Y. W. C. A. to help more students.

BLUE AND GOLD



Y. W. C. A. ROOM.



OFFICE OF DEAN OF WOMEN.





CATHOLIC CLUB.

### *Catholic Students Association*

The Catholic Students Association, which was organized in the early history of the Normal, is a distinctly Christian organization. For the past nine years, under the sponsorship of Prof. B. H. Patterson, the club has carried on very creditable work in the study of Catholic belief and practices and reviews of Catholic literature.

The room which has been so elegantly furnished by the Nebraska Knights of Columbus is a pleasant place in which to hold weekly meetings. The generosity and interest in the work of the association shown by the Knights of Columbus is inspirational to the students.

Several social gatherings are held during the year. The students show a splendid spirit of co-operation in school activities and in the affairs of the local parish.

BLUE AND GOLD



CATHOLIC CLUB LIBRARY

1921





CATHOLIC CLUB RECEPTION ROOM.

BLUE AND GOLD



RURAL CLUB.

1921



## Kearney Rural Club

Gladys Carver ..... President    Edna West ..... Secretary-Treasurer  
 Clyde Williams ..... Vice President    Mr. and Mrs. R. W. Powell ..... Sponsors

The Kearney Rural Club was organized during the summer of 1916 under the sponsorship of Professor L. B. Sipple, then of the Rural Department. Hans Olsen was made it's first efficient president. During this initial summer the club enrolled a hundred members. Since that time the organization has had a continuous and steady growth, and has not only grown in number but in influence and service.

Five years later, the summer of 1920, found Han Olsen president of the club again. Hans could now count his members by two's rather than by one's as he did back in the summer of 1916. For now the organization has not one hundred members but two hundred. This large membership during the summer of 1920 easily made it the largest organization ever found in Kearney Normal school. These figures only go to show the strong appeal the club has for the student body. In this connection it is an interesting fact that half of the present membership are from other departments than the rural department. This certainly shows the club's wide influence and application.

The picture found in connection with this article compared with pictures found in earlier annuals will give a striking illustration of the increased strength of the organization during the regular school year. The enrollment for the winter quarter has run up to such numbers as make it the largest organization during the present regular year, as you can readily see by comparing pictures in this annual. But mere membership does not mean so much as the fact that we have had a regular attendance of sixty people at the weekly meetings during the past six months. At times there have been as many as seventy-five on the floor engaged at folk dancing. We speak of this matter of attendance because it is the result of definiteness on the part of the officers and program committee in planning good programs.

We have featured two main classes of programs this year. First, the educational and community interest lectures by people of experience and ability found outside the membership of the club. Some of these people have been out-of-town educators, as well as fellow townsmen educators. In the second place we have featured programs by students and members of the club. These programs have not been of the old type, made up only by readings and music, but they have been programs that demand initiative and originality in the planning and carrying out. And it goes without saying that they always function in the solution of rural problems. The club feels complimented in that these fine programs have attracted many visitors from the student body and from the town.

We trust that the future of the club may be as happy and prosperous as the present year has been. For it is in this organization that students learn the importance and the art of community building and leadership; many would not get this ability elsewhere. The greatest step forward in education during the last twenty-five years has been that of community education, community education along the lines of recreation, entertainment and moulding public opinion. It is this great program that we learn of each Tuesday night at our meetings.

The success of this comparatively new club is due to an enthusiastic membership and an efficient bunch of officers at all times. Above we present the names of officers only, it being too impractical to present such a large list of members. But we have at least tried to represent the spirit of the membership as accurately as possible in what we have said about our club.



BLUE AND GOLD



EMANON SOCIETY.

1921



## Emanons

Among the societies which are really doing things in the school, the Emanon society stands in the foremost ranks. With a history dating back to the beginning of the school, the organization has some ideal traditions to live up to as well as a future to adorn with records of great work.

One of the big events in the history of the Emanons during the past year was the debate with the Aspasians, which took place on November 18. Although one of their speakers was taken sick a few minutes before the debate, the other two men went into the battle and immersed with one vote of the judges, while the girls had secured two. Partially to prove that they were good losers and partially to promote co-operation and good will between the societies, the Emanons then invited the Aspasians to join in a banquet, which was held December 2. This banquet was the first in which both organizations ever took part and was an immense success.

Another of the valuable objectives toward which the Emanons have been working is the development of prospective debaters. Believing that debating is the best single activity in preparing students for an active part in life, the society has constantly endeavored to help the men of the school to become proficient in this art.

Although the list of members was rather small at the first of the year, it has been steadily growing and the present organization consists of a large group of real live men. There is no room for "dead" or disinterested people in the Emanons and experience has shown that such people are soon eliminated.

## Debating

Debating has always aroused a great deal of interest in K. S. N. and especially keen is the interest which has been exhibited this year. The victories of last year have done much to encourage those who have hopes of entering into the contests this season.

Debating, to the debater, is the absorbing passion, the supreme test of ability. Have you ever known a man, who, having once played football, is not always eager to get back into the game? Likewise, we challenge you to show us a debater who does not thrill at the challenge of the "Resolved: that—"

Not only does debating have a positive effect upon the individual, but it also deepens the respect for a school. A school which has a successful debating team, or which is known to encourage debating, has the enthusiastic support of people who are doubtful about athletics; while the school which combines debating and athletics is one which commands favor and respect from everyone.

It is, therefore, with intense enthusiasm that students are taking up debating this year. Eleven students tried out February 5: Edith Meyer, Hester Green, Edith McBride, Clara Stephens, Claude Weimer, Rollie Bunney, Ila Weeks, Lee Wells, Edward Hanson, Henry Crozier and Guy Pickett.

With the loyal support of K. S. N. boosters, the assistance of Coach Phillips, and the ambition of the debaters, how can the debate season be other than interesting and successful?



ASPASIAN SOCIETY.

### *Aspasian Literary Society*

If Aspasia herself had been in K. S. N. during this year, and had been elected sponsor of the club named in her honor, the Aspasian Literary Society should have experienced great difficulty in surpassing the record which it has made under the sponsorship of Miss Riggs.

Primarily, when one is an Aspasian, one is expected to do things, and so one does them. It does not matter whether it is straightening out a tangle of parliamentary law, or beating the Emanons at debate. Both are accomplished to the satisfaction of Aspasia, before the task is called complete.

The Aspasian is socially as well as practically inclined. For one evening, the Aspasians and Emanons forgot their deadly rivalry, and met in friendship at a joint banquet.

To be an Aspasian means to be a keen and ready thinker, it means to be in possession of self-control and self-respect, it means to be a good winner, and as good a loser. It means to have ideas and it means to have a good start on the road to success, for whoever has ideas which are worth while, and which she can express is "truly master."



## Dramatic Club

Under the expert supervision of Mrs. Doris Smith, the K. S. N. Dramatic Club presented a number of programs and plays during the term of 1920-21.

On November 19, a Chautauqua Night, consisting of musical numbers, readings, "Living Pictures," "Chalk Talks," and "The Clod," a Civil war play, was presented in the Normal auditorium.

The management of the Y. W. C. A. Orpheum, December 19, was given over to the dramatic club. Members of the club presented several numbers of the program, including "Overtones," a short play showing the dual personalities of two society women of New York.

A rural play, "The Vision of the Homeland," was given January 28. This was also given at Glenwood, Amherst and Poole, under the auspices of the Rural Club in the interest of consolidated schools.

Another play has been planned for the spring quarter and the club has agreed to present three numbers of the Normal Lyceum course for 1921-22.

### OFFICERS.

#### First Quarter:

Arthur Petsch ..... President  
Evelyn Allen ..... Vice President  
Lucille Forsyth ..... Secretary

#### Second Quarter:

Florence Miller ..... President  
Ruby Morris ..... Vice President  
Mabel Evans ..... Secretary

### MEMBERS.

*Mrs. Doris Smith, Director.*

Evelyn Allen  
Ethlyn Berger  
Rollie Bunney  
Phillip Cummings  
Francis Garvin  
Ruby Morris  
  
Florence Miller  
Kathleen Curry  
Helen Curry  
Mabel Evans  
Amy Dunaway  
  
Charlotte Abrahamson  
Roxana Erb  
Vinnie Shawkey  
Roy Larson  
Earl Cochrane  
Hazel Parks

Clara Stevens  
Kathryn Martin  
Ethel Garrison  
Lucille Forsyth  
Laura Rundle  
Alta Kibler  
  
Clyde Williams  
Florence Drake  
Arthur Petsch  
Ila Weeks  
Pearl Plank  
  
Mary Lantz  
Mabel Miller  
Sabina Costello  
Martin Nelson  
Frances Meline  
Grace Jones

BLUE AND GOLD



DRAMATIC CLUB.

1921



BLUE AND GOLD



1921

## BLUE AND GOLD



### LATIN CLUB.

**FIRST ROW**—Nellie Jacobson, Cordie Peterson, Maurine Holtz, Margaret Morris, Elizabeth Squires, Rosa Verner, Alice Murphy, Edith Geary.

**SECOND ROW**—M. Evelyn Dilley, Ethel Daddow, Bernice Goff, Ruth Ragan, Ora Anderson, Cleta Randall, Dorothy Weeks, Charlotte Shick, Elvira Anderson, Nelle Morris, Esther Enochson.

**THIRD ROW**—Anton Brugenkamp, Emerson Baker, Clyde Williams, Caryle Weinbrandt, Isabelle Welsh, Florence Drake, Joseph Wetton, Vere Wilkins, Richard Vest.

Consul .....	Margaret Morris
Scriptor-Quaestor .....	Maurine Holtz
Sponsor .....	M. Evelyn Dilley

"SEQUAR ET ATTINGAM."





FRENCH CLUB.

## Le Cercle Francais

(A force de forger, on devient forgeron.)

### OFFICERS.

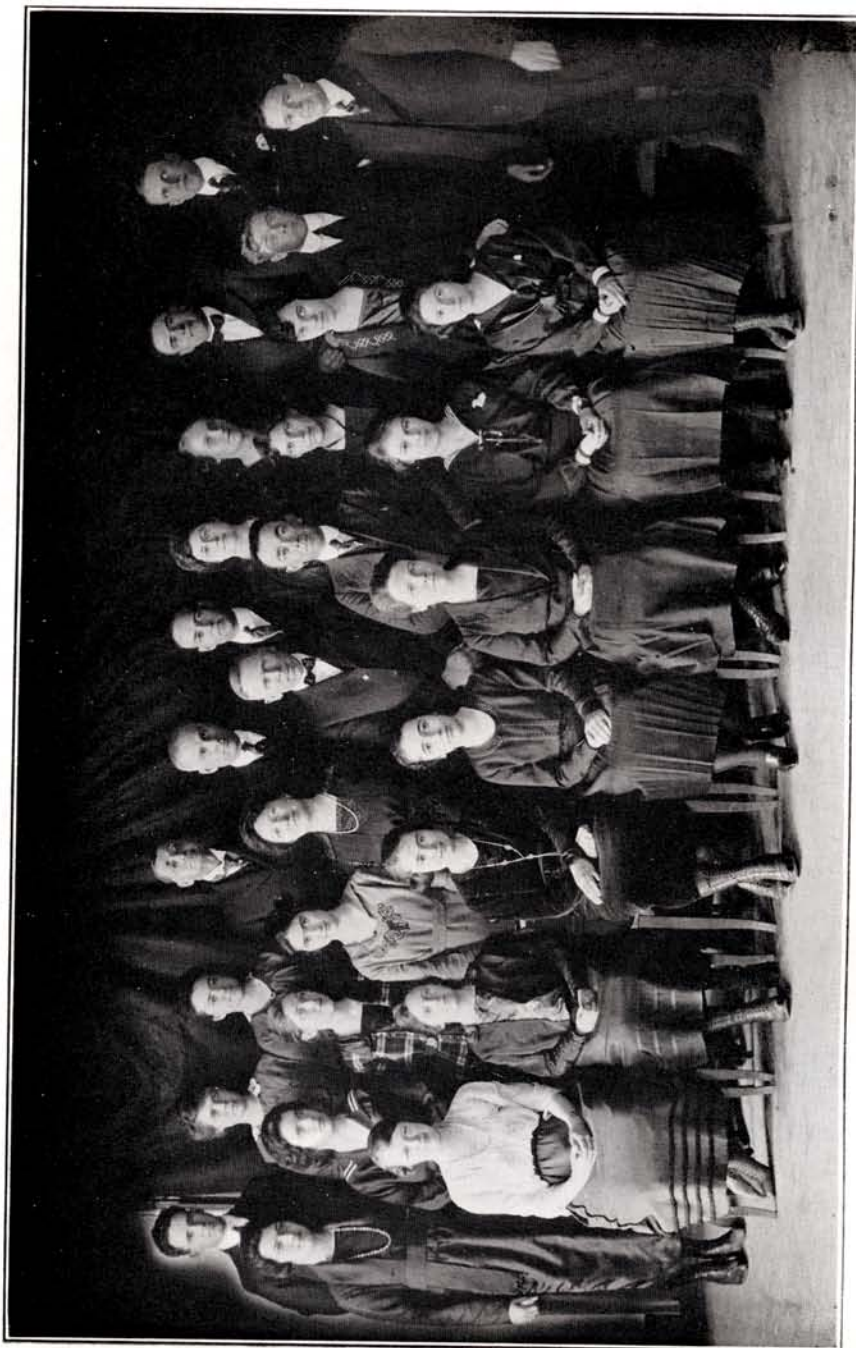
Esther Enochson .....	President	Edna Cone .....	Secretary
Clara Mortensen .....	Vice President	Eltie Travis .....	Treasurer
Antelope Reporter .....		Mildred Gravely .....	

Le Cercle Francais is an organization whose mission is to supplement the work of the class room. It offers additional opportunity for practice in hearing and speaking French and for acquiring a broader and more sympathetic understanding of French life and French people. Games, "eats" and "hikes" not only help to create a French atmosphere, but also give a sense of freedom and good fellowship which are indispensable to a realization of the purpose of the club.

The monthly programs consist of the usual plays, recitations, songs, etc. Some of the most interesting programs of the year were: A dramatization of a scene from Moliere's *Le Malade Imaginaire*, French ghost stories, a Christmas play, dramatization of anecdotes and musical programs.

Le Cercle Francais is helpful to all students of French, but especially so to those who are preparing to teach the language. The club is open for membership to all of the French department and to all others who are especially interested in French. Active members must have had one semester of French. First semester students may be associate members.

BLUE AND GOLD



ACADEMY OF SCIENCE AND MATHEMATICS.

1921



## *Academy of Science and Mathematics*

The Academy of Science and Mathematics is an organization which dates from March 4, 1916. The aim of the organization is to encourage and develop student initiative in modern scientific research. Its members are some of the most active and enthusiastic students of the institution who avail themselves of the opportunity of exchanging thoughts and comparing ideas in scientific investigation. It is intended for students who are majoring in these subjects, but visitors are always welcome to the monthly meetings where very interesting current topics are discussed.

Faculty members likewise find it an inspiration and an aid to co-operation between the departments which depend to a greater or less degree upon each other. The year's programs have added much interest to the meetings. "The Mechanism of the Automobile," by Claude Weimer; "Supervised Study in Mathematics," by Mr. Pate; "The Animal Mind," by Miss Esther Enochson; "How Statistics Aid in Arithmetic," by Miss Alma Turley, indicate the kinds of material discussed.

The organization is truly a live one, filled with wide awake enthusiastic people.

## *Kindergarten-Primary Club*

Bow Wow Wow  
Come on my little master;  
Come let's race  
To see who runs the faster.

It would be difficult to find a club more enthusiastic than the Kindergarten-Primary Club for it is among the first every time in work, play and get-to-gether spirit for the school. The club organized early in the year with thirty-six members, and meets once a month for a social time.

The new girls are subject to a critical inspection and pass through such a trying period of initiation that only the best looking, the best behaved and the best all round girls in school are eligible for membership. The club carries on seasonal activities, has stunt nights, and progressive parties. It has its annual banquet in the kindergarten room, an annual children's party and an annual May breakfast. At this last meeting officers are elected for the ensuing year. Best wishes are extended to all club members and hopes expressed that all members might meet again.

The Kindergarten-Primary Club belongs to the International Kindergarten Union and hopes to be represented at the meeting to be held this year in Detroit, Michigan.

Our motto for this year is "Catch us if you can."

BLUE AND GOLD



KINDERGARTEN-PRIMARY CLUB.

1921





CAMP FIRE CLUB.

## Camp Fire

On the second day of the Hunting Moon  
At the call of Ya-i-wah-nah,  
Gathered all the Indian Maidens  
Gathered in from reservations,  
Coming in from other Councils

To the camp of Uncapapa.  
Old and new alike made welcome  
By the guardian, Ya-i-wah-nah.  
All are friends around the Camp Fire,  
Each one sounds the greeting, "Kolah."  
Plans were made for other meetings,  
Plans for health crusades and service,  
Then the happy council ended

Ended thus with songs and laughter.  
When the Autumn Moon had reddened,  
And the leaves were falling fast  
All the Indian Maids assembled,  
Came they then with baskets laden  
And their hearts with love united.  
Tramping over hill and valley  
With their merry songs and laughter  
Reached at last the goal they sought for,  
Reached the Park of Glenwood Forest.  
Opened then their baskets many  
And a feast before them lay,  
Feast to charm the heart of maiden.  
While they rested from their journey,

Chanted they the songs of Camp Fire,  
Sang the songs of Uncapapa.

Listened they to words of wisdom  
From the guardian, Ya-i-wah-nah.  
Then with happy hearts and singing  
They began the homeward journey.  
Thus spoke worthy Ya-i-wah-nah,  
To the Maidens of the Camp Fire,  
To the shy young Indian Maidens  
"All the world must know our secret,  
We, to them must send the message

Of the spirit of the Camp Fire."

At the waning of the Snow Moon,  
When the Hunger Moon had risen,  
Met the Maidens then together  
Met them on the stage together,  
Where with true dramatic efforts  
Told the story of the Camp Fire  
Told of Work and Health and Love,

Of the true Wohelo symbol.  
From the words of charming Firefly  
Magic words of Wah-wah-taysee,  
Each one learned the useful lesson  
That 'tis she must find the "Treasure,"  
And 'tis she must send the message  
To her sister far and near,  
Of love to every living creature  
Love that comes from serving others.



DEAN'S COUNCIL.

### *The Dean's Council*

The Dean's Council was organized in 1917 under the direction of Miss Gertrude Gardner, former dean of women and has always been an important factor in the promotion of student activities. The policy of the council is not to advance its own interests, but to further in every way any project or activity of the whole school or the various organizations. Its aim is always to promote a spirit of unity among the students and assist in upholding the highest of standards.

The girls' meetings, held each month, are under the supervision of the Dean's Council. During the past year, much time was given to problems relating to "Woman Citizenship." Excellent talks on topics preliminary to "The First Vote" were given by Mrs. Sutton, Miss Jennings and Miss Riggs. At the February meeting, a playlet written by the Misses Elvera Anderson, Mabel Nelson and Pauline McVey was dramatized by the council girls. The play in an attractive form, presented the problems of dress and many social usages which come to girls in their early college years.

The council members feature greatly in the social life of the school, assisting Miss Wirt in many of the all school functions, such as the Harvest Party, which was "A Get Acquainted Party" for all the girls and faculty ladies; also helping her in a series of teas for the girls at the home of Mrs. Steadman, as well as the tea for the two hundred hostesses, who so graciously opened their homes to the summer students. The May Party, the "All School Formal" is always planned and given by the girls of the council. The fourth annual event of this nature was in the form of a Japanese Party. A most artistic May-pole dance, directed by Miss Knutzen, and Japanese dances and songs and many group games, furnished a wonderful evening to the entire school.



## Department of Health Education

The Department of Health Education of the Kearney Normal School began its existence about November 1, 1920 with the securing of a school nurse. A room on the third floor of the gymnasium building was made ready and equipped for health examinations and dispensary service. This office was ready for work January 3, 1921 and has been in constant use since opening.

It is the aim of the department to extend the knowledge of prevention of disease and its practical application throughout the school. The saving of loss of school time alone would make this department worth while.

School health work is much broader than the discovery and treatment of physical defects. It includes the activities which will establish health habits, instruction in hygiene which gives teachers an active interest in showing results in better health conditions among the children, and less school time lost by preventable disease; sanitation and physical education are also developed as a part of every school program. At present, teachers are required by the law of Nebraska to make an examination for certain physical defects which retard the children's progress in school, as well as lay the foundation for continued ill health and oftentimes result in chronic invalidism.

Health examinations made in the grades of this Normal School since this department has been established reveal that over one half of the pupils in the grades are underweight. Many, after receiving their weight record, are anywhere from ten to twenty pounds underweight and are following instructions given by this department, thereby gaining in weight.

Immunity to disease depends largely on healthy red-blooded cells. These cells are created in the body by a sufficiency of nutritious food. Common errors in the feeding of children are frequently revealed when one shows interest in the undernourished class and inquires into other dietary.

Teachers will be given an opportunity soon to make a special study of this group, finding the cause and observing its remedy. Combining with the Home Economics department of this school, the Health department will establish a nutritional clinic where the undernourished may obtain lunches at cost and build up their weight and health, while others learn how it may be carried out in their schools when they find the same problem.

This department will also extend an opportunity to those interested in taking a course in Home Nursing. Demonstrations and lectures will be given and the course will be made a very practical one. Many other plans are developing for health projects—plays, pageants and numerous health programs will be furnished throughout the year.

The health examinations and teaching includes every department of the Normal School and its affiliated schools. It is a busy department, combining health instruction and nursing care for any who are ill.

Health, in the sense of a strong, enduring, disease-resisting, flexible, responsive body mechanism, is quite as much a matter of acquisition as is ability in playing the piano or ability to manage men. There are differences in native endowment, to be sure, but each individual must earn health by obeying the laws of health, just as he must develop any other endowment. Health, like happiness, is to a large extent a matter of habit. If it is to be taught successfully it must be practiced and its simple principles must be observed.

"Health first in the schools" should be the aim of parents and teachers until its echo has returned every school child in fit physical condition to benefit by education.

Let us waste no more lives from preventable disease. Everywhere there is a demand for teachers who can teach health. Are you one of them? If not prepared—here is your opportunity.—Kearney Normal School. Lillian B. Stuff, R. N., Director of Health Education and School Nurse.



BLUE AND GOLD



K. S. N. BAND.

1921



### *The Band.*

The Normal School band is one of our most useful and valuable organizations. Under the able direction of Prof. B. H. Patterson, the band has improved the quality of its work, until it is now second to no other in the state. Aside from the unusual opportunity for musical training offered to students, the band adds much to the spirit of athletic and social events, at which it willingly appears whenever called upon.

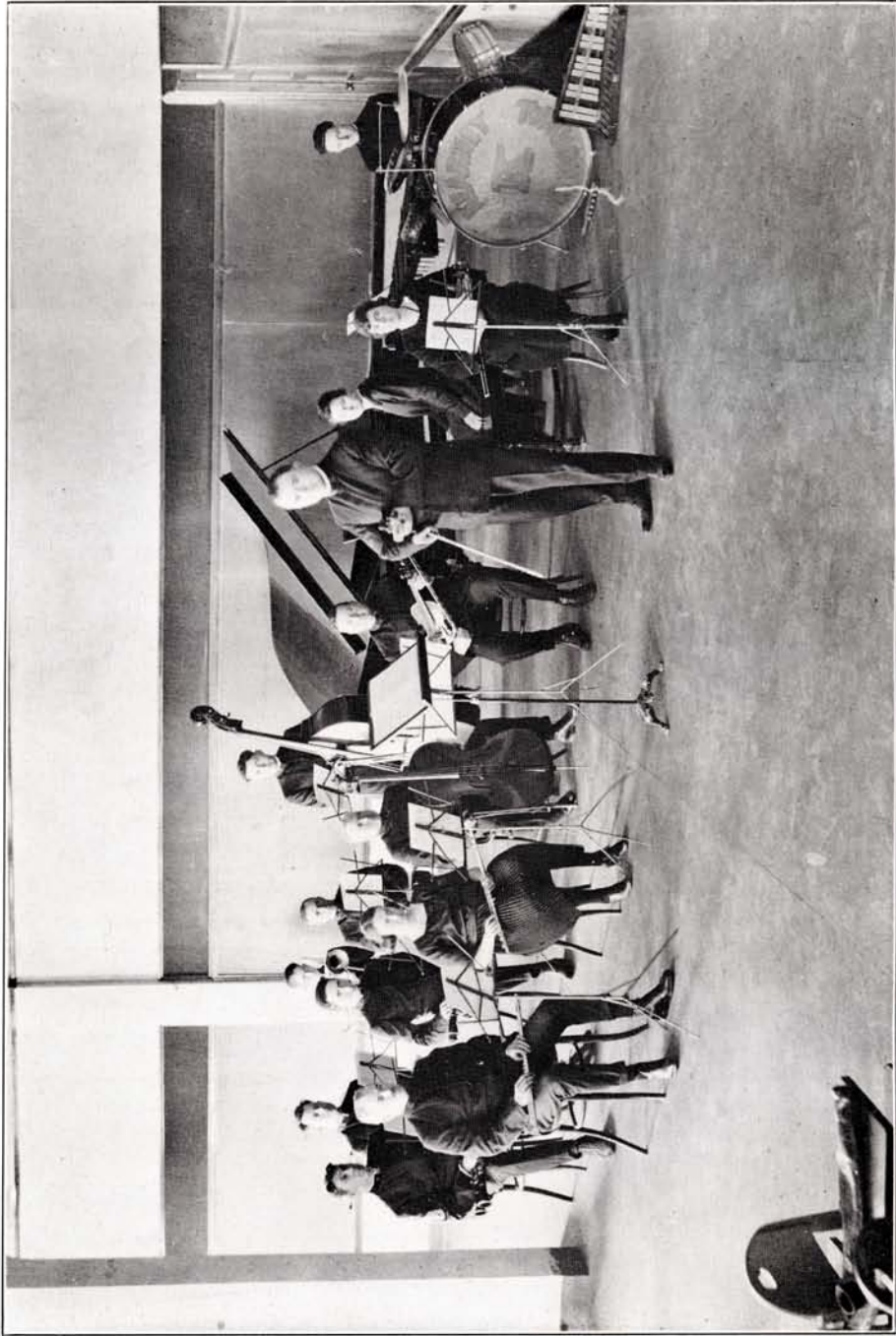
The band gives a splendid concert each year which always provokes favorable comment from critics in school and in the city.

### *The Orchestra.*

Every student of the school has heard of the Normal orchestra before he comes to Kearney. This organization is probably the best known of any of its kind in the middle west. Wherever music is required, whether it be of the highest classical type or the latest in the so-called popular melodies, the school or the city need only call upon Prof. B. H. Patterson and the members of his orchestra and professional service will be rendered.

To Professor Patterson much credit is due for the success of this organization. His efforts to improve and promote orchestra work for the benefit of the school are untiring and are appreciated by the student body and faculty.

BLUE AND GOLD



K. S. N. ORCHESTRA.

1921



## BLUE AND GOLD



GLEE CLUB.

### *Cecilian Glee Club.*

Hester Mallory .....	President
Mabelle Wilkie .....	Secretary-Treasurer
Ruby Bliss .....	Librarian
Margaret Black .....	Accompanist

The Glee Club was organized in 1907 under Miss Bailey and was successfully promoted through the leadership of Mrs. Grace Steadman. The direction was then taken up by Mrs. Margaret Steadman, and Mrs. Grace Steadman is now leader. It is completely organized, having a president, secretary and treasurer, librarian, part leaders and a conductor. The chorus meets twice a week and one credit is given each quarter.

Last year the girls went on a trip, giving concerts, and this year they are making a very extensive trip, putting on a varied program.



MUSIC SUPERVISORS.

### *Music Supervisors Club*

The Music Supervisor's Club was organized in May, 1916, with the definite purpose of establishing a helpful and congenial fellowship among those taking the music supervision course, to help them to study the best music and acquaint themselves with all the happenings of the musical world. It is ready at any time to offer suggestions or materials which might be needed by the graduates of this department in their work.

During good music week the special programs given, and the stress put on good music is under the auspices of the music supervisors club.





CLYDE WILLIAMS, Business Manager.

HERTHA CHRISTOFFERSON, Editor.

### *The Antelope.*

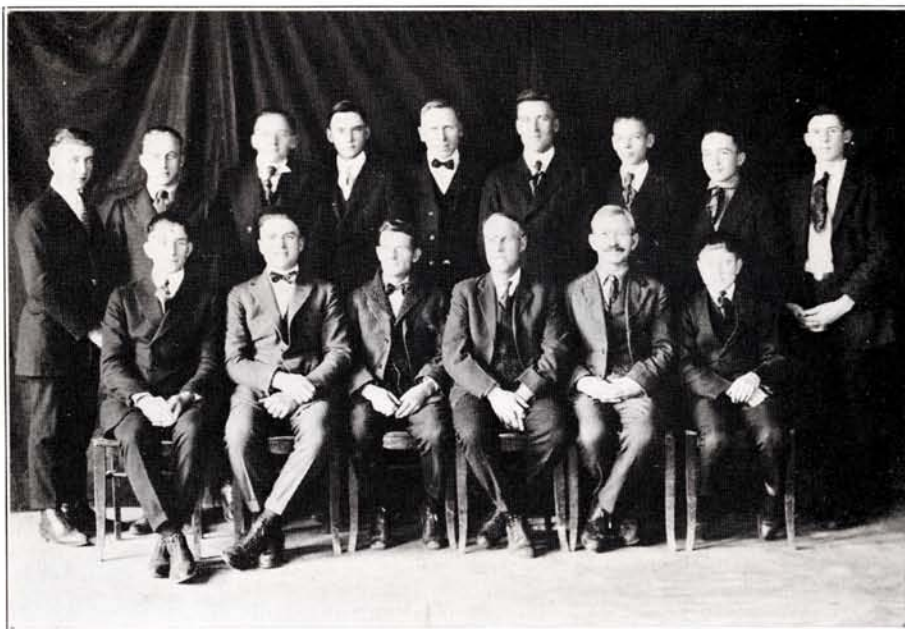
The Antelope, our weekly school publication, was first issued on September 1, 1910, with Lester Chadderton as editor and Lamont Stephens as business manager. At this time it measured eleven by sixteen inches, and existed entirely on advertising and subscriptions. Hence fifty per cent of its space was devoted to advertising.

But the Antelope was even at that date an agile creature. It grew rapidly, keeping pace with the great institution which it sought to represent before the public. Even before the year was over, it had grown to twelve and one half by eighteen inches. For some years it avoided the warm weather, but by nineteen seventeen it had gathered strength sufficient to surmount even this and we had our first summer school issue.

In the summer of 1920, through the establishment of the contingent fee fund, the Antelope was placed on a sound financial basis so that it was possible to cut down advertising space to 33 per cent. We look forward to eliminating it entirely in the near future.

Another vital improvement occurred in September, 1920, when Mr. Alfred Neilson took charge of the paper. Through his efforts it grew from a publication of a purely high school type to a live professional paper. The educational notes, added at this time, have an important part in acquainting Antelope readers with the progress of education.

This, then, is the aim of the Antelope management, not only to acquaint students and alumnae with the affairs of the school, but to place before them, constantly, the high standards and aims of the teaching profession. Thus may the students continue to derive inspiration from the spirit of their Alma Mater.



JANITORS.

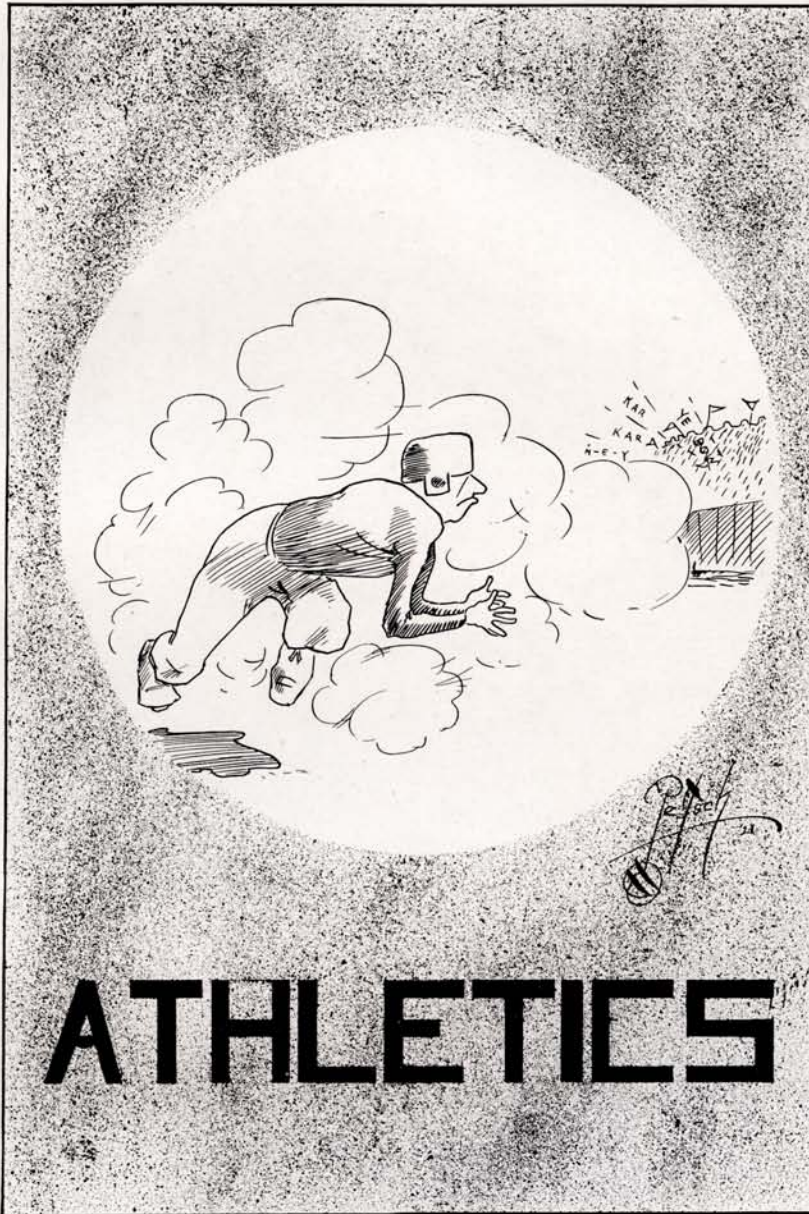
### *The Boys' Janitor Job.*

Work on the janitor force provides a means for young men to pay part, and in many instances the greater part, of school expenses. The jobs are divided into departments. From eight to ten rooms, with some hallway, is a department that ordinarily takes two hours a day to sweep, dust and mop, so from four to six o'clock on each school day is cleaning time. Saturday is the general cleaning day. The boys put in ten hours of work on that day. We have eleven departments. With two working in the library this provides employment for a force of twelve.

Our best boys are the boys who rank highest in class work. It should be the pride of each one to keep his department the best. Our motto is: "Learn to Do the Common Thing Uncommonly Well."



BLUE AND GOLD



1921



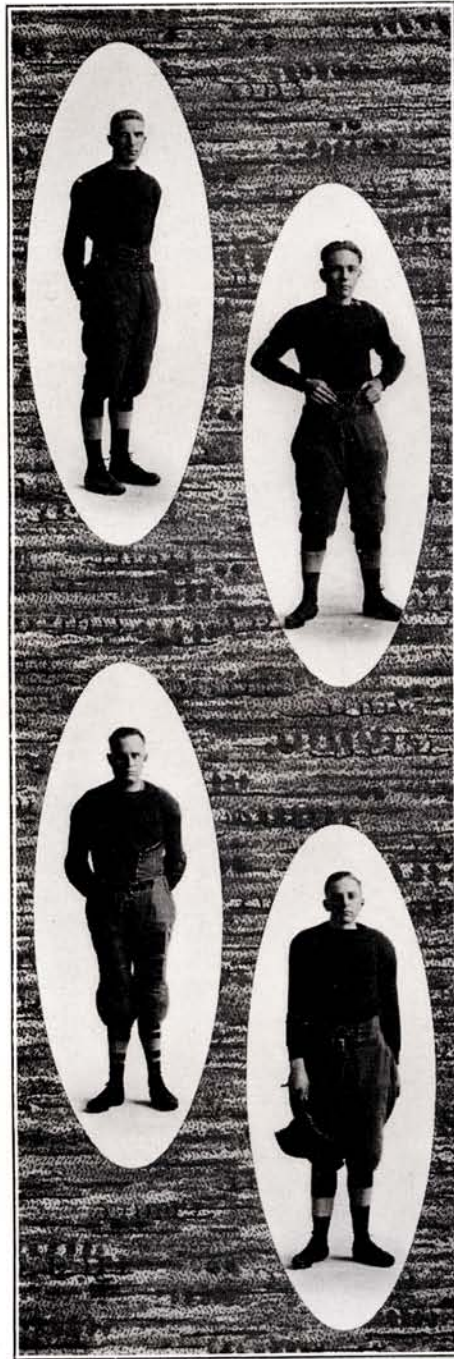
BLUE AND GOLD



1921



## BLUE AND GOLD



FORREST GORIN

Shelton

End

*On account of his speed, Gorin played both end and half back. He filled the positions like a veteran, bringing woe and misery into the camp of the enemy.*

ARTHUR PETSCH

Milford

End

*From his position at end he brought down his man without fail, regardless of size, and was always there to receive a pass.*

W. L. BENEDICT

Spencer

Guard

*Benedict's playing could not be measured by his size. He stopped many a play before it was under way.*

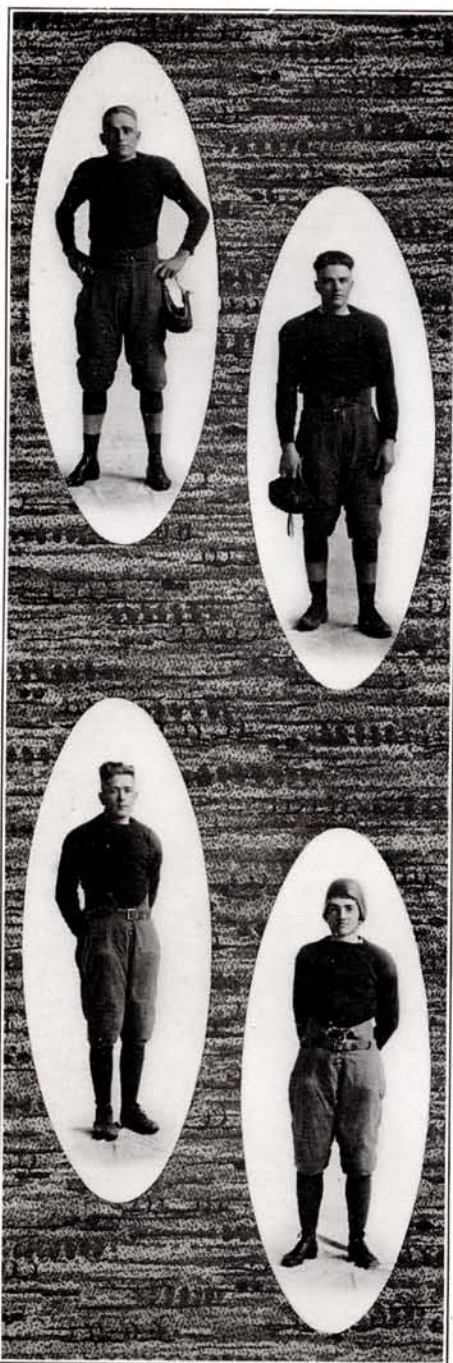
ILA WEEKS

Grand Island

End

*Weeks was sub end and proved to be a hard and willing worker. He was always ready to do his part whether in practice or in a game.*

## BLUE AND GOLD



EARL COCHRANE Stockville

Tackle

*"Buck" is a husky and was not afraid to meet his man. He was stationed at tackle and as such brought the foe to his feet.*

ROLLIE BUNNEY Orleans

Right half

*Bunney was a man good for a gain every time called upon. As a defensive player he showed his mettle in getting his man.*

CHARLES NEALE Stapleton

Center

*At center Neale played a sterling game. He was a stonewall when the opponents directed a play through his position.*

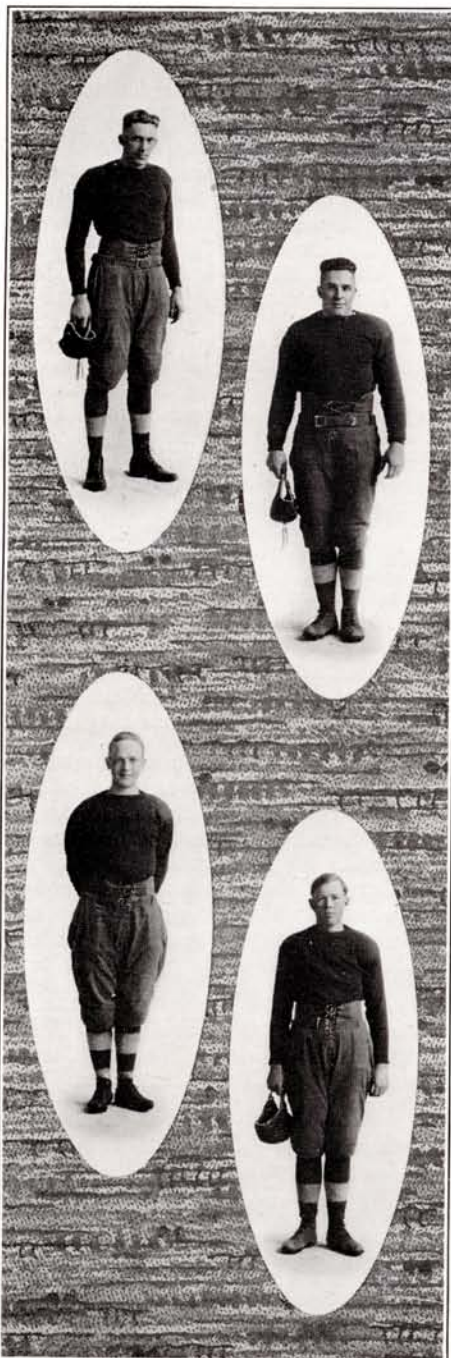
KENNETH NEWCOMB Kearney

Quarterback

*Though a small man, he had the fighting qualities, made many a good gain and directed the plays as well.*



## BLUE AND GOLD



MARTIN NELSON

Kearney

Full back

*He backed up the team in defensive playing. He stuck through thick and thin.*

CLAUDE SMITH

North Platte

Left half

*From his position at half back Smith captained the team. Many a gain was made by his aggressive line plunging.*

ROY LARSON

Axtell

Tackle

*Though this is his first year in football, he displayed the scrap and pep that go to make up a football player.*

RICHARD VEST

Pleasanton

Guard

*Vest was another husky lad who well filled his position as guard. He stopped many a play through the line.*

## 1920 Football

The season opened with bright prospects for K. S. N. and much enthusiasm was shown by the school. Our new coach, Ozmun, succeeding Hugo Otoupalik, was well pleased with the first turnout of twenty-six men. Among these were Albin, Benedict, Calhoun, Cameron, Clinite, Cochrane, Gorin, Keens, Kummer, McVane, May, Nelson, Panek and Reeves. Also some of last year's veterans, as Croft, Newcomb, Petsch, Smith and Vest. Homer Kummer, who played on the local high school eleven was elected captain.

The first game at Central City with Nebraska Central, was hard fought and won by the Kearney team. The second game was lost to York College by the close score of 13 to 0. Capt. Kummer's booting featured, especially when we were in danger.

Then came trouble. Some of the men persisted in disregarding training rules. Coach Ozmun started house-cleaning and the result was that most of our best players were out of the line-up. Misunderstandings resulted and there was created ill-feeling between members of the team and the school.

Gathering up the remnants of his team, Coach Ozmun sent them against Peru. Of course, Peru had supremacy in weight, speed and practice and walked off with all but the morale of our warriors. Our men won the respect of the Peruvians by the dogged way in which they kept fighting when against such mighty odds. Nearly all were more or less crippled, Albin getting a sprained ankle, Bill Reeves breaking his leg while making an end run, Croft having a rib cracked and Petsch getting knocked out. Luckily for us however, the Peru field was void of sand burrs for which we were thankful.

A mighty spirit seemed to rise up inside of old K. S. N. More men volunteered—Bunney, Gharring, Larson, McNeil, Neale and Weeks. Our girls were behind us to their utmost. Pep meetings preceded each game. Claude Smith was chosen captain for the remainder of the season. On November 4, Grand Island invaded and won with a large score, although the local men were in better trim. Kummer's boot again saved us in many tight pinches. On Armistice day, Cotner University played here and also won, carrying off both their and our end of the score. The last game of the season was with Midland College on the local field, Newcomb playing quarterback; Nelson, full; Smith and Bunney, halves. "Speedy" Albin was back in the game much to the rooters' delight.

The following men received letters for the year's work: Paul Albin, W. L. Benedict, Earl Cochrane, Forrest Gorin, Martin Nelson, Kenneth Newcomb, Arthur Petsch, William Reeves, Claude Smith, Richard Vest, Rollie Bunney, and Charles Neale.

Those receiving reserve letters were Roy Larson, Ila Weeks and William McNeil. Martin Nelson was elected as the 1921 football captain.

The men who stayed through the entire season tested 100 per cent. The school may well be proud of its men of the type of Nelson, Smith and Cochrane, the kind who "ride 'em bareback."





### 1921 Basket Ball.

About twenty-two men reported for basketball practice at the beginning of the second quarter of the school year. A hard practice followed and the team made ready to take on the broncos from Hastings College. Forrest Gorin was chosen by the team as it's leader. Gorin was chosen right forward on the All-Nebraska High School team for 1920. The game opened with Gorin and Ross, forwards; Kummer and Cochran, guards; Nelson at center. The opponents piled up eighteen points against our five in the first half, winning the game. But by putting Ross in center, Clinite in forward together with some fine basket shooting, we made a strong comeback in the remaining half, although not quite enough to take the honors.

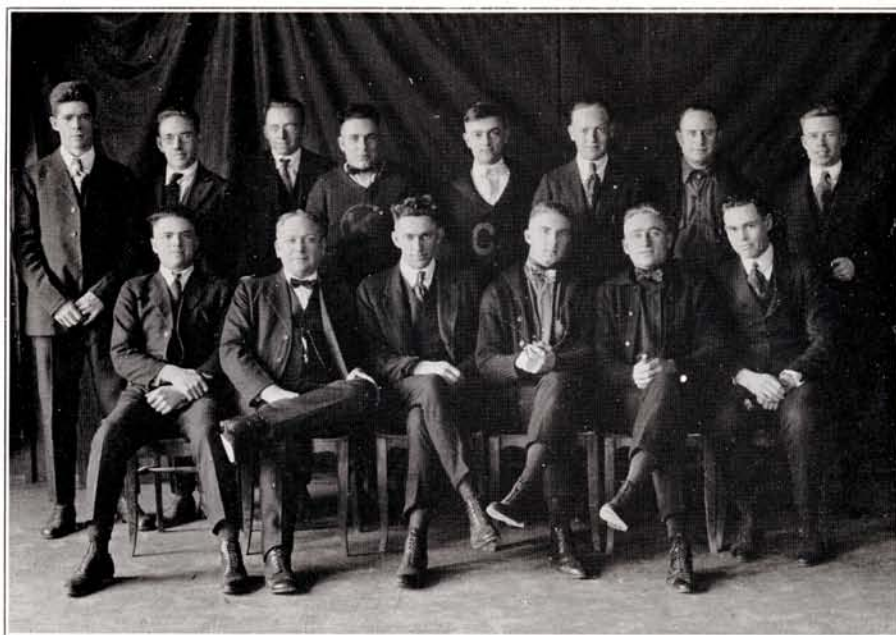
A fast and close game was the third game with Wesleyan. Again the Antelopes came back strong in the second half but the visitors held their lead.

Fast and furious was the game with the quintet from Doane. The men from Crete, however, nosed out a five point margin and won, the gun interrupting a tense period for those watching the fight. No other losing team has given Doane the struggle she had to win this game.

The following evening, Cotner came out on top with an easily won game from the home five, much to the surprise of the fans. The superior brand of playing of the previous night was missing. There was also a lack of the clean athletics displayed at the Doane game. The Midland quintet snatched away the last home game, 30 to 14, on the next Wednesday night.

The regular men are: Gorin (Capt.) and Clinite, forwards; Cochran and Kummer, guards; and Ross, center with reserves as Calhoun, Neale and Godfrey, guards; Cameron and Blowers, forwards; Nelson and Applegate, centers.

## BLUE AND GOLD



### *The K Club*

Forrest Gorin .....	President	Earl O. Cochrane .....	Treasurer
Rollie A. Bunney.....	Vice President	Claude W. Smith .....	Secretary

#### ACTIVE MEMBERS.

Charles Neale	Verne Crosier
Roy Larson	Kenneth Newcomb
Richard Vest	Martin Nelson
W. L. Benedict	Ila Weeks
Roy Croft	Arthur Petsch

#### HONORARY MEMBERS.

R. M. Ozmun, Coach	J. S. Elliott
--------------------	---------------

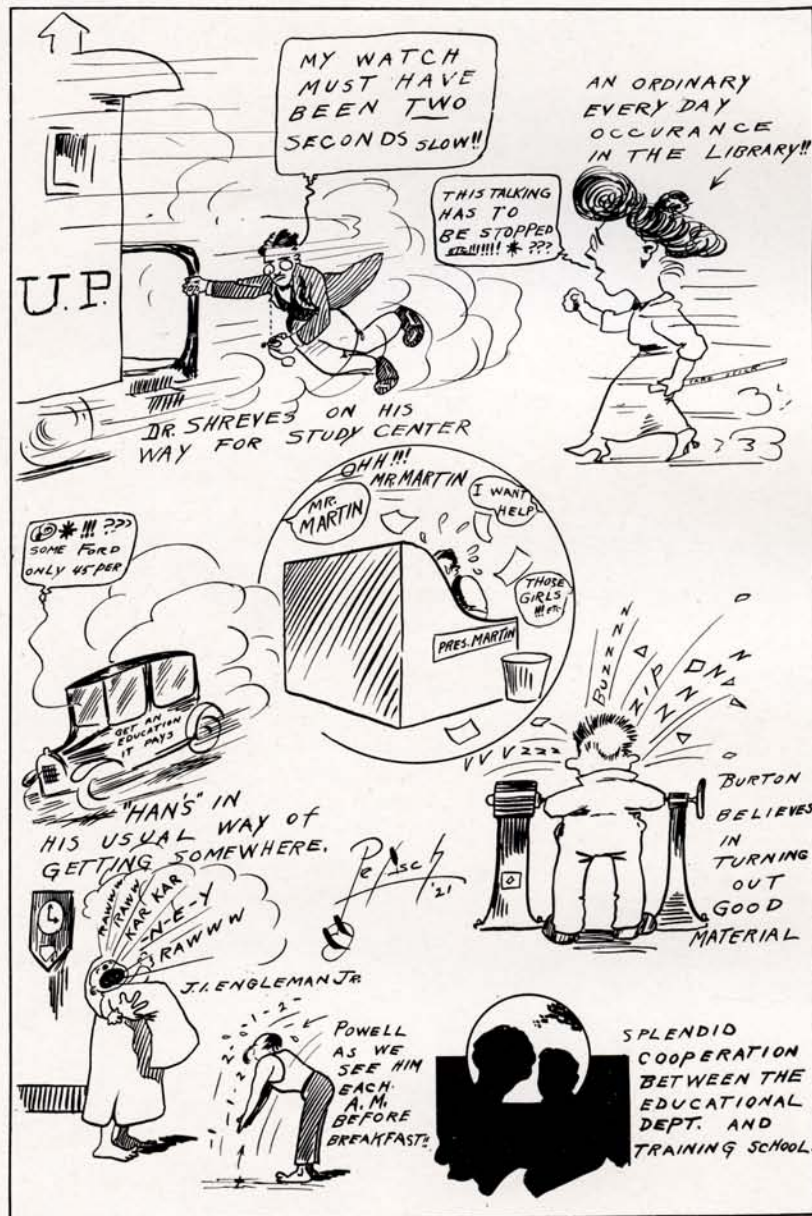
1921



BLUE AND GOLD



1921





## *Vanity Fair.*

### FACULTY.

Most popular teacher—Miss Riggs.  
 Most dignified teacher—Miss Wirt.  
 The brainiest teacher—Mr. Sutton.  
 Most athletic teacher—Mr. Ozmun.  
 Most handsome teacher—Mrs. Stryker.

### STUDENTS.

Most popular girl—Bernice Ashburn.  
 Best looking girl—Kathleen Curry.  
 The brightest girl—Margaret Black.  
 The most conceited girl—Rita Atkins.  
 The funniest girl—Sabina Costelloe.  
 The biggest flirt—Dorothy Cummings.  
 The biggest bluffer—Dorothy Killian.  
 The hardest worker—Miss Shick.  
 The best all around girl—Edith McBride.  
 Most popular man—Arthur Petsch.  
 Most bashful man—Alfred Fisher.  
 Most engaged man—Rollie Bunney.  
 The laziest man—John Cameron.  
 The happiest man—Verne Crosier.

## Calendar of Events.

- Sept. 14—Lawn Mixer by Christian Organizations.  
 Sept. 17—Breakfast, Sophomore-Senior for Freshmen and Juniors.  
 Sept. 24—"Get Acquainted" Party for Girls.  
 Oct. 8—Central City vs. K. S. N.  
 Oct. 8—Met our heroes at train.  
 Oct. 13—Play, "Fine Feathers."  
 Oct. 14—Mr. Cherrington speaks for Y. M. and Y. W.  
 Oct. 22—Wallace Bruce Amsbury.  
 Oct. 23—Y. W. Dinner Party.  
 Oct. 15—Football, York vs. K. S. N.  
 Oct. 20—Resurrection of football team.  
 Oct. 21—To train, saw our boys leave to meet Peru.  
 Oct. 23—Met train; boys back from Peru; Reeves on stretcher.  
 Oct. 26—Miss Riggs gave a political address to all girls meeting.  
 Oct. 27—Seniors-Juniors observe tradition; Junior song and pennant handed down to the 130 "odd Juniors."  
 Oct. 28—Miss Tunnell, student Y. W. secretary addressed the Y. W. girls.  
 Oct. 29—Pep meeting, snake dance and "K." "Daddy Long Legs." Initiation into K. P. C. Initiation into Dramatic club.  
 Oct. 30—Rural Club's Hallowe'en Party.  
 Nov. 1—Current Events by Prof. Anderson. Short talk, C. G. Bliss.  
 Nov. 3—"Pep" meeting.  
 Nov. 4—Football, Grand Island vs. K. S. N.  
 Nov. 5—Faculty attending Institute in Omaha.  
 Nov. 10—Address by Mrs. Esther Stock Kroger.  
 Nov. 11—School Parade. Cotner vs. K. S. N.  
 Nov. 16—Memorial service for Mildred Montross.  
 Nov. 19—K. S. N. vs. Midland College. Chautauqua night.  
 Nov. 24-27—Thanksgiving vacation.  
 Dec. 2—Aspasian-Emanon banquet.  
 Dec. 3—Commencement Exercises.  
 Dec. 6—President Martin speaks on "More Education in General."  
 Dec. 8—Prof. Sutton speaks on "Schools of America."  
 Dec. 9—Senior Class party.  
 Dec. 10—Dr. Yoakam speaks on "Special Function of Teachers College."  
 Dec. 10-11—Dean Wirt gives Tea for all girls in school.  
 Dec. 11—"Apple Tree Girl" in movies.  
 Dec. 13—Oscar Seagle's concert.  
 Dec. 15—Claud Weimer talks on Japan at convocation.  
 Dec. 17—Publish eight page Antelope.

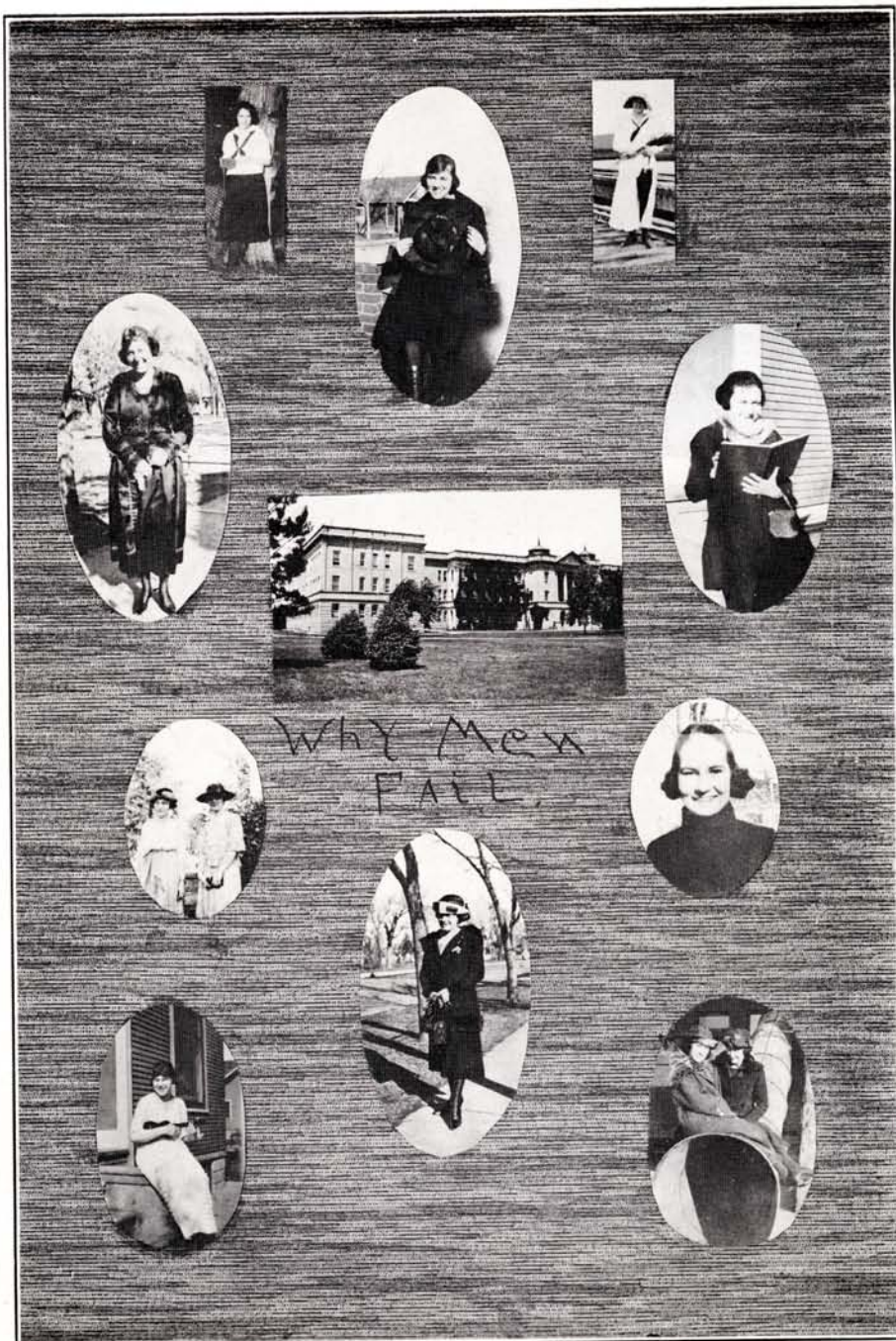


## *Calendar of Events.*

- Dec. 18—Holiday Festival.  
Dec. 19—Prof. Noyer arrives to spend vacation.  
Dec. 24—Death of Alice Meline, a student.  
Jan. 3—Scenes of wild excitement posing for "Annual" pictures.  
Jan. 4—Senior class meet, election of officers.  
Jan. 5—Dr. Hanson speaks on "Child Welfare."  
Jan. 6—Y. W. C. A. Tea.  
Jan. 7—Kearney-Hastings basket ball game.  
Jan. 12—Initiation into Dramatic club.  
Jan. 13—Aspasians celebrate.  
Jan. 14—Exhibit of Manual Training department. Miss Kurth's recital.  
Jan. 15—Junior Class Hard Time Party.  
Jan. 21—Faculty at home for students.  
Jan. 28—Play, "Vision of Homeland."  
Feb. 3—Kearney vs. Doane.  
Feb. 4—Camp Fire girls give "Call of Wohelo."  
Feb. 9—Kearney vs. Midland.  
Feb. 10—Band Concert.  
Feb. 16—Annual goes to print.  
Feb. 19—All-school Washington Birthday party.  
Feb. 23—Annual Staff's dinner.  
March 4—Dramatic club party.  
March 11—Dual debate with Grand Island.  
March 15—Lecture Course.  
March 18—Normal Y. W. C. A. entertains city Y. W. C. A.  
April 1—Orchestra Concert.  
April 8—High School declamatory contest.  
April 9—K. S. N. debate with Hastings University.  
April 16—Junior-Senior Banquet.  
April 29—Dramatic club plays.  
May 6—Student honor banquet.  
May 7—Annual May party.  
May 22—Baccalaureate.  
May 25—Class play.  
May 26—Alumni banquet.  
May 27—Commencement.



BLUE AND GOLD



1921



## Society.

K. S. N. is noted for its peppy mixers. The first week of school one was held on the campus. The leading event was the grand march, led by President Martin and Miss Wirt. The Y. W. C. A., Y. M. C. A. and Catholic Club were sponsors for the affair.

The all-school party of November was in the form of a foot ball game, giving every student and faculty member a chance to become foot ball stars. Mr. Weimer, quarter back, called signals for squad formations. The order of events was determined by printed programs. It wasn't an unusual sight to see some of the faculty members making a touch down. Some of the players almost lost their heads when they were given a chance to make a real touch down with pumpkin pie and "spanked" cream.

Even the gym could hardly hold the crowd and everyone reported a good time.

The Holiday Festival is always one of the unusual attractions of the year and is under the auspices of the Y. W. C. A. This year the festival was held December 18. Students and faculty members were busy all day utilizing their spare time decorating and getting booths ready for the evening.

In spite of the snow the crowd, consisting of K. S. N. students and people from down town, made its way to the "gray storied walls" at five o'clock sharp. One would imagine that his mind had deceived him or his eyes were playing a joke on him when he stepped suddenly into the halls and saw the variety of eats. Of course no one was able to judge his eating capacity on the spur of the moment.

The different organizations each staged attractive side shows. The Orpheum program which followed the side show attractions gave the school a chance to reveal her talented people. The program consisted of wrestling matches, tableaux, kitchen bands, monologues, 'n everything.

The Y. W. C. A. finance committee and Mrs. Sutton, its advisor, deserve much credit for making the evening one of enjoyment.

The reception given to the students by the faculty, January 20, will linger in the memories of K. S. N. students. The gymnasium was decorated in black and white. Potted ferns added beauty to the other decorations.

In the receiving line were President and Mrs. Martin, Mr. and Mrs. Mercer, and Miss Jennings. Mrs. Steadman presided at the coffee table and Mrs. Stryker presided at the tea table while Mrs. Brindley helped everyone to a generous serving of ice cream and dainty cakes.

Every faculty member and student had a word of greeting for some one else.

Mr. Patterson's orchestra added much enjoyment to the afternoon.

The basket ball team from Peru arrived in time to receive a hearty welcome from K. S. N. faculty members and students. The Peru team joined with K. S. N. students in declaring the faculty to be the best of entertainers.

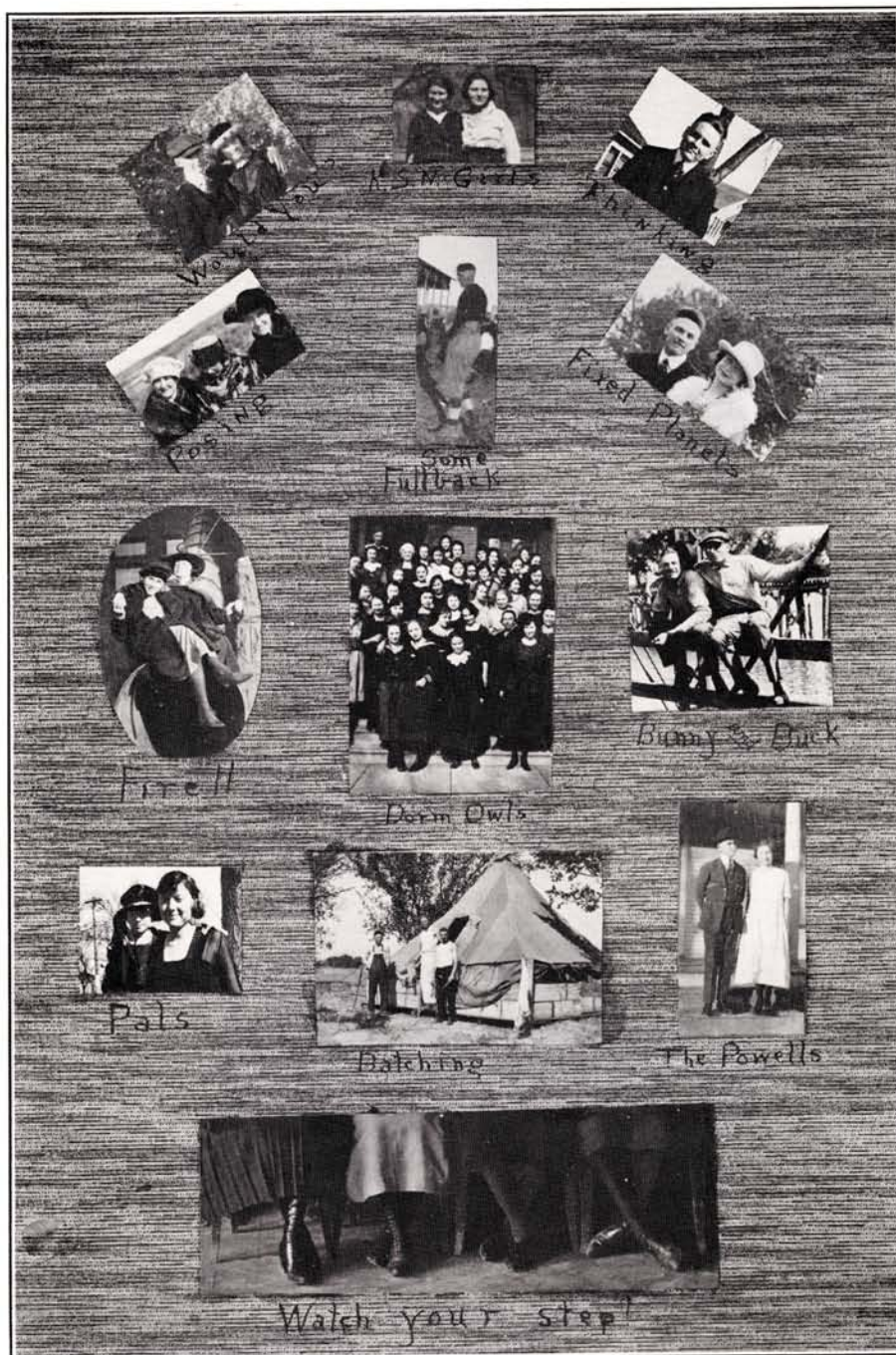
Washington's birthday is celebrated at K. S. N. by an all-school costume party. The party is usually held in the gymnasium a few days before Washington's birthday. This year the party will be held February 19.

The Washington party and the Holiday Festival are always under the auspices of the Y. W. C. A. The party this year will be a costume party just as it has been in previous years. Nearly every one wears a colonial costume similar to the ones that were worn at the time of George Washington.

The decorations, games and menu are always in keeping with the event.



BLUE AND GOLD





## The Ten Commandments.

*And I speak unto you saying:*

I am the Kearney Normal School, the Alma Mater, which has brought thee out of thy mother's care into the painful house of learning.

Thou shalt have no other school before me.

Thou shalt not place in thy sight any ponies for Cicero, nor any solved equations for chemistry, nor any dates for History, nor any answer for any test which thou fearest.

Thou shalt not bring these into the classroom, nor think of these, for I, the School of Schools, have an exacting faculty who visit their wrath upon the wrong-doer, even to cutting a grade; and show kindness unto all those who love them, and "eat up" their courses.

Thou shalt not read aloud a problem in senior arithmetic without a reason for it.

Remember your eight o'clock, to be on time.

Five days shalt thou be in at dusk, and venture not forth.

But the week end is the "date time" of the "Dorm Owls;" then thou shalt not be in until ten bells; thou, nor thy chaperon, nor thy escort, nor thy room mate, nor thy best chum, nor thy sister, nor any girl that is in the dormitory.

For in five days thou pineth, and fretteth, and studieth, and doeth whatever thou can'st; wherefore, thou art glad to see the week-end come, and useth it to advantage.

Cut up the frogs and the worms! that thy days may be short in the room of perpetual odor.

Thou shalt not smoke.

Thou shalt not laugh aloud in the library.

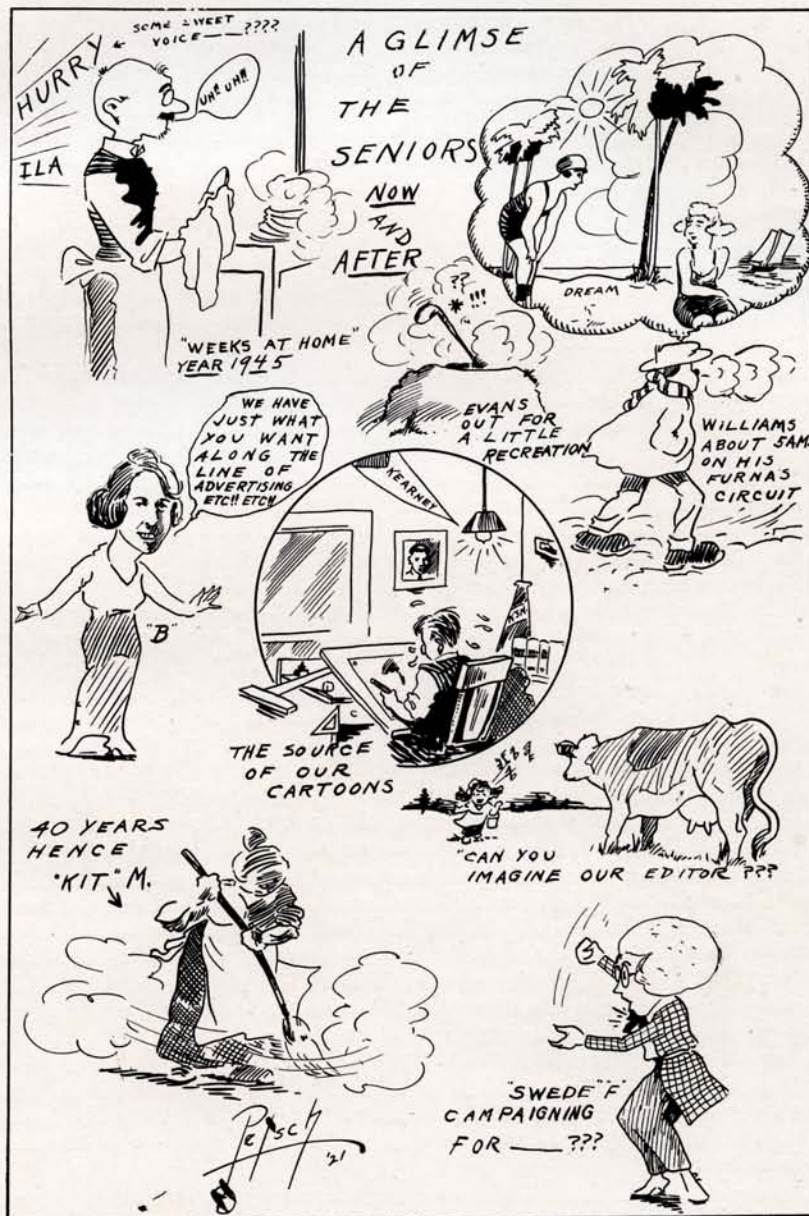
Thou shalt not permit thy thesis to run overdue.

Thou shalt not kill a teacher in thy anger, however just.

Thou shalt not take a course in Hallology and Radiatorology, nor any of the sub-sciences or sub-arts or either of these two; for thou shalt always set a fine example to the students of the training high school—while on the first floor.

<i>Name:</i>	<i>Where they may be found:</i>	<i>Favorite Occupation:</i>	<i>Ambition:</i>
Juanita C.	Lower hall	Writing theses (?)	To be able to cook
Clara S.	By the fountain	Hunting people	To cook "cookies"
Mary L.	Library	Talking to Croft	To teach one
Glasner	Wandering around	Dodging girls	To be able to flirt properly
Bee A.	Mr. Pate's office	Doing good (?)	To kid "Weimer"
Petsch	Post office	Reading letters	To be in North Platte
Florence Bruce	Following Bee	Proof reading	To find a tall man
Esther Smith	With Florence Bruce	Changing position of diamond	To keep diamond
Edith McBride	Flirting at candy table	Debating	To beat Wesleyan
Caryle W.	By radiators on first floor	Dancing	To teach a Caledonian to dance
Cochrane	On Amy's trail	Walking with Amy	To grow old
Weimer	At home after eight o'clock	Looking for (?)	To find her
Vivian M.	Always with Esther J.	Kidding around	To kid the faculty
Kummer	Gym	Looking wise	To grow popular
Gorin	At dorm	Waiting for Friday night	To stop dorm clock
Velma R.	By the window	Watching for mail carrier	To hear from Lincoln
Lucile F.	On the stairs	Doing nothing	To go west







## Scandal Sheet.

"There are scores and scores of scandals  
That we hear of day by day;  
And we've gathered here the mildest,  
Of the ones that came our way."—C. W.

You can't imagine what happened one Sunday night when Ethel Garrison was out car riding—with whom we wouldn't dare say. A little mouse in the corner overheard Ethel say: "There are only two things in life I want, a little home and you, Brown-eyes."

One of the most horrible rumors of the year, which has reached us, is to the effect that Dr. Stoutemyer and Miss Scott have quarreled. Although complete details are lacking, as usual, we understand that each party is determined not to concede a thing to the other, also as usual. The situation is very serious but we sincerely hope that the sky will get clearer in the future.

And do you know, Miss Smith nearly lost Pete? Some very fierce negroes stole down by her house and, evidently thinking him a chicken, took Pete away. But, to his mistress' great joy he was returned after the Caledonian act in the Holiday Festival.

Oh! but we heard a great joke on Petsch. He started out to fool some one else, but where! where did it land? Right on his own head. He called up at the dorm one night and asked Marguerite Martin and Roxy Erb to call up 106. Thought the girls weren't clever enough to use the telephone book, but they were and they did and found that 106 is the police station.

Do you remember when Vinnie Shawkey had the chicken pox? Weeks went around the Normal with such a worried look. You see, he was deathly afraid he'd get it. We'll wager he crammed the box for quarantine letters full every time it was emptied.

And say! You know Mabel Miller sat right down in front, the night of "The Vision of the Homeland." We wondered and wondered and scratched our heads about it and here is the conclusion at which we finally arrived. It was so that she'd catch every word that fell from Cumming's lips.

But here's the best one yet. Fisher, (you know him), took two girls to "The Vision of the Homeland." When he came to the door, the one who took tickets hesitated. "Because," she said, "the show was only put on to bring one girl to."

Listen to this one. Emerson Baker went around school for quite a while with big patches all over his face. Poor boy, he looked awful. Said he ran into a post on third floor, but about that time we noticed that Ruth and he were rather cool toward each other, so we have our own ideas about how the patches really came to be on his face.

Otis H. Gharring, alias, "Science Pete," has done something very wonderful. He has developed a new science of courting. On Sunday night he appeared at church with a certain girl, but always on week nights he was seen with another fair maid. The idea is to change off so that neither will get too sleepy. See?

If you want to have some real fun, go up to the second floor of the Normal building, turn to the east at the center of the corridor and ask Mr. Elliott when he intends to go to California. You'll see some rare blushes. You know he expects to bring back a bride from there.

A couple of weeks before Christmas a very charming young personage was seen in the library. Very few girls knew who she was but trust the boys, especially Claud Weimer, to find out. It surely was love at first sight, for two months afterward he still remembered her name.



## Senior Advice to the Juniors.

It is the privilege of the senior to give advice; it is equally the privilege of the junior, after listening respectfully, to disregard it.

Oh Junior, set high your ideals, for your best is none too good for our old K. S. N. The seniors of '21 have served her to the best of their abilities. Perhaps it is not too much to say they have served her well. Your ideals must be set high, as were theirs, if you wish to reach, as they have reached, the place where one feels life before him, and is anxious to live it.

Keep alive the precious loyalty to the school; cheer whether the game is a losing or a winning one. This spirit already thrives in the dear old school; do not let it weaken or die. Make it live and spread, until when there returns to the beloved halls, a senior of '21, he may be glad to see that the school is even better than when he knew it. Make him realize that the school cannot stand still any more than it can slide backward. It must always move onward and upward.

K. S. N., too, has ideals and her ideals and those of her students are very similar. They are lofty, and they inspire the individual to better things.

We, the seniors of '21, leave in your hands, juniors, something very near and dear to us. With regret, and longing, we leave the school where we have passed so many busy happy weeks. With enthusiasm and ambition we go forth to conquer worlds. We ask you, juniors, as a last request, be loyal to the school which we have learned to admire, respect and love—K. S. N.

Yes folks,—here is a poem (modified),  
And it's about a poetic class (dignified),  
There are many styles of us (classified),  
Clever—sweet—smiling—beautiful (rarified),  
All attending K. S. N. *satisfied*.

### THE STUDENT'S BOAST

Wellers  
patE  
  
Stryker  
sUtton  
wiRt  
shrevEs  
  
crawFord  
Ozmun  
Olsen  
diLley  
jEnnings  
luDden  
  
'Elliott  
Martin

### CAN YOU IMAGINE—?

Alice without Bunney?  
Amy without Buck?  
Vivian M. without Esther J.?  
Mary without Croft?  
Delia Garrett flunking?  
Charles Glasner dating?  
The Caledonians ever learning to  
dance?  
A Phi Tau being nice to everybody?  
A Juanita and Sigma on speaking  
terms?  
Miss Ludden having mercy for me, a  
zoology student?  
Mrs. Stryker not smiling?  
Dr. Stoutemyer without Miss Scott?  
Edith M. not flirting?  
Anyone enjoying a dorm breakfast?  
The Annual Staff having an inspira-  
tion?

BLUE AND GOLD



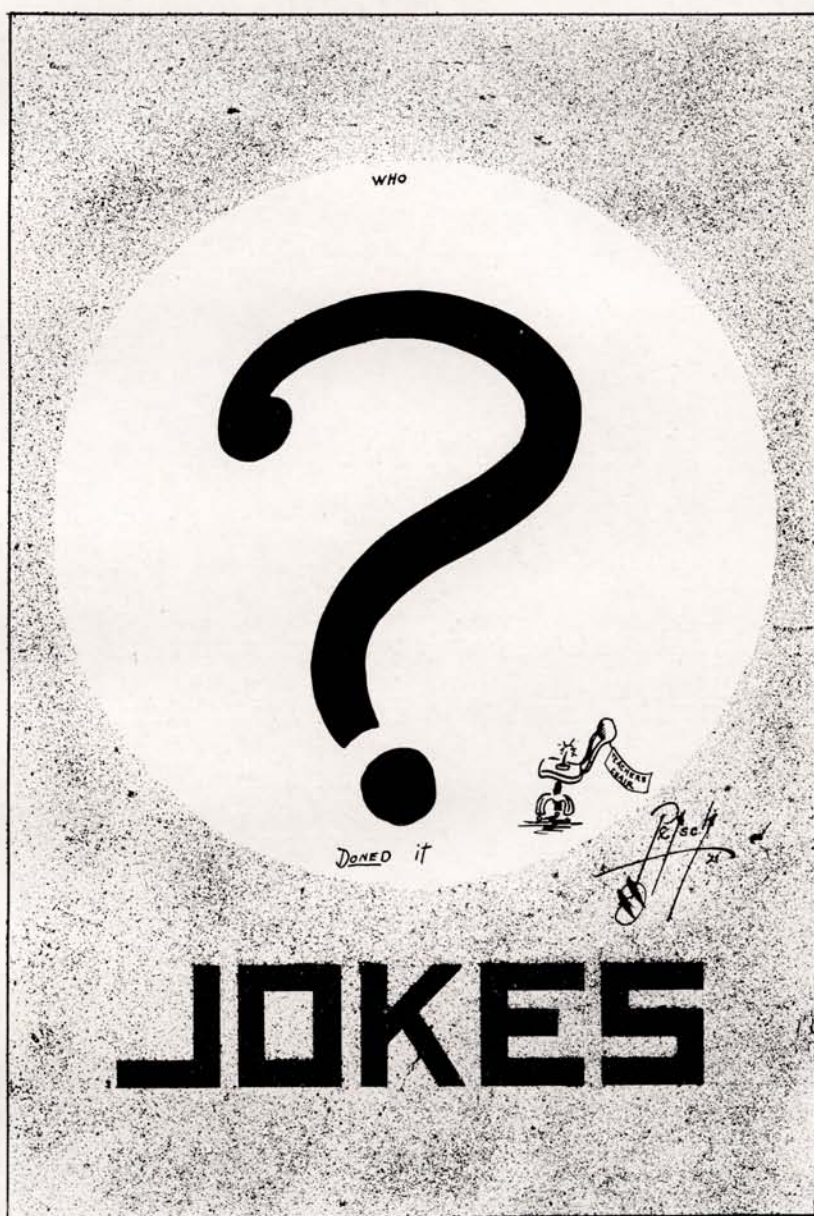
JUNIOR-SENIOR BANQUET 1920.



MANUAL TRAINING EXHIBIT.



BLUE AND GOLD



1921

BLUE AND GOLD

The "Old Reliable"  
City National Bank  
OF  
Kearney, Nebraska

is always ready and willing to serve the  
Faculty and Students of the Kearney  
State Normal as well as their friends  
while they are in Kearney or where ever  
they may be. This is a bank of service.

DAN MORRIS, President

FRANK TURNER, Cashier

GEO. BURGERT, Vice President

ELMER R. GILLESPIE, Ass't Cashier

BERNARD FOUTCH, Ass't Cashier

1921



## BLUE AND GOLD

*Real good jokes are very few, so don't get mad  
if the joke is on you.*

Overheard in Manual Training:

Larson—"What are you making Bunney?"

Bunney—"Oh! a plaything."

Glasner—"You are starting in rather early aren't you?"

Elmer Cook—"Say officer, I can't find the corner."

Officer—"You are standing on it."

Elmer Cook—"No wonder I couldn't see it."

I take thee, dearest Margarine,  
For butter or for worse.

Miss Kurth—"Today we will have individual sight singing. Please don't forget to observe your rests. Susie will you take the first score?"

Susie sang several notes and then stopped.

Miss Kurth—"Well, why don't you go on?"

Susie—"I am resting."

Prof.—"What courses are you taking?"

She—"I came here to take mathematics, literature and history."

Prof.—"I'm glad to have an understanding. I had an idea you thought you were taking a course in hallology and flirting."

Kathryn Martin, in practice teaching—"I can't find the end of this string."

Bright Pupil—"It must be cut off."

**T**HE time to begin  
accumulating an  
estate is when you  
first begin to earn money  
for yourself.

\*

Think it over, then come  
in and open a  
**SAVINGS ACCOUNT**  
with us

\*

**CENTRAL  
NATIONAL BANK**

KEARNEY, NEBR.

## The Six I's

\*

Intelligence  
Inspiration  
Initiative  
Integrity  
Intensity  
Industry

Lead On To Success

\*

**FARMERS STATE BANK**

Kearney, Nebr.

## BLUE AND GOLD

He—"I am going to get ahead."

She—"Good decision, you need one."

Sounds travel at the rate of about 400 yards per second.

Exceptions to rule.

Scandal 1000 yards.

Truth  $2\frac{1}{2}$  yards.

Teacher's questions 400 yards.

Pupils' answer!!!

"What's the matter?"

"I followed Mrs. Steadman up to high C and fell off."

Laugh and the world laughs with you.

Laugh and you laugh alone.

The first is when the joke is the professor's,

The second, when it's your own.

First Student—"Did you hear that Weimer found a quarter in his fried potatoes the other evening?"

Second Student—"No! How did it get there?"

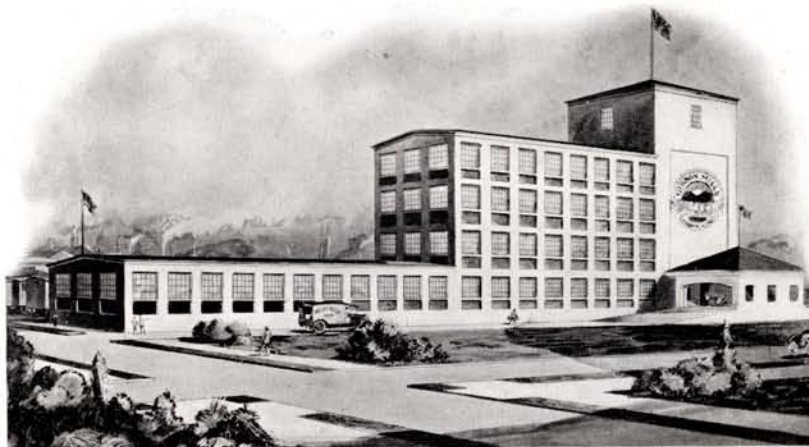
First Student—"Mr. Saunders heard that Weimer was complaining that there was not enough change in the meals."

Mr. Sutton—"What produces an electric spark?"

Mrs. Smith—"When two objects rub together, the friction produces sparks."

Mr. Sutton—"Indeed? What kind of sparks would be produced if you and I rub our hands together?"

## THE NEW HOME OF SUNBEAM FLOUR



An Exceptionally Fine Plant Producing Exceptionally Good Flour.

FOR SALE BY LEADING GROCERS

### THE GIBBON ROLLER MILLS

GIBBON, NEBRASKA

1921



## The Personal Service You Receive From New York City

In the first years of our business, we went into the New York Market twice each year to buy merchandise for Spring and Fall seasons. At best, such a method is only partly satisfactory. Our determination to render constant, up-to-the minute service to our patrons made it necessary to open permanent, all-year-round office in New York City in the very heart of the eastern market.

Our New York City office is at 370 Seventh Avenue, and occupies four floors of the new Penn Terminal Building. There we have an adequate number of thoroughly experienced buyers of merchandise. Those men know all the sources of supply in the lines we sell, namely: Dry Goods, Shoes, Ready-to-Wear, Clothing and Furnishings for men, women and children. They also know the local requirements of each town, because our local manager is an important counsellor to our New York staff and it is on his judgment that we rely greatly for authentic information as to what we must buy to meet your requirements.

You have every right to feel confident that the merchandise in all our stores is up-to-the minute in newness; thoroughly good as to quality.

Because of the tremendous amount of merchandise we sell in our Three Hundred and Twelve Stores, our purchase price is bed-rock low. Our operating cost is very small. We in turn sell to you at such tiny profits that you are assured utmost economy. It is sheer extravagance to pay higher prices than we ask of you.

Therefore: For very good and sufficient reasons—it will pay you in many ways to buy constantly from a J. C. Penney Co. Store.

### J. C. Penney Co., Inc.

KEARNEY, NEBRASKA

*Buying Offices Also in St. Louis and St. Paul*

## BLUE AND GOLD

### BOOST YOUR SCHOOL.

If you think your school the best  
 Tell 'em so.  
 If you'd have it lead the rest  
 Help it grow.  
 When there's anything to do  
 Let the others count on you.  
 You'll feel bully when its thru  
 Don't you know.  
 If you're used to giving knocks  
 Change your style,  
 Throw bouquets instead of rocks  
 For awhile.  
 Let the other person roast  
 Shun him as you would a ghost.  
 Meet his hammer with a boast  
 And smile.

—Ex.

Brains are something possessed by all but used by few.

Mr. Sutton (in applied science)—“Why does a chicken lift its head to swallow water while a horse does not?”

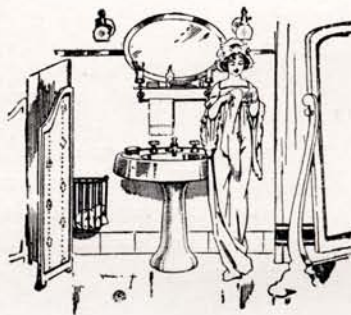
Miss O'Mally—“I don't know, maybe a chicken hasn't a tongue.”

Mr. Sutton—“It wouldn't be much fun to be a chicken would it?”

Miss Ludden was heard to say—“I don't have any trouble with my eyes—as far as reading is concerned.”

Ask  
 Any  
 Ouija Board  
 Where you  
 Can get  
 The finest  
 Wall paper  
 In Kearney  
 And  
 Without a doubt  
 It'll say  
 T-H-A-T-'S  
 E-A-S-Y  
 Just Drop  
 In at our store

Wall Paper  
 Paints  
 Oils  
 Lead  
 Window glass  
 Wind shields  
 Painting supplies.



**Plumbing & Heating Engineers**

\* \*

**KEARNEY  
 PLUMBING & HEATING  
 COMPANY**

**E. A. ECK**

2215 Central Avenue

KEARNEY, NEBR. PHONE NO 736



**W.F. Downing**

**GROCERIES**



*"Good Things to Eat"*



2106 Central Avenue

Telephone No. 5

**Fine Furniture**

**Rugs**

**TRUNKS AND BAGS**



**F.C. Scott & Son**

**2006 Central Ave.**

**C. F. Bodinson**

**Hardware Co.**

**(The Winchester Store)**



**HEADQUARTERS FOR  
SPORTING GOODS**



**Phone No. 9**

**Patterson & Co.**



***Farm Implements***

***Field Seeds***

***Farm Tractors***

***Motor Trucks***



Prompt Repair and Efficient Expert  
Service Part of Every Sale.

***Kearney, Nebr.***

Rats belong to the family of rodents and the Ford to the family of road ants.

Absence makes the marks grow rounder.

Johnny—"Say, paw, I can't get these 'rithmetic examples. Teacher said something about finding the greatest common divisor."

Paw (in disgust)—"Great Scott! Haven't they found that thing yet? Why, they were hunting for it when I was a boy."

"When the judge ruled that Jones had to pay alimony how did he feel about it?"

"Chagrined."

"How did his wife feel about it?"

"She grinned."

"And now, gentlemen," piped the orator, "I just wish to tax your memory."

"Good heavens!" exclaimed a person in the audience, "has it come to that?"

In Home Economics Class:

Esther Smith—"Don't you find reading a cook book mighty stupid?"

Clara Stephen—"Oh! it has a good many stirring passages."

Will we ever forget the time when Claud Weimer reminded the seniors there were 130 odd juniors enrolled?

Prof. Pate—"Don't you find it hard to meet expenses these days?"

Prof. Hale—"Hard? Man alive! I meet expenses at every turn."

You can push a pen but a pencil must be lead.

## Buying the Best and Knowing It

When you buy goods at the EMPIRE STORE you can feel absolutely certain that you have done your best for QUALITY, your pocketbook and your lasting satisfaction.

*We Follow the Market On Readjustments of Prices*

**Give Us a Visit and Inspect Our Line of Dry Goods, Cloaks, Suits,  
and Ready-to-Wear, Also Millinery.**

We Allow Our Values to Do the Talking  
And Your Judgment to Do the Buying

## The Empire Store

*Kearney, Nebraska*

*John W. Pickens*



BLUE AND GOLD

# Federal CAFETERIA

East is East  
and  
West is West  
But you'll agree  
our food the best.



We Enjoy Serving  
Normal Students

*Federal*

CAFETERIA

2016 Central Avenue

KEARNEY, NEBRASKA

1921

"Do you know Fat Burns?"

"No."

"Well, it does."

That little comma. Work, everybody! Work everybody!

Prof. Phillips (coaching "The Call of the Wohelo")—"You ought to have one of those little looking glasses. The kind girls always carry."

Vera Roland—"Why, I haven't one. I never carry them."

Prof. Phillips—"Well here's one," and he pulled one out of his pocket.

A cyclone is a big breeze always in a hurry.

Laugh up your sleeve, it is the shortest route to your funny bone.

He (noticing some yarn flowers on her coat)—"Why have you that bunch of rags pinned on you?"

She—"Oh, that is the style now."

Mr. Stoutemyer—"You people are so thoroughly unprepared it might seem that you had been knocked out in a game."

Illa Weeks (a Zoology student)—"I went into a cyst."

Roxana E.—"I didn't know that "Science Pete" was interested in real estate, but I hear he has a lot."

Gorin—"No, but he has a girl and the thinks that's a lot."

Esther Smith—"How many hours are you carrying?"

Florence Bruce—"None. I am carrying the Annual and dragging 18 hours."

## Twidale Shoe Company

*Shoes - Hosiery - Repairing*

*Try Us On Mail Orders*

**OUR STOCK THE LARGEST IN THIS SECTION**

*Our Prices and Service Is Sure to Please*



BLUE AND GOLD

USE  
Red  
Moon  
Products

AND

Be Satisfied



KEARNEY FLOUR  
MILLS

Grover Haring — "I am trying to sell some stereoscopic views to make a living, will you help me out?"

Busy Woman — "I certainly will if you don't go of your own accord."

She — "John, wake up. What's that noise down in the library?"

He — "Oh, never mind. Probably it's only history repeating itself."



**\$50.00**

For the professional and business man, for home and road writing it has no equal. Light, Strong, Durable, Portable. Let us furnish you a list of business and professional men of Kearney who use the Corona.

**VAN MILLER, Agent**

Room 10, City National  
Bank Bldg.

Kearney, Nebr.

Res. Phone L372 Office 211

*Dependable Coal*

*Dependable Service*

**Sure We Have the Coal You Want**

Rock Springs  
Maitland  
Bear River

Kemmerer  
Peerless  
Weir City

King  
Elkhorn Coke  
Cannon City

*Both Eastern and Western Anthracites*

**We Have a Large Stock of the Above Coal On Hand in All Sizes**

*Phone Us Your Next Order*

**W. L. Stickel Lumber Company**

**Phone 66**

**Kearney, Nebr.**

1921

## BLUE AND GOLD

Weimer—"Got a minute to spare?"

Swede—"Yes."

Weimer—"Tell me *all* you know."

Father—"No, my son, I don't know the Latin for people."

Johnny—"Pop-u-li."

Mother—"Johnny! how dare you accuse your father of lying?"—Boston Transcript.

"If money talks, it doesn't give itself away."

College-bred may mean a four year old loaf, but one must have the dough.

Mary L.—"Do you know any jokes?"

Charles B.—"Who, Emmy Jones?"

"What's home without a mother?"

"An incubator, I guess."

Miss Crawford was reading poetry in English.

Jenny kissed me on the cheek

With her lips as soft as satin—

She looked up—"I don't like that. Do you? I think that's getting entirely too personal!"

Clara Stephens went home one night with her skates on her arm. Clarence Evans was sitting in her favorite chair, but he got up and politely offered it to her. Clara wearily answered, "No, don't get up, I've been skating and I'm tired of sitting down."

## You Want the Best Kodak Work

*We Do the Best*

All Who Have Tried Us Know It

### PRICE LIST

#### Developing

Roll Film, any size, each .....	10c
Packs, any size .....	25c
Plates .....	10c

#### Printing

2½ x 2½ or smaller .....	3c
2½ x 3¼ .....	4c
3¼ x 3¼ .....	4c
2½ x 4½ .....	5c
3¼ x 4¼ .....	5c
2½ x 4¾ .....	6c
3¼ x 5½ .....	6c
5x7 .....	10c
Postals .....	6c

*All prints finished  
glossy unless other-  
wise ordered.*

*24 hour service;  
Out of town mail  
orders solicited.*

Prices on Enlargements Reasonable

## Midwest Kodak Shop

Over Gildner's

Kearney, Nebr.



**NORMAL STUDENTS**  
**Always Welcome At This Store**

*Come In and See Us*

We Have a Special Proposition For All  
Normal Students

LET US TELL YOU ABOUT IT

\* \*

*We Carry a Full Line of Normal  
Supplies*

*New Fountain Annex Room  
New Ladies Writing and Reading Room  
A Place to Check Your Packages  
A Place to Cash Your Checks*

\* \*

Let Us Serve You a Dainty Lunch  
*Fountain Always Open*

**HUTTON DRUG COMPANY**

**Fancy  
Stationery**

\* \*

*Whitings, Cranes and  
Wynne's Linens*

Try Our Pound Paper and Envelopes  
to Match.

\* \*

**The Book Store**

*The Store of Moderate Prices*

**Music**  
**Headquarters**  
FOR  
**Normal Students**

**Sheet Music**  
**Victrolas**  
**Pianos**

\* \*

Something Special  
Every Day



**Olson-Johnson  
Clothing Co.**



*"The Sign of Good Values"*

***In the past***  
***At the present***  
***In the future***

It takes all kinds of people to unmake the world.

Mary Mae Holmes (while dissecting a frog in Zoology)—Oh! I pulled off my left leg."

Where Had She Been?

One clear moonlight night Ethelyn Berger met Miss Crawford who greeted her with a pleasant, "Good morning."

"They say that Paderewski has very fascinating manners."

"Yeah. One of those magnetic poles I suppose."

Article X.

Little Sarah, daughter of staunch Republicans, was being sent to bed early because of naughtiness, and was determined to retaliate upon her aunt.

"Oh, Lord," she prayed fervently, "please bless mamma and daddy and Uncle Henry." Then she added, "and Aunt Mary with reservations."

**When  
You are  
Sick, Hurt  
or  
Quarantined**



Send for free booklet which explains T. C. U. protection in detail and shows you what hundreds of teachers all over the country think of it.

Mrs. Leah B. Griffin, Colfax, Wash., Feb. 11, 1919.—"I wish to thank you for your generous settlement of my claim for illness. I do not see how any one depending upon a salary can afford to be without your insurance. With the present high cost of living they cannot save up for the 'rainy day.' That is the time that the T. C. U. steps in and helps to meet those terrible dragons—Bills."

**T.C.U.  
Will Help  
Pay the  
Bills**

**Teachers Casualty Underwriters**

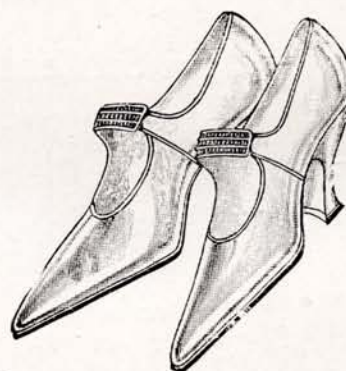
12 T. C. U. Bldg., Lincoln, Nebr.

## New Spring Footwear

**You will be delighted with the extensive assortment of spring models we have to offer.**

**You will also be surprised at the range of prices this season.**

**Buy your next pair at the Empire.**



## EMPIRE SHOE STORE



BLUE AND GOLD



*Let us make your picture.  
With us, photography is art.  
We strive for personality in  
our portraiture, and for that  
reason we usually produce  
even more than a perfect like-  
ness.*

*"Producers of Blue and Gold photographs"*

*"Let me snapshot you, please," said Pete,  
"You look just sweet enough to eat."  
"And is that why," asked pretty Kate,  
"You wish to get me on a plate?"*

1921

The  
Kearney Laundry  
and  
Dry Cleaning  
Works

\*\*

**Dry Cleaning**

Is Not a Luxury, It's An Every Day  
Necessity.

*Parcel Post Us Your Packages As  
They Are Given the Same At-  
tention As If You Lived  
Right in Kearney.*

We Pay Return Charges

15-17 West 23rd  
Kearney, Nebraska

**"SCRATCH 'EM COWBOY."**

It happened in the basket ball  
game with Wesleyan. "Buck" Coch-  
rane was doing some strenuous guard-  
ing, and had his long arms wrapped  
around a Wesleyan player, trying his  
best to get his hands on the ball.

The Wesleyan player, thinking it  
clever, said, "Say, guy, don't you  
want a saddle?"

To this bright remark "Buck" re-  
plied, "No, kid, I can ride 'em bare-  
back."

C. A. Hazlett  
JEWELRY STORE

†

**Headquarters For All School  
Emblems**

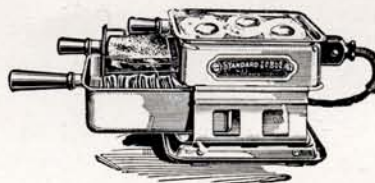
*Let Us Help You Select Your  
Fountain Pen or Ever-Sharp  
Pencil.*

†

Our Optometrist will take care of  
your eye troubles under the same  
guarantee that has made over 5,000  
satisfied customers.

The  
Armstrong  
Table Stove

*Cooks Three Things at Once  
For Light House Keeping*



Your Service Company

**Central Power Company**

Kearney - - Nebraska

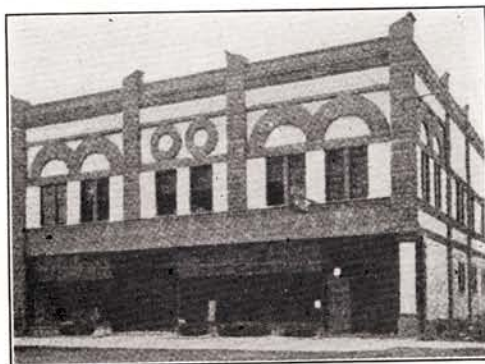


BLUE AND GOLD

# The Kearney Hub, Inc.

PRODUCERS OF

*Fine Printing and  
Bookbinding*



We Need Say Nothing About Our Work—We Put Our  
Imprint on Each Job As It Comes Out of Our  
Shop—It Then Has to Speak for Itself.

*We Submit the Blue and Gold As a Hub Production*

Anything In Printing or Binding

# The Kearney Hub, Inc.

1921

BLUE AND GOLD

**DR. J. BENNETT**  
*Physician and Surgeon*



*Office at Residence*  
203 W. 22d Street

*Phone 108*  
Kearney, Nebr.

*Office Phone 158; Res. Phone 331*

**DR. H. P. IRWIN**  
*Osteopathic*  
*Physician and Surgeon*



Farmers State Bank Building  
Kearney, Nebr.

**L. D. MARTIN**

PHONE 70

**LUMBER**

**COAL**

1921



**DR. RICHARD SULLIVAN**  
*Osteopathic Physician*

§ §

Office Phone 162; Home Phone 88  
Office Rooms 7, 8 and 9 Over  
Twidale's Shoe Store



Kearney, Nebraska

**DR. C. L. AYERS**  
*Eye, Ear, Nose and Throat*

§ §

American State Bank Building  
Phone 705  
Kearney, Nebr.

*Over Hazlett's*  
**DR. O. L. ERICKSON**  
*Dentist*

§ §

2111 Central Avenue  
Phone 43 Phone 325  
Kearney, Nebr.

**DR. R. W. DONOVAN**  
*Dentist*

§ §

Office Over Henline-Armitage Drug  
Store.  
Kearney, Nebr.

**DENZLER**  
*The Dentist*

§ §

Pratt Building  
Phone 60  
Kearney, Nebraska

"Tis surely most confusing,"  
 Milady sadly sighed,  
 "I can't make up my mind  
 What style of suit to wear," she cried.

Just listen—"Jackets will longer be,  
 No Jackets will remain short,  
 Skirts will be much fuller,  
 No narrower's" the report.

"To put my mind at ease,"  
 Milady sighed again, and said,  
 "I'll purchase mine at  
 Kaufmann & Wernert's—There,  
 Styles are always right if you please."

## Spring 1921—

¶ *Let us solve your planting problems with our  
 trustworthy, western grown nursery products.  
 We sell our stock direct to planters only, and  
 ship anywhere. 48 page catalogue free.*

# Hutchinson Nurseries

KEARNEY, NEBRASKA



BLUE AND GOLD

*Autographs*

1921

BLUE AND GOLD

*Autographs*

1921