

Blue
and Gold

1926

Arch
LB1905
K4
B57x
1926
c.3

OR REFERENCE

BE TAKEN FROM THIS ROOM

LIBRARY BUREAU

UNIVERSITY OF NEBRASKA AT KEARNEY



3 5085 00554 5140

STATE TEACHERS COLLEGE
LIBRARY
KEARNEY, NEBRASKA
CLASS [REDACTED] BOOK [REDACTED]





The Blue and Gold

VOLUME II



1926

STATE TEACHERS COLLEGE
KEARNEY, NEBR.





The Mascot of K. S. T. C.



26278

378

N 27b

V. 11

N.S.T.C.

N.S.T.C.

FOREWORD



The purpose of this volume is to portray
the school life during the year 1926.

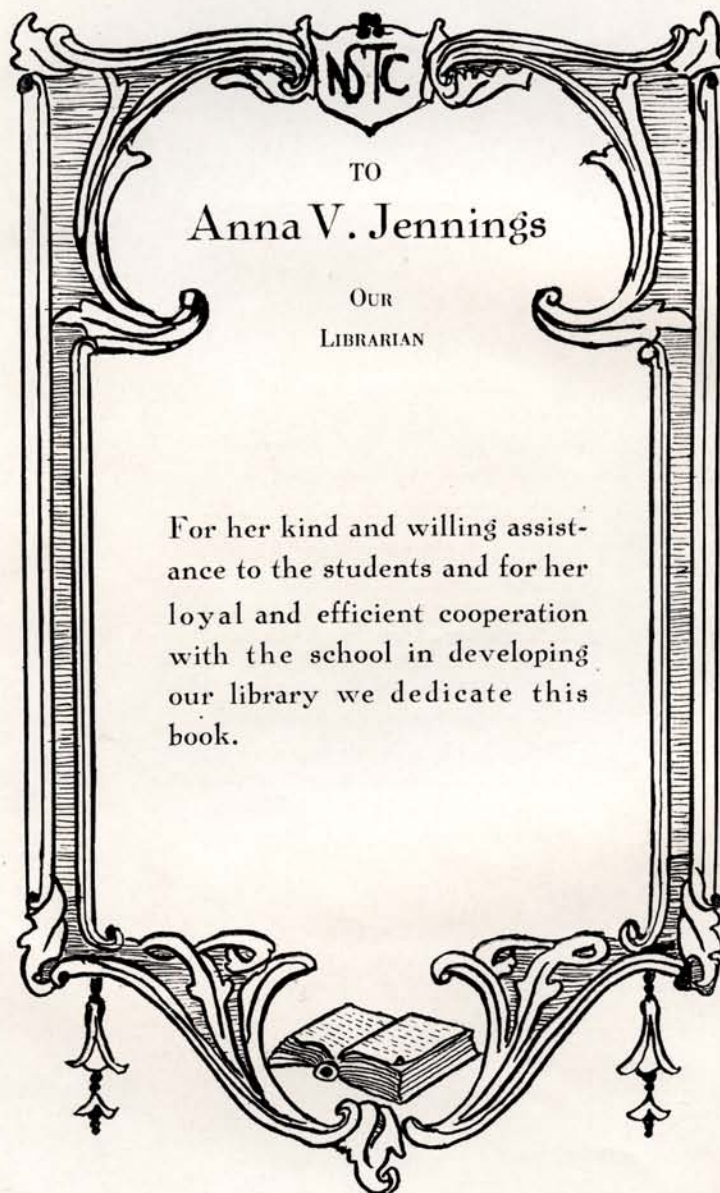
THE ANTELOPE, THE MASCOT OF
OUR SCHOOL

It has led our athletes in their activities;
it has encouraged our forensic teams in
their contests; it has inspired our organ-
izations in their work of improvement;
and it is the central figure about which
our 1926 Blue and Gold is builded.

If this book aids anyone in recalling
school events in which they have been in-
terested, we shall feel that our efforts have
been worth while.—The Editor.



(1926)



TO
Anna V. Jennings

OUR
LIBRARIAN

For her kind and willing assistance to the students and for her loyal and efficient cooperation with the school in developing our library we dedicate this book.





ANNA V. JENNINGS.





K. S. T. C.

On the plains of western Nebraska
The Antelopes roam at will;
They frisk and they play, by night and by day
And romp over prairie and hill.

With beauty and grace and poise
This creature so agile and free
With its haunts on the plains far from high-
ways and lanes
Is the mascot of K. S. T. C.

The Antelopes here are the students,
The teachers the caretakers true,
The campus and halls and ivy clad walls
Are the haunts the Antelopes knew.

May we ever be true to our college
To the teachers and standards they hold,
To the friends we knew and the pals so true
Our mascot and the Blue and the Gold.

—Nolan Alexander.





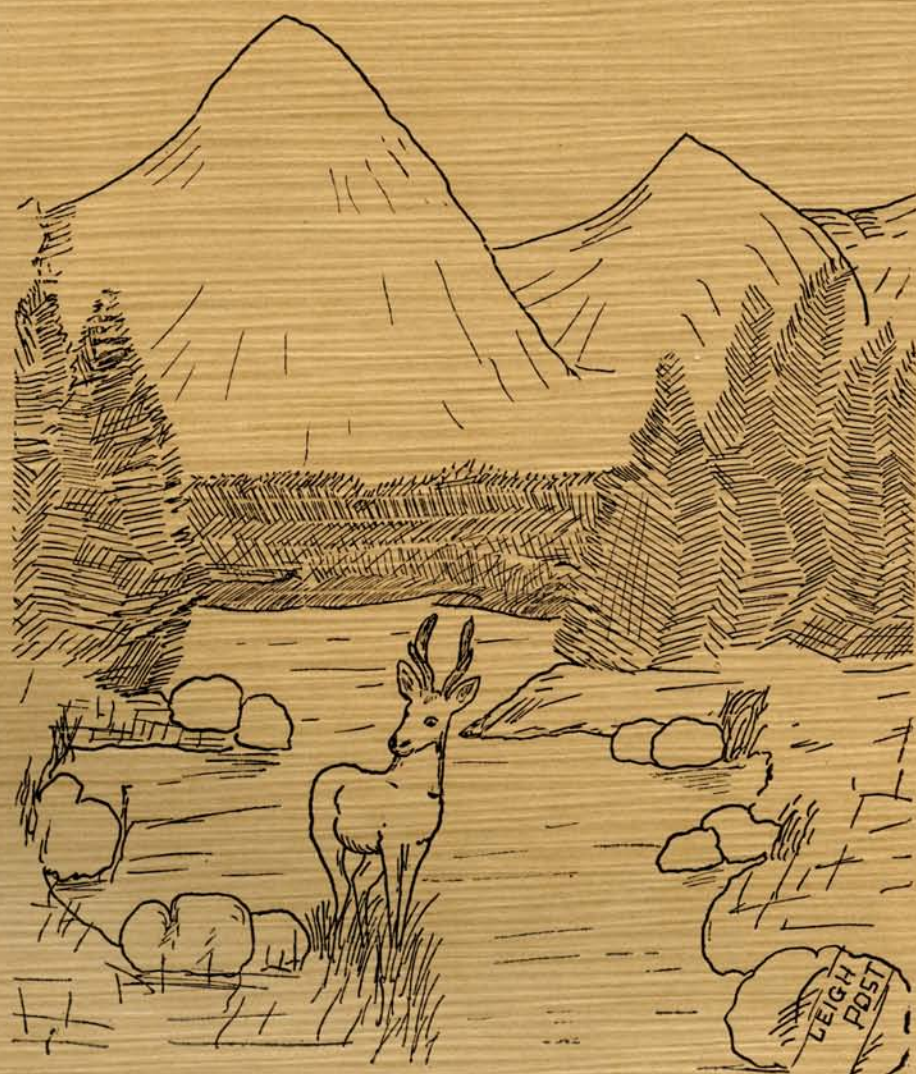


Order of Books.

§ §

- Book I. Haunts of the Antelopes.
- Book II. Guides of the Antelopes.
- Book III. The Antelopes.
- Book IV. Activities of the Antelopes.
- Book V. Friskings of the Antelopes.





Haunts of the Antelope



THE TRICKLING RAIN DROPS, IN SPLASHES ON THE LAWN.



WISTO

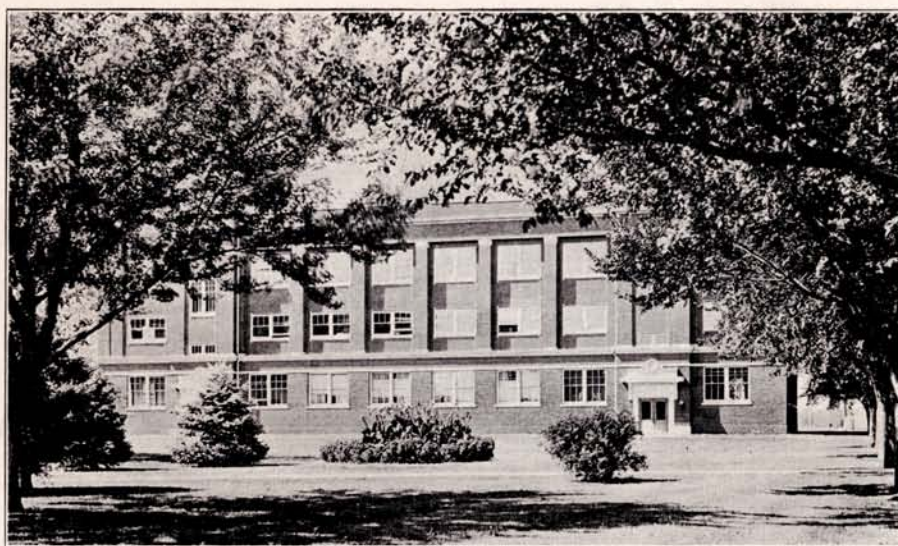


"NOTHING NOW IS LEFT BUT A MAJESTIC MEMORY."

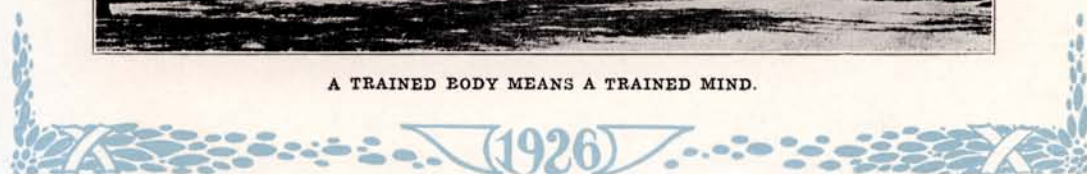
(1926)



WHEN IN LAYING OF THE STONE; OUR THOUGHTS FOR OTHERS RISE.



A TRAINED BODY MEANS A TRAINED MIND.





THE SNOW—SOFTLY, SILENTLY, FLAKE BY FLAKE.





A TRAINED MIND; THE PRODUCT OF HARD STUDY.



KISTO



A HEARTY RECEPTION.



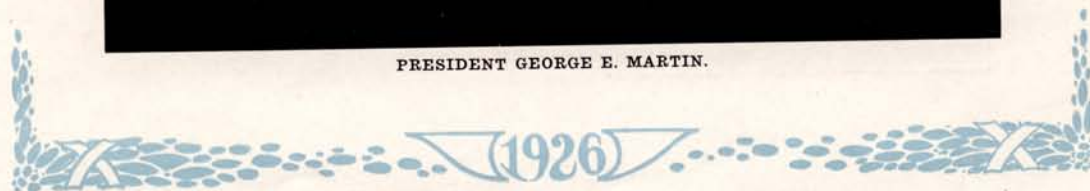
"BIRD'S EYE VIEW BY WEST LINCOLN WAY"
FOUR DAYS STONEWORKERS' MEETING HERE



Guides of the Antelopes



PRESIDENT GEORGE E. MARTIN.





- EDITH M. SMITHEY—Registrar. Credentials Committee. Schedule Committee.
 BESSIE S. BLACK—Bursar. Chairman Antelope Board. Faculty Flower Committee.
 RUTH E. ELLIOTT, A. B.—Dean of Women. Committee on Extra-Curricular Schedules. Advisory Board of Y. W. C. A., Sponsor Women's League. Member of Placing Bureau. Convocation Committee, 2nd quarter.
 FLORENCE K. MILLER, A. B.—Secretary to President. Zip Club. Faculty Flower Committee.
 MARION C. SMITH—Art. Sponsor Freshman Class.
 MINNIE LARSON, A. B.—Art. Social Committee Y. W. C. A.





CARRIE E. LUDDEN, B. ED.—Biology. Sponsor Aspasians, Academy of Science and Mathematics, Secretary Alumnae Association, Athletic Board.

AGNES CRISP, A. B.—Biology. Academy of Science and Mathematics.

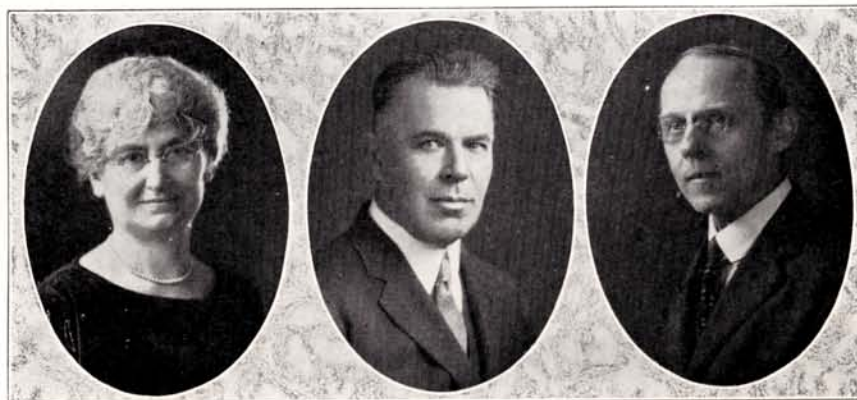
B. H. PATTERSON—Commercial Education. Secretary Athletic Board, Sponsor Commercial Club, Sponsor Catholic Club.

J. H. HALE—Commercial Education. Sponsor Junior-Senior Provs., Convocation Committee, 1st quarter.

ETHEL M. SUTTON, A. B.—Commercial Education. Sponsor Commercial Club, Athletic Board.

A. J. MERCER, A. B., A. M.—Earth Science. Committee on Extra-Curricular Schedules, Committee on Examination for Credit, Academy of Science and Mathematics.





LULA E. WIRT, A. E.—Education. Placing Bureau. Curriculum Committee.

F. M. BULLOCK, PH. B., A. M.—Education.

A. L. PHILLIPS, B. PD., A. B., A. M.—English. Sponsor Eloquent. Sponsor Forensic League. Honorary Member of Pi Kappa Delta. Committee on Extra-Curricular Schedules.

MARY CRAWFORD, A. B., A. M.—English.

JOHN F. MATTHEWS, A. B.—English. Sponsor English Club. Articulation Committee. Treasurer of Alumnae Association. Convocation Committee 1st quarter.

MIRIAM ECKHARDT, B. L.—English. Sponsor Theatre Arts League. Debate Coach.





RALPH W. NOYER, A. B., A. M., PH. D.—Director of Extension, Placing Bureau, Antelope Board, Sponsor and Honorary Member of Xi Phi.

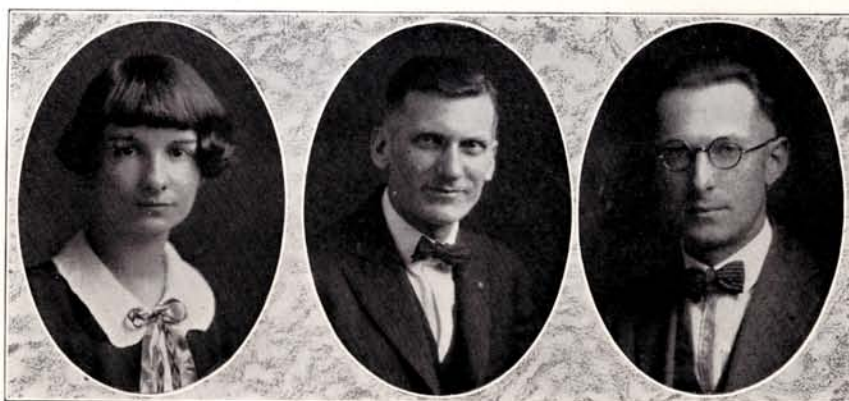
MABEL P. SCOUTT—Secretary of Extension Department, Advisory Board Y. W. C. A., Honorary Member of Xi Phi, Convocation Committee 2nd quarter.

ROMAYNE WEBSTER, B. S.—Home Economics, Academy of Science and Mathematics, Advisory Board of Y. W. C. A.

LOUISE ENOCHS, B. S.—Home Economics, Advisory Board Y. W. C. A.

OTTO OLSEN, A. B.—Industrial Education, Sponsor Senior Class, Sponsor Manual Arts Club, Convocation Committee 2nd quarter.

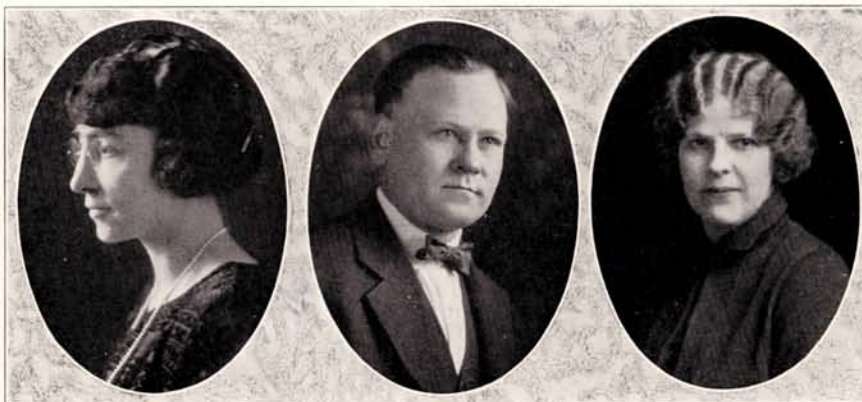
VERNE C. FRYKLUND, A. B.—Industrial Education, Sponsor Junior Class, Sponsor Manual Arts Club.



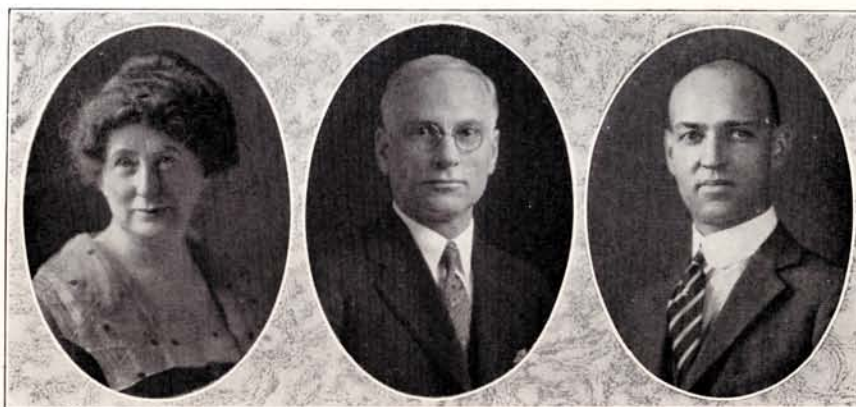


ANNA V. JENNINGS, B. L. S.—Librarian. Chairman Lyceum Committee, Curriculum Committee.
 KATHERINE NEPTUNE, A. B.—Library. Sponsor, Apasians.
 EDITH RUNDLE, A. B., B. S., IN ED. A. M.—Latin. Sponsor Latin Club.
 M. S. PATE, A. B., A. M.—Mathematics. Chairman Athletic Board, Chairman Advisory Board, Placing
 Bureau, Sponsor Freshman, Academy of Science and Mathematics.
 EMMA E. HANTHORN, A. B.—Mathematics. Curriculum Committee, Academy of Science and Math.
 ALMA HOSIC, A. B., A. M.—Modern Language, French. Sponsor Campfire, Sponsor French Club,
 Articulation Committee, Committee on Examinations for Credit, Convocation Committee 3rd quarter.





ETHEL HILL, A. B.—Modern Language, Spanish. Sponsor Spanish Club, Sponsor Y. W. C. A.
FRED R. FULMER.—Physical Education. Sponsor K. Club, Zip Club, Athletic Board.
JANET PICKENS, A. B.—Physical Education. Sponsor W. A. A., Advisory Board.
LILLIAN B. STUFF, A. E., B. S. and R. N.—Physical Education. School Nurse.
H. O. SUTTON, B. S.—Physical Science. Academy of Science and Mathematics, Chairman of Curriculum Committee, Chairman Credentials Committee.
J. I. ENGLEMAN, B. S.—Physical Science.—Academy of Science and Mathematics Council, Sponsor Y. M. C. A., Convocation Committee 3rd quarter, Treasurer N. E. A. Unit.





- R. C. ROGERS, B. S., B. M.**—Public School Music. Director of Band and Orchestra.
- MRS. UNA M. SAWYER**—Public School Music. Graduate of University School of Music, Pupil of D. B. Townner and Warren C. Coffin, Chicago, Advisory Board Y. W. C. A.
- MRS. H. J. HULL**—Piano. Pupil of Wm. Sherwood. Affiliated Teacher of Nat'l Academy of New York. Sponsor B. Natural Club.
- MARJORIE MILTZ**—Public School Music.
- R. W. POWELL, B. S.**—Rural Education. Sponsor Rural Club, Placing Bureau President of Faculty N. E. A. Unit.
- GAIL W. POWELL, A. B.**—Rural Education. Sponsor Rural Club, Sponsor Senior Class, Convocation Committee 3rd quarter.





- C. N. ANDERSON, B. S.**—Social Science. Sponsor History Club, Chairman Schedule Committee.
- JENNIE M. CONRAD, A. B.**—Social Science. Sponsor History Club, Sponsor Sophomore Class, President Alumnae Association, Convocation Committee 1st quarter.
- HANS C. OLSEN, A. B., A. M., PH. D.**—Director Training School. Honorary Member Xi Phi, Sponsor Sophomore Class, Placing Bureau, Credentials Committee, Curriculum Committee, Articulation Committee, Lyceum Bureau Committee.
- CORA O'CONNELL, A. B., A. M.**—Principal of High School. Sponsor Junior Class, Committee on Examination for Credit.
- FLORENCE CASE, A. B., A. M.**—Training School. Sponsor Zip Club, Advisory Board Y. W. C. A.
- C. LUGENIA GLADNEY, B. S.**—Training School. Advisory Board Y. W. C. A., Advisory Committee.



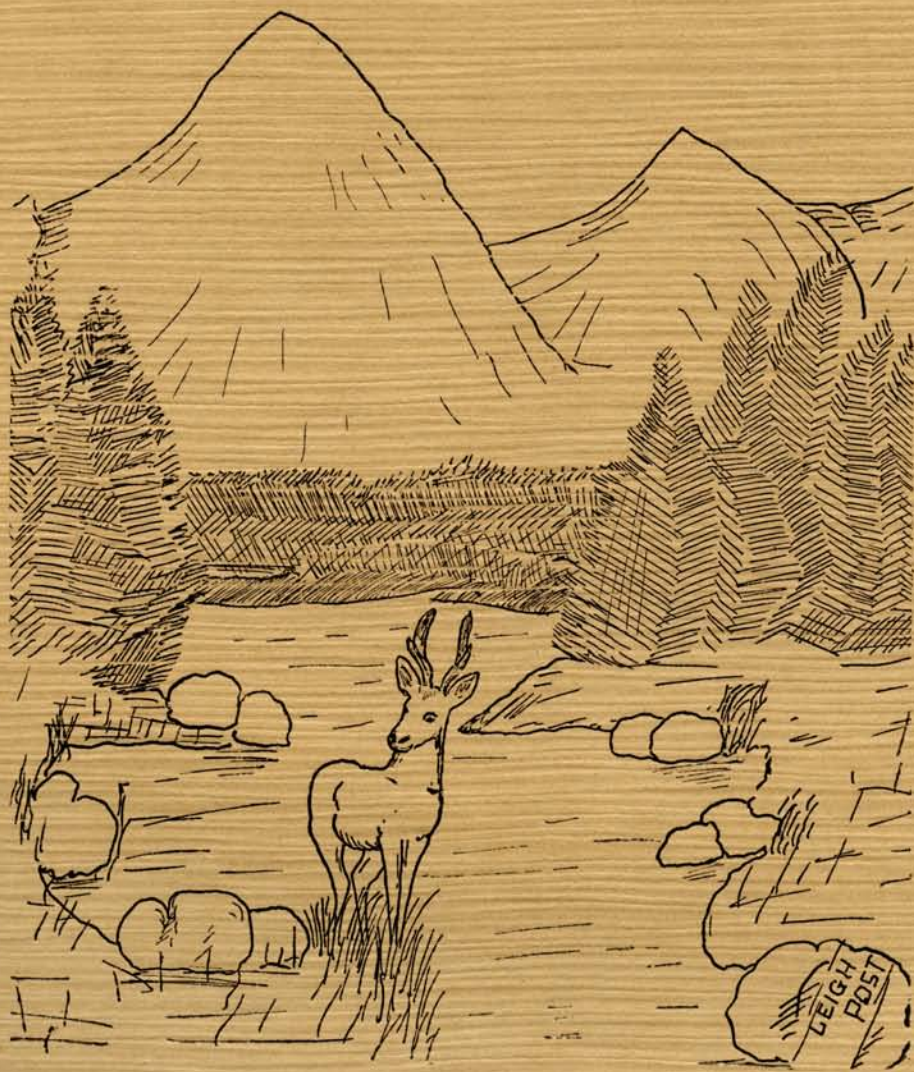


IDA K. BRINK, E. S.—Training School.

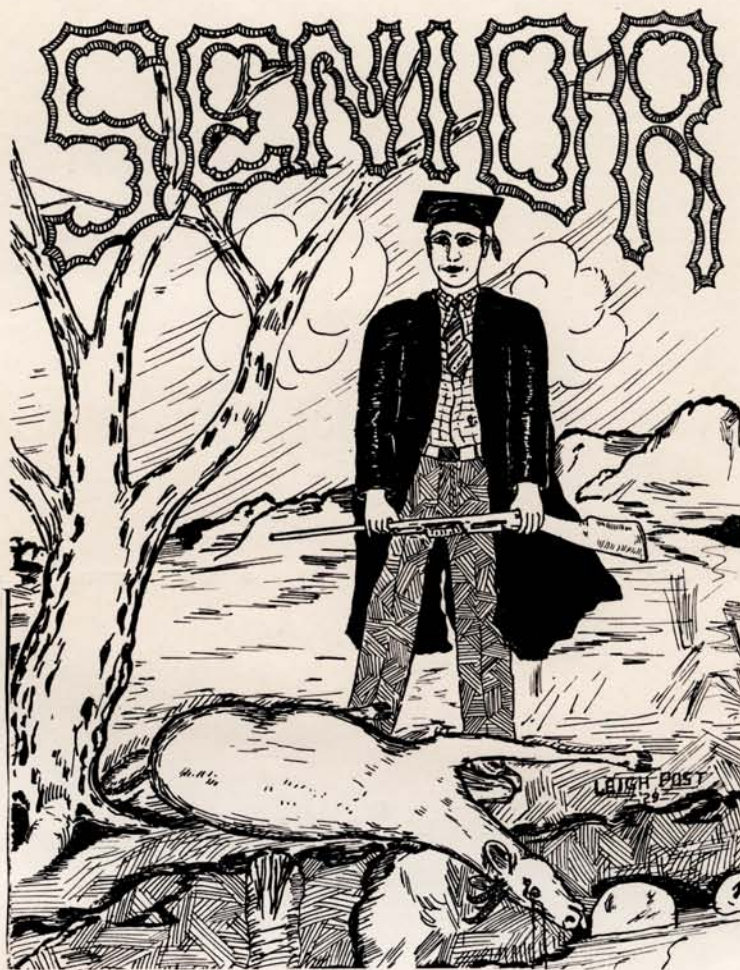
MALVINA SCOTT, B. S., A. B.—Primary Supervisor. Convocation Committee 2nd quarter.

AGNES KNUTZEN, A. B., PH. E.—Kindergarten Supervisor.





The Antelopes.





OTTO OLSEN

GAIL W. POWELL



Senior Sponsors.



KISTO



NOLAN ALEXANDER—Y. M. C. A., Epsilon Om, Pi Kappa Delta, Xi Phi, Zip Club, Academy of Science and Mathematics, N. E. A., Convocation Committee. Nolan has worked at tasks both old and new, and really accomplished quite a few.

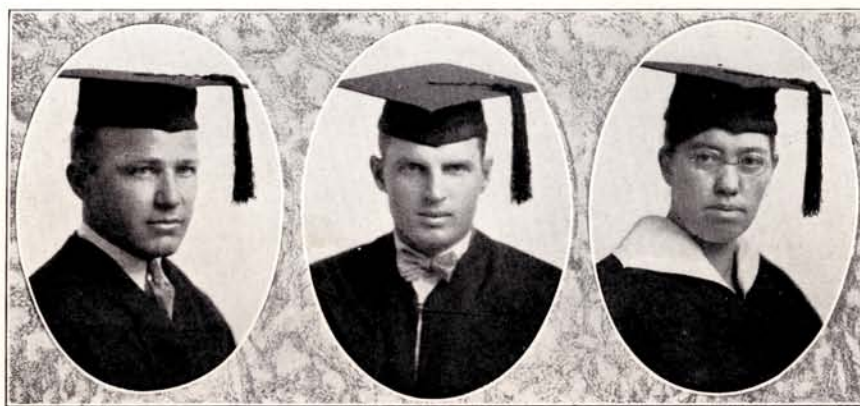
CARROLL ANDERSON—Y. M. C. A., Xi Phi, Academy of Science and Mathematics, N. E. A. Teaching Science is Carroll's task for a better teacher you could not ask.

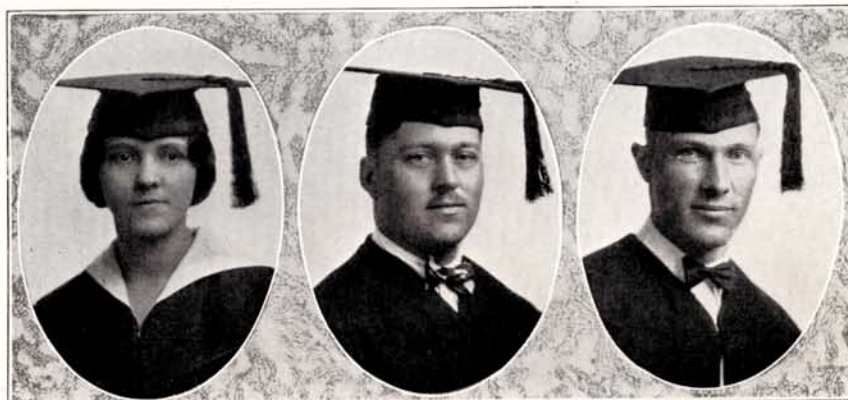
HOLGAR ANDERSON—Academy of Science and Mathematics, N. E. A. Holgar is tall and slender and quiet perhaps, but if there's something to do he's always on top.

ARTHUR AREHART—Y. M. C. A., Xi Phi, Academy of Science and Mathematics, Zip Club, N. E. A., Manual Arts. Art's reputation as a referee, has reached far and wide you must agree.

ROBERT BEST—Xi Phi, Academy of Science and Mathematics, Zip Club, Theater Arts. Equally as good as the rest, Bob is classed as the "Best."

RENETTA BIRD—Y. W. C. A., French Club, History Club, N. E. A. She does her work each day, in a quiet, dignified way.





HARRIET BURROWS—Academy of Science and Mathematics, Xi Phi, N. E. A. Thinking of herself, never, she's tried to make the Annual the best ever.

KLYTE BURT—Academy of Science and Mathematics, Glee Club, Spanish Club, N. E. A. Klyte's a member of the College four, who will sing K. S. T. C. forevermore.

CARL COX—Y. M. C. A., Academy of Science and Mathematics, Zip Club, K. Club, N. E. A., Manual Arts, Athletic Board. Carl's an athlete strong and true blue, he's for K. S. T. C. though, through and through.

MYRTLE DONAHOO—President Women's League, History Club, Academy of Science and Mathematics, N. E. A., Xi Phi. Dignified smiling and serene, and much more 'tis plainly seen.

LETAH DOYLE—Y. W. C. A., Xi Phi, N. E. A. "A truly great woman, the source of help, happiness and heaven."

AMIE GILBERT—Y. W. C. A., Xi Phi, N. E. A., Pi Kappa Delta, Aspasiants, W. A. A., Zip Club, Stexy. Amie is stately and tall and dignified, a debator, a scholar and much more besides.





HAZEL GILLETTE—Y. W. C. A., Xi-Phi, W. A. A., Academy of Science and Mathematics, N. E. A. Hazel delights in bugs and frogs, a zoo shark she may be, but just the same, she's one of the best you'll every one agree.

ADAVERN GRABILL—Academy of Science and Mathematics, Theatre Arts, Glee Club, N. E. A., Adavern's talents are diversified, she's musical, athletic and a student besides.

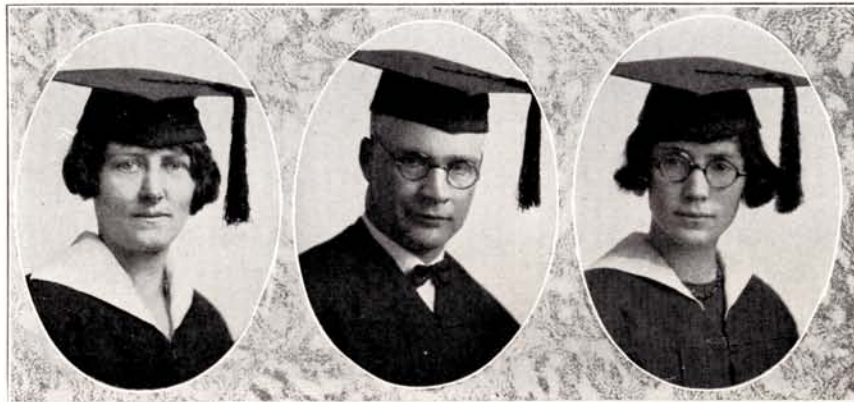
RALPH HANSEN—Y. M. C. A., Academy of Science and Mathematics, Emanons, N. E. A. Hansen was the "Youngest" one, his work 'tis ever well done.

KERMIT JACKSON—Y. M. C. A., Pi Kappa Delta, Xi Phi, Zip Club, N. E. A., Emanons. "He does When we want things begun, we ask Hanzal how 'tis done."

HARRY HORSHAM—Glee Club. How good it 'tis, to clasp the hand of a worthwhile man."

KERMIT JACKSON—Y. M. C. A., Phi Kappa Delta, Xi Phi, Zip Club, N. E. A., Emanons. "He does not work for fame, he does not work for money."





JEAN JARMIN—Theater Arts, Camp Fire. Mrs. Jean Jarmin in dramatics is great, whether she must act love, sacrifice or hate.

ARCHIE LEOPOLD—Y. M. C. A., N. E. A., Academy of Science and Mathematics. We hope a good position he'll ring, for as Superintendent he's quite promising.

FERN McCAIG—Y. W. C. A., Aspasians, N. E. A., Academy of Science and Mathematics. We bank on you, for you are talented and faithful too.

MARY MARCY—History Club, N. E. A. Earth's noblest thing—A woman perfected.

MARGUERITE MARTIN—Xi Phi, Academy of Science and Mathematics, N. E. A. Marguerite is a Chemist and Home Ec. shark, in life or in teaching she'll make her mark.

MARY MASTIN—Latin Club, Xi Phi, N. E. A., Y. W. C. A., Zip Club, Convocation Committee. Mary Mastin 'tis quite clear, is a charming Miss and very dear.





CORRINE MUNSON—Zip Club, W. A. A. Corrine is quite apt at many a task, for a more worthwhile student 'tis unfair to ask.

JESSIE OXER—French Club. Over 'tis a joy to know, her eyes with fun are all aglow.

CORDIE PETERSON—Y. W. C. A., Academy of Science and Mathematics, N. E. A., History Club, Camp Fire, W. A. A. Something bad about you we just cannot say, the good you do fills every minute of every day.

MYRA POOLE—Y. W. C. A., K. Phi, N. E. A., Orophilians, B Natural Club, Academy of Science and Mathematics. You'll go many and many a mile, to find another with such a smile.

IRMA POWERS—Y. W. C. A., N. E. A., Orophilians, Academy of Science and Mathematics. "And each in his separate star, shall draw the things as he sees them, for the God of things as they are."

REMINE REINERTSON—N. E. A., French Club, B Natural. We count on you, many things to help us do.





JULIUS SCHNEIDER—Y. M. C. A., Zip Club, Academy of Science and Mathematics, Emanons, Xi Phi. Julius as he was known in K. S. T. C., was such a student as you seldom see.

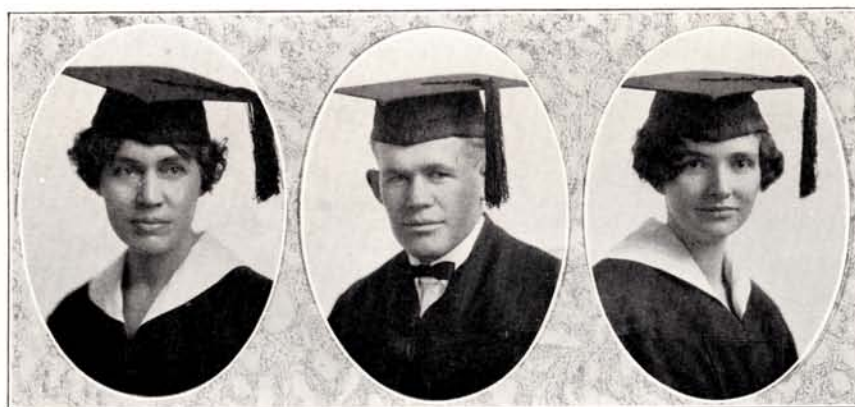
MARJORIE SMITH—Y. W. C. A., Xi Phi, History Club, Academy of Science and Mathematics, N. E. A. Quiet, reserved and conscientious, her talents, and smiles are valuable to us.

HERMAN STALEY—History Club, Academy of Science and Mathematics, N. E. A. Tho Herman's reserved he works with a vim, when he gets in the field we're betting on him.

MARTHA STRATTON—History Club. A nobler woman in every way, you will not find in many a day.

OSCAR SWANSON—Academy of Science and Mathematics, Y. M. C. A., Xi Phi, N. E. A., K. Club. "Swanie" is steady, and faithful and true, an athlete, a scholar, and good fellow too.

GLADYS TIMSON—Academy Science and Mathematics, Y. W. C. A., N. E. A., Xi Phi. Among other things Gladys works for the Dean, that she's really quite busy may be readily seen.





VERNER TURNWALL—Y. M. C. A., Academy Science and Mathematics, Zip Club, Manual Arts. Verner's an artist with lathe and square, and at playing the piano he's quite above fair.

ELSIE VAN HORN—Y. W. C. A., Latin Club, Academy Science and Mathematics, Aspasiens, N. E. A. She does her work well whether easy or hard, her classmates give Elsie their highest regard.

ALTA VAN HORN—Y. W. C. A., Latin Club, Academy Science and Mathematics, History Club, B. Natural Club, N. E. A. She does her best work every day, she keeps her standards high this way.

VIVA WAITE—Academy Science and Mathematics. Viva's one of the quiet ambitious kind, a better friend you'll never find.

DOROTHY WILLIAMS—French Club, Commercial Club, History Club, Y. W. C. A., Xi Phi. Dorothy is one who does her best, she works or she plays along with the rest.

GRACE ZEILINGER—Orophilian, History Club, Spanish Club, Y. W. C. A. Quiet and calm and always at ease, she does her work with the best of these.





Seniors.

In the fall of 1922 we came to K. S. T. C. a group of freshmen, many of whom were just out of high school while some boasted of a year or more of teaching experience. As is usual with the new students of any school we bore with the jesting of the upper classmen and the marked superiority of the sophomores. We knew what we were in school for and cared little for the other activities of the institution at first but we were willing to learn from those who were more experienced and before the quarter was well begun we were as loyal a bunch of boosters for K. S. T. C. and anything connected with the school as any person could desire. No doubt we got some poor grades in Mathematics or Chemistry or History, but our class was well represented in athletics, in school organizations and in school activities of all kinds.

The members of the faculty who were appointed to guide the green Freshies through the intricate ways of college life were Mr. Otto Olsen and Miss Mildred Patton. To these two sponsors we owe much of our success as an organization during our first year in college.

In 1923 we came back to K. S. T. C. Many from our ranks had entered the field of business or dropped by the way while a number of new members entered our class.

It was an entirely different group than the one which entered one year before as freshmen. It was a group of students now who could look down on the freshies and flaunt their wisdom and importance before the whole school. In fact in our own estimation we were the wisest class in the whole institution, even wiser than we were during our junior and senior years. But with all of our haughty pride and show of power, and our growing distaste for study we completed the sophomore year.

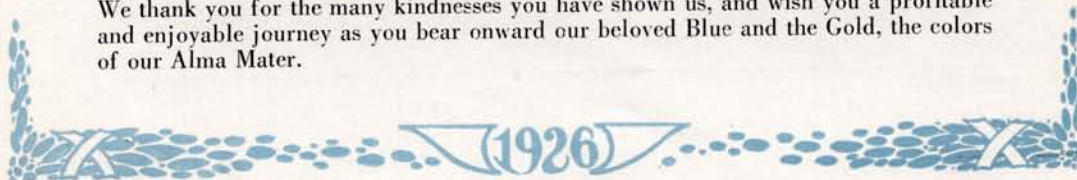
During this year Miss Patton accepted a position in Gainsborough, North Carolina. Mrs. Gail Powell was chosen in her place to guide these eager Sophs.

In 1924 we returned to our Alma Mater still further depleted in numbers but still fired by the spirit of progress and filled with desires to do bigger and better things. A large number were chosen to be members of the Xi Phi honorary fraternity.

The fall of 1925 found us back again, seniors. It was a very serious and dignified group which gathered at our first class meeting, for the purpose of organization. A few of our class the year before, had left us. New members had joined our group. A number who had been sophomores the year before, through heavy work had stepped into the senior ranks. The senior class of 1926 was the largest class since Kearney Normal was changed into a Teachers College.

The year was filled with toil and study, however on several different occasions we laid aside our austere mien and made merry once more like Freshmen. The first gathering of this nature was a picnic. The beef steak, marshmallows, campfire and song made it a picnic which will long be remembered. Seniors who live in Kearney opened their homes to the class on numerous occasions. The Senior Sneak Day and picnic in late April was one of the outstanding social events of the year for our class. The juniors entertained the seniors at the Junior-Senior Banquet on May 8.

Juniors, we leave our places in this school to you to do with as you think best. We thank you for the many kindnesses you have shown us, and wish you a profitable and enjoyable journey as you bear onward our beloved Blue and the Gold, the colors of our Alma Mater.





Reddy

JUNIOR





VERNE C. FRYKLUND.

CORA O'CONNELL.



Junior Sponsors.





ROSA EDEN, Kearney—Orophilian, W. A. A., Latin Club. "Quietness."

HENRY ALBRECHT, Orafino—N. E. A., Latin Club. "Altruism."

ILLA FAYE ANDREWS, Kearney—Zip Club, Campfire, French Club, Y. W. C. A., Class President 3rd quarter. "Joyous."

EVELYN BOLDT, North Platte—Y. W. C. A., Academy of Mathematics and Science, N. E. A. "Sociability."

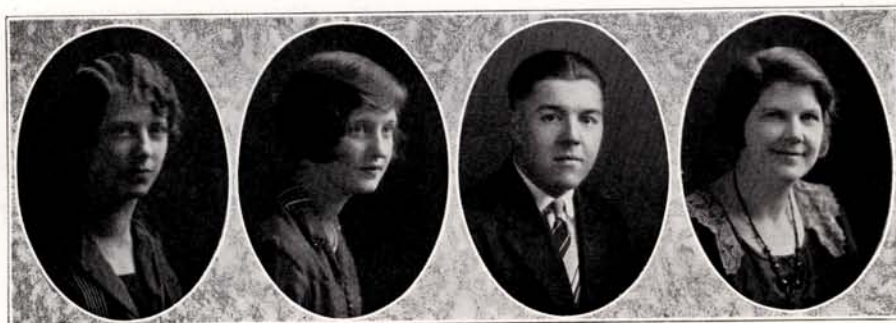
FLORENCE BURROWS, Mason City—Spanish Club, Theatre Arts, N. E. A. "Winsomeness."

CLYDE COX, Keneraw—Zip Club, Academy of Mathematics and Science, K. Club, Y. M. C. A. "Loyalty"

GLADYS CRONK, Los Angeles—Zip Club, N. E. A., Y. W. C. A., Xi Phi. "Friendliness."

RUTH DAVIS, Kearney—Y. W. C. A. "Vivacity."





IVA LOUISE GILBERT—Arnold. Zip Club, Aspasiaus, Y. W. C. A. "Reliable."

RUTH GREGG—Kearney. W. A. A. "Appreciation."

HAROLD HAYDEN—Lexington. Zip Club, N. E. A., Theater Arts, Xi Phi, Spanish Club, Academy of Mathematics and Science, Emanous, Junior President 1st and 2nd quarters. "Ambition."

HAZEL HODGSON—Lexington. Latin Club, Y. W. C. A., B. Natural Club. "Pleasing."

GERALD HUMPERT—Riverdale. Academy of Mathematics and Science, Zip Club, Y. M. C. A., Theatre Arts. "Stodious."

LETA KREWSON—Elmercek. Y. W. C. A., Academy of Mathematics and Science, Glee Club. "Capable."

NANCY LYNCH—Kearney. Spanish Club, Y. W. C. A. "Sincere."

ALETA PARRIOTT—Axtell. Y. W. C. A. "Efficient."





GRACE PENNINGTON—Minden. Y. W. C. A., Rural Club, B. Natural Club. "Responsible."
LOTTIE PENSE—Harvard. Y. W. C. A., Orophilians, Academy of Science and Mathematics. "Alert."
MERLE PIERCE—Oconto. Academy of Mathematics and Science, Y. M. C. A., N. E. A. "Controversy."
JUYNEITA ROSE—Scottsbluff. Academy of Mathematics and Science, Y. W. C. A. "Perfection."
IDA ROSE SAUNDERS—Kearney. Xi Phi, Theatre Arts, Aspasiens, Y. W. C. A. "Enthusiastic."
ERMA SHIRLEY—Alma. Campfire, History Club, N. E. A., Y. W. C. A. "Worthiness."
MABEL SNYDER—Davenport. Aspasiens, History Club, Xi Phi, Y. W. C. A., Academy of Science and Mathematics, N. E. A. "Scholarship."





RUTH THOMPSON, Gibbon—Y. W. C. A., French, N. E. A. "Wholesome."

FLORENCE WAY, Farnam—Y. W. C. A., History Club, N. E. A. "Dependable."

EUNICE YOUNG, Brandon—Y. W. C. A., History Club, B Natural Club. "Musical."

Juniors.

In September 1923, as usual, a great many students came to our college for the first time. This group organized and chose for their sponsors Mr. Vern Fryklund and Miss Cora O'Connell. Under their watchful guidance the class has successfully negotiated three-fourths of its college journey. They successfully survived the annual mixer given for the new students and became acquainted with their fellow students. Before the year was over excellent talent for leadership in the different branches of college life have been developed.

The sophomore year found the class somewhat diminished in numbers but greatly enriched in the knowledge of the ways of college life. During this year the school organizations, many of which were led by sophomore officers, made great strides. It was indeed a banner year for the two-year class.

As the class is completing the third round of its college cycle, it consists of a mere remnant of the large number who entered on that September day in 1923. Their companions have entered various walks of life, and some have entered that mysterious realm from which there is no return. The remaining members, undaunted, are passing onward toward their goal. As a fitting close of this third successful year, the juniors gave the annual banquet for the senior class at the Presbyterian church, May eighth, 1926.

Here is good luck to next year's juniors and a final goodbye to the outgoing seniors.





SOPHOMORE





First Row—Sena Aden, Kearney; Fred Albrecht, Cambridge; Elmer Anderson, Kearney; Elvira Anderson, Omaha; Hazel Anderson, Stromsburg.
 Second Row—Myrtle Anderson, Stromsburg; Lewis Awtry, Stockville; Helen Ayers, Shelton; Violet Baird, Plainview; Leslie Baker, Edison.
 Third Row—Ralph Barry, Kearney; John Bean, Elwood; Emilie Berges, Venango; Dorothy Bishoff, Harvard; Cecile Boggs, Lodge Pole.
 Fourth Row—Clema Borland, Franklin; Allen Bowley, Taylor; Margaret Brodrick, Fairfield; Erma Broomhall, Ericson; Bernice Brown, Arnold.



K.S.T.C.



First Row—Amie Brown, Arnold; Lottie Brown, Cambridge; Juanita Bruce, Kearney; Helen Bulin, Omaha; Evelyn Burman, Kearney.
 Second Row—Estelle Louise Butler, Kearney; Walter Carlson, Funk; Fred Carpenter, Elmcreek; Glen Carpenter, Elmcreek; Seth Compton, Stapleton.
 Third Row—Nilla Couton, Loup City; Ida Craig, Kearney; Frank Croissant, Riverdale; Martha Cronk, Los Angeles, California; Ruth Cruise, Kearney.
 Fourth Row—Ruth Cuit, Kearney; Wayne Danielson, Kearney; Birdella Dawson, Shelton; Bernice Day, Kearney; Helen Day, Miller.

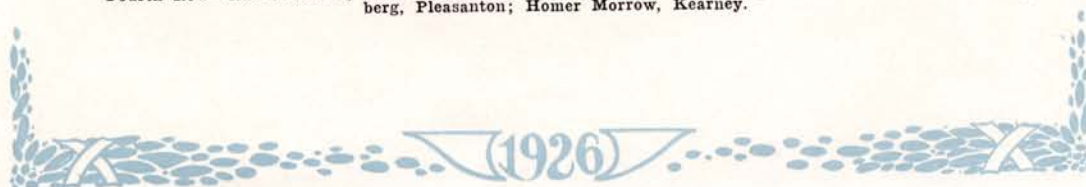


First Row—Mary Deal, Callaway; Agnese Dineen, Chicago, Illinois; Bessie Dodendorf, Bellwood; Kenneth Downing, Arnold; Leola Easterly, Eladen.
 Second Row—Eva Eggleston, Blue Hill; C. O. Evans, Venus; Viola Fecht, Dalton; Merle Frazell, Smithfield; Esther Frühling, Franklin.
 Third Row—Minnie Gengenbach, Eustis; Lois Grierson, Ansley; Mathilde Hansen, Loup City; Lee Harbottle, Columbus; Glen Harden, Riverdale.
 Fourth Row—Gladys Hartwell, Clarks; Ailey Hefner, Fullerton; Luna Homan, Kearney; Mildred Honeywell, Kearney; Erma Imm, Mankato, Minnesota.





First Row—Mildred Jordon, Kearney; Leyla Kittle, Maxwell; Gwendolyn Kundert, Harrisburg, S. Dak.; Olga Kuska, Geneva; Elvira Larson, Stromsburg.
 Second Row—Velma Lehmkuhler, Gandy; Harold Lidgard, Bladen; Hildur Lundberg, Kearney; Milrae Lundberg, Kearney; Homer McConnell, Ravenna.
 Third Row—Anna Macklin, Kearney; Venice Mallory, Kearney; Adelyn Mason, Arcadia; Beatrice Mattox, Comstock; Mabel Matzke, Western.
 Fourth Row—Annie Meents, Blue Hill; Thelma Metzger, Silver Creek; May Mills, Arnold; Malay Moberg, Pleasanton; Homer Morrow, Kearney.





First Row—Sherman Mulvancy, Mason City; Verla Murrish, Kearney; Otto Nelson, Mason City; Mary Nichols, Kearney; William Nicholas, Kearney.
 Second Row—Raymond Nicklin, Amherst; Anna Olson, Ord; Bernice Overturf, Ericson; Clifford Paine, Oconto; Mabel Patty, Chappell.
 Third Row—Dora Pennington, Minden; Edith Peterson, Minden; Myrtle Pierce, Shelton; Robert Pollard, Farnam; Lloyd Pounds, Ogallala.
 Fourth Row—Freda Reddy, Kearney; Marie Rennicker, Beaver City; Nellie Sadler, Kearney; Alden Schaper, Mason City; Leona Sheldon, Kearney.





First Row—John Siebinauer, Elmcreek; Ethel Smith, Kearney; Glenva Stockton, Beaver City; Hazel Stryson, Minden; Lulu Sunderland, Holdrege.
 Second Row—Inez Thomas, Edgar; Mildred Thomas, Kearney; Gerald Thurman, Callaway; Arthur Troyer, Gibbon; Ruby Weston, Gibbon.
 Third Row—Mrs. Louise Wigton, Kearney; Helen Williams, Gothenburg; Irene Williams, Kearney; Myrtle Williams, Beaver City; Dolores Yetter, Fullerton.
 Fourth Row—Alice Yoder, Elmcreek; Margaret Yoder, Elmcreek; Viola Youngquest, Loup City; Edna Zehr, Chappell.





Sophomores.

The Sophomore class in Kearney College has made a name for itself in all of the school activities. Early in the year the class met and chose the leaders for the quarter, with John Bean, of Elwood, as president. Homer Morrow, of Kearney, was elected vice-president, Sherman Mulvany, of Mason City, secretary, and Homer McConnell, of Ravenna, treasurer. Soon after organizing, the sophs decided to back student government and convocation attendance so a representative was elected to the student council committee and arrangements were made for a rally at a convocation.

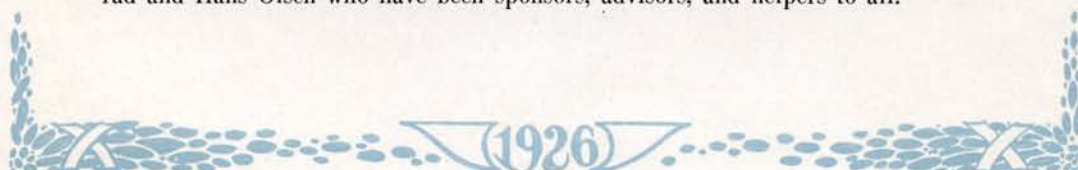
The sophomore edition of the Antelope, put out on November 13 in brilliant red ink was edited by Margaret Yoder, of Elmcreek, and Homer Morrow, of Kearney. The night of the thirteenth of November the class held its first party in the Y. M. C. A. rooms at the gymnasium.

Not to be outdone in any way by any of the other classes the sophomores put across a big sophomore day, on January 22. At the convocation hour the sophs put on a program which, according to many students and faculty members was one of the best of the year. A faculty meeting burlesque was the important number of the program. The faculty met in regular session with each person impersonated by some member of the sophomore class. Homer Morrow represented President Martin; Ethel Smith, Miss Stuff; Juanita Bruce, Mrs. Elliott; Margaret Yoder, Miss Smith; Anna Macklin, Miss Crawford; Aily Hefner, Miss Wirt; Seth Compton, Mr. Noyer; Wayne Danielson, Hans Olsen; Marjorie Curley, Miss Conrad; Henry Riley, Mr. Bullock; Frank Croissant, Mr. Anderson; and Kenneth Downing, Professor Fretwell Knight Foghorn, of Podunk Valley University, a guest teacher. The program was greeted with applause when some member of the mock faculty characterized himself by a favorite gesture or expression so well known to the students.

The climax of the sophomore day was the all-school party and dance in the evening. It was attended by a large crowd of students who declared that it was one of the biggest and most successful social events of the year. Lee Harbottle, of Columbus, second quarter president, engineered the class day and was largely responsible for the success. Kenneth Downing, of Arnold, had charge of the party in the Y. M. C. A. rooms.

The sophomores have taken part in all intercollegiate activities. Ihling Carskadon, of Gothenburg, is football captain for next year. Other classmates receiving football letters are: Robert Pollard, of Farnam, Henry Riley, of Kearney, and Leon Aunspaugh, of Gothenburg. Basketball letters were earned by Pollard, Carskadon, and Huber. Margaret Yoder, of Elmcreek, represented the sophomores on the debate squad. The class took the interclass track trophy in a meet held March 30, winning by a large margin over their nearest competitor, the freshmen.

Marjorie Curley, of Kearney, was elected to lead the class through the third quarter. The sophomores owe much of their success as a class to Miss Jennie Conrad and Hans Olsen who have been sponsors, advisors, and helpers to all.







First Row—Esther Alberts, Wood River; Allen Anderson, Kearney; Clayton Anderson, Gothenburg;
Dora Anderson, Juniata; Earl Anderson, Clearwater; Ethelyn Anderson, Stromsburg.
Second Row—LaVerna Anderson, North Platte; Margaret Anderson, Merna; Paul Anderson, Omaha;
Eunice Arnold, Kearney; Faye Arnold, Cozad; Mary Jane Ayres, Kearney.
Third Row—Margaret Bair, Kearney; Nada Bair, Kearney; Mable Banks, Farnum; Velma Bassford,
Wilsonville; Gertrude Batz, York; Della Benson, Silver Creek.
Fourth Row—Ruth Bergstrom, Holdrege; Milda Berlin, St. Edward; Dorothy Bohrer, North Loup;
Ruby Bowen, Elmcreek; Catherine Boyle, Kearney; Eva Buck, Shelton.
Fifth Row—Gordon Buck, Shelton; Lola Bunger, Upland; June Burchell, Minden; Beulah Burton, Scotia;
Freda Butherus, Bartley; Erna Camp, Cozad.





First Row—Margaret Campbell, Grand Island; Clarence Capps, Lebanon; Pauline Carey, Kearney; Cecilia Carl, Geneva; Jeanette Carlson, Stromsburg; Agnes Christenson, Ord.
 Second Row—Mabel Cloughesy, Albion; Lola Cook, Octavia; Velma Crouch, Archer; Edythe Davis, Bartley; Myrtle Davis, Hartwell; Ellen Deaver, Lodge Pole.
 Third Row—Raymond Denton, Cowles; Dolla Doggett, Stromsburg; Francis Donnell, Kearney; Perle Dossett, Axtell; Ferris Duke, Mason City; Cora Ellingson, Broken Bow.
 Fourth Row—Ruth Erickson, Holdrege; Wanda Erwin, Kearney; Mildred Esher, Broken Bow; Bonnie Fair, Broken Bow; Arthur Pecht, Dalton; Perry Fitzsimmons, Elwood.
 Fifth Row—Johanna Frolkey, Gandy; Iona Freeland, Axtell; Bonnie French, Edison; Anna Gappa, Ashton; Irwin Getty, Waco; Ena Grafton, Kearney.



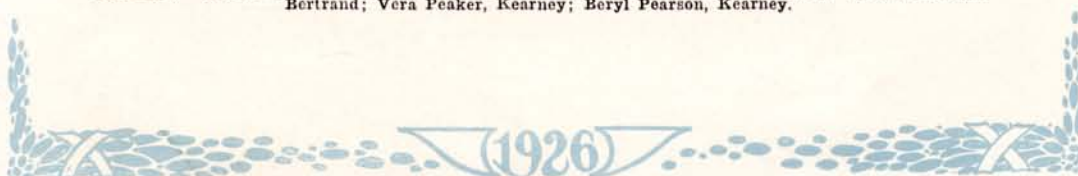


First Row—Orpha Grafton, Kearney; Therese Grantham, Kearney; Mary Grovert, Trenton; Anna Grube, Naponee; Marie Haase, Kearney; Eloise Hanna, Lexington.
 Second Row—Allyn Hanthorne, Superior; Grace Harbert, Moorefield; Helen Hauck, Litchfield; Helen Hawthorne, Trumbull; Margaret Headberg, Axtell; Zetha Hendrickson, Arcadia.
 Third Row—Evelyn Henke, Rockville; Ralph Hopwood, Newark; Frances Householder, Newark; Clyde Hutchins, North Loup; Emily Ireland, Fremont; John Jacobson, Hazard.
 Fourth Row—Verna Jensen, Norman; Alice Johnson, Bridgeport; Martin Johnson, Kearney; Harley Kelley, Mason City; Dorothy Keens, Kearney; Dorothy Kock, North Platte.
 Fifth Row—June Kock, North Platte; Evelyn Lammers, Columbus; Ruth Lindberg, Kearney; Helen Lindstrom, Wilcox; Blanche Line, Kearney; Genevieve Lindquist, Cushing.





First Row—Theresa Lockman, Scotia; Harold Luse, Scotia; Eileen Lynch, Kearney; Ellis Neal McKenzie, Elwood; Lois McLaughlin, Moorefield; Eva McMahon, Eddyville.
 Second Row—Ethel Macy, Bruning; Anna Marguardt, York; Harold May, Minden; Helen Meyer, Enders; Delta Miller, Culbertson; Alice Moore, Wood River.
 Third Row—Elizabeth Moore, Naponee; Sadie Morrison, Loup City; Mildred Myer, Ravenna; Blanche Myers, Sargent; Eyron Nellson, Kearney; Marion Nellson, Kearney.
 Fourth Row—Magnolia Nelson, Kearney; Mary Nelson, Cozad; Rodger Nelson, Upland; Gertrude Nielson, Chambers; Lois Noble, Miller; Dorothy Oldfield, Kearney.
 Fifth Row—Arthur Olson, Sweetwater; Edda Olsson, Ord; Hazel Panek, Kearney; Juniata Parkyn, Bertrand; Vera Peaker, Kearney; Beryl Pearson, Kearney.





First Row—Elaine Peterson, Bertrand; Ethel Peterson, Bertrand; Florence Peterson, Lexington; Elma Pettijohn, Kearney; Gladys Pierson, Clarks; Leigh Post, Cowles.
 Second Row—Mable Predmore, Gandy; Marguerite Rask, Boelus; Shirley Raymond, Scotts Bluff; Eileen Reed, Bladen; Winfield Reed, Kearney; Evelyn Reese, Wallace.
 Third Row—Leanore Reinertson, Hazard; Grace Roads, Axtell; Gladys Rodgers, Bladen; Gladys Ruebsman, Harvard; Carl Sandstrom, Bertrand; Dorothy Schanou, Odessa.
 Fourth Row—Myra Schaper, Mason City; Wauneta Schlesinger, Shelby; Marie Schneider, Ravenna; Alma Schumacker, Scotts Bluff; Marie Scranton, Miller; Alta Seybolt, Broken Bow.
 Fifth Row—Verna Skelton, Oconto; Ferne Slack, Minden; Mrs. Sieberger, Kearney; Evelyn Stoddard, Litchfield; Mary Straka, Lexington; Stella Swearonger, Pleasanton.





First Row—Gwendolyn Swift, Amherst; Lucy Taft, Cozad; Arvilla Temple, Veima; Edna Thomas, Lebanon; Gertrude Thomas, Edgar; Marie Toillian, North Platte.
 Second Row—Helen Ughrin, Wellfleet; Archie Uridel, Clearwater; Opal Urwiller, St. Michael; Esther Wach, Wilcox; Viola Waite, Lodge Pole; Andrew Waldmann, Comstock.
 Third Row—Frank Waters, Atkinson; Edna Webb, Odessa; Jack Wheelock, Kearney; Stanley Wujek, Keystone; Mabel Yost, Hastings.
 Fourth Row—Pearle Yost, Harvard; Neola Young, Stella; Lana Zehr, Kearney.





Freshmen.

First Quarter	Second Quarter	Third Quarter
President—Jack Wheelock	Allen Anderson	Erwin Getty.
Vice-Pres.—Elizabeth Clark	Carl Sandstrom	Blanche Myers.
Secretary—Mildred Foster	Gertrude Thomas	Alta Seybolt.
Treasurer—Ralph Dailard	Bonnie French	Leigh Post.

The class of 1929 assembled for the first time on October sixth, with Miss Marion C. Smith and Mr. M. S. Pate for willing and helpful sponsors. The Freshman Class numbered three hundred and thirteen members or nearly half the entire student body. This explains why the freshmen have played such an important part in the school life of Nebraska State Teachers College at Kearney.

The freshman class has been well represented in debating by Miss Ruby Bowen, John Lancaster, Jack Wheelock, and Allyn Hanthorne. Two of the four yell leaders, chosen by the students were freshmen, namely, Miss Hazel Panek and Miss Edythe Davis. Over half of the glee clubs belong to the freshman ranks and many of the soloists. In athletics they have played their part well, for six of the sixteen "letter" men were "freshies." The talents were varied, for dramatics claimed a number from the ranks.


The freshmen were in charge of convocation on Freshman Day, February 12, 1926 and edited the Antelope for that week.

The freshman class proved its originality by introducing programs at their regular class meetings. These programs seem to have met with the approval of the class.

Our stunt for the "Showdown" was successfully presented by Eileen Lynch, Hazel Panek, John Lancaster, Erwin Getty and John Waldman.

We are looking forward with pleasure and interest to our remaining years in college. May they prove as worthwhile as this one has been.





The Freshmen.

There's a joke ever present in college
It's the theme for the Sophomore pranks
The Juniors precise and the Seniors so wise
Make sport of the Freshmen ranks.

It's true that the Freshmen are different
They add new spice to the life,
For they're new at the game and can't be the same
As the classmen who've seen more of strife.

They drape themselves over the fountain
And stand about in the hall
These things have been done since the school began
We need not be worried at all.

They tell of their victories in high school
And the wonderful things they have seen
But we did the same when first we came
To this college as Freshmen quite green.

They may boast of their good grades in science
And their excellent showing in Math.
But why make a fuss, it can't affect us
Why should it stir up our wrath?

Though the Sophomores, Juniors and Seniors
Make fun of the Freshmen new,
We'll have to admit, they have done their bit
When there was anything hard to do.

—Nolan Alexander.



Junior and Senior Preps.

The Junior and Senior Preps are the classes of 1931 and 1930 respectively. Our number is smaller this year than it has been for several years. Professor John Hale and Miss Ethel Hill are our sponsors, who have been ever faithful and loyal to the organization; always ready to help.

At the beginning of the year we organized with Elvira Peterson as president. The one social function we enjoyed during the year was a party at the gymnasium. Although we are smaller than some of the other classes we are 100 per cent strong for K. S. T. C.

Though we have a long journey ahead of us in the educational field we are hoping that nothing will prevent our completing our college course in this institution.

When the new Training School building is completed the Junior and Senior Preps will become a part of the Nebraska State Teachers College Training School High School.

Training School.

The Training School is an essential part of the Nebraska State Teachers College at Kearney. It is composed of five departments: The kindergarten under the supervision of Miss Agnes Knutzen, the first and second grades under Miss Malvina Scott, the third and fourth grades under Miss Ida Brink, and the fifth and sixth grades under Miss Lugenia Gladney. Miss Cora O'Connell is principal of the Training School High School with Miss Florence Case as Social Science critic and Miss Alberta Gibbons as Mathematics and Science critic. The teaching is done by student teachers under the supervision of these capable advisors.

The entire Training School is under the direct supervision of Dr. Hans C. Olsen, to whom much credit is due. Student teachers are given an opportunity to meet and deal with actual school room problems here. Indeed it is a valuable part of our college.





Activities of the Antelopes



Top Row—Mary Mastin, Treasurer; Marguerite Martin, Vice-President; Mrs. Ruth Elliot, Dean of Women; Gladys Cronk, President; Thelma Metzger, Secretary.
 Second Row—Marjorie Smith, Senior; Florence Burrows, Junior; Martha Cronk, Sophomores; Katherine Boyle, Freshmen; Mabel Snyder, Y. W. C. A.
 Third Row—Anna Gappa, Catholic Club; Estelle Louise Butler, Town Girls; Esther Fruling, Out of Town Girls; Myrtle Donahoo, Dormitory; Margaret Yoder, W. A. A.

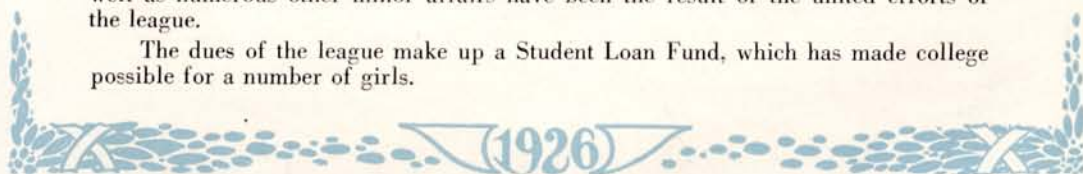
Women's League.

Since the fall of 1921 the Women's League has been numbered among the prominent organizations of the college.

Each young woman upon entering the college, is automatically a member, and is given the opportunity to attend the excellent meetings. These meetings, which are held on the fourth Tuesday of each month are sponsored by the Dean of Women.

The Women's League has done much toward promoting the social activities of the school. The mixer, the Hallowe'en party, May Party and the Valentine Tea, as well as numerous other minor affairs have been the result of the united efforts of the league.

The dues of the league make up a Student Loan Fund, which has made college possible for a number of girls.





Top Row—Mrs. Idarose Saunders, President; Ethel Hill, Chairman of Advisory Board; Mildred Thomas, Program Chairman.
 Second Row—Gladys Timson, Social Chairman; Leona Sheldon, Finance Chairman; Ruth Cruik, Secretary; Amie Gilbert, World Fellowship Chairman, Edith Peterson, Social Service Chairman.
 Third Row—Irene Williams, Under-graduate Rep.; Myra Poole, Membership Chairman; Velma Lemkuhler, Publicity Chairman.

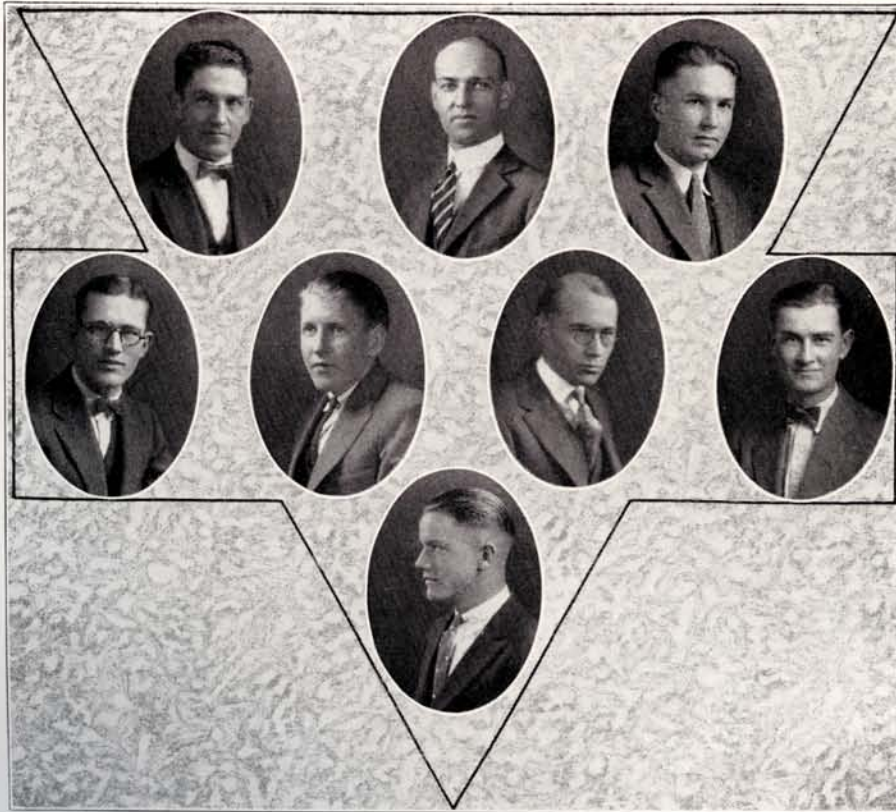
Y. W. C. A.

The Y. W. C. A. has for its purpose: to unite the women students of the college in common loyalty to Jesus Christ, bringing them to accept Him as their personal Savior, building them up in the knowledge of Christ through Bible Study and Christian Service, and enlisting their co-operation with the Christian Church and with other religious workers in the institution.

The women students of the college have always evidenced an interest in this organization, as is shown by its enrollment, at present being approximately two hundred fifty.

The organization meets every Thursday morning at nine-forty for programs and devotionals. Besides these, the Y. W. gives an annual banquet, aids in the special Thanksgiving and Christmas services, sponsors "The Nativity" play, the Holiday Festival, and invites the student body to an Easter Tea. In general, it unites with other leading organizations in carrying out programs that will enrich the lives of its girls.



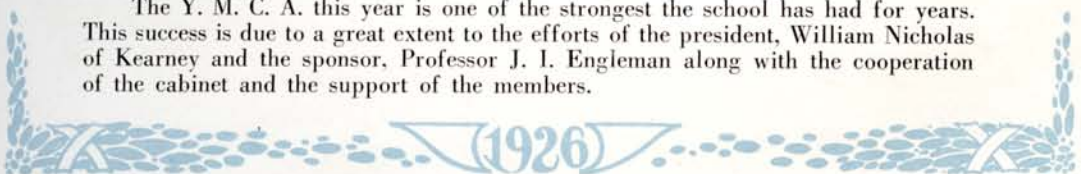


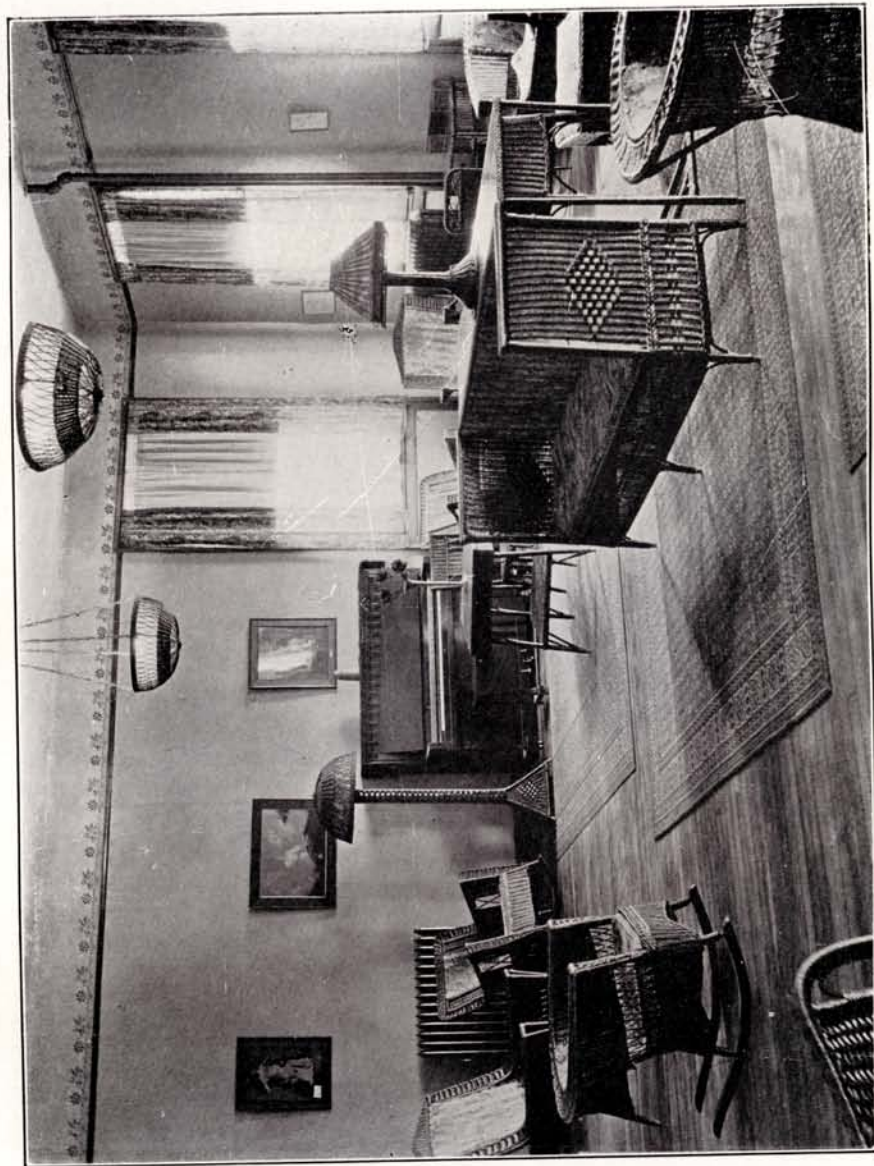
Top Row—Wm. Nicholas, President; Mr. John Engleman, Sponsor; Lee Harbottle, Vice President.
 Second Row—Lloyd Pounds, Program Chairman; Wayne Danielson, Secretary; Carroll Anderson, Devotional Chairman; Sherman Mulvaney, Treasurer.
 Third Row—Kermit Jackson, Publicity Chairman.

Y. M. C. A.

The Young Men's Christian Association of the Nebraska State Teachers College at Kearney is one of the strongest organizations in the school. They have carried out a program of education in international affairs which has been a benefit to not only the young men of the college but to the school as a whole. The organization has been instrumental in securing Ben Cherrington, Doctor Fling, Kirby Page, John Ruskin and other world citizens to speak before the students and faculty on world conditions and problems. Not only has there been an extensive program of this kind carried through but also there have been regular meetings every Wednesday evening in the Y. M. rooms at the gymnasium in which topics of vital importance have been discussed and special talks given by outside men who are interested in student welfare.

The Y. M. C. A. this year is one of the strongest the school has had for years. This success is due to a great extent to the efforts of the president, William Nicholas of Kearney and the sponsor, Professor J. I. Engleman along with the cooperation of the cabinet and the support of the members.





Y. W. C. A. ROOM





CATHOLIC CLUB ROOM.



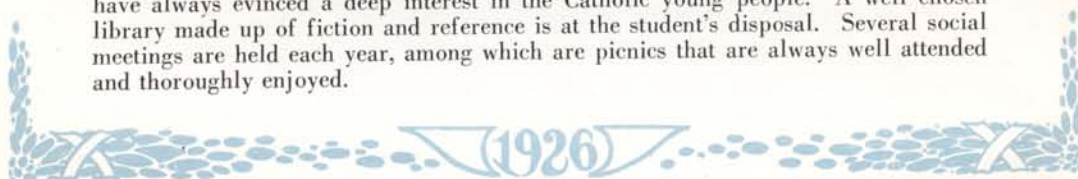


Professor B. H. Patterson, Professor John Matthews, Sponsors; Alice Moore, President; Vera Peaker, Vice-President; Mabel Cloughesy, Secretary and Treasurer.

Catholic Club.

The Catholic Student Association was organized in the early history of the school by Prof. B. H. Patterson and under his guidance and direction, has grown each year in numbers and in loyalty to its cause. Moral education with a religious basis will not suffice in building the character of youth. Definite teachings of religion are the only secure foundation for adequate moral training. A systematic study of the literature and history connected with our church and faith and the correlation of this with our College training for better citizenship and living, is the aim of the organization. Programs each week are planned with the above aim in view and are given each Thursday morning. Professor J. F. Matthews, assistant faculty sponsor, is always interested in the activities of the Catholic Students Association.

The students are fortunate in having an elegantly furnished room in which to hold their meetings. This room is the gift of the Nebraska Knights of Columbus who have always evinced a deep interest in the Catholic young people. A well chosen library made up of fiction and reference is at the student's disposal. Several social meetings are held each year, among which are picnics that are always well attended and thoroughly enjoyed.





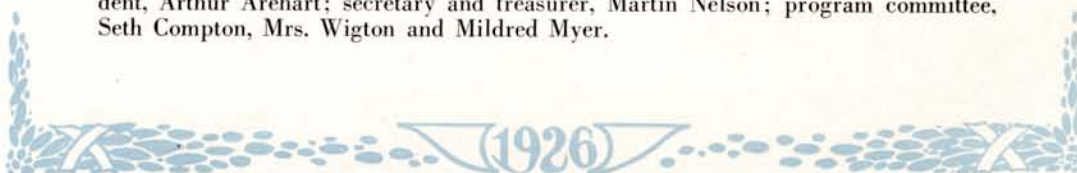
Top Row—Burt, H. Albrecht, Martin Nelson, President Martin, Morrow, M. Pierce, Compton, Thurman, Pollard, Hansen, Carroll Anderson, Alexander.
 Second Row—Doyle, Powers, Slack, L. Brown, Poole, I. Gilbert, Snyder, Berges, A. Gilbert, Morrison, M. Thomas, I. Rennicker, C. Peterson, A. VanHorn, R. Thompson, Nicholas Honzel.
 Third Row—M. Williams, Straton, Mrs. Wigton, McCaig, Pounds, Imm, Gillette, Shirley, Morris, Paine, Arehart, Bird, Olson, Yoe, Croisant, Mason.
 Fourth Row—Myer, Banks, Way, Ayres, Benson, Hansen, F. Burrows, Timson, M. Anderson, E. Smith, M. Smith, Boldt, M. Martin, Grabill, Mastin, D. Williams.
 Fifth Row—H. Lundberg, Mattox, Meents, Stockton, Weston, Eggleston, Jackson, H. Burrows, Hayden, E. VanHorn.

N. E. A.

The first student unit of the National Educational Association to be established in the United States has been organized by the prospective teachers in the Nebraska State Teachers College at Kearney. The unit is made up of eighty-seven paid up members.

The regular meetings held on the first Monday of every month have been well attended. The programs have consisted of discussions on topics of interest to those of the teaching profession. Professor H. O. Sutton, head of the Physical Science Department at the college, gave the first address and told of the values of such a student unit and what it could do toward professional gains. Following the N. E. A. meeting at Washington, Miss Lula Wirt and Professor Powell gave accounts of their experiences there. Professor Hobson of the Kearney High School and Dr. H. C. Olsen, director of the Teachers Training School spoke at a later meeting. Professor Hobson presented a plan for a general science course and Dr. Olsen discussed the teacher profession from the viewpoint of both the teacher and the school board.

The officers for the organization are: president, Carroll Anderson; vice president, Arthur Arehart; secretary and treasurer, Martin Nelson; program committee, Seth Compton, Mrs. Wigton and Mildred Myer.





Forensic League.

The Forensic League was organized in 1922 in response to the rising need for support to the teams during the debate season. The one great purpose of the organization is the promotion of intercollegiate debating.

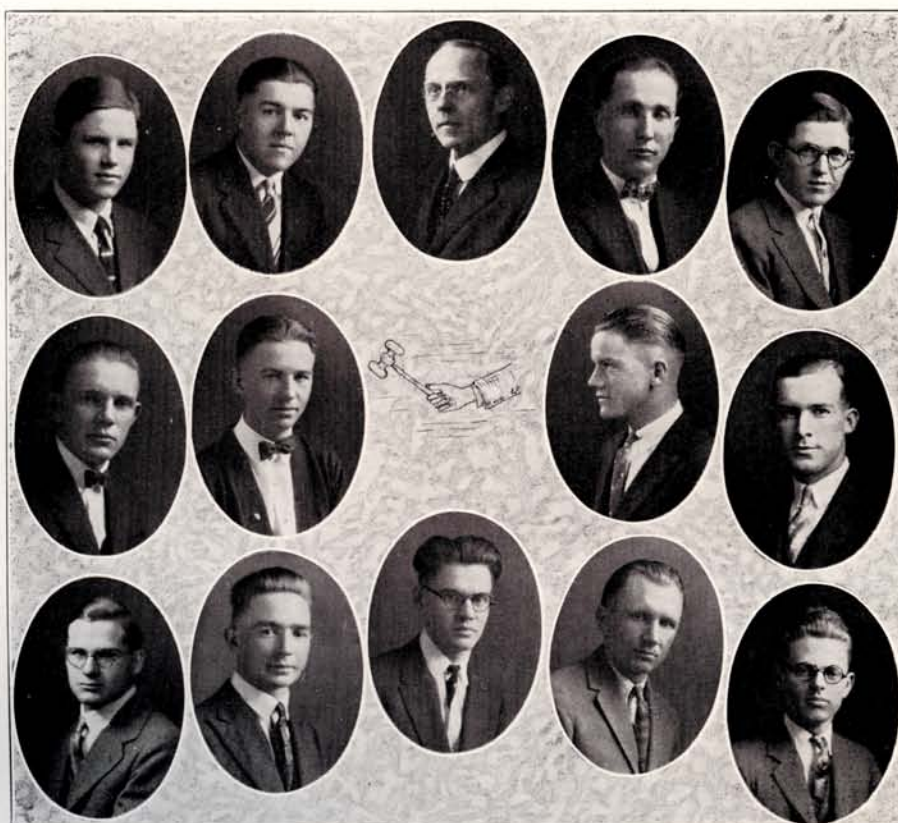
Members of the Aspasian and Emanon societies automatically became members of the Forensic League. From this nucleus officers were elected. Since that time the Orophelian literary society was organized and admitted to the league. Recently the local plan of organization has changed and the officers of the named societies take charge of the Forensic program, each for one quarter.

Opportunity is given each society to enter on a more or less extensive program. The programs this year have varied from mere social gatherings to the discussion of some very weighty topics. The state debate question, "Resolved: That the constitution of the United States should be amended in such a way as to give Congress power to regulate Child Labor," was the source of many interesting discussions. Student government was discussed pro and con. A few of the meetings have been entirely of a musical nature.

Miss Amie Gilbert attended a meeting of the Nebraska Forensic Association in Lincoln, early in the school year. At that meeting the state debate question was chosen and other problems discussed. In April Miss Ruby Bowen represented the league at the second association meeting of the year. At this meeting the officers for the year 1926 and 1927 were elected. The peace oratorical contest, which had formerly been managed by Wesleyan University, was taken over by the Forensic Association. The local contest was held May 6. The tryouts for the extemporaneous contest were also held at this time. The general topic for this contest was "Present tendencies in modern education."

These are just a few of the things Forensic League tries to do. Needless to say an organization with so worthy an aim and such an immense program is a strong link in the chain which connects the college with the outside world.





Top Row—Hanthorne, Hayden, Mr. A. L. Phillips, Alexander, Downing.
 Second Row—Compton, McConnell, Jackson, Hansen.
 Third Row—Allen Anderson, Elmer Anderson, Duke, Price, Thurman.

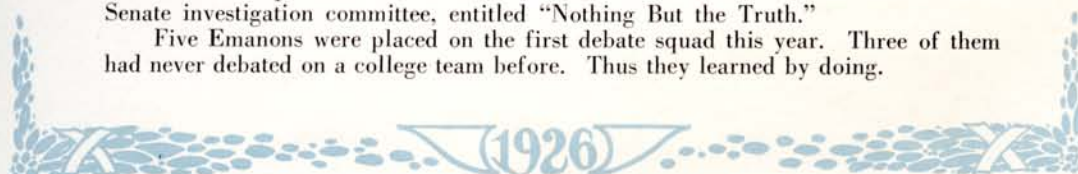
Emanon.

The Emanon Literary Society with the constructive criticism and helpful guidance of Professor A. L. Phillips has just finished another successful year.

This is the organization which takes hesitant, unexperienced college boys who have never faced an audience and by putting them through a process turns them out as orators or debaters who enjoy to stand before an audience and feel its emotions sway under their skillful oratory and ready command of English.

The past year under the direction of capable officers the society held a series of debates. New material was developed, which in one instance succeeded in defeating a team of experienced debaters composed of junior and senior college students. Immediately following these debates, came the practice on the Emanon Stunt for the Zip Club's Annual Show Down. It was a farce on the United States Senate investigation committee, entitled "Nothing But the Truth."

Five Emanons were placed on the first debate squad this year. Three of them had never debated on a college team before. Thus they learned by doing.





Top Row—Way, A. Brown, Banks, Saunders, A. Gilbert, I. Gilbert, Yetter, Day.
 Second Row—Matzke, Bohrer, Seybolt, Snyder, Miss Ludden, Davis, Seed, Pettijohn, Bowen.
 Third Row—McCaig, Elsie Van Horn, Ireland, Burchell, Avis Day, B. Brown, Mills, Predmore.

Aspasians.

The Aspasian Literary Society was organized in response to the need for a girl's organization which would promote social welfare and foster educational unity in the school. At no time during the history of the organization has it failed to uphold the highest standards of the institution.

Meetings are held regularly each week. The last meeting of each month however is given over to the Forensic League. This gives the three literary societies opportunity to communicate their ideas to each other.

This year the Aspasian group has become acquainted with many of Nebraska's prominent men and women whom they had known but little about.

They took very active parts in both the Christmas Festival and the Showdown. Later they pledged their support to the invitation high school basket ball tournament.

Aspasians are loyal and willing, always alert to the knock of opportunity.





Top Row—Rogers, Poole, Jackson, Bulin, Powers, Reinertson.
 Second Row—Fecht, Burges, Pense, Aden, Katherine Neptune, Lemkuhler, Borland, Pierce, Benson.
 Third Row—Macy, Fair, Hansen, Mason, Murrish, Zeilinger, Peterson, Ellingson.

Orophilians.

This society was founded in 1923 for the purpose of giving more students the opportunity to take part in extemporaneous speaking, and in literary activities in general.

It meets every Thursday evening at 7 o'clock. Interesting programs consisting of readings, music, games, speeches, debates and discussions on current topics are presented. Much of the credit for the success of our meetings and the excellent co-operation of the members in the various activities is due our sponsor, Miss Katherine Neptune, who is always ready and willing to help as well as advise.

The officers for this year have been:

First Quarter	Second Quarter	Third Quarter.
President—Myra Poole—Verla Murrish—Emilie Berges.		
Vice Pres.—Helen Bulin—Gladys Cronk—Matilde Hansen.		
Secretary—Edith Peterson—Myrtle Pierce—Della Benson.		
Treasurer—Velma Lemkuhler—Velma Lemkuhler—Velma Lemkuhler.		





Top Row—H. Morrow, McConnell, A. Gilbert, M. Yoder.
 Second Row—Matt Wigton, Mr. A. L. Phillips, Dr. Ralph Noyer, Mr. John Matthews, K. Jackson.
 Third Row—Alexander, Bowen, Lancaster, Wheelock.

Pi Kappa Delta.

The Zeta Chapter of Pi Kappa Delta was installed in the Nebraska State Teachers College at Kearney in 1924. Only those who have won honors in debate or oratory are eligible for membership, thus there can never be a large number of active members in any one college.

Nebraska Zeta includes three faculty members; Mr. A. L. Phillips, Mr. John Matthews and Dr. Ralph Noyer, all belonging to the order of instruction.

The past year, Nebraska Zeta sponsored the largest debate tryout held in Kearney College since the war.

Miss Margaret Yoder was sent as delegate to the national meeting which was held in Estes Park. At the national meeting it was decided to inaugurate regional meetings which will alternate with the national meetings making each meet every two years.

The officers are: president, Homer McConnell; vice-president, Kermit Jackson; secretary, Amie Gilbert.





Top Row—Allyn Hanthorne, John Lancaster, Homer McConnell, Margaret Yoder, Kermit Jackson.
Bottom Row—Nolan Alexander, Ruby Bowen, Amie Gilbert, Jack Wheelock, Kenneth Downing.

Debate.

The following people represented Kearney in Intercollegiate debate this year:

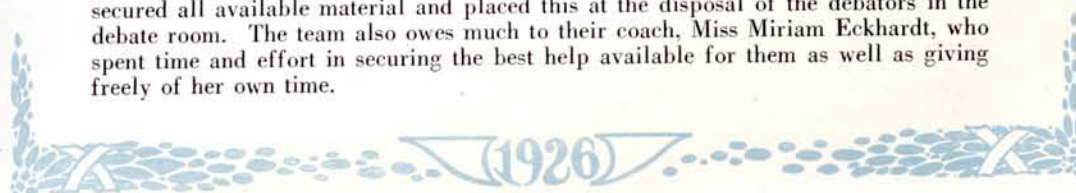
Affirmative—Jack Wheelock, Amie Gilbert, Ruby Bowen, Nolan Alexander, Kenneth Downing.

Negative—Homer McConnell, Margaret Yoder, John Lancaster, Kermit Jackson, Allyn Hanthorne.

The debates were held in the month of March, beginning on March 4, and continuing every Thursday and Friday night throughout the month until March 23. During that time Kearney College met the following colleges in either dual or triangular debate: Omaha University, Cotner, Peru, Midland, Wesleyan, Doane, Central, Grand Island, York and Hastings.

The question used this year was the National Pi Kappa Delta question: Resolved that the United States Constitution should be amended so as to give Congress the power to regulate Child Labor.

A word of appreciation is due Miss Anna V. Jennings, college librarian, who secured all available material and placed this at the disposal of the debaters in the debate room. The team also owes much to their coach, Miss Miriam Eckhardt, who spent time and effort in securing the best help available for them as well as giving freely of her own time.





Top Row—Ella Mellberg, President; Professor John Matthews, Sponsor; Reubsamen; Rouch.
 Second Row—Johnson, Margaret Mackley, Roy Commings, Vice President; Irma Antrim, Secretary.
 Third Row—Runge, Crumb, Robinson, Mabel Predmore, Treasurer.

English Reformers.

MOTTO—*Think twice before we speak. We can if we will.*

Early last fall the members of the English Three class felt the need of some systematic plan for aiding each other in the improvement of both their oral and their written English. After a number of discussions they decided to band themselves into a little club, the purpose of which would be making of good English a habit. They finally decided to organize a little club to carry out this purpose. The English Reformers is the outcome of their efforts.

Early in November of 1925 they adopted some rules and regulations of procedure and formulated the Ten Commandments of English. They adopted a poem, "The Song of Big Things," as the club's incentive and proceeded to be governed by the spirit of the Commandments and they became a very helpful and lively organization.

Next year they hope to grow and expand into one of the active and permanent clubs of the Kearney State Teachers College.





Top Row—Murrish, Myrtle Davis, Way, McConnell, Miss Jennie Conrad, Mr. C. N. Anderson, Snyder, Allen Anderson, Meyers.

Second Row—Conton, Baird, Williams, Shirley, Grierson, Cordie Peterson, Marcy, Bird, Alta Van Horn, Meents.

Third Row—Seed, Dawson, Webb, Matzke, Marjorie Smith, Runyan, Young, Donahoo, Avis Day.

History Club.

The History Club was organized in 1911 by Prof. C. N. Anderson for the purpose of fostering interest in pioneer life, and for collecting material related to Nebraska history.

The club continued as an organization until 1913, then other interests carried the students away from history. Through the efforts of Prof. C. N. Anderson and Miss Jennie Conrad the club was reorganized in September 1924.

This years program has been entirely devoted to the study of the life on the trails and in the forts and ranch houses throughout our state. Valuable sources of the history of Fort Kearney have come into possession of the club. These are reproductions of drawings of the buildings of the fort, and the blue prints of the government buildings of the old fort. Old pioneers in and about Kearney have contributed other reminiscences of the early days.

In convocation on April 30, the club presented historical tales of Indians and descriptions of the trail life.





Top Row—Reiley, Morrow, Pollard, Burt, Hayden, Herring.
 Second Row—Fecht, Steadman, Brink, Reddy, Dineen, L. Brown, Nelson, E. Johnson, Kittle.
 Third Row—Householder, E. Jones, Welsh, Donnell, Wilson, P. Anderson, Crumb, Lemkuhler, K. Jackson.
 Fourth Row—Mulvany, Sunderland, F. Burrows, Saunders, Predmore, Miss Ethel Hill, Belle Cameron,
 Hunnell, Shanklin, Burman.
 Fifth Row—Zeilinger, Curley, Keens, Foster, Haase, Lowe, Day, Marjorie Martin, J. Lynch, McCan.
 Sixth Row—N. Lynch, Metzger, Pettijohn, Wheelock, M. Macklin, E. Machley.

La Sociedad Espanola.

For several years students and visitors at the college may have noticed posters announcing meetings of "La Sociedad Espanola." If they have any knowledge of the beautiful language of Spain they will have little difficulty in recognizing it to be "The Spanish Club." But though they may have guessed the name, they have interpreted but the smallest part of that which the poster really foretells. To those belonging to La Sociedad Espanola a meeting signifies many things. These meetings, although held only once a month, are crowded with all the fun, entertainment and sociability that can be crowded into one short hour. Spanish plays, songs, and dramatizations are mingled with music, games and refreshments.

La Sociedad Espanola is sponsored by Miss Ethel Hill, of the Modern Language Department, but is governed and managed by students. Those belonging feel that much benefit, as well as pleasure, is derived from each meeting and they leave feeling some of the true warmth of feeling that is attributed the people of that far away sunny land.





Top Row—Deaver, Kuska, Morrison, Reinertson, Miss Alma Hsieh, sponsor; Yetter, Reubman, Yost.
 Second Row—Eird, Irene Williams, Hildar Lundberg, Hartwell, Pearl Lundberg, Merle Lundberg,
 Macklin, Easterly, Aden, Oxer.
 Third Row—Bair, Jarmin, Thompson, D. Williams, Eileen Lynch, Hawthorne, Seed.

Le Cercle Francais.

Le Cercle Francais was organized in 1914 to supplement the class room work by giving the students additional opportunity for practice in using French in a practical way, and also as a social feature of the work of the department.

The club meets once each month at which time a business meeting is held, followed by an interesting program the purpose of which is to secure a better understanding of the French people. With understanding comes an appreciation for their manners and customs and adds interest and background to the work. For the programs, subjects are chosen which are not taken up in the regular class work or which need further emphasis; such as, French music, history of French literature, painting, sculpture, architecture, and a study of the lives of French Patriots. The social feature of the meeting consists of French songs and games and refreshments.

The officers for the year are: president, Dorothy Williams; vice president, Marie Lundberg; secretary, Milrae Lundberg; treasurer, Sadie Morrison.



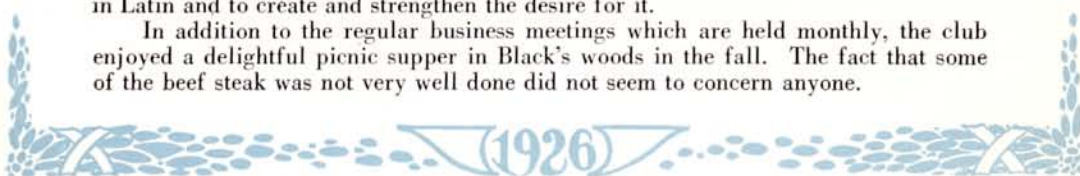


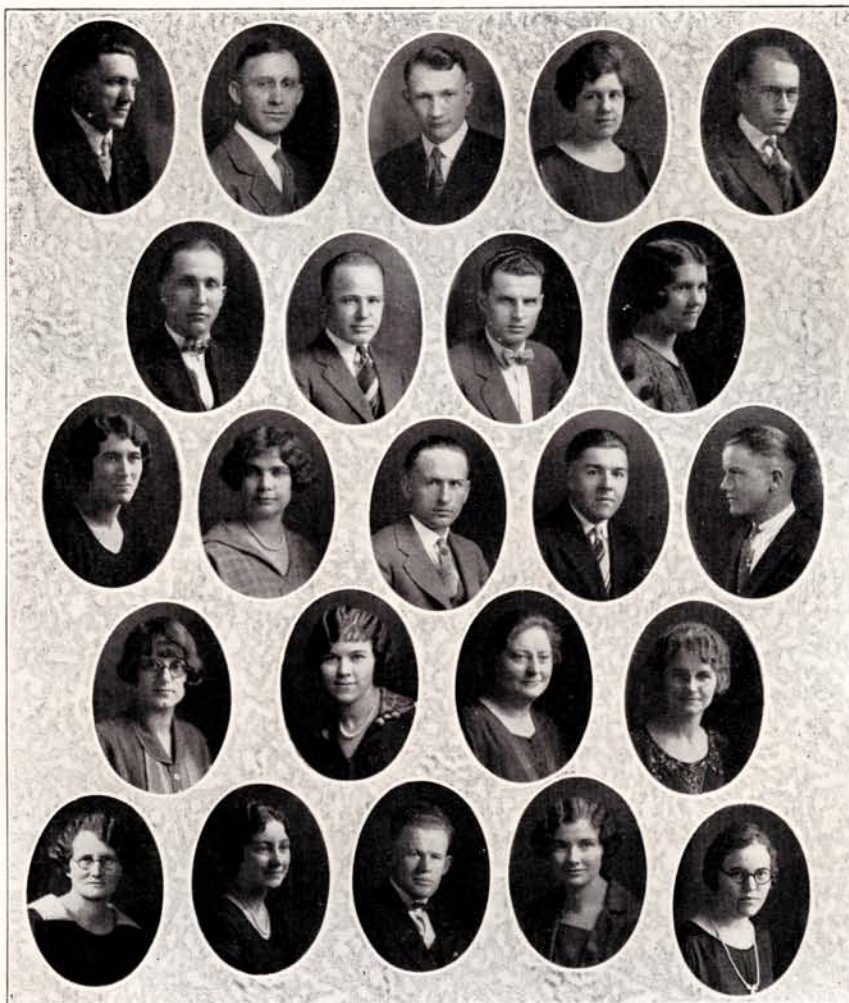
Top Row—Banks, Hendrickson, Miss Edith Rundle, Mastin, R. Aden, F. Albrecht.
 Second Row—Boyle, Brodrick, G. Carpenter, F. Carpenter, Compton.
 Third Row—Davis, Dodendori, Imm, Roy Nelson.
 Fourth Row—Nichols, Reinertson, Rose, Seybolt, Skelton.
 Fifth Row—Soward, M. Thomas, E. VanHorn, A. VanHorn, Wach, Webb.

Latin Club.

The Latin Club has been an active organization in the college for many years. It has a membership of twenty-five students who work to accomplish something worth while in the classical field. The purpose of the club is to stimulate interest in Latin and to create and strengthen the desire for it.

In addition to the regular business meetings which are held monthly, the club enjoyed a delightful picnic supper in Black's woods in the fall. The fact that some of the beef steak was not very well done did not seem to concern anyone.

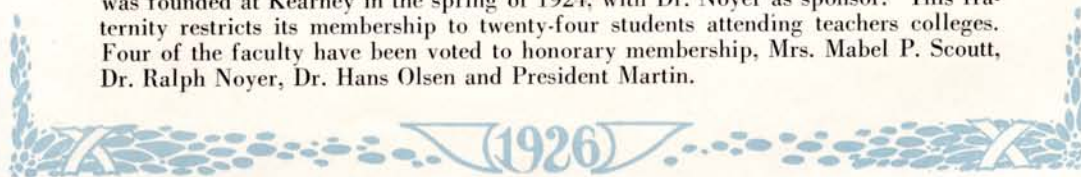




Top Row—Martin Nelson, Dr. Olsen, Dr. Noyer, Doyle, Carroll Anderson.
 Second Row—Alexander, Archart, Best, Burrows.
 Third Row—A. Gilbert, Gillette, Hanzal, Hayden, K. Jackson.
 Fourth Row—Marguerite Martin, Mastin, Poole, Saunders.
 Fifth Row—Marjorie Smith, Snyder, O. Swanson, Timson, Williams.

Xi Phi.

In order to recognize scholarship and promote leadership within the Junior and Senior Classes of the college the Gamma Chapter of the Xi Phi National Fraternity was founded at Kearney in the spring of 1924, with Dr. Noyer as sponsor. This fraternity restricts its membership to twenty-four students attending teachers colleges. Four of the faculty have been voted to honorary membership, Mrs. Mabel P. Scoutt, Dr. Ralph Noyer, Dr. Hans Olsen and President Martin.





Top Row—Irene Williams, A. Brown, Gilham, Panek, Gingaback, Overturff, Grube, Easterly, Gantin.
 Second Row—Youngquist, Grabill, F. Arnold, Pierson, R. Davis, Homan, E. Davis, Mrs. Hanzal.
 Third Row—Eileen Lunch, E. Arnold, Krewson, Burman, Stryson, Kincaid, Boyle, Meyers.
 Fourth Row—M. Anderson, H. Anderson, Camp, Hill, Pennington, Rickerson, Foster.

Girls Glee Club.

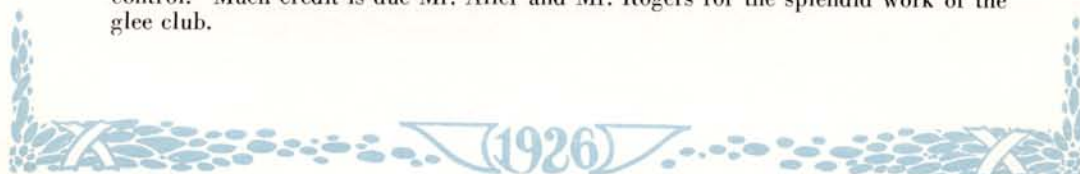
The Girls' Glee Club has been a very strong, active organization in Kearney College for the year of 1925 and '26. It was managed chiefly by its three officers; president, Katherine Boyle; librarian, Beryl Pearson; manager, Hazel Panek. Its first undertaking was a trip to Hastings in October where a program was broadcast from station KFKX. Convocation programs were given at two different times by the joint glee clubs.

In February the girls journeyed to Clay Center, Nebr., where another program was broadcast from station KMMJ. Later they sang before the Wilcox Parent-Teacher Association and similar programs were given at Hildreth and Newark. The Women's Club of Kearney and also the high school were entertained by the Club during the season.

Special music was given at the Methodist Church and later at the laying of the corner stone for the new Teachers College training school building.

During the first and second quarter Miss Erna Camp, of Cozad, was accompanist for the girls club. For the third quarter two accompanists assisted in the concerts, Miss Beryl Pearson, of Kearney, and Miss Mildred Burman, of Kearney. The climax of their work was the assistance in the production of the opera, "The Mikado."

During the first two quarters the glee club was under the direction of Professor George H. Aller. Mr. Aller was compelled to give up the strenuous work and take a vacation on account of his health and Professor R. C. Rogers stepped in and took control. Much credit is due Mr. Aller and Mr. Rogers for the splendid work of the glee club.





Top Row—Wheelock, Eurt, French, F. Albrecht, Post, Moore, M. Nelson.
 Second Row—Roush, Nicholas, Baker, Arehart, D. Ricker, Wigton.
 Third Row—Luse, H. Albrecht, Danielson, L. Ricker, Hutchins, Horsham.

Mens Glee Club.

The Men's Glee Club composed of twenty-four trained voices made more than twenty out of town appearances during the past season.

During the first quarter this organization, under the direction of Professor Geo. H. Aller, made a tour through the western part of the state, with Broadwater as the principal point. The club appeared on the Lyceum course at Broadwater and on the trip they sang in thirteen different towns.

On February fifth and sixth they broadcast from Lincoln and Omaha respectively. After the concerts from station KFAB at Lincoln and station WOAW at Omaha a great number of letters were received from various parts of the world expressing appreciation of the musical program.

The last trip of the season was to Edison where the club appeared in an evening concert. In connection with the Ladies' Glee Club they appeared in concert at Hildreth a few days later.

"The Mikado," a Gilbert and Sullivan operetta was the big undertaking of the season. Under the direction of Professor R. C. Rogers the Men's and Ladies' Glee Clubs presented the operetta in a very creditable manner, receiving appreciation and praise from all who were fortunate enough to hear it.

The glee clubs, orchestra, band and other musical organizations of Kearney College have gone far toward showing that our school has a department of music ranking the equal of any school or university in the state.





ORCHESTRA.





Orchestra.

One of the outstanding organizations of the college the past year has been the College Orchestra under the direction of Professor R. C. Rogers. The orchestra, organized at the beginning of the school year, is well balanced and consists of thirty-five pieces. The marked progress of this organization was noticeable in the two Symphony Concerts given, one at the close of the first and the second at the close of the second quarter. These concerts were highly appreciated by the students and residents of Kearney.

During the third quarter the orchestra took a prominent part in the activities of the school. It played the accompaniment to the opera "Mikado," presented by the Boys' and Girls' Glee Clubs and also furnished the music for the May Fete given by the Physical Training Department of the College. The music, although of an entirely different nature from that of the previous quarters, was played with the same degree of excellence as were the Symphony Concerts.

This organization has proved to be popular and has been called upon many times during the year for concerts. It has appeared several times on programs given at the affiliated schools. The members of the local P. E. O. Chapter, realizing the ability of the orchestra to render a worth while program, asked that the orchestra give a half hour concert at the opening meeting of the State P. E. O. convention held at Kearney in the spring.

The orchestra has broadcast programs from station KFKX at Hastings at different times, and they have received letters from many parts of the world, expressing appreciation for the splendid programs given.

The Band.

The Kearney State Teachers College band was originally organized under the leadership of Professor B. H. Patterson. It has each year been a prominent factor in the activities of the college.

This year the organization was transferred to the able guidance of Professor R. C. Rogers who has increased the number of pieces in the band and otherwise aided the development of the band.

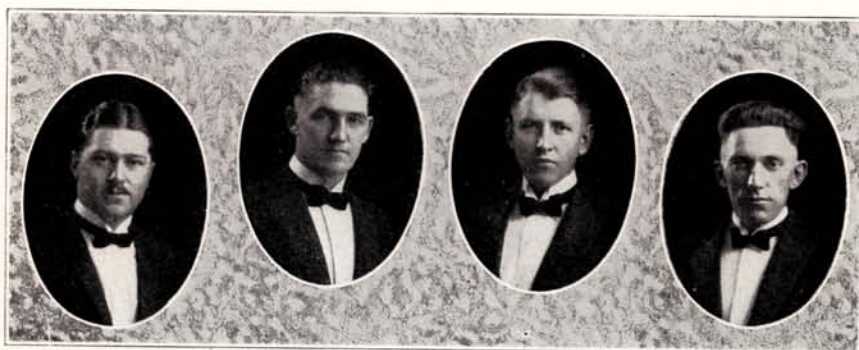
During the football and basketball seasons the band was very much in demand and it did some very creditable work at the various games. It made trips with the teams to other places and played at all contests at home. The organization had charge of a convocation program during the second quarter which was very much appreciated by the students and faculty.





THE BAND





Quartette.

Klyte Burt	First Tenor
William Nicholas	Second Tenor
Wayne Danielson	Baritone
Martin Nelson	Bass

PROF. GEO. H. ALLER—*Director.*

MISS MARJORIE MILTZ—*Accompanist.*

The College Quartette, organized in 1925 by Prof. Geo. H. Aller and assisted by Miss Marjorie Miltz, has developed into an important college organization. They have assisted in Glee Club concerts and college and community programs; also have broadcast from Hastings, Lincoln and Omaha. They have appeared in concerts at Mason City, Holdrege, Axtell, Alda, Glenwood, Elwood, Edison and North Platte. Their success as entertainers is evinced by the many calls from different communities. Concerts will be given at Miller, Axtell and Hazard before the season closes.





Top Row—Amy Brown, Irene Williams, Hodgson, R. Rienerston, Poole, Florence Peterson, Elaine Peterson, Morrison.
 Second Row—Reese, Mills, Eunice Young, Mrs. Hull, Hinkson, Pearson, Foster.
 Third Row—Dora Pennington, Rickerson, Grace Pennington, Signer, Panek, Coyner, A. Van Horn.

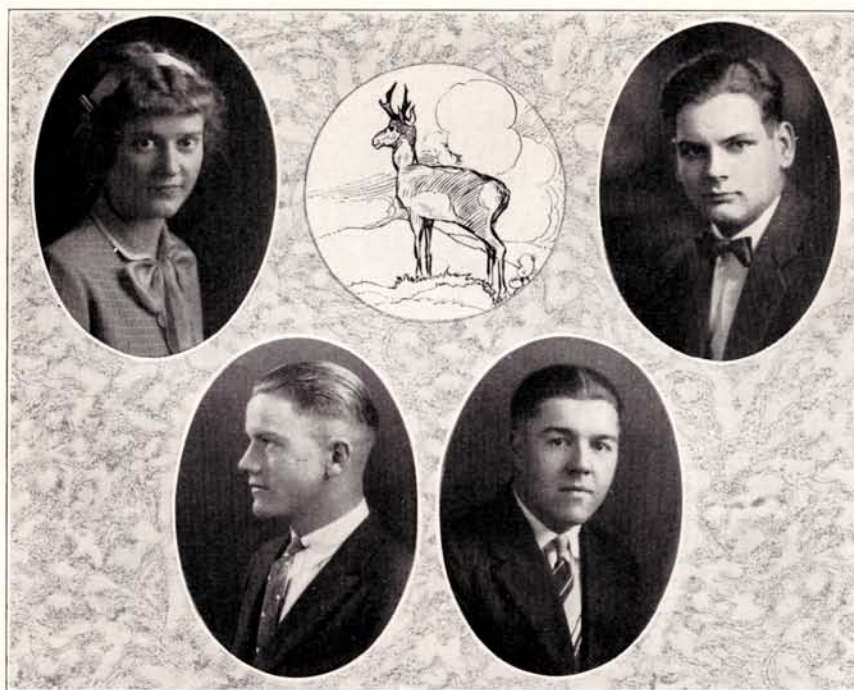
B Natural Club.

The B Natural Club is an organization composed of the students in the college who have taken work in the Piano department. It was organized early in the first quarter 1925 with Mrs. Hull of the music department sponsoring the organization.

Once each month the club meets and makes a study of some phase of music with relation to the piano or with the study of composition of music or the composers. The latter part of each program consists of piano selections by members of the club. It is intended that each member of the club shall play at least once before the other members during the year. After playing before an audience of this kind it is less difficult to play before a larger and more critical audience, and some have played in convocation.

The whole aim of the organization is to encourage the appreciation of good music and the study and practice of producing good music. It makes it possible for the students to be natural when playing, discussing or listening to good music.





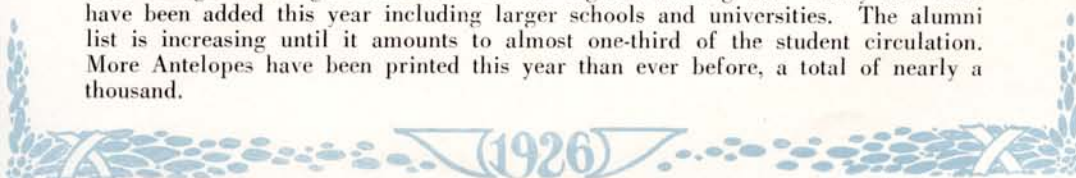
The Antelope.

MARGARET YODER	Editor
HOMER MORROW	Associate Editor
KERMIT JACKSON	Business Manager
HAROLD HAYDEN	Typist

The Antelope, Kearney's student publication, advancing from an 11x16 inch sheet to a ten gally edition has completed the fifteenth year of its existence. Based on the contingent fund, the paper devotes most of its space to school news and articles written by the college students. The paper has grown with the school, stands for it, and is at the service of the students and faculty.

During the past year the Antelope has attempted to encourage free speech and unbiased opinion among the students. Both sides of important questions and problems have been printed in the sheet and the student opinion column has been open to all, and many have taken advantage of it. Three new columns have been added to the paper, all edited by students and all representing original work, the Cantalope, Caustic Comment, and the Antelope Tracks.

The Antelope has a constantly growing exchange list. This year over a hundred colleges and high schools are on the regular mailing list. Many new ones have been added this year including larger schools and universities. The alumni list is increasing until it amounts to almost one-third of the student circulation. More Antelopes have been printed this year than ever before, a total of nearly a thousand.





Academy of Science and Mathematics.

The Academy of Science and Mathematics is one of the largest organizations in the Kearney State Teachers College. It was organized March 3, 1915 for the purpose of creating and promoting an intelligent interest in science and mathematics and for keeping the students up to date in current and scientific research. Its members, both active and associate, include the students recommended from the following departments; Biology, Earth Science, Home Economics, Mathematics, and Physical Science with the faculty members from these respective departments.

The monthly programs deal with some phase of science and are furnished either by the members of the different departments or by outside talent. The resume below will give some idea of the nature of the programs:

Harriet Burrows prepared a paper on "Can Tuberculosis be Cured," John Bean on "Trees in Kearney," Marguerite Martin on "Microorganisms" and Clinton Gitchell on the "Life of Pasteur." Merle Pierce gave an account of his hike from Kearney to Frisco.

Raymond Hanzal talked on "History of Mathematics." Gerald Humbert explained the use of the "Slide Rule" in Mathematics.

Julius Schneider discussed "Current Topics in Science." Martin Johnson gave us some demonstrations with the Radio and its latest inventions. We are indebted to Wayne Danielson for several good discussions; one on "Wonders of Coal Tar," another on the gas plant and its operation. At another time we were highly entertained by some chemical tricks, which the magician declared were easy if you knew how.

Professor Mercer discussed the weather and the meaning of the Sun spots.

Carrol Anderson prepared a paper on "Evolution" which was highly entertaining as well as instructive. Dr. Smith from the State Tuberculosis Hospital spent one evening with us discussing tuberculosis and its causes.





Top Row—Burt, Hayden, Jackson, Thurman. Second Row—Van Lueven, Horton, Mrs. Wigton, Pettyjohn, Jacobson, Uridell, E. Anderson, Morris, Carpenter, Hopwood, Wujek, Hanzal, Swanson, Danielson, McCall, E. VanHorn. Third Row—Elmer Anderson, Capps, Nicholas, Paine, Pierce, H. Albrecht, Mulvancy, L. Albrecht. Fourth Row—H. Burrows, Day, Hansen, Gillette, Miss Crisp, Mr. Sutton, Mr. Mercer, Mr. Pate, Mrs. Webster, Mr. Engleman, Miss Ludden, Miss Hanthorn. Fifth Row—Eggleston, Grabbill, Banks, Swift, Freeland, C. Peterson, A. VanHorn, Poole, Morrison, Way, Burges, Waite, Imm. Sixth Row—Harris, M. Thomas, Sheldon, Benson, M. Anderson, Jordan, Cook, Martin, Wach, Overturf, Powers, Mrs. Pettyjohn. Seventh Row—Timson, Bean, Compton, Croissant, P. Anderson, Humbert, Hanthorn, Staley, Price.





Top Row—Toll, Post, C. Cox, M. Nelson, Reed, Lindberg, R. Lidgard, Best, Pollard.
 Second Row—Mr. Otto Olsen, H. Lidgard, Capps, Evans, Cox, Fecht, O. Nelson, Horstman, Mr. Fryklund.
 Third Row—Crusant, Waldman, Swanson, Carskadon, Miller, Arehart, Vogt, Rider, Schmidt.
 Fourth Row—Baker, Riley, Hutchins, Pounds, Nicholas, Roger Nelson, Luse, Harden, Johnson.
 Fifth Row—Eck, Brown, Wintermute, Hopwood, Roy Nelson.

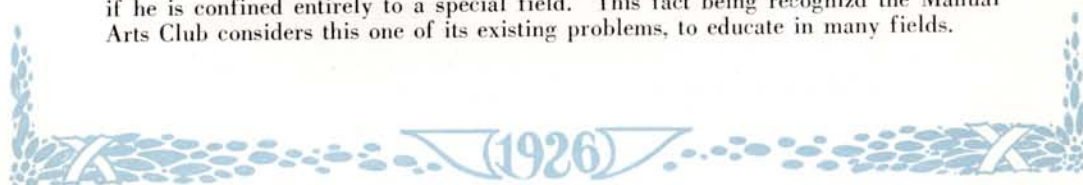
Manual Arts Club.

The Manual Arts Club, as its name implies, is one of the auxiliaries of the department of industrial education. The aim in this department as in other departments, is primarily teacher training. The aim of the club, however, is to assist in the promotion of the general interests of the student from the social point of view as well as from the strict utilitarian view.

To accomplish this the social side of man's nature is not overlooked. Good fellowship gatherings are held occasionally when the organization, which is composed of forty members, meets to enjoy a banquet. Speakers from the industries as well as from the school are invited to speak at these gatherings. These speakers do not necessarily represent any one field of endeavor.

The constitution calls for the promotion of general educational aims rather than the special. A student need not be majoring in industrial education in order to become a member, he needs only show a reasonable interest in the promotion of industrial education. The officers, sponsors and charter members of this organization are continually emphasizing the general aims of education. Other school activities must not be neglected by the club members.

Although education may be specialized, it is always a joint process which requires co-operative forces of the special with the general field. One is not educated if he is confined entirely to a special field. This fact being recognized the Manual Arts Club considers this one of its existing problems, to educate in many fields.





Top Row—Soward, Bell.
 Second Row—Denton, Jacobsen, B. Nelson, Mr. Hale, Clayton Anderson, Sandstrom, Burton, Gilland.
 Third Row—G. Carpenter, Mrs. Skinner, E. Anderson, Ireland, Mrs. Sutton, Wigton, Nicklin, A. Seybolt, Fredrickson.
 Fourth Row—McKenzie, Lockman, Mr. Patterson, Loomis, Harbottle, D. Williams, G. Buck, Alvera Peterson.

Commercial Club.

The Commercial Club of K. S. T. C. was organized for the purpose of obtaining a practical, first hand knowledge of modern, progressive business methods. From its beginning in February 1926, the club has received the co-operation of prominent Kearney business men. Mr. George Burgert, vice-president of the City National Bank, gave the club an inspiring address on the opportunities awaiting the commercial graduate of today and the services demanded from him.

Superintendent R. V. Clark, of the State Industrial School, conducted the club through that institution, lecturing on every phase of its management from the dairy to the executive offices.

Mr. D. P. Rankin, manager of the Kearney Flour Mills, took the club through the mill, demonstrating the process of manufacture and giving much interesting information regarding business methods in both foreign and domestic trade. Mr. Rankin also took the club into a small factory where he manufactures steel driving belts and explained the process of obtaining and protecting patents and of putting a new product on the market.

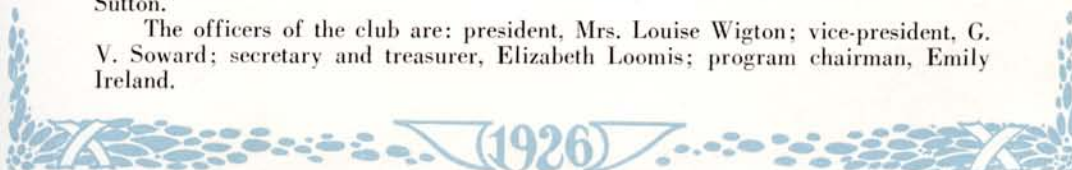
The teaching side of commercial work has been emphasized by Mr. Patterson who addressed the club, at its first meeting, on professionalism in business.

The social side has not been neglected. A lively picnic with an exciting ball game, a roaring camp-fire and a big picnic supper and other social affairs have helped care for this part of the club work.

Many interesting events are planned for the future, including an inspection trip through the various departments of the Post Office. Demonstrations of specialized modern office appliances are to be made by several public-spirited firms in the city.

The sponsors of the club are: B. H. Patterson, J. H. Hale, and Mrs. Ethel Craig Sutton.

The officers of the club are: president, Mrs. Louise Wigton; vice-president, G. V. Soward; secretary and treasurer, Elizabeth Loomis; program chairman, Emily Ireland.





Top Row—Professor Fulmer, Huber, Pettijohn, Downing, Haught.
 Second Row—Carcaskadon, Best, Reilly, Waldman.
 Third Row—Hendrickson, R. Reed, Capps, Clyde Cox, Martin Nelson.
 Fourth Row—Bowker, H. Swanson, Pollard, Carl Cox, H. Lidgard.

K Club.

The K Club is an organization composed of all the men in the school who have been awarded a "K" in athletics. These men are participants in every activity which tends to make school life at the college more profitable and pleasant for all students.

The organization is pulling for better athletics, better sportsmanship, better knowledge of athletics, and higher scholarship. The "K" Club conducts both the high school basketball tournament and the track and field meet.

The active members of the "K" Club are:

Leon Aunspaugh, '23—Football, Track
 Robert Best, '26—Football
 Wesley Bowker, '28—Football.
 Clarence Capps, '28—Football, Track
 Ihling Carskadon, '28—Football, Basketball.
 Carl Cox, '26—Football, Basketball, Track
 Clyde Cox, '27—Football, Basketball, Track
 Milton Debrie, '29—Football
 Kenneth Downing, '28—Track
 Gaylord Hendrickson, '29—Football
 Donald Holmes, '29—Football

Robert Huber, '28—Basketball
 Harold Lidgard, '28—Football
 Ward Minor, '28—Football
 Martin Nelson, '27—Football
 Hugh Pettijohn, '29—Basketball
 Robert Pollard, '28—Football, Basketball, Track
 George Reed, '27—Football
 Rex Reed, '28—Football
 Henry Reilly, '28—Football
 Harry Swanson, '29—Football
 Oscar Swanson, '26—Football
 John Waldman, '29—Football, Track





Top Row—Eggleston, Meents, Yost, Weston, Seed, Slack, Couton, Eileen Lynch, Pearson, M. Davis, Elaine Peterson, Temple.
 Second Row—I. Thomas, Benson, F. Peterson, Kuska, Yoe, Ethel Peterson, Yetter, Ruebsman, Lena Zehr, Reinerston, Gillette.
 Third Row—Hansen, Rosa Aden, Hefner, Young, G. Thomas, Ginganbach, Rask, Reed, Murrish, Butler, Panek.
 Fourth Row—Lockman, Lundberg, Morris, Erwin, Bruce, Miss Janet Pickens, Lowe, Hawthorne, Macklin, Quinton.

W. A. A.

The Woman's Athletic Association of the Kearney State Teachers College is an organization of all the girls of the school. It is sponsored by Miss Janet Pickens, head of the Woman's Physical Education Department. Its purpose is to arouse and stimulate interest and maintain a high physical efficiency in athletics, gymnastics and recreational work.

Basket ball, swimming, hiking, soccer, hockey, tennis and track are offered in season. The point system of the A. C. A. C. W. has been adopted.

This year the association is sponsoring a May Fete, a review of Nebraska history, in which approximately two hundred girls are participating.





Top Row—Nelson, McConnell, Capps, Paine, Clyde Cox, Morrow, Nicholas, French, East, Hayden, Alexander, Hutchins Arehart.
 Second Row—Downing, Harbottle, Humbert, Mulvanv, M. Cronk, I. Gilbert, Yoder, G. Thomas, G. Cronk, F. Miller.
 Third Row—K. Jackson, Anderson, Getty, Andrews, Miss Case, Hefner, I. Thomas, Metzger, Davis, Munson, Myers, A. Gilbert.

Zip Club.

The Zip Club of the Nebraska State Teachers College at Kearney was organized in 1924 and since that time has remained the foremost promoter of school spirit and enthusiasm for all intercollegiate contests.

The Zip Club participated in the Holiday Festival and sponsored the second annual Showdown. The Showdown and the Boner, which was given during the summer quarter, help to provide funds to buy awards for the teams representing the college in intercollegiate activities.

The aim of the Zip Club is to promote loyalty and school spirit and to co-operate at all times with the other school organizations. This organization is limited to forty members of which eleven are seniors, seven juniors, fourteen sophomores, two honorary, and the remaining are freshmen.

The club is very fortunate in having as its sponsor Miss Florence Case, Social Science critic of the training school who has been a faithful worker and a loyal sponsor.





Top Row—Kuska, Hinkson, Shirley, Bergstrom, Campbell, Yoe, C. Peterson, Fecht.
 Second Row—Benson, Maddox, Anna Olsson, Hartwell, Mason, Eocheuer, Erickson, Mecnts, Ebba Olson,
 Dineen, Andrews.
 Third Row—Miss Alma Holic, Eutherus, Robinson.

Camp Fire.

As the autumn twilight lowered,
 All their tasks and cares aside,
 Six and twenty maidens gathered;
 Gathered in their much loved tapee
 Camp Fire room of Kearney College.
 Bearing bundles large and heavy.
 Struck the trail when all assembled,
 Blazes made by La-quasi,
 Leading to the glowing camp fire.
 Trusty maidens, swift and silent,
 Brought refreshments warm and plenty.
 Sixteen maidens joined our Camp Fire
 Joined for love of Wohelo:
 Pledged to bring the fagots seven
 To the fire of Uncapapa.
 As the shadows deepened, lengthened,—
 Home fires lured them back to Kearney
 Thinking of their Uncapapa
 And their watchword of Wohelo.





Top Row—Florence Burrows, Erwin Getty, Mrs. Ida Rose Saunders.
 Second Row—Gerald Humbert, Harold Hayden.
 Third Row—Ruby Bowen, Mary Nichols, Ralph Moore, Nellie Sadler, Luna Homan, Ethel Smith.

Theatre Arts League.

The Theatre Arts League has spent a busy, but enjoyable year under the capable direction of Miss Miriam Eckhardt, sponsor. In September eleven new members were elected, bringing the number of active members up to thirty.

In addition to the regular bi-monthly meetings, the Theatre Arts League has held three successful social events. The first was the initiation of new members followed by refreshments at the Royal Chocolate Shoppe. During the second quarter a party in the Y. M. C. A. rooms furnished a pleasant evening. As is the custom in the league, the event of the spring term was a picnic. Such an outing always proves delightful.





Theatre Arts League.

Members of the league have presented two evenings of jolly entertainment during the year. November 20, three one-act plays were presented: "Best of All Ways" by Julia Whitley, "Evening Dress Indispensable" by Roland Pertwee, and "Cabbages" by Edward Staadt. "Evening Dress Indispensable" was presented as a number of the Orpheum the evening of the Holiday Festival. Despite the small stage and lack of proper stage setting, "The Best of All Ways" was successfully staged at the banquet of the Kearney Woman's Club. The members of this cast again gave the play in convocation. "Cabbages," the comedy in German dialect, was taken to Lowell and to Newark where it was presented before the Parent Teachers Associations. The truck rides to and from these schools proved entertaining and exciting for the cast members. Later this play was presented in convocation. On the evening of March 10, the three act comedy, "A Full House," was staged before a large audience. The quality of the acting in all the plays was especially good, due to the talent of the members of the casts and to the work of the director.

The Theatre Arts League takes pride in another of its achievements of the year. At the Annual Showdown the Theatre Arts League took first place with a short burlesque, "The Fatal Quest." The prize, a ten dollar gold piece, was returned to the Zip Club to help purchase sweaters for our "K" men. At the request of the Woman's League Council "The Fatal Quest" was presented at the reception given by the college women for the Kearney Woman's Club members.

First and Second Quarter Third Quarter

President—Mary Nichols—Luna Homan.
Vice-Pres.—Nellie Sadler—Kermit Jackson.
Secretary—Kermit Jackson—Ruby Bowne.
Treasurer—Robert Best—Harold Hayden.





The Rural Club.

The purpose of the Rural Club is to give teachers training in social service and leadership which is needed especially in the rural school and rural community. Actual practice in cultivating the ability of leadership is obtained in the regular meetings which are held at the first and third Tuesdays of each month. All of the meetings are of an educational nature. Programs are given by the students, members of the faculty and speakers from outside the college. In this way teachers in training may see what can be developed along the line of activities. Teachers go back to their work with renewed enthusiasm and zeal for socialized education and better community service.

The Rural Club has tried to add to the knowledge of its members and because of this it has grown rapidly and today is one of the largest and most active of the school organizations.

May it live on!

	<i>First Quarter</i>	<i>Second Quarter</i>	<i>Third Quarter</i>
President	Adeline Mason	Adeline Mason	Irma Broomhall
Vice President	Irma Broomhall	Irma Broomhall	
Secretary	Ebba Olson	Ebba Olson	Ebba Olson
Treasurer	Eunice Arnold	Eunice Arnold	Eunice Arnold

SPONSORS—*Mr. Powell and Mrs. Powell.*





Top Row—Paul Extrom, Edith Johnson, Mrs. Florence Grimm, Mrs. Elliott.
Lower Row—Lucy Taft, Esther Musser, Miss Florence Grimba.

Affiliated Schools.

Kearney College boasts an unique distinction in its system of affiliated rural schools. Rural schools affiliated with teachers colleges have long been common as devices for teacher training purposes, but only at Kearney has the affiliated system been made to work as much as eleven months in the year.

In the six village and rural schools (Glenwood, Riverdale, Mack, Victor, Center and Newark) observation facilities and practice teaching opportunities are provided for the ever increasing number of registrants in rural courses. It is necessary, therefore, that these schools be under the constant supervision of the director of rural training. It is also inevitable that the teachers in these affiliated schools work with the college in the closest harmony. All of them are, or have been, students in the regular rural courses. Several of them are graduates of the two-year college course and all of them receive ten hours credit for the work they do under supervision and in the study center conferences, which meet as regular class exercises during the year.

So enthusiastic is the response of patrons to the affiliation scheme that Professor R. W. Powell, director of the Department of Rural Education, is beset with requests from other communities for similar affiliation. As rapidly as they can be integrated into the system, they are taken on, and in time are given full privileges of the department's careful supervision.

An annual Patron's Day, featuring the contests in every subject taught in the rural schools, is a traditional feature of the affiliated scheme. This year the contests on Friday, April 23, brought to Kearney College an enthusiastic throng of patrons and school children which taxed to the limit the hospitality and facilities afforded by the college gymnasium. On every hand expressions of patrons were heard to the effect that the advancement made by the children in the affiliated schools during the past two years was nothing short of extraordinary.





Laugh And The World Laughs With You.

While collecting material for this subject, I asked one fellow student what laughter was, and he replied: "I don't know exactly, I guess it's just grinning when you feel good." I decided to find out how Kearney students really felt toward the subject so I looked up several ideas of famous men on both sides of the question and started to investigate. I violated all the college rules by parking near a convenient radiator in the main hall and observing the students as they came and went.

Enter Miss Matilda Sour: Her head is high. She looks at everyone with a blank stare, as if unacquainted with everyone, grunts a sour "How-do-you-do" to a passing instructor and out-does the famous Children of Israel fleeing from Pharaoh, in getting through the crowd so that she won't have to speak or smile at anyone. Miss Matilda, is evidently a believer in Catullus when he said: "Nam risu inepto res ineptior nulla est," or "Nothing is sillier than silly laughter," and she so firmly believes in it that she is frightened for fear that if she did laugh someone would think she were silly. I haven't any remedy for persons of this sort, to me they are almost beyond aid of any kind, and the more you try to make them happy or smile, the more morose they get.

Enter Sally Sunshine: The outdoor sunshine and the spring weather seems to come right in the door with her. Immediately the students standing around recognize her and one after another greet her. She has a smile for everyone and everybody seems to know her. Sally is a staunch believer of John Wolcott who said: "Care to our coffin adds a nail, no doubt; and every Grin, so merry, draws one out."

The result of Sally's philosophy is that everyone likes her and is ready to serve her, or as the common term, she is popular.

Did you ever notice the student that laughed at everything? Did you ever see a fellow make his friend angry by laughing at him? Pope in his Epilogue to Satire says: "Laugh at your friends, and if your friends are sore, so much the better, you may laugh the more." Shakespeare in his famous Othello says: "They laugh that win."

Everybody likes the joyful student and everybody avoids the sulky, highbrow or timid one, who refuses to speak in the halls or on the campus. Ella Wheeler Wilcox in her famous "Solitude" says its better, I believe than it has ever been said by another:

Laugh and the world laughs with you,
Weep and you weep alone.
For this sad old earth must borrow its mirth,
It has troubles enough of its own.

—Margaret Yoder.

(An editorial in the Antelope of April twenty-third, Nineteen twenty-six.)





SPORTS



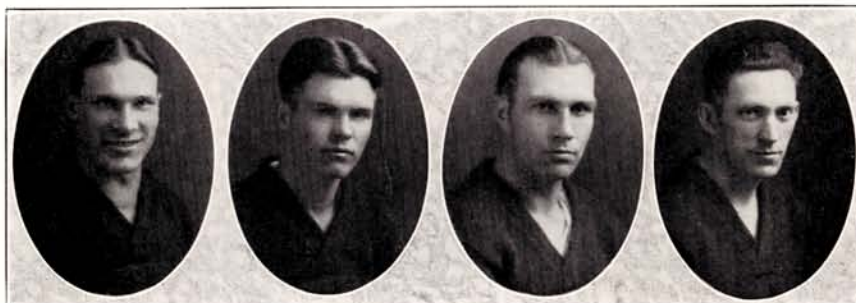
LEIGH POST
'29





COACH FRED R. FULMER.





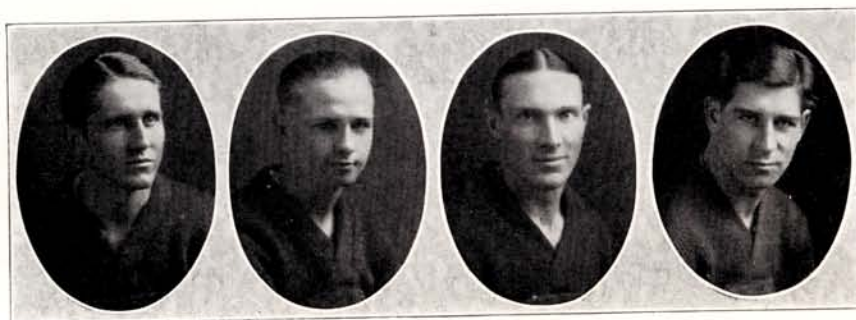
CAPT. CLYDE COX—Kenesaw, 185 lbs. Third year on the team. Has played center, tackle and end. He played the game and played it hard. No time out for him. Faithful to the last.

IHLING CARSKADON—Gothenburg, 155 lbs. Captain-elect. Second year on the team. Plays half and end. A fearless player and a sure tackler. We are confident of Brick's ability to lead the team and we are looking forward to see some real football next year.

REX REED—Stockville, 135 lbs. Fourth and last year. An all-state lineman for three years. Kearney's greatest. Captain in 1923. Always a source of encouragement to the team.

MARTIN NELSON—Kearney, 178 lbs. Fourth and last year on the firing line. Guard. Captain in 1921. Considered one of the hardest men to get through in the conference. Consistent and dependable.





ROBERT POLLARD—Farnam, 165 lbs. Second year on the team. Quarterback. A splendid punter and forward passer. Always plays the game hard.

HENRY REILLY—Kearney, 133 lbs. Second year on the team. End. One of the smallest ends in the College conference. Not handicapped by his size. A mighty good tackler.

CARL COX—Kenesaw, 177 lbs. Third and last year with the Antelopes. He played guard, end and fullback. An all-around athlete. Won letters in football, basketball and track in 1925.

LEON AUNSPAUGH—Gothenburg, 170 lbs. Second year on the team. Played tackle and halfback. A great interference runner and defensive player. A hard fighter.





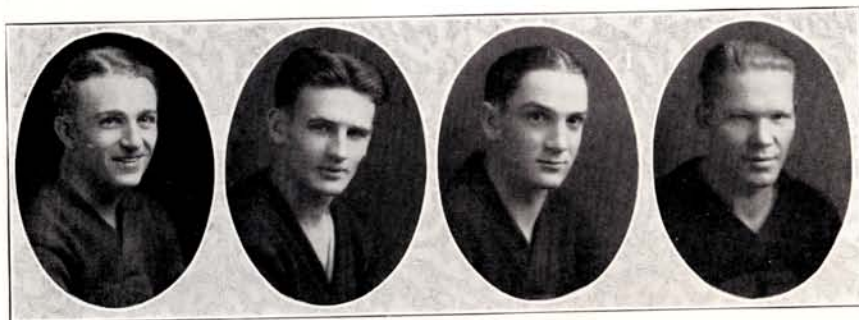
ROBERT BEST—Stockville, 170 lbs. First year on the team. Played guard. A conscientious player. A valuable man.

MILTON DE BRIE—Gibbon, 160 lbs. First year on the team. Played guard. A hard worker and dependable. He has all the qualities of a good football player.

CLARENCE CAPPS—Kearney, 185 lbs. First year on the team. Played end and guard. A good passer and defensive player. Discovered in the Colorado game. A valuable man.

GAILORD HENDRICKSON—Arcadia, 170 lbs. First year on the team. Center. A natural born center. We expect to see more of his work next year.





DONALD HOLMES—Gothenburg, 155 lbs. First year on the team, a halfback. Runs like a deer and is hard to stop. A fearless and hard player.

WARD MINOR—Kearney, 150 lbs. First year on the team. Played end. Good all-around player. Good on the receiving end of a forward pass. Watch out for him next year.

JOHN WALDMAN—Comstock, 145 lbs. First year on the team. A halfback. One of the "finds" of the year. Fast on his feet and with a little more experience he will be a whirlwind.

HARRY SWANSON—Gothenburg, 135 lbs. First year on the team. Played full-back. A mountain of strength. Was sure to make a hole in any line that he hit. Should make his mark next year.





Football Resume.

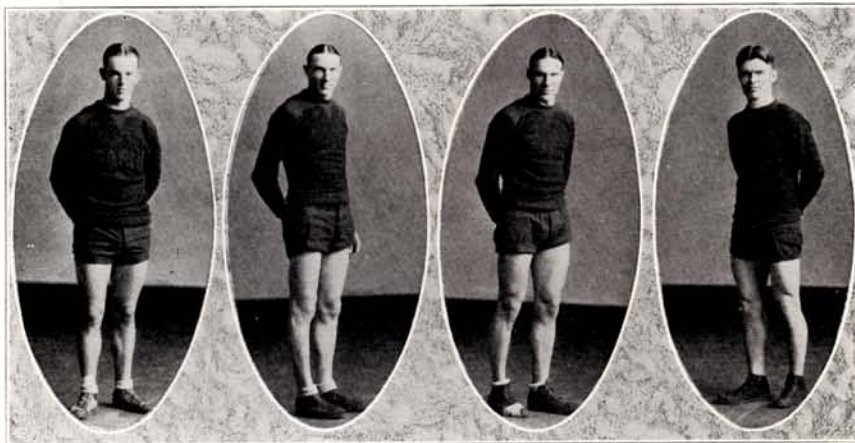
Kearney wound up the 1925 football season by playing Midland College on the home field.

Out of the seven conference games, Kearney men landed four. The first conference game was played at Central City. Kearney defeated the Centralians 35-0. The next game was with our old friend Peru. Of course we did not want to hurt their feelings so we let them beat us 20-0. Next came Hastings. We were not quite so liberal with them as we were with Peru. We let them win by a score of 6-0. We will all remember the day we went to Grand Island and saw Capps make that sensational run of 75 yards for a touchdown and how the rest of the team mowed down the Grand Island players which made the run possible. Well that was the day we beat Grand Island 13 to 6. The next Friday was Homecoming Day and that was the day we fought Doane College for 55 minutes and 30 seconds, and the score stood 0-0. Thirty seconds yet to fight. We were within striking distance of the goal that Doane was defending. There was just one thing to do. Brick Carskadon was called back. The ball was passed to Reilly who held it true and Brick's toe met the ball square and sent it straight between the goal posts, thirty yards away. It cleared the bar. The whistle blew while the ball was in the air and the game was over when the ball struck the ground. 3-0 in favor of Kearney. Brick was the hero of the day.

The Kearney team the next week went to Cotner and defeated them 12-6. The last game of the season was played on the home field on Turkey Day when we lost to Midland 6-0.

We opened athletic relationship with the University of Wyoming at Laramie and Colorado Teachers at Greeley. Kearney lost both games but gained valuable experience.





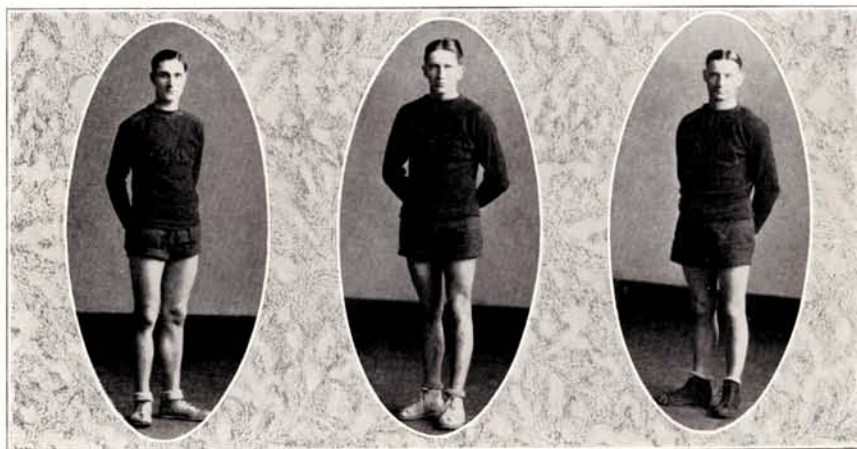
CAPT. HUBER—*Forward*.—A basketball player from the ground up. He has an uncanny ability to put the ball through the ring.

CARL COX—*Guard*.—A level headed, hard player. This is Carl's last year. We shall miss him next year when the squad lines up.

CLYDE COX —*Guard*.—One of Kearney's grand old players. He never quits and forwards have no love for him.

IRLING CARSKADON—*Forward*.—One who believes in team work. He is fast and reliable.





VERGIL HAUCHT—*Center*.—The tallest of all. He is a clean athlete, a good floor man and has a good eye.

ROBERT POLLARD—*Guard*.—Fight-fight-fight! His favorite poetry. He is a real athlete with a determined spirit.

GLEN HARDEN—*Guard*.—A hard reliable player. He has a fine personality and plenty of grit.





Basketball Resume.

The conference season opened January 13. We defeated Central College that day. The next week the Antelopes left on the annual trip to the eastern part of the state and Iowa. They defeated Midland and Omaha University. Tabor, after playing two extra periods, won from the Antelopes. This was not a conference game.

The Dana team at Blair, Nebraska, handed Kearney the first conference defeat of the year. Kearney next defeated Grand Island. Then York was taken into camp by the Antelopes. The next week Haught, our faithful center, became ill with the flu and had to be left home. Cotner had little trouble defeating the reorganized team. Peru the state champions, after a hard fight came out with only a seven point lead. York avenged the defeat handed them earlier in the season by the Antelopes.

The next week Cotner came to Kearney and after a hard fight won by a few points. Next Wayne defeated the Antelopes. The next week the Antelopes played their second game with Omaha University. It was the most outstanding game of the season. It showed what the Antelopes were capable of doing. You will all remember how the score stood at the end of the first half. Seventeen to two in favor of Omaha University, and how the Antelopes came back and in fifteen minutes tied the score. Never before on the Kearney floor had such a come-back been staged. When the game was over, Kearney was ahead. This game gave Kearney sixth place in the conference. We won seven and lost six conference games.





Central College	13	Kearney	28
Midland College	13		25
Dana College	27		15
Omaha Uni. (Extra period)	24		29
Grand Island College	23		32
York College	12		17
Cotner College	31		22
Peru Teachers	23		16
York College	25		22
Grand Island College	13		43
Cotner College	25		18
Wayne Teachers	30		21
Omaha University	24		27
	283		309





*Miss Photo
Kearney, Neb*

2-27-26

Winners and runners-up in each class. Annual high school basketball tournament.
 Lower Row—Gothenburg (Champs)—North Platte. Class A.
 Second Row—Pleasanton (Champs)—Litchfield. Class B.
 Top Row—Poole—Barr Junior High of G. I. (Champs). Class C.





TRACK, 1925.

Top Row—Leach, Nicholas, Pollard, Cox, Captain; Archart, Fulmer, (Coach)
Bottom Row—Eggle, Smith, Aunspaugh, Bennett, Troyer, Cox, Downing.

Track.

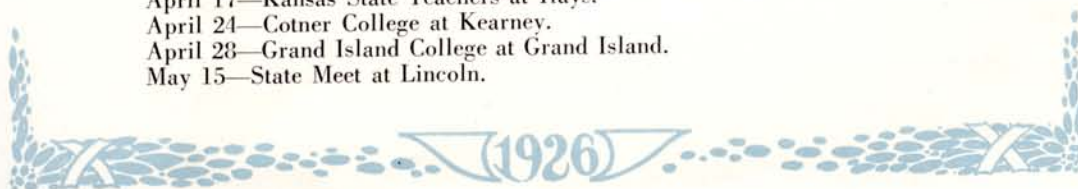
Track is the newest of major sports at Kearney College. Our first track team was organized in 1923, and since that time there has been a steady growth of interest in the sport. Nearly all previous records were broken in 1925. The largest number of men in the history of the sport reported for practice at the opening of the 1926 season and many records were broken before the season was half over. The college records at Kearney, made in Intercollegiate meets, including the first half of the 1926 season are as follows:

100 Yards—Roberts, 1924—10:4.
220 Yards—Roberts, 1924—23:4.
440 Yards—Roberts, 1924—56:4.
880 Yards—Clyde Cox, 1926—2:10.1.
Mile—Downing, 1925—5:5.
2 Mile—Downing, 1925—10:55:2.
High Hurdles—Pollard, 1926—18.
Low Hurdles—Burgert, 1923—27:1.

High Jump—Carl Cox, 1925—5ft 6 1-2in.
Broad Jump—Carl Cox, 1925—19ft 2 3-4in.
Discus—Capps, 1926—118ft 2in.
Javelin—Capps, 1926—145ft 4in.
Vault—Panek, 1925—10ft 7in.
Shot—Clyde Cox, 1925—38ft 4in.
Mile Relay—Archart, Troyer,
(1926) Waldman, Pollard—3:51:2.

THE ANTELOPES 1926 TRACK SCHEDULE.

April 9—Grand Island College at Kearney.
April 17—Kansas State Teachers at Hays.
April 24—Cotner College at Kearney.
April 28—Grand Island College at Grand Island.
May 15—State Meet at Lincoln.



W.S.T.C.

A black and white portrait of a young woman with short, dark, wavy hair, wearing a dark, short-sleeved dress. She is seated and looking slightly to her right, holding a book or paper in her lap.

Letah Doyle
First

A black and white profile portrait of a young woman with short, dark hair, wearing a dark, sleeveless dress with a floral corsage. She is looking down at a bouquet of flowers she is holding.

Amie Gilbert
Second

A black and white portrait of a young woman with short, dark hair and a headband, wearing a dark, sleeveless dress with a patterned waistband. She is standing and looking towards the camera, holding a book or paper.

Gladys Cronk
Third

W.S.T.C.



Julius Schneider
first



Homer McConnell
second



Bill Nicholas
third



Popularity Contest.

LETAH DOYLE

Miss Letah Doyle, in the last two years which she has been with us, has won a place in the heart of every student in K. S. T. C. She is always busy but never too busy to do something more if she can help somebody. She was an active worker in Xi Phi, Y. W. C. A. and the class organizations.

Miss Doyle has had experience in district deaconess work in the cities of the oil field district of the south, and plans upon going to India as a missionary and teacher after receiving her degree from K. S. T. C. Wherever she may go, she will always carry with her the best wishes of her classmates of K. S. T. C.

AMIE GILBERT

Amie Gilbert, of Arnold, was the choice of the second largest group of students for the most popular woman in college. Amie has been on the debate teams representing Kearney College the past two years and as secretary of the Zeta Pi Kappa Delta did all of the correspondence relating to intercollegiate debates the past season.

She has had an active part in Xi Phi, Zip Club, Pi Kappa Delta, Y. W. C. A., N. E. A., Aspasiens and class organizations. During her Junior year she was assistant to Mrs. Elliott, dean of women, and during her senior year she was manager of the Stexy. Amie receives her A. B. from Kearney in August 1926 and will again join the ranks of the teaching profession.

GLADYS CRONK

Gladys Cronk, of Los Angeles, California, was the choice of the third largest number of students for the most popular girl in college. Gladys won second place in the similar contest last year. Everybody knew "Gladie" for her sunny disposition, her determination to succeed, and her force of character. To know her is very much worth anyone's while. At the close of the second quarter Gladys received her two-year diploma and left school for her home in California where she is helping her father in his business. While in college she was ever active in the organizations. She belonged to Xi Phi, Zip Club, Aspasiens, Y. W. C. A. and class organizations.

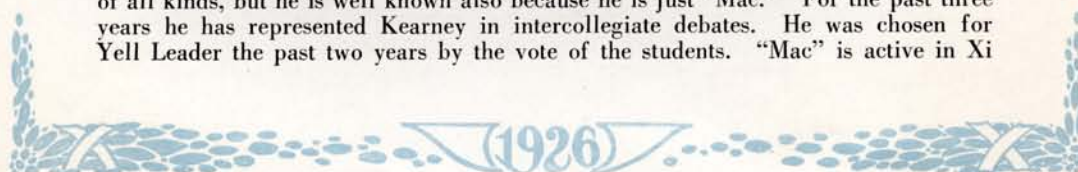
JULIUS SCHNEIDER

All students in Kearney College in 1925 and 1926 know Julius. Furthermore it is our prediction that before many years the range will have extended a great deal farther. We expect big things of him and feel sure we shall not be disappointed.

Julius was an active worker in Xi Phi, Y. M. C. A., Emanons, Zip Club, Academy of Science and Mathematics, and French Club. He completed his course in this school for his A. B. Degree at the close of the first quarter and left for Ames, Iowa, where he took up his work in science for his Master Degree.

HOMER MCCONNELL

Homer McConnell, a Junior in Kearney College, was choice of the second largest group of students. "Mac" is well known for his work in college activities of all kinds, but he is well known also because he is just "Mac." For the past three years he has represented Kearney in intercollegiate debates. He was chosen for Yell Leader the past two years by the vote of the students. "Mac" is active in Xi





Phi, Zip Club, Pi Kappa Delta, Emanons, Y. M. C. A., N. E. A. and class organizations. We'll hear more of Homer in his senior year.

WILLIAM NICHOLAS

William Nicholas, of Mason City, a junior in college was the choice of the third largest group of students for the most popular man in college. Bill is an active member of many of the organizations of the school. He was president of the Y. M. C. A. during the third quarter of 1925 and the first two quarters of 1926. While in this office Bill with the help of his cabinet built up one of the strongest organizations it has ever had in Kearney college. He is an active member of Zip Club, the Glee Club and is a member of the Male Quartet which gave concerts in different parts of the state in the spring of '26.

Who's Who.

As we look back over the records of the school and see the names of the many students who have completed their work here and gone out into the world, we find there many who have written their names on the hearts of the people with whom they work. We find them making a winning fight as they climb rung by rung up the ladder of experience. It would be impossible for us to list all of the successful persons who have graduated from Kearney college even if it were possible for us to set a standard by which to measure success. Some of those who have been out in the field and who are doing things which may be measured by a scale which we call success are:

Mr. George Ritchey, 1912, while a student in Kearney helped in the Agriculture department and became very much interested in that branch of work. After leaving here he taught in Technical High School in Omaha, then in Cornell College, Iowa. He then entered a Mission school at Indianapolis and was sent as a missionary to China. Here he is employed in Nanking University at Nanking, China, a school kept up by four churches, Methodist, Presbyterian, Baptist and Christian. For seven years he has been working in charge of the agriculture department, improving the types of wheat, corn, rice and other crops in an attempt to eliminate the awful famines of that country. He took a year's furlough in 1926.

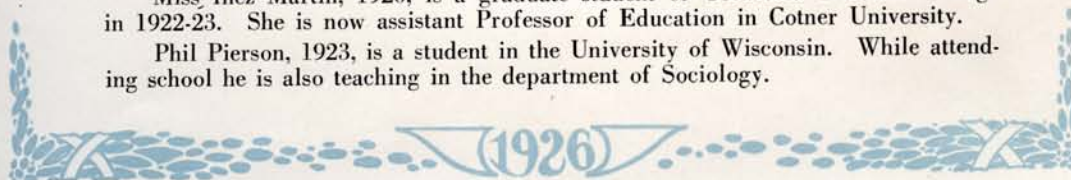
Miss Alice Hanthorne, 1909, after leaving school here taught in the Peru Normal School. She then became supervisor of the Kindergartens in Lincoln. For several years she has been Kindergarten Superintendent of the Cleveland City Schools. Miss Hanthorne published a book on primary teaching which has met with much favorable comment.

Dr. Mable Hammond, 1914, after leaving school became a missionary to China. She is now in charge of the McGaw hospital in Foo Chow, China.

Miss Martha McCutchen is a Methodist Missionary to China. She with another white woman has charge of a school on the island of Haitang where many Chinese students are learning things formerly unknown. Miss McCutchen was home on a year's furlough in 1926.

Miss Inez Martin, 1920, is a graduate student of Columbia Teachers College in 1922-23. She is now assistant Professor of Education in Cotner University.

Phil Pierson, 1923, is a student in the University of Wisconsin. While attending school he is also teaching in the department of Sociology.





Blue and Gold Staff.

GLADYS TIMSON

NOLAN ALEXANDER

KERMIT JACKSON

HARRIET BURROWS

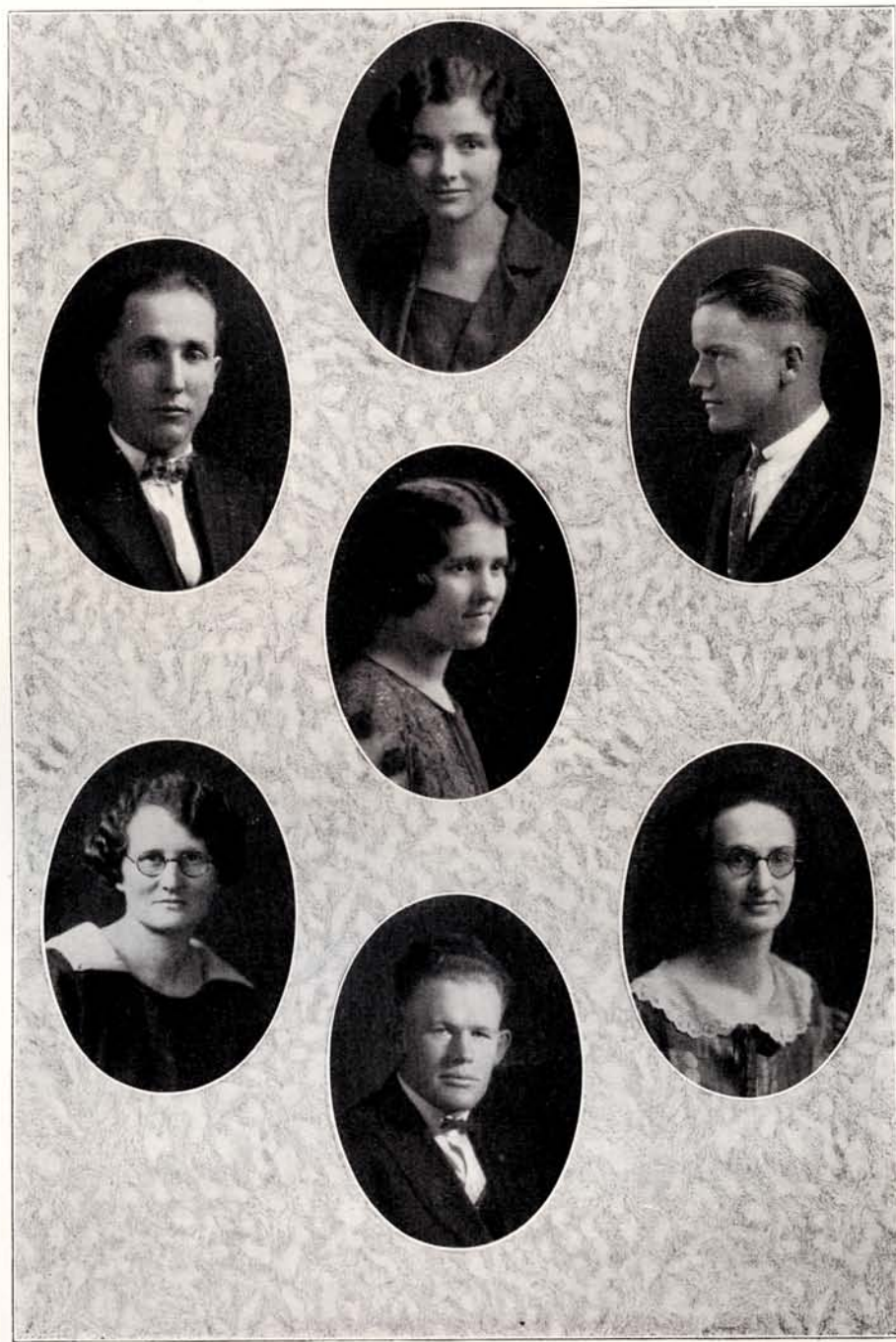
MARJORIE SMITH

ERMA POWERS

OSCAR SWANSON

HARRIET BURROWS	<i>Editor-in-Chief</i>
NOLAN ALEXANDER	<i>Associate Editor</i>
RALPH HANSEN	<i>Assistant</i>
AMIE GILBERT	<i>Assistant</i>
GLADYS TIMSON	<i>Business Manager</i>
KERMIT JACKSON	<i>Advertising Manager</i>
EVELYN BOLDT	<i>Assistant</i>
MARJORIE SMITH	<i>Snap and Joke Editor</i>
ROBERT BEST	<i>Assistant</i>
MYRA POOLE	<i>Assistant</i>
ERMA POWERS	<i>Art Editor</i>
LEIGH POST	<i>Assistant</i>
FREDA REDDY	<i>Assistant</i>
OSCAR SWANSON	<i>Athletic Editor</i>
HAZEL GILLETTE	<i>Girl's Athletic Editor</i>







Alumni Association.

The Alumni Association of the State Normal School and Teachers College at Kearney was organized in 1906. This association is designed to promote in every proper way the interests of the Normal School and Teachers College, and to foster among its members a sentiment of regard for one another and attachment to their alma mater.

All graduates are active members of the association. All former students may be associate members. Members of the faculty in active service are honorary members of the association.

The officers are a president, a vice president, a secretary and treasurer. The secretary and treasurer are permanent officers of the association.

Aside from the many accomplishments of a professional nature, two other worthy undertakings have been sponsored by the Alumni Association. First, the Alumni Journal published by the Senior Class of 1921. This record shows our alumni in all professions, and scattered to all parts of the world. Second, the Harriet Sutton Memorial Pipe Organ Fund. This growing fund will provide an organ for alma mater, an organ which every alumnus will be happy to hear.

For several years the Alumni Organization has sponsored a dinner and reunion of all alumni and friends of our alma mater attending the sectional meetings of the Nebraska State Teachers Association.

An annual meeting of the association occurs in June at Kearney. On this Home-Coming Day the classes graduating twenty years and ten years previous are special guests. The convocation hour is ours on this occasion. Later in the day as youngsters we contest in games. We greet friends in the hall with enthusiastic handclasps, we visit with the faculty in the class rooms, we chat during the afternoon tea, best of all we gather for the alumni dinner with its old songs, its jests and its memories.

Stexy.

The Stexy is one of the business organizations of the Kearney College. It consists of a Student Service bureau in which typing, poster making and other kinds of work is done. It is the aim to give employment to students of the college who are worthy and capable of doing efficient work, and at the same time to provide a place where persons desiring to have work done may come for service. The principal work done is typing and several stenographers are kept busy during their spare time.

In addition to the service in this line, the Stexy keeps in stock readings and one-act plays which are sold practically at the cost of copying. The students who desire work register with the manager and when a call comes for help a student is selected from the file who desires that type of work and who is able to work at the periods desired. During the past year it has been very efficiently managed by Miss Amie Gilbert.





Teachers Placing Bureau.

"A satisfactory teacher satisfactorily placed is the best advertisement for a State Teachers College," is the motto of our Teachers Placing Bureau. With this motto as its guide, the Teachers Placing Bureau exerts its best efforts properly to place every person trained by our alma mater.

The bureau seeks to keep in touch with the teaching positions in the state and to nominate suitable students or graduates for election to fill vacancies as these occur. It secures and compiles carefully prepared confidential evaluations of each registrant. These evaluations together with a detailed personal statement prepared by the candidate and his photograph are placed in the permanent files of the bureau. These permanent records are available at all times to interested employing school authorities seeking prospective teachers, principals and superintendents.

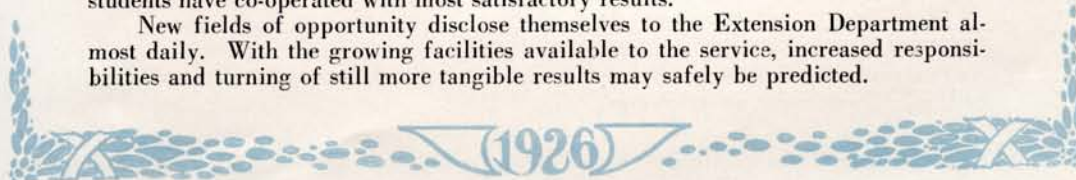
It is the policy of the Teachers Placing Bureau to give school authorities all the facts it has concerning each person being considered for a position. As a result of this policy, school authorities are coming to place greater confidence in the bureau and its work. As students and graduates go out into the field and render services comporting with the estimates of the bureau, its prestige and influence will grow and its capacity to serve authorities and students will increase.

Inasmuch as the bureau renders its services without cost to either employers or registrants, it seeks for its only reward the most sincere and whole-hearted co-operation of those it gives assistance.

Extension Department.

Beginning in September, 1921, with a typewriter table, one chair and a letter file and sixteen registrations for correspondence courses, the Extension Department has grown until it now points to a total of 3207 registrations. During the first six weeks, it was housed in a cloak room on the third floor, the room now used by the Home Economics Department as a storeroom. Today it "hangs out its shingle" at Room 221. Although the Extension Office still lacks complete equipment, its needs have been met at every turn by generous assistance from the administration office and by occasional contributions of furniture not needed by other departments. The original plan called for part-time extension service on the part of the director who, as need arose, enlisted students to help. Today the director gives full time to the department and has a full-time secretary whose every minute of the day is claimed by duties in the office. In addition to the presentation of correspondence and study center courses, (in themselves heavy responsibilities for any department) the extension service takes care of all the field work done by the college, mails out all the college advertising literature, arranges for lecture and lyceum service for school communities anywhere in Nebraska, makes available a popular consultative service, gathers material for public speakers, assists communities with home-talent dramatic programs and does a flourishing test and measurement business. To the Extension Department for the past two years has been entrusted management of the preliminary academic contests for high schools sponsored by the State University Extension Division. In this project almost the entire college Faculty and many of the students have co-operated with most satisfactory results.

New fields of opportunity disclose themselves to the Extension Department almost daily. With the growing facilities available to the service, increased responsibilities and turning of still more tangible results may safely be predicted.





The College Stock.

The College Stock Farm under the direct supervision of George E. Arnold, Custodian of buildings and grounds, has for its main purpose the furnishing of produce for the college dining hall in order to cut the cost of board for the students to the lowest possible figure.

Mr. Arnold states that the success of the farm this year is largely due to the consistent hard work of the two student helpers, Arthur Curtis of Anselmo, and Alfon Herring of Riverton.

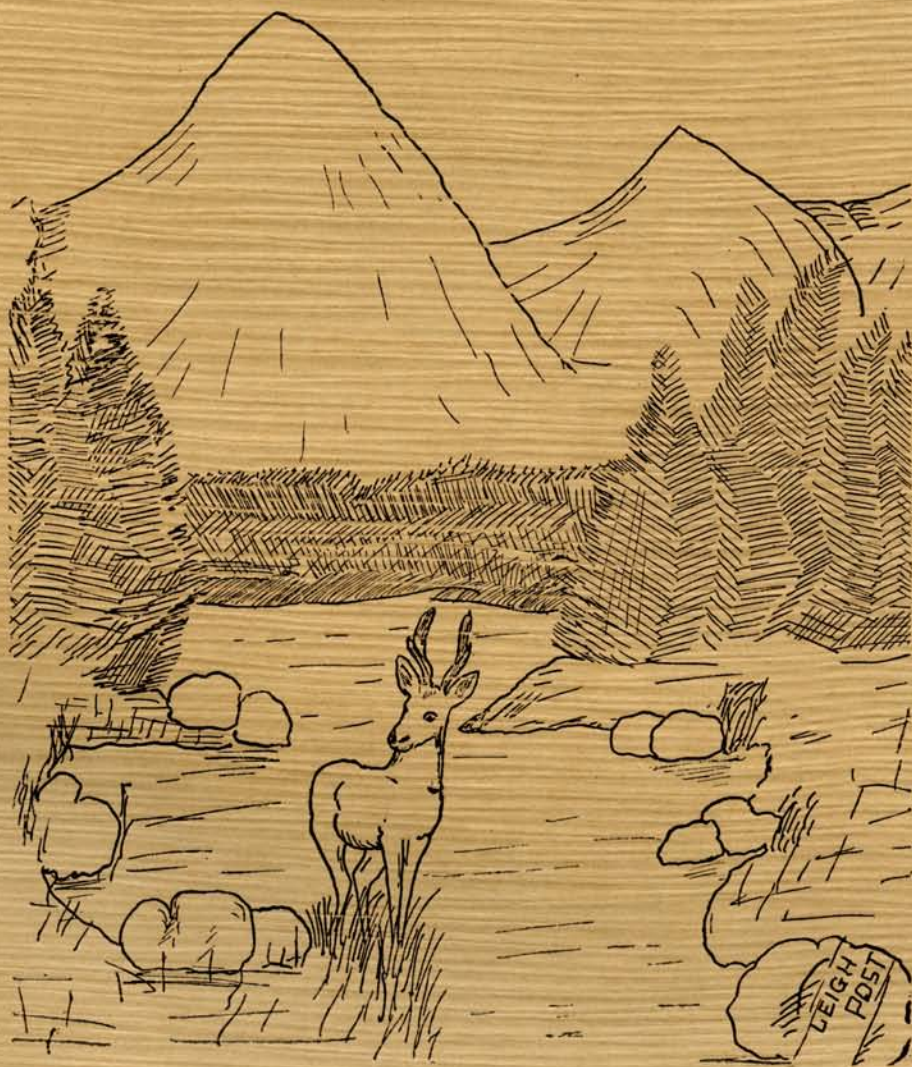
During the winter the feeding pens supplied the college dining hall with most of its meat. Seventeen head of cattle and fifteen head of hogs, all carrying an abundance of fat, were killed at intervals and it is believed that the quality of this meat has helped build trade at the College Dining Hall.

Milk, which is furnished by the dairy herd, is now being served three times a day at the College Dining Hall. The herd is headed by a registered sire, which took second prize at the Buffalo County Fair. There are seven Holstein cows in the herd, four of which are thoroughbreds, while the others, although not having papers, are well bred.

Next year promises to be a prosperous year as four acres of potatoes, one acre of garden and two acres of sweetcorn have already been planted. The twenty acres of alfalfa not only supplies the college farm but produces a surplus. Last year the surplus amounted to two hundred twenty-five dollars.

The farm is well improved with a modern cement cowbarn, large enough for the herd. Several smaller sheds and buildings furnish ample shelter for the stock. It is situated ideally for a feeding yard with a sloping surface and the fill of the lake forming a wind break on the north.





Friskings of the Antelopes



The Debus Bakery



The DEBUS BAKERY is equipped with the most modern machinery; improved formulas, determination to make a loaf that fulfills the most exacting demands.

When you order Debus Quality Bread from your grocer you can be confident of getting a superior quality loaf.

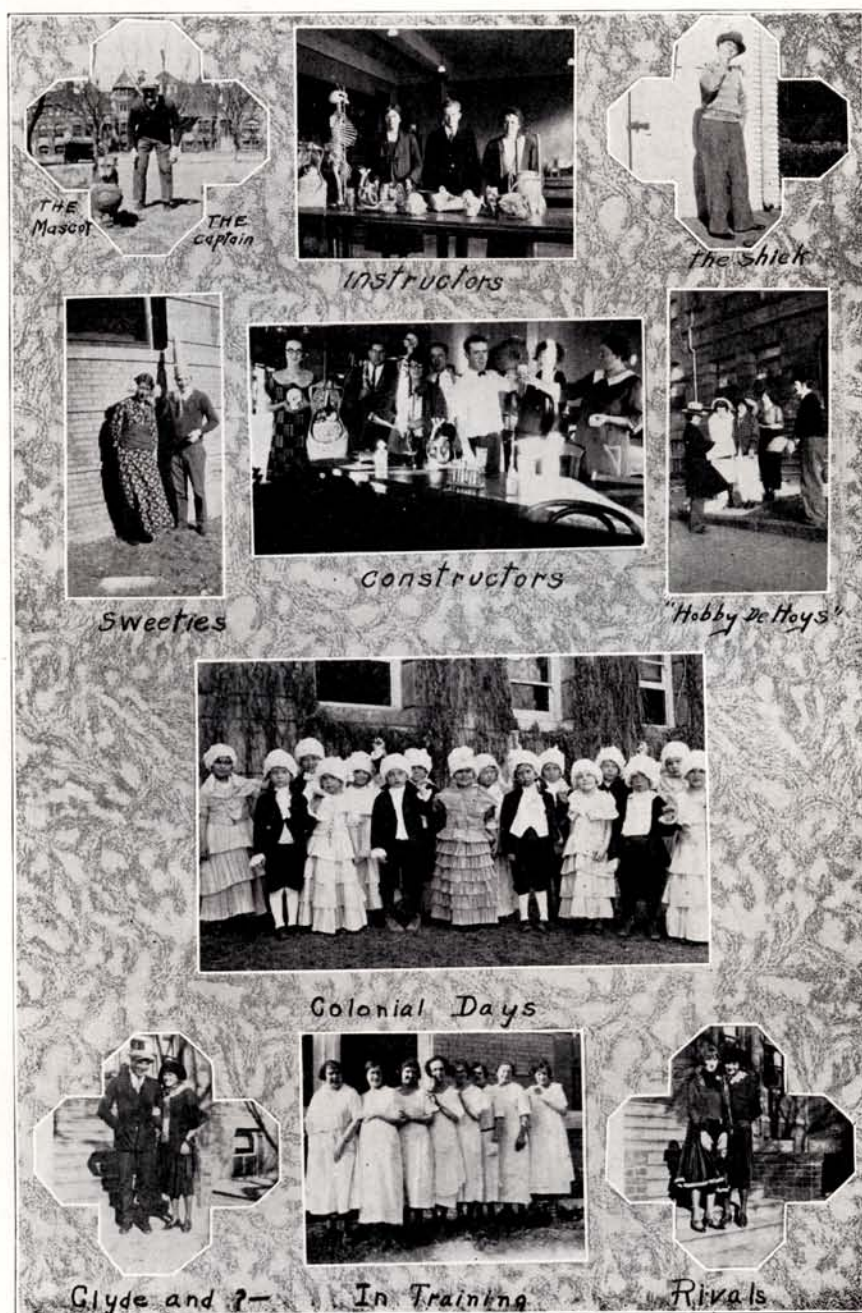
Visitors always Welcome.

Debus Baking Co.

Kearney and Hastings, Nebr.



KISTO



(1926)



Tollefsen-Elliott Lumber Company



LUMBER
AND
COAL

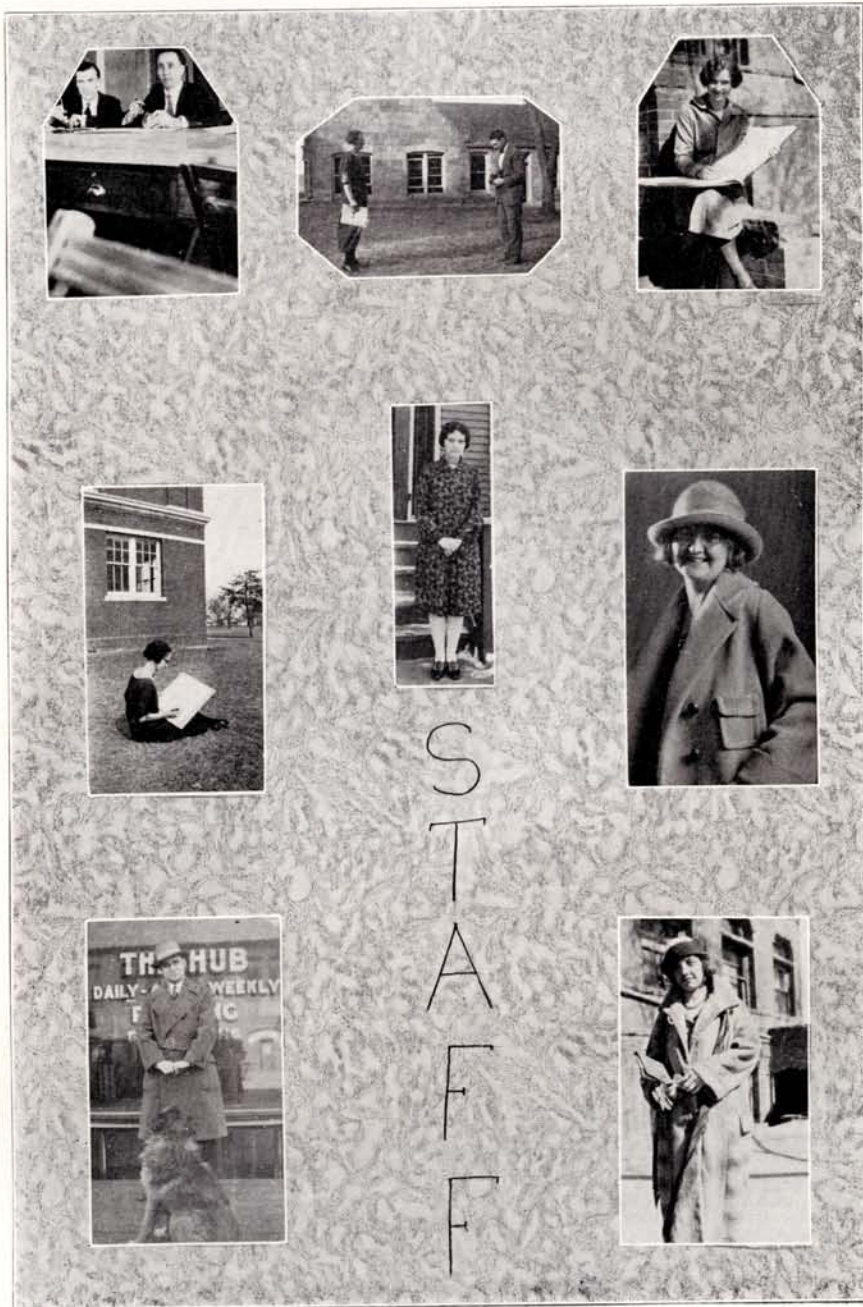


66 - Phone - 66

BUILDING MATERIAL OF ALL KINDS.



KISTO





THE OLD RELIABLE

City National Bank

OF

KEARNEY, NEBRASKA



Is always ready and willing to serve the Faculty and students of the Kearney State Teachers College, as well as their friends while they are in Kearney, or wherever they may be. This is a Bank of Service.

Dan Morris, President

Geo. Burgert, Vice President

Raymond H. Haase, Assistant Cashier

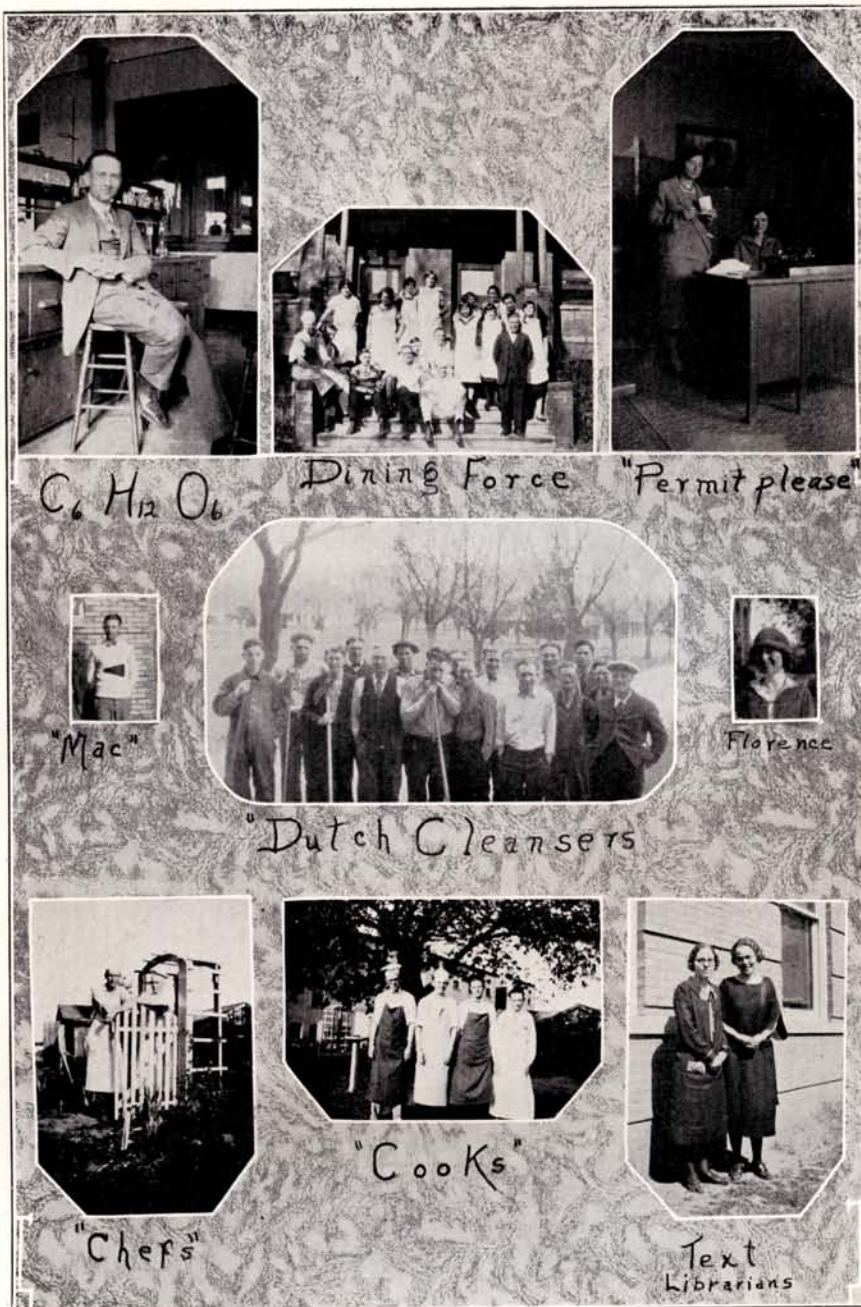
Dewey A. Kring, Assistant Cashier.

Frank Turner, Vice President

Elmer R. Gillespie, Cashier



W.S.T.C.





King's

Department Store

Est. 1898

Kearney, Nebr





S
E
N
I
O
R
S





READY-TO-WEAR - DRAPERIES - DRESS GOODS

Men's Furnishings

Domestics, Etc.

QUALITY

ASSORTMENT

COSMETICS
HOSIERY



NOTIONS
LINENS

VALUE

SERVICE

Luggage - Underwear - Art Dept. - Trimmings

"Gift Department"

Gifts for All Occasions—Birthdays, Social Affairs, Parties, Etc.

C. F. Bodinson Hardware Company

Service—Quality—Price

SPORTING GOODS

TELEPHONE No. 9



K.S.T.C.





Photographs
of
Distinction

Additional prints of the
photographs for this an-
nual may be obtained at
any time in the future
from

The Anderson Studio

14 West Twenty-second Street
Kearney, Nebraska



ASTC



Dramatic



No ghost



Athletic



The Ceremony



The Audience



Stet



Librarians



Miss Jennings' boys



Come work



Come rest



Twidale Shoe Co.

Kearney, Nebraska



"The Firm That Makes Piano Buying Easy."

KEARNEY

NEBRASKA



ASTC



"Pals"



Low Hurdling



Shot put



Archery



Arching



Happy



Discus



Discus Throwing



"yum-yum"



The Prices

That Are Uniformly Low—For Goods of National Reputation.

Do not fail to inspect our showing. We carry goods of well known brands
THAT SPELL SATISFACTION.

SILKS, RAYONS, WOOL AND COTTON GOODS
of All Description

COATS DRESSES MILLINERY
SILK HOSIERY and UNDERWEAR

Goods of National Reputation—Such Brands as Humming Bird, Onyx, Pointex Heels, Kayser and Munsingwear—Always Reliable.

Remember.—All we ask, is for you to give us a call and then we are perfectly willing for you to be the judge.

QUALITY

SERVICE

PRICE

The Empire Store

KEARNEY, NEBR.

JOHN W. PICKENS

We Did Your Kodak Finishing While You Were Here

Send it to us after you have gone. By sending direct to us you save time and money.

We will mail it to you any place in the world, and pay return postage. Price list mailed upon request.

Midwest Camera Shop

Kearney

2215 Central Ave.

Nebraska



KISTO



Study Hour—?



High Standard



Off for home!



"Seth"



"Sisters"



"Gerald"



"Chums"



"Twins"



Bandits



Tree Dweller



MILADY'S SHOP

Empress Theatre Building



Kayser Pointex Hosiery

McCallum Hosiery

Silk Lingerie

Scarfs

Ties

Novelties

Send Us the Things You Wore Last Season

Our cleaning department can do wonders with the things you probably never expect to wear again. Results are astonishing. But you can never appreciate the difference until you give us a trial.



Phone 260

22nd and Central

MEET YOUR FRIENDS AT

OHLSON & HENNING

YOUR DRUG STORE

Prescription Pharmacy

Teachers and Students School
Supplies

Fancy Lunches At Our
Fountain

HOME OF (BUTTER-KISTWICH)
SANDWICHES

COME TO OUR STORE



K.S.T.C.



The Fishels



The Long Boys



My dog and I



Science and Mathematics



Fountain of youth





RUTER'S---The Fashion

Spring just around the corner. And that means new and charming styles just ahead. Women may lose interest in fashion at other seasons of the year, but there's not a woman living who doesn't want a new dress when all nature dolls up in the spring of the year. Realizing this fundamental need of all humanity. Ruter's The Fashion, Ladies Outfitting Store, 2123 Central Ave. has made extensive preparations for pleasing its clientele in the 1926 spring season. With a view to matching the particular individualities of particular people, their buyers have selected models of the utmost variety and distinction. If you select your spring costume at Ruters, there will be no danger of your "meeting yourself" when you turn the corner. Nothing so upsets a woman of taste as to meet the duplicate of her gown on the street. Distinction is the watchword of Ruters' The Fashion and we are glad to recommend them to our readers.

RUTER'S---The Fashion

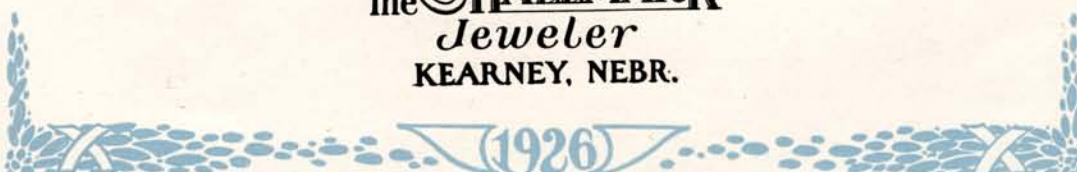
Our Watch and Jewelry Repairing Department

Is always on the job and we get your work out in the least possible time required to put out satisfactory work. Special lines selected for moderate priced gifts.

§ §

McKEE
The **HALLMARK**
Jeweler
KEARNEY, NEBR.

§ §





Home Talent



Alice Sit by the fire



Full House



Pinatone





Growth

"Growth" to a business , is the natural outcome of efficient service.

"Growth" to be healthy, is derived from a long experience with a planned procedure.

"Growth" to this great organization of stores has been gradual, continually reaching out to more and more communities.

"Growth" has resulted from being faithful to the people, serving them in their everyday needs so as to make their transactions profitable.

"Growth" from one Store in 1902 to 571 Stores twenty-three years later, is evident that it has been merited and while this is the record of this Nation-Wide Institution, it finds its greatest satisfaction in the belief that during all this time it has served well.

"Growth" for this great multiple of Stores is the result of that very hearty patronage given to the deserving.

"Growth" is to go on and on, for it is ever our aim to expand our service.

J.C. Penney Co.





Has Magnuson changed much in the years he's been away?
No, but he thinks he has.
How so?
Why, he is always talking about what a fool he used to be.

A ring on the hand is worth two on the phone.

Margurite M.—“The airplanes are getting more dangerous than ever.”
Harry H.—“Some one killed?”
Margurite M.—“No, but I see a chap got married in one yesterday.”

Mac—“Do you believe in signs and omens?”
Marg.—“Yes.”
Mac.—“Last night I dreamed you loved me. What does that mean?”
Marg.—“That you were dreaming.”

Mrs. E.—“Why do you so seldom go home on the twelve fifty train?”
Marg Y.—“Because it's ten to one if I catch it.”

Hayden.—“Did the doctor remove your appendix?”
Staley.—“It feels to me as if he removed my whole table of contents.”

REMEMBER

The
Royal
CHOCOLATE
SAOPPE
KEARNEY, NEBR.

LUNCHES

§ §

ICE CREAM

§ §

CANDY

Kearney's Greatest Shoe Values.



If you are looking for snappy styled shoes, go to Olson's

Novelties Receive Their First Showing With Us.

§ §

A. T. OLSON

The Leather Goods Store





Bjornstad's
Dry Cleaners and Tailors

Opera House Bldg. Phone Black 203

**COLLEGE
PANTORIUM**

9th Avenue and 25th St. Phone 241

25 Years
Experience

In Tailoring and Cleaning Business

**Blue Parrot
Cafe**

AND

CONFECTIONERY

§ §

There Are Others Larger
But None Better

§ §

TIM FITZGERALD

PROPRIETOR

Diamonds
Gruen Watches

§ §

Gildner's
DEPENDABLE JEWELERS
KEARNEY, NEB.

§ §

SILVERWARE

Gift Nook

**Joe Spire's
Cash Grocery**

**CUSHING BRAND
QUALITY
MERCHANDISE**

Wholesale and Retail
Bulk Coffees

Prompt Service On All
Mail Orders

Phone 187

Kearney, Nebr.



W.S.T.C.



Mrs. Engleman



Mrs. O. Olson



Mrs. Hade



J.S. Elliott



Mrs. Fryklund



Mrs. Fulmer



Mrs. Patterson



Mrs. Pate



Say it with Flowers

Member F. T. D.



GREENHOUSE—NURSERY—SEED STORE

Your Home Firm

Always Open

Greenhouse and Nursery, 2006 2nd Ave.

Phone 276

Lillian Lancaster—Why do divers eat more in the spring than in the summer?

A. Schaber—I'll bite.

Lillian—Because they are fond of the Spring board.

Lost: A fountain pen by a student full of ink.

Miss Eckhart—In the Senior play you have to eat a seven-course dinner in the second act.

Swanson—That's splendid. When do the rehearsals begin?

"Deak" Reed—What is the charge for this battery?

Prof. Sutton—One and one-half volts.

Deak—How much is that in American money?

Gilbert L. Carver

for

ALL KINDS OF
INSURANCE

See me about our Pension policy and make yourself independent in your declining years.

Agency for

Travelers Insurance Co.

Hartford, Conn.

The Largest Multiple Line Company
in the World

Kearney

Nebraska





Faculty Bosses



Mrs. Martin



Cy Black



Mrs. Mercer



Mrs. Philipps



Mrs. Anderson



Mrs. Noyer



Mr. Webster



Mr. Hull





Let Us Show You the
Latest in

Kincaid

Kimball

Clothes

MALLORY HATS

EMERY SHIRTS

"We Sell For Less"

— — —
V. C. CHASE CLOTH-
ING CO.

Kearney Laundry

— and —

Dry Cleaners

Send us your garments by parcel
post—We pay return postage.

Cleaning, Pressing
Repairing and Dyeing

Hats Cleaned and
Blocked

Family Washing Family
Style

Beyond Compare for Skill and Care.

Phone 117.

The Club House Stores

Are Here to Serve YOU. The Fulfillment at the Low-
est Possible Price of Your Every Need
is Our Ambition.

CLUB HOUSE CAFETERIA

"Largest and Best"

CLUB HOUSE GROCERY AND MARKET

"Staple and Fancy Groceries and Meats"

CLUB HOUSE SCHOOL AND NOTION STORE

"Everything in School Supplies."

CLUB HOUSE BEAUTY SHOP

"First Class Equipment and Service"

CLUB HOUSE BARBER SHOP

"The Sanitary Shop of Personal Service."

J. D. SAUNDERS, Proprietor

Opposite State Teachers College





Our Antelopes.

The Antelopes come from near and far
Seeking the haunts of our college.
They browse on the leaves of the library shelves
And drink at the fountain of knowledge.

The caretakers feed and groom them well,
And help them choose their trail,
And here they learn to follow it well,
For an Antelope must not fail.

They bask in the shade of leafy trees,
And mingle with many dear friends,
But soon they must follow their chosen path
And over the hill it wends.

It's not so much what you have gained at the end
Be it more or less than you hope,
It's the surefooted way you follow the trail
That proves you're an Antelope.

—Sadie Gouldie





Be Proud of Our Libraries

In the days of old when reading was done by candle light, libraries did not do a very flourishing business. It was only the extreme student who read. With the coming of the electric light, reading became a pleasure.

Kearney has taken advantage of this and today it boasts of two fine libraries containing nearly 30,000 volumes—a splendid record for a city of its size.

Few cities of its size in America can truthfully make such a boast.

The record of our libraries is an indication of the progressiveness of our citizens.

Central Power Company

"Gas and Electricity With Service"



KISTO



Grant Sisters



*Miss Miller
secretary*



*THE
Websters*



Rumors



Ethel and Minna



*Isles
Representatives*



*our
Editor*



We hike and yell



Puns and GUNS



FURNITURE NEWS

LIVING ROOM SUITES. DINING ROOM SUITES.

BED ROOM SUITES.

DAVENPORT TABLES. SPINET DESKS.

WINDSOR CHAIRS. CEDAR CHESTS.

GATE-LEG TABLES. ROCKERS.

BOOK CASES. MIRRORS.

MATTRESSES. LAMPS. RUGS.

Here We Have the Finest Assortment of Furniture
On Display.

WELCOME TO
BLUE & GOLD

Why Not Visit Us While You Are in Kearney?

ARRANGE TO TRADE YOUR OLD FURNITURE FOR NEW. WE WILL
BE GLAD TO GIVE YOU AN ESTIMATE.

Ask About Our Liberal Credit Terms.

NO MATTER WHERE YOU LIVE—WE DELIVER THE GOODS AND
PAY THE FREIGHT.

F. C. Scott & Son

PHONE 673

1/2 Block South Postoffice





Joe Bennett—How did you sleep last night?
Ralph Dailard—Not so good. I dreamed I was pitching pennies and I tossed all night.

Merle Pierce—What is your idea of the tightest man in school?
Bob Pollard—The guy who won't take a shower because it soaks you too much.

Of all the sad surprises
There's nothing to compare
With treading in the darkness
On a step that isn't there.

Harold Lidgard—I wish I could revise the alphabet.
Jeanette Carlson—Why, what would you do?
Harold—I'd put U and I closer together.

Mary Nichols—They tell me that you are doing settlement work.
Bob Best—Yes, my creditors finally cornered me.

Harold Kimball—Wouldn't you rather look at me than the stars?
Ruth Scoutt—Yes, if you were as far away as they are.

E. A. Eck

WALL PAPER - PAINTS - OILS

Window Glass - Windshields





When You Say It With
Flowers, Say It with Ours

Stryker's

Phone 86

Kearney, Nebr.

Senior girl:—You are such an oblig-
ing girl.

Freshman:—Thank you. Why do you
say that?

Senior girl:—You let your nose shine
so that all the other girls may look to
see if their own are shining.

When are girls going to use some
kind of roofing other than shingles?

H. A. Webbert

§ §

PRINTER

§ §

WEBBERT BUILDING

KEARNEY, NEBRASKA

A STRICTLY MODERN UP-TO-DATE
SHOP

Bahr's Barber Shop

AND

Beauty Parlor

L. F. BAHR, Proprietor.

YOUR BUSINESS APPRECIATED

§ §

PHONE RED 182 KEARNEY, NEBR.

MRS. B. B. PEIRCE'S

Needlecraft and
Hemstitching Shop

§ §

Stamped Needlework, Boil Proof

Threads, Ladies Silk

Hosiery

Hemstitching

GILDNER'S JEWELRY STORE
BALCONY

H.W. Stonebarger

§ §

GROCERY AND MEAT
MARKET

§ §

2002 Central

Phone 178 or 179





HALLOWEEN



M
E
R
R
Y

M
A
K
E
R
S





Olson-Johnson
Clothing Co.

§ §

"THE SIGN OF
GOOD VALUES"

§ §

In the Past
At the Present
In the Future

FAVORITE

LUNCHEON and
CONFECTIONS

§ §

"Once a Student,
Still With You"

§ §

Come in and Get
Acquainted

§ §

CLARK McCLURE,
Proprietor

Electric Irons, Toasters, Waffle Irons, Grills,
Percolators, Etc.

COMPLETE LINE OF PYREX OVEN WARE.

Thermos Bottles and Jugs. — Lunch Kits.

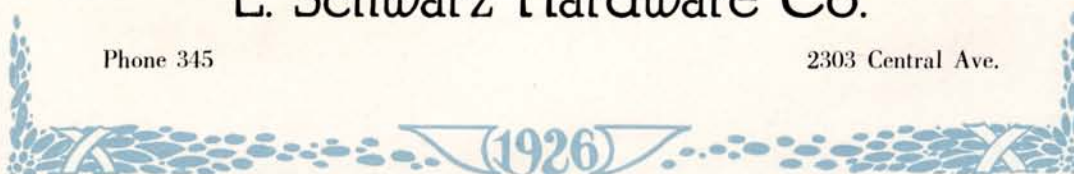
ALUMINUM WARE OF ALL DESCRIPTIONS

A Pleasure to Show You This Merchandise.

L. Schwarz Hardware Co.

Phone 345

2303 Central Ave.





Ida Rose Saunders—Why didn't they make that fellow in white knickers get off the floor.

Erwin Getty—That's the referee. He watches all the plays.

Ida Rose—Well, why didn't he let them play instead of taking the ball from them so often?

Bonnie French—How are you making out with Professor Bullock?

Ethel Smith—Fine, no words have passed between us yet.

Kermit Jackson—Madam, I am very sorry I killed your cat. Will you allow me to replace him?

Hazel Gillette—Oh, dear. This is so sudden.

Capps—Where are you going?

Harbottle—Over to the pool room.

Capps—Going to a billiard ball?

Harbottle—Nope, going swimming.

Harold Hayden—My heart's idol.

Ruth Davis—Put it to work.

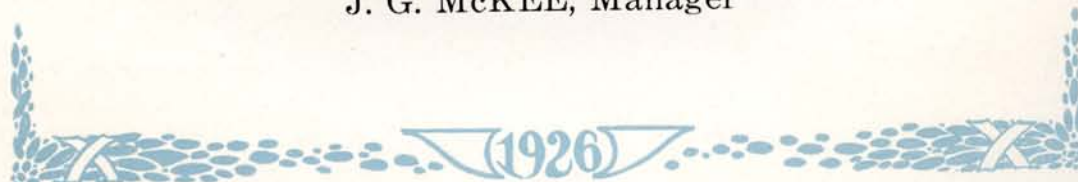
Federal Cafeteria

* * *

Not the Cheapest Place to Eat in Kearney
But the Very Best.

* * *

J. G. McKEE, Manager





Complete Lines of
DRY GOODS
FOOTWEAR
HOSIERY
Wearing Apparel
and Notions

Our prices are most reasonable—a
trial will convince

Complete Family Outfitters

The Boston Store
KEADNEY-NEBRASKA

2109 Central Ave.

Phone Black 970

The Central National Bank

Charter No. 6600



J. S. Donnell, President.
J. D. Lowenstein, Vice President.
W. R. Scribner, Vice President.
J. H. Dean, Cashier
C. B. Sibbett, Assistant Cashier

All Right Food Products

SAFE AND PURE



ICE CREAMS SHERBETS
PUNCHES
BUTTER MILK CREAM
COTTAGE CHEESE



Ravenna Creamery Company





Leigh Post—How do you know she loves you?

Harold May—I told her to smile if she loved me, and she laughed.

Arthur Arehart—I hear you're studying astronomy.

Lloyd Pounds—Not exactly; I'm taking boxing.

Henry Albrecht—Did you ever see anything as unsettled as the weather?

Mrs. Thomas—Well, there's your board bill.

Henry Riley—How's Compton in the high jump? Any good?

Francis Donnell—Naw, he can hardly clear his throat.

Ward Minor—"What's all the noise down there?"

Bob Huber—Fella' turned a corner!

Minor—Well?

Huber—There wasn't any corner.

Dr. Noyer—There goes a girl with a great mind.

Mrs. Scoutt—She doesn't look it. In what way?

Dr. Noyer—Minds her own business, and that's a great mind.

Wendell Coon—I understand you told someone I was a dog.

Nolan Alexander—It wasn't I. You are barking up the wrong tree, old man.

A Cordial Invitation

IS EXTENDED YOU
TO VISIT

Wray's Style Shop

2217 CENTRAL AVENUE

ALWAYS FIRST WITH THE NEWEST

Stylish Dresses, Suits, Coats

MILLINERY AND OTHER ARTICLES OF

WEARING APPAREL

REMEMBER THE ADDRESS





THE HOME OF
Hart Schaffner & Marx
Clothes
Jersild Sweaters



ALLEN-A-UNION SUITS

DOBBS HATS

Summer Students!
The Emporia Candy Kitchen & Cafe

Is One of the Best Places in the City
To Eat and Drink.

WE SERVE REGULAR MEALS AT ALL HOURS

Steaks, Chops and Lunches at Any Time.

SPLENDID SPECIAL PLATE FOR 30c

Sandwiches of all kinds

Our Fresh Home Made Candies Are Delicious

Ice Cream and Sherbets of All Kinds.

You Say Meet Me at Headquarters at

The Emporia Candy Kitchen & Cafe

23rd and Central Ave.—Block South of Post Office



K.S.T.C.



our
Coach Fulmer



Corrine



Brick



Clyde



Mildred



Carl



"Swannie"
Mitty Fine Fella-



Oscar and Fred



Chums



**Sunlite
Bread and Pastry**

Are Delicious

Give us a trial and find out

§ §

We Make the Dandiest

**FRENCH
TEA WAFERS**

For Your Tea Parties

§ §

Just Call 210—We do the rest

SUNLITE BAKERY

**Farmers
State Bank**

Kearney



Deposits

More Than a Million

Manuel-Flack

REAL ESTATE
and
INSURANCE



Building and Loan
Investments a
Specialty

City National Bank Building

Are
You Proud
To Show Your
Watch When Some
Friend Asks To See It?

§ §

If Not
Get a New One From

Hawthorne

KEARNEY'S JEWELER





**JOHN G. BALL
BARBER SHOP**

First Door West of City Hall.

§ §

We Specialize in Lady's and
Children's Barber Work

**YELLOW CAB &
BAGGAGE CO.**

PHONE 29

§ §

The Thinking Person Calls a Yellow Cab

Jack:—Have you a fine tooth comb?
Ruby:—No, but I have a fine tooth brush.

Harold Luse:—How long will I have to wait for a shave?
Barber:—Oh, I'd say about two years.

Mac. Lowe:—Sometimes you seem so manly, and other times absurdly effeminate. Why is it?

Matt Wigton:—Hereditry. You see half my ancestors were men and the other half women.

Peggy:—Do you remember when you were first struck by my beauty?
Kermit:—Yes, at the masquerade party.

Hazel Panek:—Say, Ray, in what part of the garden of love did you find my diamond?

Ray Williams:—(Absently) In the carrot patch my dear.

Miss Stuff:—Did you hold the mirror to Hazel's face to see if she was still breathing?

Carrol Anderson:—Yes, and she opened her eyes, gasped, and reached for her powder puff.

The Largest Line of
Imported and Domestic
Toilet Requisites
In this City.

Lantz Drug Store

Kearney, Nebr.

Phone 144

Shoe Hospital

• Quality - Service
Workmanship

JOHN B. BERTOLDI

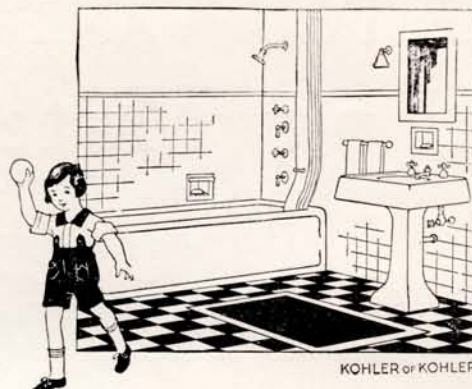
5 West 23rd Street

KEARNEY, NEBRASKA





Plumbing and Heating Engineers



Kearney Plumbing & Heating Company

Kearney, Nebraska

Phone No. 736

B. W. WALLACE, Pres.

GEO. W. RAUE, Vice-Pres.

W. J. LUNGER, Sec'y-Treas.

Clyde Cox:—My brother is an atheist.

Gerald Humbert:—Is that so? I didn't know they had a chapter here.

Mildred Thomas:—I hear that Seth Compton likes only brunettes.

Leona Sheldon:—That is what I hear. I am dying to meet him.

J. Jacobson:—What makes you call Erna Camp prescription?

Byron Nellson:—Oh, dear, dear,—She's so hard to fill.

Clyde Cox:—Do you like hamburger balls?

G. Thomas:—I don't know. I never attended one.

Prof. Anderson:—Does any one know what the Sherman act was?

Tony Moss:—Marching through Georgia.

Miss Ludden:—Nature is wonderful. Now when we walk through the fields in December, what do we see on every hand?

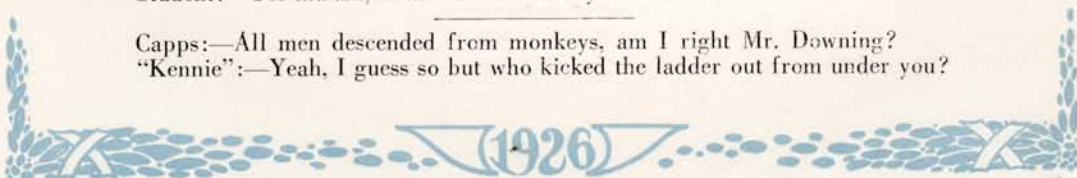
Agnes Deneen:—Gloves.

Mrs. Black:—This check is all right, as far as I can see, but have you nothing about you by which you can be identified?

Student:—Yes ma'am, I have a wart on my left ear.

Capps:—All men descended from monkeys, am I right Mr. Downing?

"Kennie":—Yeah, I guess so but who kicked the ladder out from under you?





70—Phone—70

IF YOU WANT
Building Material
AND
COAL

CALL
L. D. MARTIN

70—Phone—70

Mr. Anderson:—Who was the straightest man of Bible times?
Harry Horsham:—Joseph, because the Pharaoh made a ruler out of him.

Fred Carpenter:—But I don't think I deserve an absolute zero.
Prof. Engleman:—Neither do I, but it's the lowest grade I dare give.

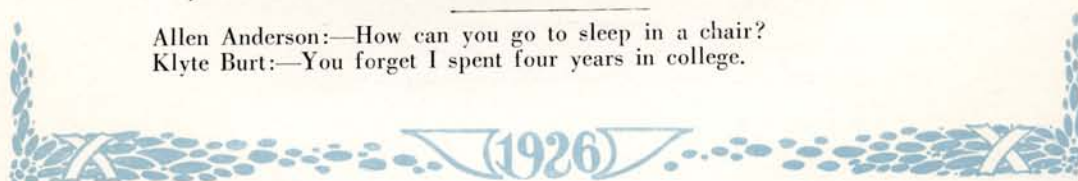
President Martin:—What kind of a student is Ward Minor?
Mr. Mercer:—Very apt.
President Martin:—Very apt?
Mr. Mercer:—Yes, very apt to flunk.

Harold Lidgard:—Great Scott! I forgot who wrote "Ivanhoe!"
"Bob" Best:—I forgot who the dickens wrote, "Tale of two Cities."

Ervin Getty:—Miss Ludden, could you tell me in round numbers what I made in the test?
Miss Ludden:—Yes—zero.

"Dad" Anderson:—Suppose that a dormitory girl didn't get in until 10:30 on Saturday night and—
Lloyd Pounds:—It can't be done.

Allen Anderson:—How can you go to sleep in a chair?
Klyte Burt:—You forget I spent four years in college.





"Jahn & Ollier Again"

FINE annuals, like brilliant victories, are brought about by the co-ordination of skillful generalship and trained effort. The Jahn & Ollier Engraving Co. is America's foremost school annual designing and engraving specialist, because in its organization are mobilized America's leading creative minds and mechanical craftsmen.

The Jahn & Ollier Engraving Co.

Photographers, Artists and Makers of Fine Printing Plates for Black and Colors

817 W. WASHINGTON BLVD., CHICAGO.





Prof. Fryklund:—What is the quickest way to make sawdust?

Glen Harden:—Why—er—

Prof. Fryklund:—Come, come! Use your head.

Harold Luse:—What are you going to be when you finish college, Nell?

Nell Sadler:—An old woman.

Miss Stuff:—You drive awfully fast, don't you?

School car driver:—Yes, I hit seventy yesterday.

Miss Stuff:—Did you kill any of them?

"Brick" Carskadon was helped to his feet amid the cheers of the crowd. He looked dazed, but managed to ask: "Who kicked me?"

"It's all right," said captain Cox, "it's a foul."

"A foul, indeed," echoed Brick, "I thought it was a mule."

Klyte:—You know I am a college bred man.

Marjorie Miltz:—Yes, a four year loafer.

Ramon Hanzel:—I like to hear Professor Sutton lecture on Physics. He brings things home to me that I have never seen before.

Clifford Paine:—Yeh! So does my laundryman.

Kermit Jackson:—A dog fills an empty space in a man's life.

Harold Hayden:—This is especially true of the hot dog.

Dry Cleaning
Protects the Health of the
Nation.



Have your garments cleaned and pressed and deodorized by a Master Cleaner, who develops all his time for your better appearance.



Dress Well and Success

WEAR

Kuppenheimer
GOOD
CLOTHES

§ §

ALWAYS GLAD TO SHOW
YOU.



Satisfaction or Money Back





Model Grocery

IN

PRICE
SERVICE

AND

QUALITY

GIVE US A TRIAL

H. Anderson

JEWELER

WATCHES, CLOCKS, JEWELRY
CAREFULLY REPAIRED

o—o

OPTICAL SUPPLIES

The Little Shop Around the Corner Where
You Can Always Save Money on
Jewelry and Repairing

14 W. 23rd Street

Phone Black 204

The Groceteria

2008 Central Ave.

Kearney, Nebr.

\$ \$

A Store That is Different

We have no clerks, customers wait
upon themselves—This makes lower
prices possible—Visitors Welcome.

COMPLETE LINE OF GROCERIES

Bank Safely

BANKING

HEADQUARTERS

\$ \$

Corner

Twenty-second and Central

\$ \$

American State Bank

L. J. STUTT, President

N. C. ANDERSON, Cashier

B. H. Erickson

—(G)—

CLEANER

AND

TAILOR

—(G)—

KEARNEY, NEBRASKA

Phone Red 69

17 W. 22nd St.





"Skinny" Anderson:—I want a sandwich.

Waiter:—What kind?

"Skinney":—Something striking.

Waiter:—How about a club?

Miss Conrad:—Who fiddled while Rome burned?

Gailord Hendrickson:—Rover, ma'am.

Miss Conrad:—No! No! Not Rover.

Gailord:—Towser, ma'am.

Miss Conrad:—Towser! What do you mean? It was Nero.

Gailord:—Well, I knew it was someone with a dog's name.

Paul Anderson:—If you'll answer just one more question I won't bother you any more.

Miss Crisp:—All right then. What is it?

Paul:—Why is it that the little fishes don't drown before they learn to swim?

Practice Teacher:—Your last paper was very difficult to read. Your work should so be written that even the most ignorant will be able to understand.

Student:—I'm very sorry, sir; what part didn't you understand?

Homer Morrow while debating evolution in Biology class:—Altho the Lord created monkeys with tails, He left man to draw his own conclusions.

Tomorrow's Styles Today



No other slogan so well describes the style and leadership of Buck's 16 stores. All over the state "Buck's" stands for the "last word in style and quality in footwear at a modest price.

Styles have no opportunity to grow stale in Buck's busy stores. Our immense volume moves them out quickly and new ones take their place.

BUCK'S BOOTERIE





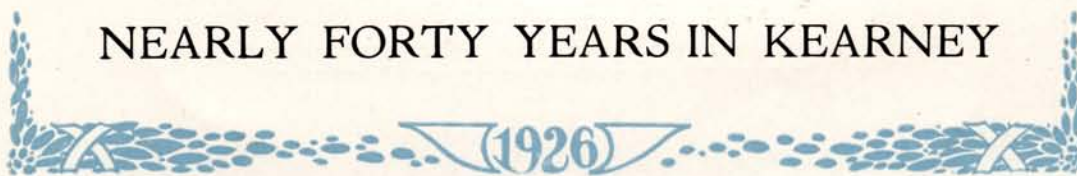
The Hub Printing Company

Printers
Bookbinders
Office Suppliers



Producers of College and
High School Annuals

NEARLY FORTY YEARS IN KEARNEY





Oscar:—I just accidentally let the baby's blanket drop out of the window.

Mrs. Swanson:—Awful clumsy of you; now baby will catch cold.

Oscar:—Oh, no, he won't. He was inside of it.

Henry Horstman:—Now, you must prove to me that the world is round.

John Bell:—I never said that it was.

Capps:—Why did you fall in love with me, dear?

Mrs. Capps:—So you've begun to wonder too?

Prof. Matthews:—Roy, please use the word 'triangle' in a sentence.

Roy Cummings:—If you can't catch fish with grasshoppers triangle worms.

John:—(nervously) After all, Dad, the real thing in college is the social atmosphere. The real values lie in social opportunities and—

Mr. Bean:—(taking out check book) What did you flunk in this time?

Miss Wirt:—For the last time, now, please write your last name first.

Bonnie French:—I did, ma'am, and then wrote my first name in front of it.

Prof. Sutton:—(in Physics class) Tomorrow start with lightning and go to thunder.

John Waldman:—Lewie, what makes your hair so red?

Lewie Awtry:—It is so wiry that every time I wash it, it rusts.



KEARNEY'S POPULAR RESTAURANT
GIVE US A TRIAL

It Pleases Us to Please You
OPEN DAY AND NIGHT





Mirro Aluminum Reflects Good Housekeeping



Mirro Aluminum brings a new cooking joy to your kitchen
and an added touch of beauty to your table.

Every little refinement of design and utility dear to a
woman's heart is found in Mirro.

Kearney Hardware Company

C. W. SHAHAN, Manager





Cop:—Excuse me, sir, but could you lend me a pencil?
Hanzel:—Certainly, here is one.
Cop:—And now your name and address—I saw you park your car in front of that hydrant a mement ago.

Jack Wheelock:—(passing J. Sterling Morton's house) I'm going to buy that house for my home.
Ruby:—That's just the house I'd like to live in.

Harold Kemble:—Hello there! Aren't you the little girl I kissed at the masquerade last night?
Sophomore:—It must have been sister, she's sick today.

John N. Dryden Kenneth H. Dryden

LAW OFFICES OF
DRYDEN & DRYDEN

Farmers State Bank Building
KEARNEY, NEBR.

E. G. REED

ATTORNEY-AT-LAW

Bodinson Office Bldg.

KEARNEY, NEBRASKA

WAID E. BALCOM

ATTORNEY-AT-LAW

Room 12—Opera House Bldg.

KEARNEY, NEBR.

LAW OFFICES OF

Pratt, Hamer & Beynon

New Pratt Building

KEARNEY, NEBRASKA

Warren Pratt, Thomas F. Hamer and

I. D. Beynon

ROBERT HUSTON

ATTORNEY-AT-LAW

Andrews Building

KEARNEY, NEBRASKA

W. L. MINOR

LAWYER

Rooms 21-22—Opera House Bldg.

KEARNEY, NEBR.





DR. E. E. MANNING

DENTIST

Phone 153

Over Buck's Booterie

DR. W. S. MORROW

DENTIST

Phone 43

Kearney

DR. K. L. HOLMES

AND

DR. R. M. GILMORE

DENTISTS

Over Twidale's Shoe Store

Phone 71

KEARNEY, NEBR.

E. A. Meservey, D. D. S.

F. O. Raasch, D. D. S.

X-RAY DIAGNOSIS

Opera House Bldg.

DR. F. A. WILSON

DENTAL SURGEON

Phone 113

Gibben's Bldg.

DR. J. A. CULLEN

DENTIST

Phone 218

Kearney

DENZLER

THE
DENTIST



Pratt Bldg.

Phone 69





G. H. BENTZ, M. D. R. T. JONES, M. D.
Res. Phone 832 Res. Phone Blk. 994

**Drs. Bentz
and Jones**

Surgery and Gynecology

Office American State Bank Bldg.
Phone 157

KEARNEY, NEBRASKA

Drs. S. O. Harris

AND

H. C. Hansen

Physicians and Surgeons

KEARNEY, NEBR.

Office Phone 198 2116½ Central Ave.

Norman T. Johnston, M. D.
PHYSIOTHERAPY

§ §

**Electrical Treatments of
All Kinds**

§ §

General Medicine

2118 Central Avenue
KEARNEY, NEBRASKA

Mr. Pate:—(taking roll) Miss Deal,
Harold May:—(sitting up quickly):
Shuffle again.

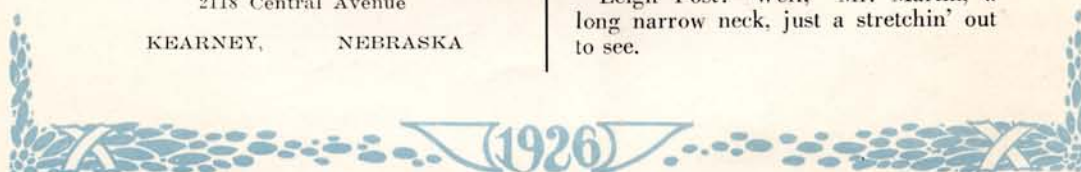
Miss Ludden:—If we plant potatoes
we raise potatoes; if we plant corn we
raise corn; if we plant apples we raise
apples. Now Mr. Paine, if you wanted
to raise sunflowers, what would you
plant?

Clifford Paine:—Corn.

Leigh Post:—Well Mr. Martin, it was
like this; I was sitting right by the door
and there was a whole lot of pretty girls
passing, then all at once the teacher
soaked me right in the peninsula.

President Martin:—What do you
mean, "peninsula?"

Leigh Post:—Well, Mr. Martin, a
long narrow neck, just a stretchin' out
to see.





C. Van Dyck Basten, M. D.

Opera House Bldg.
KEARNEY, NEBRASKA

DR. HENRY FARRELL

PHYSICIAN AND SURGEON
2121 CENTRAL AVENUE
PHONE 110

C. H. FOX, M. D., C. M.,
F. A. C. S.

EYE, EAR, NOSE AND THROAT
OFFICE IN CHASE BUILDING

Office and Residence Telephone 224
Office Hours
10:00 to 12:00 and 1:00 to 5:00
And by Appointment

Sophia E. Warner, M. D.

DISEASES OF
WOMEN AND CHILDREN
2113 Central Avenue
KEARNEY, NEBRASKA

Miss Eckhart:—Now imitate a crazy person.

Ralph Moore:—I don't know how.

Miss Eckhart:—Well just act natural.

Daughter:—Father, did you once have hair like snow?

Archie Leopold:—Yes, my daughter.

Daughter:—Well, who shoveled it off?

Margaret Yoder:—(to furious visitor) What's wrong with our report? I wrote it myself and said that you are the fittest member ever elected president of your class.

Marjorie Curley:—The paper says, "the fattest member."

Aily Hefner:—Do you like indoor sports, Neola?

Neola Young:—Yes, if they know when to go home.

Freda Reddy:—Yes, my parents tried hard to keep me from being an artist.

Miss Smith:—Well, I congratulate them on their success.

Prof. Mercer:—That star is Venus; it was named after a very beautiful woman.

Harry Horsham:—Was that the star the Wise Men followed?

Margaret Yoder:—Wake up! Did you hear that noise?

Alice Yoder:—Oh shut up! It's nothing but the bed ticking.





Dr. A. M. Skeffington

EYE SPECIALIST
OPTOMETRIST

American State Bank Building,
KEARNEY, NEBR.

Office Phone 162 Home Phone 88
Office Rooms 7-8-9
Over Twidale's Shoe Store

Dr. Richard Sullivan

OSTEOPATHIC
PHYSICIAN

Graduate American School of Osteopathy
KEARNEY, NEBR.

Dr. H. Power Irwin

OSTEOPATH

X-Ray and Clinical
Laboratory

Farmers State Bank Bldg.

Phone Black 1058 21st St. and Central

DR. L. A. BROWN

CHIROPRACTOR

Graduate of Palmer School of Chiropractic

Andrews Bldg.

KEARNEY, NEBRASKA

WE present the Blue and Gold for 1926. It is not a perfect product but we have worked toward that goal with the utmost of fidelity. It is a difficult task to please such a large number of people but we are desirous that each person will get enjoyment from some part of the book.

We wish to express our appreciation to contributors whose names do not appear, to our class sponsors for their thoughtful guidance, also to the Jahn and Ollier Engraving Company, Anderson Photographers and Hub Printing Company for their loyal cooperation.—Editor.

