

1905



1935

BLUE and GOLD



Arch LB 1905 .K4 B57x  
1955 c.3

The Blue and gold

UNIVERSITY OF NEBRASKA AT KEARNEY



3 5085 00554 7104

CALVIN T. RYAN LIBRARY  
KEARNEY STATE COLLEGE  
KEARNEY, NEBRASKA

This is the GOLDEN ANNIVERSARY year of the Nebraska State Teachers College at Kearney. More than forty thousand students have been enrolled at the College since the seventeenth day of June, 1905, when the portals of Nebraska's second state normal school were first thrown open.

When the State Legislature of 1903 authorized the Board of Education for State Normal Schools to establish a second Normal west of the 98th meridian, a mad scramble was initiated by some ten to twenty western Nebraska cities to see which would win the prize. It required one hundred two ballots to settle the question of location. The final competition was between Ord and Kearney. Kearney was offering approximately fifty acres of land as a site, plus a one-time apartment hotel (now Green Terrace Hall) and it is probable that the inducement which this building constituted became the deciding factor.

Who is responsible for the fact that the College at Kearney has become Nebraska's second largest state-supported institution of higher education? (Only the University of Nebraska has a larger enrollment then the College at Kearney.)

A college must have a meeting place, it must have a staff of instructors, it must have a student body, and it must have financial support.

The city of Kearney has furnished a healthy environment which has stimulated the growth of the College. In the early years, housing facilities were built to accommodate out-of-town students. Merchants of Kearney have, through the years, made possible the publication of the college newspaper and yearbook.

The taxpayers of Nebraska, through the Legislature, have furnished a physical plant and a yearly budget which has from year to year reflected the ability of Nebraska citizens to support education. Prominent and capable Nebraska men and women have served as members of the Board of Education without compensation.

And so to the citizens of Kearney; to the students who have gone out into the world to fill responsible positions as teachers and as leaders in every profession and walk of life; to the state board of education; to the administrators and teachers who have in many instances served the school at great personal sacrifice; to the patrons and taxpayers and the fathers and mothers who have loyally supported the ideals and traditions which have made the College great; to the students who have served in the military forces of the United States, many of whom made the supreme sacrifice, this 1955 Blue and Gold is proudly and respectfully dedicated.





The 1955

BLUE and GOLD

presents the

30<sup>th</sup> year of

NEBRASKA STATE TEACHERS COLLEGE  
Kearney, Nebraska

EDITOR - - - Duane Shackelford  
BUSINESS MANAGER - Roger Dahlin

Sports Editor..... Dayne Smith  
Senior Editor..... Marilyn Whitney

Underclassmen Editor..... Dale Black  
Typist..... Janet Mitchell

Artist..... Donna Brink  
Sponsor..... Student Council











# CONTENTS

ADMINISTRATION - Page 10

STUDENTS - - - - Page 25

ORGANIZATIONS - Page 64

SPORTS - - - - Page 98

ACTIVITIES - - - Page 122







ADMINISTRATION BUILDING

A. O. THOMAS TRAINING SCHOOL







GYMNASIUM

VOCATIONAL ARTS BUILDING







CASE HALL



STUDENT UNION

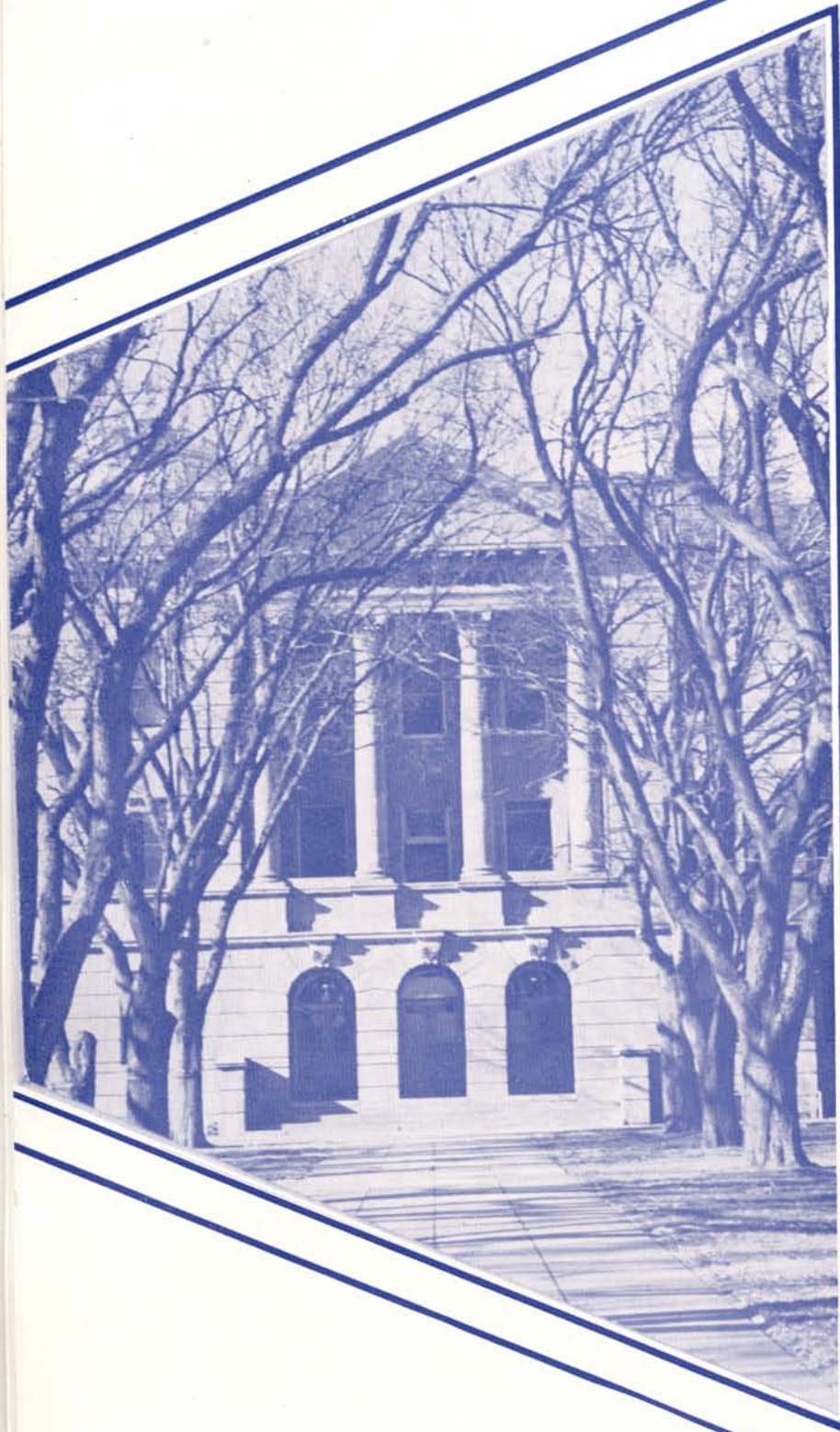


GREEN TERRACE HALL



MEN'S HALL







# ADMINISTRATION





President Herbert L. Cushing



President and Mrs. Cushing



Miss Beverly Haxby  
Secretary to President Cushing





## Board of Education of State Normal Schools

Left to right: E. Albin Larson, Secretary; Miss Beverly Haxby; President Herbert L. Cushing; Freeman B. Decker, Commissioner of Education. Neal S. Gommon, President, Peru State Teachers College; J. Hyde Sweet, past Vice-President; John D. Rice, President, Wayne State Teachers College; Barton L. Kline, President, Chadron State Teachers College, Ernest M. Johnson, past board member, Chadron; Ralph M. Carhart, board member, Wayne; Mrs. Haven Smith, board member, Chappell; Everett L. Randall, board member, Kearney; A. D. Majors, past President.



**Robert Thorp**  
Publicity Director

**Dr. Leo Thomas**

Dean of Instruction and Professor of Education; B.S., Kearney State Teachers College; M.A., University of Wyoming; Doctor of Education, University of Wyoming.



**Jean M. Petitt**

Associate Dean of Student Personnel Services; A.B., University of Chattanooga (Tennessee); M.A., Middlebury College, Vermont.

**Bernhard F. Stutheit**

Dean of Student Personnel Services; B.S., A.M., University of Nebraska; Graduate Student, University of Colorado, University of Nebraska.





# Faculty



**Adams, Louise**  
A.B.



**Beckmann, Elmer**  
B.A., M.A.



**Carlson, Kenneth**  
B.S., M.A.



**Bliese, John C.W.**  
B.A., M.A., Ph.D.



**Ahrendts, Harold**  
A.B., M.A.



**Cole, Harvey E.**  
A.B., M.A.



**Bergquist, Alta**  
R.N., B.S.



**Bruner, W. E.**  
B.S., A.M., Ph.D.



**Bauer, LeRoy**  
B.S., M.Ed., M. Music



**Conrad, Jennie**  
A.B., A.M.

# Faculty



**Copeland, Leland**  
A.B., M.A.



**Gallemore, Doris**  
B.S., M.A.



**Fox, Donald E.**  
A.B., M.S., Ph.D.



**Failor, Leona Mae**  
B.S., M.A., Ph.D.



**Danker, Del**  
A.B., M.A.



**Garrett, Delia**  
B.S., M.S.



**Franklin, Marvin**  
B.A.



**Foster, Charlie**  
A.B., A.M.



**Diffenderfer, N.R.**  
B.S., M.A.



**Hansen, Mildred**  
A.B.



# Faculty



**Hirst, Wilma**  
B.A., M.A., Ed. D.



**Holm, Myron**  
A.B., M.A.



**Jester, Don**  
A.B., M.A.



**Hoffman, Harry**  
A.B., A.M.



**House, Robert**  
B.F., A.M., Ph.D.



**Johnson, Clara**  
A.B., M.A.



**Holmgren, Philip**  
A.B., M.A., Ph.D.



**Istas, Helen**  
A.B., M.A., Ph.D.



**Holcomb, Laurel**  
B.A., B.S., M.S.



**King, William**  
A.B., M.A.

## Faculty



**Klein, Dorothy**  
A.B., A.M.



**Mantor, Lyle**  
A.B., A.M., Ph.D.



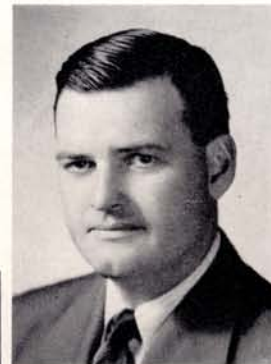
**Messman, Warren**  
A.B., M.A.



**Lynn, William**  
B.M., M.M.



**Larsen, L. M.**  
B.A., M.A.



**Morris, William**  
B.S., M.A.



**McClure, Margaret**  
A.B.



**Mantor, Bernice**  
B.S., M.S.



**Larson, Minnie**  
A.B., A.M.



**Morse, Mary**  
B.S., M.S., Ph.D.



## Faculty



**Nelson, Theodora**  
B.S., M.S.



**Ockinga, Clara**  
B.S., M.S.



**Robinson, Alice M.**  
A.B., M.A.



**Paine, Alice**  
Ph. B., B.S., M.S.



**Ryan, Calvin T.**  
A.B., Ed. M.



**Nigh, Edna**  
A.B., A.M.



**Olsen, Otto**  
A.B., B.S., A.M.



**Roberts, Phyllis**  
B.A., M.A.

**Sampson, Helen**  
B.A., M.A., Ph.D.



# Faculty



**Skinner, Blanche**  
A.B., A.M.



**Welsbacher, Richard**  
B.A., M.A.



**Williams, Dorothy**  
A.B.



**Webster, Romaine**  
B.S.



**Smithey, Edith M.**  
A.B.



**Yingling, Harriet**  
B.S., M.A.



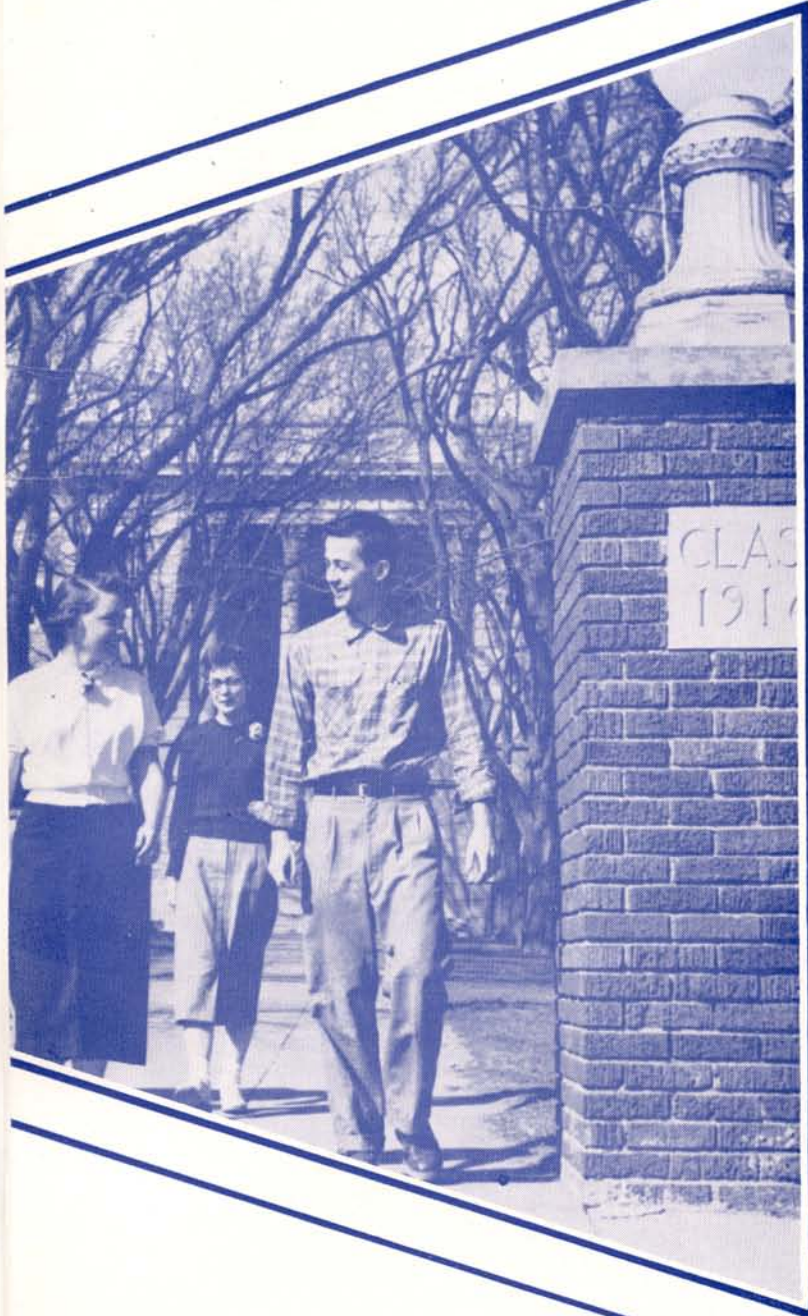
**Whitfield, George**  
B.M., M.M.

**Stoutemeyer, Malvina**  
B.S., A.B., A.M.



**Welch, Roland**  
B.A., M.A.





**STUDENTS**







**Cum Laude**

Glen Underhill

**Honorable Mention**



Jo Hicks



Bill Kalous

Jo Anne Meyer

Darrel Lloyd

Lois Hanshew

Gordon Moor



# Seniors

## AUBLE, MARION M.

Arnold, Nebraska

Women's League-Secretary 4,  
Zeta Chi Alpha-Secretary 3,  
President 4, Antelope staff 2-3,  
A Cappella Choir 2-3, Xi Phi  
3-4, Colhecon 3, Kappa Delta  
Pi 3-4, YWCA 2-3-4.



## BAHNSEN, CATHARINE E.

Kearney, Nebraska



## BLAUCH, DIANE E.

York, Nebraska

Orchestra 4, A Cappella Choir  
4, Choraleers 4.



## BRANDT, Jo ANN

Kearney, Nebraska

Independent Association 4,  
WAA 1-2-3-President 4, P.E.-  
M.M. 4, Zip Club 2.



## BURGESS, GRETCHEN H.

Nebraska City, Nebraska

Antelope Staff 1-2, WAA 1-2-  
3-4, P.E.M.M. Treasurer 4, Pre-  
Med. Club 3, Zip Club 2,  
Naiads 2.



## CAMARAS, HELEN G.

Grand Island, Nebraska

Delta Pi Beta 2-4, YWCA 1,  
Martin Hall Vice President 4,  
Martin Hall Dorm Council 4,  
Cheerleader 1-4.



## CAMPBELL, RODNEY

Giltner, Nebraska

Phi Tau Gamma 3-4, Football  
1, Track, Choir 1-2-3-4, Chora-  
leers 1-2-3-4.



## CHANDLER, TOM F.

Republican City, Nebr.

Sigma Tau Delta 4.





## Seniors



**CHANAY, THOMAS A.**

Giltner, Nebraska

Caledonian 2-3-Treasurer 4, Antelope Staff 3, Inter-Varsity 2-Vice President 3-4, Men's Hall Dorm Council 4.



**CHRISTENSEN, ANNE M.**

Kearney, Nebraska

Senior Class Treasurer, Delta Pi Beta 1-2-4 Secretary 3, Choir 2-3, Naiads 2-3, Inter-Fraternity-Sorority Council 4, Colhecon 1-2-4, Homecoming Queen 4.



**COLLISON, VERA L.**

Campbell, Nebraska

Women's League Council 3-President 4, Sigma Theta Phi 1-2-3-4, Band 1-2 Librarian 3-4, Opera 3-4, Orchestra 1-2-3-4, A Cappella Choir 1-2-3-4, Choraleers 1-2-3-4, Delta Omicron Treasurer, Chorister 4, Pi Omega Pi 1-2-3, MENC 1-2-4 President 3, YWCA 1-2, Case Hall Councilor 2 Vice President 3.



**CRONIN, JOHN H.**

Minden, Nebraska

Phi Tau Gamma 2-3-4, Antelope Staff 3, A Cappella Choir 1, Pre-Med Club 3, Newman Club 1-2-3-4.



**DAHLIN, ROGER D.**

Ord, Nebraska

Student Council President 4, Freshman Class Vice President, Caledonian 1-2-3-4, Antelope Staff 1-2, Blue and Gold Staff 3-4, Pre-Med Club 4, Vets Village Council 1-2-3-4.



**DeLANO, CALVIN F.**

Kearney, Nebraska

Caledonian 3-4, Lambda Delta Lambda 3 President 4.



**DOLL, JAMES W.**

Lincoln, Nebraska

Phi Tau Gamma 3-4, Football 1-2, Band 2, K Club 1-2.



**DOWHOWER, DONALD**

North Platte, Nebraska

Newman Club President 4, Vets Village Council 3-4.

# Seniors

**DOWNEY, BARBARA**

Grand Island, Nebraska  
Zeta Chi Alpha 2-3-4, Band  
1-2-3, YWCA 1-2.



**FOSTER, ROBERT L.**

Logan, Nebraska  
Inter-Varsity 1-2-3-4.



**DYER, DONALD**

Gothenburg, Nebraska



**FOTH, ELLEN J.**

Ord, Nebraska  
Women's League Council 2,  
Sigma Theta Phi 1-2-3-4, Kappa  
Delta Pi 3-4, Martin Hall Presi-  
dent 4, Colhecon 1-2, YWCA  
1-2.



**EMBREE, ARTHUR**

Merna, Nebraska  
Caledonian 2-3-4.



**GUNDERSON, CAROL**

Dix, Nebraska



**ESCRITT, DAVID E.**

Neligh, Nebraska  
Vets Village Council Mayor 3,  
Pre-Med Club 2.



**HANSHEW, LOIS S.**

Litchfield, Nebraska  
Kappa Delta Phi 4, Sigma Tau  
Delta 4.





## Seniors



**HARMS, MERVYN G.**  
Hildreth, Nebraska  
LSA



**HASCALL, DEAN**  
Kearney, Nebraska



**HEWITT MARJORIE F.**  
Kearney, Nebraska  
Independent Student Association 4.



**HICKS, JO**  
McCook, Nebraska



**HOEGH, ISABELLE J.**  
Hampton, Nebraska  
Inter-Varsity 3-4, Colhecon 4,  
Independent Association 4.



**HUFF, DUANE**  
Callaway, Nebraska



**HUNSE, DORIS**  
Arnold, Nebraska  
Senior Class Secretary, Sigma  
Theta Phi 3-4, Antelope Staff  
1, Pi Kappa Delta 3-4, Kappa  
Delta Pi 3-4, Pi Omega Pi 3-4,  
Alpha Psi Omega Secretary-  
Treasurer 4, Xi Phi 4, All  
College Play 1-2-3-4.



**JACOBSON, SHARRON L.**  
Riverdale, Nebraska  
Zeta Chi Alpha 1-2-3-4, Col-  
hecon 1-2 Secretary 3, Presi-  
dent 4, Case Hall Dorm Coun-  
cilor 2.

## Seniors

### JOHNSON, MILTON E.

Chappell, Nebraska

Football 3, Track 3-4, Intramural basketball 3-4, K Club Secretary-Treasurer 4, LSA President 4, Mens Hall Council 4.



### JOHNSON, PATSY R.

Gothenburg, Nebraska

Junior Class Treasurer, Sigma Theta Phi 1-3 Secretary 2 Rush Chairman 4, Band 1-2, Xi Phi 3 Corresponding Secretary 4, Kappa Delta Pi 3-4, Inter-Fraternity-Sorority Council Treasurer 4, Case Hall Council 1-2-3, Zip Club 1-2-3, Martin Hall Council 4, YWCA 1-2-3, Naiads 1.



### KALOUS, BILL F.

Kearney, Nebraska

Caledonian 1-2-3-4, Antelope Sports Editor 3-4, Track Manager 1, Football Statistician 4, Band 1, Pi Omega Pi 2 Vice President 3, President 4, Xi Phi 3 President 4, Kappa Delta Pi 3-4, K-Club 2-3-4.



### KAVADAS, SAM

Kearney, Nebraska



### KIMBROUGH, RICHARD B.

Kearney, Nebraska

Pi Kappa Delta, Track, K-Club, Debate.



### KOCH, RODNEY L.

Eustis, Nebraska

Senior Class President, Caledonian 2-3-4, Football 1-2, Intramural Basketball 1-2-3, Kappa Delta Pi 3-4.



### LANDERS, RODERICK R.

Gothenburg, Nebraska

Pre-Med Club President 4.



### LINDHOLM, RODONNA M.

Polk, Nebraska

Student Council Secretary 4, Women's League Secretary 3, Zeta Chi Alpha 1-2-Vice President 3 Secretary 4, Band 1, A Cappella Choir 1, YWCA 1 Vice President 2-3 President 4, Xi Phi 3 Vice President 4, Kappa Delta Pi 3 Vice President 4, Colhecon 1, Case Hall President 3, 1955 Cinderella.





# Seniors



**LYBARGER, ADDIE C.**

Grand Island, Nebraska

Freshman Class Treasurer, Sigma Theta Phi 1-2-3-4, Kappa Delta Pi 3-4, Xi Phi 3-4, YWCA 1-2, WAA 1-2-4, P.E.-M.M. President 4, Pep Club 1-2.



**MCCAULEY, MARY E.**

Merna, Nebraska

Newman Club



**MCGINNIS, REX C.**

North Platte, Nebraska

Student Council 2-3, Sophomore Class Treasurer, Phi Tau Gamma 1-3 Secretary 2 Chancellor 4, Inter-Fraternity-Sorority Council 4, Antelope Staff, Blue and Gold Editor 3, YMCA, Kappa Pi 3 Secretary Treasurer 2 President 4.



**McMAHON, ROBERT L.**

Arnold, Nebraska

Pre-Med Club 2-3-4.



**MEYER, Jo ANNE L.**

Scotia, Nebraska

Women's League Council Treasurer 3, Student Council 4, Zeta Chi Alpha 2-3 Vice President 4, Inter-Fraternity-Sorority Council Treasurer 3, Antler Staff 3-4, A Cappella Choir 1, Pi Omega Pi 2-3 Vice President 4, Xi Phi 3 Secretary Treasurer 4, Kappa Pi 2 Vice President 3 Treasurer 4, Sigma Tau Delta 3-4, Kappa Delta Pi 3-4, WAA 2-4 Treasurer 3, Zip Club 2, YWCA 2, LSA 2-4, Colhecon 4, German Club 1.



**MEYER, J. D.**

Kearney, Nebraska

Caledonian 2-3-4, Blue and Gold 3.



**MILLS, DAVID L.**

North Platte, Nebraska

Student Council 1-2, Junior Class President, Phi Tau Gamma 1-2-3-4, Blue and Gold Sports Editor 2-3, K-Book 2, Basketball 1-2-3-4, Track 3-4, Tennis 2-3-4, A Capella Choir 2-3, K-Club 3-4, YMCA 2.



**MITCHELL, JANET L.**

Orleans, Nebraska

Junior Class Secretary, Women's League Council 1, Sigma Theta Phi 1-2-3 President 4, Antelope Staff 3, Blue and Gold 3-4, Band 1-2, A Cappella Choir 1-2-3-4, Opereta, Choraleers, Xi Phi 3 Investigating Secretary 4, Kappa Pi 2-3 Vice President 4, Kappa Delta Pi 3-4, WAA 1-2-3-4, P.E.M.M. 4, YWCA 1-2-4, Inter-Fraternity-Sorority Council President-4, M.E.N.C. 1, Zip Club 1-2, Mardi Gras Queen 3.

## Seniors

### MOOR, GORDON

Holdrege, Nebraska

Caledonian 2-3-4, Band 1-2-3,  
Orchestra 1-2, Lambda Delta  
Lambda 3-4, SUAC President  
4, Pre-Med Club 2-3-4.



### PHILLIPS, RODNEY

Arapahoe, Nebraska

Senior Class President.



### NUTTER, JOYCE L.

Thedford, Nebraska

Kappa Delta Pi 3-4, Independent  
Association 4.



### POPE, RUSSELL

Arnold, Nebraska

Caledonian 2-3, K-Club 3-4,  
Track 2-3.



### OSTERLUND, ROBERT

North Platte, Nebraska

Caledonian 2-3 President 4,  
Inter-Fraternity-Sorority Council  
4, All College Play 1, YM-  
CA 1-2.



### REYNOLDS, MONTE D.

Fairbury, Nebraska



### PFEIFFER, ROBERT

Kearney, Nebraska



### RICHARDS, VERA E.

Wray, Colorado

Kappa Pi 4.





## Seniors



**SCHWARTZ, CLARA M.**

Broken Bow, Nebraska

Zeta Chi Alpha 1-2-3-4, Colhecon 1, Zip Club 1, Newman Club 1.



**SMITH, BARBARA A.**

Bridgeport, Nebraska

Independent Association 3-4, Antelope Staff 3, Sigma Tau Delta 3 Secretary 4, Inter-Varsity 4.



**SOHRWEID, LaVONNE A.**

Riverdale, Nebraska

Sigma Theta Phi 1-2-3-4, Zip Club 1-2-3, YWCA 1-2-3-4, Colhecon 1-2.



**SPILINEK, ALICE M.**

Ord, Nebraska

Antelope staff 1, WAA 4, A Cappella Choir 1-2-3-4, Choraleers 3, YWCA 1-2.



**TALBERT, MARY**

Valley, Nebraska

Women's League Council 2, Sigma Theta Phi 1-2-3-4, A Cappella Choir 1-2-3-4, Choraleers 1-2-3-4, Xi Phi 4, Newman Club 1-2-3-4, Pep Club 1-2-3-4.



**TAUBENHEIM, MONICA M.**

Kearney, Nebraska

WAA 1-2-4 Vice President 3, Colhecon 1-2-3-4, Newman Club 1-2-3-4, Zip Club 2, Vice President of State Home Economic College Club 4.



**TAYLOR, DALE L.**

Chappell, Nebraska

Football 1-2-3-4, Basketball 1, Track 1, K Club, Phi Tau Gamma.



**TAYLOR, EUGENE**

Kearney, Nebraska

# Seniors

## THIEL, DWIGHT O.

Alda, Nebraska

Antelope Staff 1-2-4, Intramural Basketball, Social Science Club.



## THOMAS, DICK

Sumner, Nebraska

Band 1, Choir 1.



## THOMAS, GARY F.

Kearney, Nebraska

Phi Tau Gamma 3-4, Track 1, Band 1-3 Drum Major 2 Student Conductor 4, Orchestra 2-3 Student Manager 4, A Cappella Choir 1-2-3 President 4, Choraleers 2-3-4, Operetta 3-4, M.E.N.C. 2-3-4, Kappa Delta Pi 3-4, Xi Phi 4.



## TUNNELL, GENIECE B.

Stapleton, Nebraska

WAA 3-4, YWCA 1-2-4, Secretary 3, P.E.M.M. 3-4, Zip Club 1-2-3.



## UNDERHILL, GLEN

Trenton, Nebraska

Independent Association 4, Antelope Staff Assistant Editor 4, Lambda Delta Lambda Vice President 4, Sigma Tau Delta, Kappa Delta Pi, Inter-Varsity.



## VANDRUFF, CHARLES W.

Holbrook, Nebraska

Social Science Club.



## VOLSTEADT, ROBERT F.

Bonesteel, South Dakota

Phi Tau Gamma, Nebraska Industrial Education Association, Vets Village Council 2 Mayor 3.



## WALKER, RUBY I.

Shelton, Nebraska





## Seniors



**WATKINS, RAMONA M.**

York, Nebraska

YWCA.



**WILSON, MILDRED M.**

Kearney, Nebraska

Delta Pi Beta 1-2 Treasurer 3  
President 4, Colhecon 1-2-4  
Historian 3, Naiads 1-2, Inter-  
Fraternity-Sorority Council 4.



**WHITNEY, MARILYN A.**

Funk, Nebraska

Women's League Council 4,  
Zeta Chi Alpha 2-3-4, SUAC  
Secretary 4, Antelope Staff  
1-4, Blue and Gold Staff  
Sophomore Junior Senior  
Editor, Band 1-2-3 Student Per-  
sonnal Manager 4, Orchestra  
1-2-3-4, A Cappella Choir 1-2-  
3-4, Madrigal 1, Choraleers  
2-3-4, Opera 2-3, Xi Phi 3-4,  
Kappa Pi 2 Secretary-Treasurer  
3 Secretary 4, Delta Omicron  
First Vice President 4, Zip  
Club 1, YWCA 1-2, MENC 1,  
Colhecon 3-4.



**YANNEY, MICHAEL**

Kearney, Nebraska

Student Council Treasurer,  
Freshman Class President,  
Men's League President Vice  
President, Phi Tau Gamma  
Chancellor, Inter-Fraternity-  
Sorority Council, Pi Omega Pi  
Treasurer, Pi Kappa Delta  
President 4, Kappa Delta Pi  
President, Xi Phi 4, Inter-  
collegiate Debate Team.

**FIRST SEMESTER GRADUATES**—BACK ROW: Robert Pfeiffer, Lillian Ralston,  
Mary Logsdon, Eugene Taylor. FRONT ROW: Mary McCauley, John Cronin,  
Barbara Downey.



# Juniors

**Adams, Ray**  
Blythe, California

**Alberding, Arthur**  
Clay Center

**Alcorn, Dewaine**  
Kearney

**Alexander, Mary**  
Kearney

**Ayres, Don**  
Gothenburg

**Babb, Lila**  
Broadwater

**Bailey, Olivene**  
Ansley

**Beghtol, Barbara**  
Kearney

**Bennett, Harold**  
Litchfield

**Bills, Ed**  
Lodge Pole

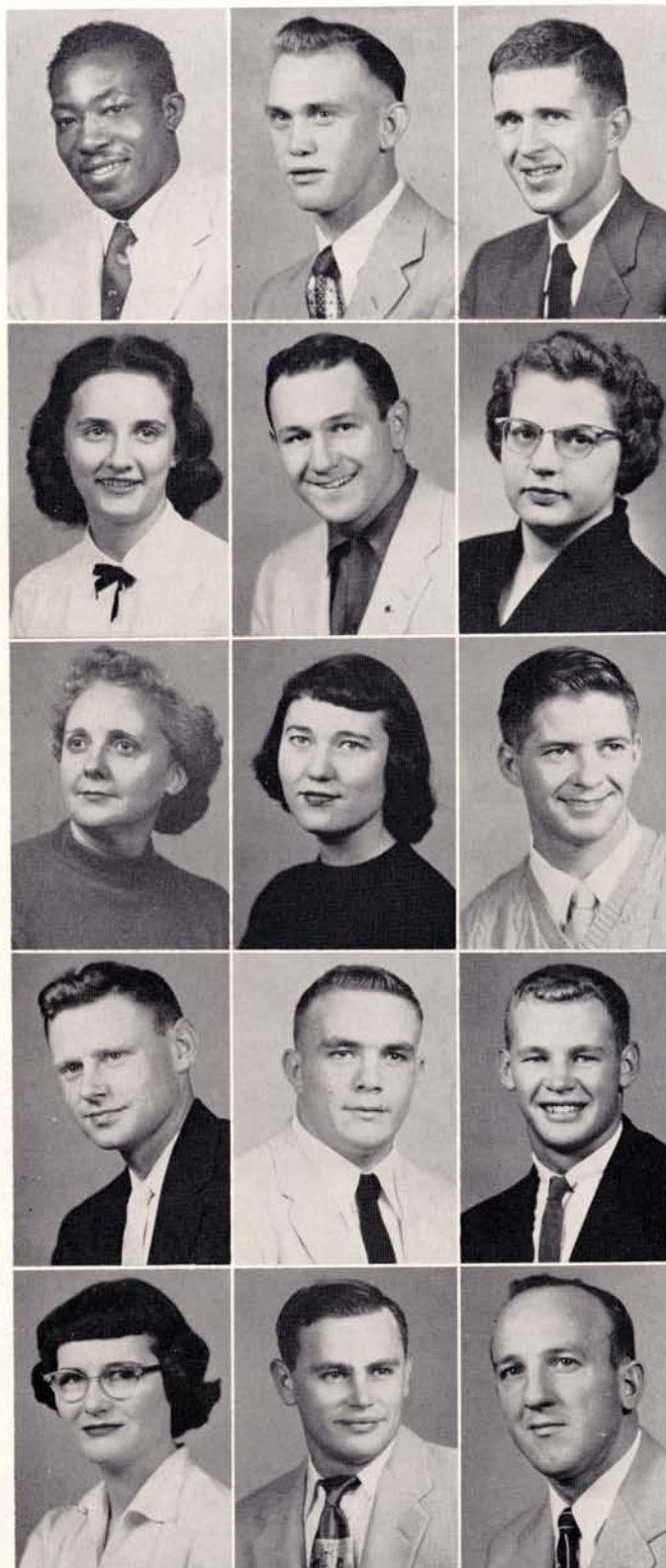
**Bowers, Bill**  
Paxton

**Brink, David**  
Kearney

**Brink, Donna**  
Kearney

**Brisco, Junior**  
Lexington

**Brown, William**  
Loup City





## Juniors



**Clark, Lexie**  
Gothenburg

**Cline, Colleene**  
Riverton

**Cornish, Filbert**  
Oconto

**Daily, James**  
Milburn

**Daily, Joan**  
Merna

**Darling, Donald**  
Kearney

**DeRolf, John**  
North Platte

**Dick, Robert**  
Kenesaw

**Dickerson, Barbara**  
Sumner

**Dodson, Max**  
Venango

**Douglas, Ella**  
Aurora

**Duncan, Virginia**  
Wood River

**Dyer, Pearl**  
Kearney

**Engleman, Harold**  
Kearney

**Ferguson, Larry**  
Taylor

# Juniors

**Ferris, Verneta**  
Osceola

**Fisher, Charlotte**  
Amherst

**Glover, Rex**  
Broken Bow

**Grandstaff, Stanley**  
Maxwell

**Hanley, Grendolyne**  
Hayes Center

**Harris, Norma**  
Kearney

**Hauff, William**  
Glenvill

**Hernbloom, Betty**  
Lodge Pole

**Hinkle, Marilyn**  
Kearney

**Houston, Dennis**  
Kearney

**Hueffle, George**  
Kearney

**Hunse, Valetta**  
Arnold

**Jardon, Don**  
Alma

**Jensen, Erna**  
Cozad

**Johnson, Kenneth**  
Eddyville





## Juniors



**Johnson, Shirley**  
Kearney

**Laux, Myrtle**  
Minden

**Lindley, Bruce**  
Lodge Pole

**Lippstreu, Clarence**  
Hildreth

**Loschen, Elaine**  
Kearney

**Lowe, Janet**  
Alma

**McCormick, Laird**  
Kearney

**Marlott, William**  
Kearney

**Margritz, Shirley**  
Lexington

**Maxey, Gene**  
Republican City

**Miller, Robert**  
Hendley

**Moon, Virginia**  
Kearney

**Moss, Bill**  
Kearney

**Nellson, Jack**  
Kearney

**Nelson, Kyler**  
Kearney

**Nordbrock, Connie**  
Alma

# Juniors

**Nordbrock, Gerald**

Wilcox

**Novasad, Amelia**

Ord

**Osterhoudt, Howard**

Kearney

**Patterson, Ronald**

Gothenburg

**Peak, Mary Ann**

Orleans

**Pederson, Richard**

Curtis

**Pfeiffer, Robert**

Amherst

**Raburn, Harold**

McCook

**Rathe, Carol**

Kearney

**Roucis, Patricia**

Broken Bow

**Schmitz, Raymond**

Kearney

**Schulte, Beverly**

Scottsbluff

**Scott, Clayton**

Grand Island

**Shackelford, Duane**

Trenton

**Shaffer, Bill**

Litchfield

**Shiltz, William**

North Platte





## Juniors



**Sinnen, Dallas**  
Minden

**Straney, Don**  
Minden

**Swanson, Jack**  
Aurora

**Tetzlaff, Andrew**  
Orleans

**Thompson, Marian**  
Cairo

**Thurin, Leland**  
Ong

**Tilmanis, Anita**  
Kearney

**Towers, Joyce**  
Maxwell

**Tucker, Zoe Ann**  
Grand Island

**Underwood, Jeanne**  
Lexington

**Wear, Mary Alice**  
Big Springs

**Whitesel, Lyle**  
Miller

**Wise, Dean**  
Sidney

**Wright, Jo Ann**  
Crete

**Wright, Lewis**  
Kearney

# Sophomores



Ackerman, Gerald



Allmand, Barbara



Altmaier, Marianne



Anderson, Barbara



Anderson, Carole



Anderson, Jane

Anderson, Merrell

Anderson, Lucille

Anderson, Gary

Asher, Dewey

Augustin, Norris

Aulik, Inge

Bacon, Kenneth

Barker, Ruth Ann

Bebernes, Jerrold

Beck, Jim

Boggs, Donna

Bottrell, Robert





## Sophomores



Brown, Donna



Bruening, Gene



Bubak, Dale



Buckbee, Dyle



Buller, Jim



Burger, Norma



Burton, Diane



Buterbaugh, Jim



Calvin, Glenda



Cargill, Blanche



Chaney, Barbara



Christensen, Sylvia

Clement, Leona



Collison, Larry



Corkill, Nila



Cox, Richard



Crum, Jeanette



Dady, Gale



# Sophomores



Day, Susan



Dicken, Irvin



Dohrman, June



Drake, Leslie



Dusek, Amy



Eckhout, Mary

Edson, Roger

Ernst, John

Evans, Diane

Fischer, Florence

Fleecs, Dorothy

Foster, Arlene

Fox, Marlene

Gaston, Russell

Gell, Robert

Genereux, Evelyn

Gentry, Boyd

George, Cletys





## Sophomores



Glenn, Sharon



Goudy, Maxine



Graham, Sharon



Gross, Frances



Gudgel, Shirley



Guzinski, Jerome



Hahn, Dwight



Haines, Elsie



Hansen, Martha



Harmoney, LaVonn



Harrison, Birdie



Hartman, Shirley

Haskin, Jerry



Hawley, Glenn



Hemje, Don



Hemmett, Larry



Henderson, Ivan



Hensel, Mildred



## Sophomores



Hoatson, Margaret



Holm, Lee



Holtman, Sally



Hooper, Marlene



Howitt, Doyle



Ingram, Diane

Jacob, Carolyn

Jay, Patricia

John, Bill

Johnson, Alice

Johnson, Bruce

Johnson, Gayle

Johnson, Larry

Johnson, Leon

Jones, Jerry

Jordan, Gerald

Joyce, Marilyn

Kempf, Fred





# Sophomores



Kenney, Perry



Kennedy, Susie

Lorenzen, Anita



King, John



Kramer, Marilyn

Lueking, Anita



Krzycki, Viola



Kuhlmann, Arlene

McAfee, Lois



Kublish, Dorothy



Laguna, Rosie

McLaughlin, Patty



Lanquist, Joan



Lewis, Margaret

Main, Donald



Lloyd, Roberta



Lockhorn, Lenore

Main, Kenneth



# Sophomores



Manfull, Barbara



Manhart, Mary



Max, Twila



Meyer, Russell



Mitchell, James



Morris, Alan

Mundt, Betty

Naylor, Dagmar

Nealon, Margall

Nelson, Gerald

Nelson, Donald

Nelson, James

Nelson, Maurice

Nelson, Park

Olmsted, Elnor

Olson, Patricia

Patsios, Bill

Paulsen, Sonja





# Sophomores



Peterson, Larry



Pfester, Emily



Rosencrants, Robert



Rademacher, Robert



Rahrick, Barbara



Rumbeck, Cherie



Rauert, William



Reher, Sharonne



Sand, Royal



Remy, Richard



Reynaga, Josie



Sanford, Jim



Rice, Janice



Rippen, Leora



Schmidt, Orville



Robertson, LaVerne



Robinson, Patricia



Schuller, Ronald

# Sophomores



Seymour, Jack



Shada, Wayne



Shaffer, LaVonne



Shaffer, Shirley



Skow, Dale



Smith, Dayne

Smith, Marjorie

Snell, John

Spencer, Berl

Springer, Joyce

Stahn, Mary

Stebbins, Opal

Stegman, Dollie

Stemper, Robert

Stransky, Jack

Strasburg, Katherine

Sutherland, Delmar

Swanson, James





# Sophomores



Tatum, Loren



Thurman, Joan



Ticken, Gene



Tomlinson, Donald



Treadway, Robert



Troyer, Glen



Tucker, Bonnie



Turner, Leo



Valdez, Valdemar



Van Horne, Michael



Waddington, Ralph



Walkup, Shirley



Watson, Nadine



Welker, Janice



Wells, Morgan



Welty, Don



Westerbuhr, Larry



Weston, Bernice

## Sophomores



Wetovick, Gerald

Wilson, Nathan

Winfrey, Janice



Whiting, Marcelyn

Wyckoff, Elsie

Yant, Ginger



John Cronin was presented the first degree of KSTC's golden anniversary year.



# Freshmen



Abraham, Richard  
Acker, Shirley

Ackerman, Garry  
Adcock, Carolyn

Aden, Shirley  
Allan, Shirley

Altmaier, Connie  
Ames, Keith

Anderson, John  
Anderson, Muriel

Anderson, Theodore  
Armstrong, Eugene

Armstrong, Sandra  
Aspegren, Carolyn

Aspegren, Colleen  
Aten, Carmen

Auble, Arvilla  
Auble, Don

Baack, Donald  
Bailor, Richard

Banks, Vicki  
Bashford, Marvin

Beavers, Bill  
Becker, Bertha

Beckmann, Juliann  
Beilke, John

Belmudex, Mose  
Bennett, Merle

Berggren, Rose  
Berkheimer, Robert

Bertrand, Adrianne  
Bigge, Larry

Birginal, William  
Bishop, Joyce

Black, Dale  
Blackburn, Charles





# Freshmen



Boehmer, Marvin  
Bomberger, Phyllis



Bonnell, Shirley  
Bowman, Gilbert



Boyd, William  
Braun, Louise



Brecks, Ethel  
Bristol Stella



Brodine, Marilyn  
Broman, Mary



Brown, Joylyn  
Brown, Keith



Burwell, Terry  
Carlson, Arla



Carlson, Dwaine  
Carr, Phyllis



Carrico, Beverly  
Caspers, Karen

Chasley, Doris  
Christ, Joan

Christensen, Beverly  
Coble, Harold

Cornish, Eldon  
Crowley, James

Cudaback, Elmer  
Daily, Monte

Dantz, Paul  
David, Carolyn

Denman, Shirley  
Denney, Roger

Devine, Mary  
Donaho, Bonnie

Douglas, Pat  
Dowse, Kelvin

Draucher, Carolyn  
Dunham, Joyce





## Freshmen



Eacker, Marilyn  
Eckhout, Bernadine



Ecklund, Berneice  
Ecklund, Berneita



Ehlers, Donald  
Ehly, Ewald



Ely, Arlis  
Envick, Robert



Everts, Warren  
Ewoldt, Robert



Farm, Burdette  
Farm, Allan



Farrar, Roger  
Felker, Lewis



Fleming, John  
Forbes, Shirley



Franke, Margot  
Garretson, Stanley



Gaston, Mervie  
Gehre, Leonard



Genereux, Irma J.  
Gilgren, Gordon



Glade, Dixie  
Goa, William



Golus, Ronald  
Goodchuck, Gary



Graff, Genevieve  
Greer, Wardell



Griess, Joanne  
Haberman, Joan



Hackett, Jay  
Hagadone, Don



Hale, Vivian  
Hamar, Dwayne



Hamilton, Maren  
Hammond, Charles





# Freshmen



Hanes, Nancy  
Handel, Nelda



Hanlon, Mary  
Hansen, James



Hardin, Donald  
Hardwick, William



Harris, George  
Harrold, Leona



Hehnke, Robert  
Hein, Donald



Helser, Marcella  
Hergott, Eleanor



Hervert, Norma  
Hervert, Richard



Herzog, Edward  
Hill, Nancy



Hillmer, Adell  
Hircock, Billy

Hirst, Donna Jean  
Hoeltke, Gary



Hokom, Marvin  
Holliday, Dean



Holzfaster, Geraldine  
Hopwood, Rolland



Hornback, Gerald  
Huber, Dawson



Hulshizer, Dorris  
Humiston, Ronald



Huffman, Illene  
Hust, Mary Lou



Hyde, David  
Hyde, Dale



Ihm, Bill  
Jack, Joe



Jamison, Roselyn  
Jelden, Dean



# Freshmen



Jenkins, Charles



Jenkins, Jill



Jensen, Harlan



Johnson, Bob Lee



Johnson, Gayle A.



Johnson, Loiette



Johnson, Marilyn



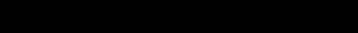
Johnson, Marjorie



Johnson, Shelia



Joines, Lueen



Jungmeyer, Joan



Kapperman, Lavila



Karre, Fred



Karsting, Glen



Kaylor, Keith



Kegley, Ronald



Keller, Janice



Kniss, Carol

Knutson, Wendell

Kilgore, Kathryn

Kivlighn, Joanne

Knapp, Gerald

Koci, George

Kohn, Douglas

Kort, Wesley

Kring, Dean

Kroeger, Barbara

Labart, Donna

Lacker, Meldon

Laird, Leo

Lange, Clarence

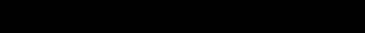
Lapp, Margaret

Larreau, Faye

Larsen, Linda

Larson, LeRoy

Lawrence, Billy





## Freshmen



Leder, Sharalyn  
Lees, Betty



Leabee, Dan  
Lewandowski, Al



Lewis, Richard  
Luce, George



McConkey, Richard  
McElroy, Melvin



McFarland, James  
McInnis, Kenny



McKibbin, Larry  
Mangan, Margot



Marsh, Donna  
Martin, Donna



Mattson, Clark  
Maxwell, Richard



Menagh, Isabel  
Merryman, William



Messman, Ron  
Meyer, Eleanor



Meyer, Jacquelyn  
Meyer, Ruth



Miller, Douglas  
Milne, Sue



Misener, Irene  
Mitchell, Joyce



Modrell, James  
Moes, Lucille



Mohler, Jerry  
Molley, Bernard



Moody, Gene  
Moor, Burdette



Morris, Roger  
Morris, Thomas



Mosel, Larry  
Mousel, Marie



# Freshmen



Muehling, Eldon  
Mueller, Carl

Mumford, Delores  
Munson, Donald

Nekuda, Don  
Nelson, Donna

Nelson, Kay  
Nelson, Ronald

Neujahr, Janice  
Nickerson, Barbara

Nickman, Eugene  
Nicodemus, Marci

Nilson, Mark  
Novy, Lyman

Olson, Karen  
O'Neill, Donald

Osmera, Alvin  
Ortgiesen, JoAnn

Osterhoudt, Elaine  
Ott, Patricia

Otto Paul  
Ottum, Donna

Owens, Steve  
Paitz, Monica

Palmer, Janice  
Patsios, Nick

Patton, Frank  
Pavelka, Edwin

Peister, Paul  
Peters, Bob

Peterson, Richard  
Pflaster, Alvie

Piskorski, John  
Piskorski, Martin

Plettner, Glenn  
Pollatt, Erin





# Freshmen



Pottinger, Robert  
Pramberg, Duane



Purintun, Sharon  
Pursel, Carol



Quinn, Leslie  
Rahmeyer, Elnora



Ramsey, Jearld  
Reed, Marlyn



Reicks, Charles  
Reinertson, Marilyn



Richardson, Marvin  
Richter, Joan



Ricketts, Marilyn  
Roberts, David



Robinson, Carolyn  
Robinson, Frank



Rockwell, Barry  
Rohrs, John



Rolland, Yvonne  
Ronne, Delores



Rork, Alita  
Rowland, John



Ruebsamen, Merna  
Russell, Jessie



Rutt, Charlene  
Ruybalid, Evelyn



Sanders, Donna  
Sawyer, Jerry



Scheirman, Barbara  
Schmidt, Harry



Scoville, Robert  
Siebecker, Thelma



Simon, Sharon  
Sitorius, Howard



Sitzman, Shirley  
Slattery, Larry



# Freshmen



Slingsby, Bernard  
Smets, Jim



Smith, James  
Smith, Janice



Smith, Jean  
Smith, Roger



Smith, Shirley  
Soffley, Beverly



Spargo, Richard  
Spray, Mary



States, Jerry  
Stear, Sharon



Sterling, Riley  
Steward, Marilyn



Stransky, Marlene  
Stobbe, Janine



Stolz, Paul  
Stone, Raymond

Stone, Leo  
Strong, Lynn

Stubbs, Keith  
Surber, Larry

Surface, Bill  
Swift, Ralph

Teahon, Hubert  
Tegler, Patricia

Teter, John  
Thomas, Coleen

Thompson, Loren  
Tilgner, Patricia

Tilmanis, Agate  
Timmerman, Larry

Tinker, Charles  
Titterington, James

Trotter, James  
Tucker, Lawanne



# Freshmen



Turnbull, Danny  
Urwiller, Stanley

Van Camp, Karen  
Van Dyke, Maurice

Vist, Donna  
Viren, Barbara

Von Ohlen, Betty  
Walters, Ronald

Welte, Marjean  
Whartman, Gordon

White, Catherine  
Wilkee, Eldon

Williams, Leslie  
Williams, Nadia

Wilmot, Duane  
Windels, Donna

Wise, Nancy  
Witt, Paul

Witters, Jeannette  
Wittrock, Art

Woodruff, Shirley  
Wurdeman, Norine

Wyatt, Rose  
Yost, Janet

Zabrzewske, Mary  
Ziegenbein, Bonnie

Zimmerman, Neva  
Zink, Arden

Zubrod, Ronald  
Hammond, Earl

Steward, Shirley





## Second Semester Students



Beishline, Harold  
Bradley, Jacqueline

McCampbell, Roger  
Monasmith, Thomas



Brown, J. C.  
Chambers, Allyn

Radford, Rex  
Rasmussen, Bob



Dady, Lloyd  
Danielson, Don

Raveling, Goldie  
Rolfsmeyer, Dean



Ferguson, Vernon  
Haile, Jack

Schlootman, Elnora  
Sorensen, Willis



Hart, Lyle  
Helmuth, Nancy

Sundermeier, Marilyn  
Trindle, John



Jones, R. L.  
Lehmann, Sherman

Welker, Richard  
Westesen, John



Lewis, Leander  
Lowell, Melvin

Whitcher, Charles  
Wink, John



Kirwan, Emil  
Kirwin, Myron

Wolf, Norma



Korcek, Fred  
Korcek, James



Dr. Leo Thomas **(above)** converses with students about registration problems. The Metronomes **(right)**, Freshmen girls quartet, have made many appearances on the campus during the year. Members of the quartet are Linda Larsen, Joyce Bishop, Margot Franke, and Joyce Mitchell. Colhecon members **(below)** baked the cake that was served at their annual wedding. Miss Garrett and Mrs. Mantor, assisted by Amy Dusek, did the serving for the event.







# ORGANIZATIONS







**STUDENT COUNCIL**—TOP ROW: Jim Crowley, Bud Farm, Ardyce Carroll, Jack King, Bob Gell, Robin Croissant, Jane Anderson. BOTTOM ROW: Sharon Glenn, Shirley Denman, Mr. Danker, sponsor; Dean Wise, Roger Dahlin, Mary Alexander, RoDonna Lindholm, Miss Klein, sponsor; Jo Anne Meyer, Rosie Laguna.

## Student Council

The weekly Monday meetings of the student council are held in the Blue and Gold room of the student union with Roger Dahlin presiding.

Along with the honor of being a council member goes a great deal of responsibility. Council members strive to strengthen the cordial relationship among students and between faculty and students. They study and attempt to solve, for the benefit of all students, the various problems that arise during

the course of the school year.

The student council is responsible for numerous campus activities including Homecoming, the all-college dance, Friday night entertainment for the student body, pep rallies, Bronco Days, and other activities.

Miss Dorothy Klein and Mr. Del Danker are faculty sponsors of the student council. Elected to head the council next year are Dean Wise as president and Doyle Howitt, vice-president.



**STUDENT COUNCIL OFFICERS AND SPONSORS:** (above) Mr. Danker, sponsor; Dean Wise, treasurer; Roger Dahlin, president; RoDonna Lindholm, secretary; Mary Alexander, vice-president; Miss Klein, sponsor.

A group of Student Council members leaving the Student Union after the regular Monday meeting.

**STUDENT UNION ACTIVITIES COMMITTEE:** Marilyn Whitney, Art Embree, LaVonne Shaffer, Mrs. Webster, sponsor; Fred Kempf, Lexie Clark.





## Xi Phi



**XI PHI**—TOP ROW: Mike Yanney, Bill Kalous, Virginia Duncan, RoDonna Lindholm, Gary Thomas, Bob Dick, Mr. Holmgren, sponsor. SECOND ROW: Patsy Johnson, Jo Anne Meyer, Marion Auble, Colleene Cline, Carol Rathe, Ella Douglas, Janet Mitchell. BOTTOM ROW: Miss Williams, sponsor; Pat Roucis, Shirley Magette, Erna Jensen, Marilyn Whitney, Mary Talbert, Doris Hunse, Duane Shackelford.

## Delta Omicron

**DELTA OMICRON**—TOP ROW: Jane Anderson, Carol Rathe, Mrs. Hansen, sponsor; Betty Mundt, Vera Collison. BOTTOM ROW: Carole Anderson, Marilyn Whitney, Ruth Barker.





**PI OMEGA PI**—TOP ROW: Mr. Jester, sponsor; Don Welty, Bill Kalous, Bob Rademacher, Bob Dick, Max Dodson. SECOND ROW: Duane Shackelford, Leora Rippen, Shirley Johnson, Carol Rathe, Doris Hunse, Vera Collison. BOTTOM ROW: Connie Nordbrock, Shirley Shaffer, Charlotte Fisher, Ella Douglas, Colleene Cline.

## Pi Omega Pi

Membership in Pi Omega Pi, national honorary commerce fraternity, is bestowed upon those students in commerce who have done superior work and who have those qualities which tend to make for success in teaching.

Dinner meetings once a month have been the feature of the year's activities with

initiation ceremonies or programs of a professional nature as part of the agenda. The second annual departmental dinner was held in December.

During Christmas vacation Bill Kalous and Bob Dick were delegates to the Phi Omega Pi national convention in Chicago.





PI KAPPA DELTA—TOP ROW: Fred Kempf, Doyle Howitt, Richard Kimbrough, Mike Yanney. BOTTOM ROW: Doris Hunse, Connie Nordbrock.

## Pi Kappa Delta

Pi Kappa Delta is the honorary fraternity on the campus which recognizes and initiates outstanding members in debate and oratory.

Pi Kappa Delta members won several forensic honors during the past year. At the annual Rocky Mountain Speech Conference Meet held at the University of Denver, Bill Roach was rated superior in discussion and Dick Kimbrough won men's oratory. In the state forensic tournament Robert Pottinger captured first place in extemporaneous speaking; Dick Kimbrough was

awarded first place in men's peace oratory and Dean Hascall took second place in men's open oratory. Dick Kimbrough was rated superior and Bill Roach an excellent in discussion. Bill Roach and Dick Kimbrough, accompanied by Mr. Ahrendts, attended the Pi Kappa Delta national meet at Redlands, California.

Officers of Pi Kappa Delta are: Bonnie Tucker, President; Dick Kimbrough, Vice-President; Ardyce Carroll, Treasurer; Fred Kempf, Secretary; and Mr. Harold Ahrendts, Sponsor.

## Lambda Delta Lambda

Lambda Delta Lambda recognizes those students who have done outstanding work in the field of physical science. Each year the Epsilon chapter sponsors activities for the physical science department.

The national convention of Lambda Delta Lambda was held in Kearney in the summer of 1954. At this convention, Dr. Donald E. Fox was elected national vice-president.

### LAMBDA DELTA LAMBDA ACTIVES

—TOP ROW: Calvin DeLano, Glen Underhill, Jack Swanson, Mr. Beckman, sponsor; Mr. Larson, sponsor; Dr. Fox, sponsor. BOTTOM ROW: Miss Nelson, sponsor; Dr. Morse, sponsor; Gordon Moor, Erna Jensen, Mary Alexander.



### LAMBDA DELTA LAMBDA PLEDGES

—TOP ROW: William Brown, Gerald Wetovick, J. D. Meyer, Berl Spencer, Alan Morris, Rex Glover, Jerry Bebernes, Jim Swanson, Art Alberding. BOTTOM ROW: Bill Marlatt, Tom Chaney, Marianne Altmaier, Barbara Allmand, Sylvia Christensen, Rod Lenders.





## Kappa Pi



**KAPPA PI:** Jerry Jones, Rex McGinnis, Donna Brink, Jo Anne Meyer, Miss Larson, sponsor: Janet Mitchell, Larry Peterson, Marilyn Whitney.

## Beta Beta Beta

**BETA BETA BETA**—TOP ROW: Oren Smallcomb, Dwayne Hamar, Myron Kirwin, Bill Ihm, Don Straney, Charles Vandruff, Dayne Smith, Jerry Wetovick, John Nicholson, Dwight Hahn, Larry Westerbuhr, Robert McMahon, Gordon Moor, George Hueffle, Earl Hammond. SECOND ROW: Meldon Lacker, Duane Shackelford, Eugene Carlson, Jerry Meyer, Larry Ferguson, Bill Ahrens, Dean Wise, Huber Teahon, Alan Morris, Jerry States, Berl Spencer, Ted Anderson, Clarence Lippstreu, Erin Pollat, Anita Tilmanis, Wm. Schnackenberg, Rod Landers, Emil Kirwin, Dr. John Bliese, sponsor. BOTTOM ROW: Mrs. Hanson, sponsor: Shirley Bonnell, Berneita Ecklund, Sylvia Christensen, Marianne Altmaier, Carol Kniss, Sue Milne, Nancy Helmuth, Colleen Cline, Sharon Glenn, Janine Stobbe, Margot Mangan.





## Kappa Delta Pi

Kappa Delta Pi, honorary education fraternity, has enjoyed its second year as an organization on the Kearney State Teachers College campus. Our chapter, the Eta Phi chapter, had the extreme privilege of sponsoring a convocation during Education Week. For this convocation, Kappa Delta Pi was honored to have Dr. Harry Burke,

Superintendent of Schools, Omaha, Nebraska, as the guest speaker.

Officers of Kappa Delta Pi are: Michael Yanney, President; RoDonna Lindholm, Vice-President; Virginia Duncan, Secretary; Mrs. Edna Nigh, Treasurer; and Dr. Leona Mae Failor, sponsor.

**KAPPA DELTA PI**—TOP ROW: Amelia Novasad, Leonard Skov, Michael Yanney, Dr. Leona Mae Failor, sponsor; Gary Thomas, Bob Dick, Bill Kalous, Carol Rathe. BOTTOM ROW: Betty Hernbloom, Ellen Foth, Janet Mitchell, Doris Hunse, Patsy Johnson, Addie Lybarger, Jo Anne Meyer.







**SIGMA TAU DELTA**—TOP ROW: Pat Roucis, Tom Chandler, John DeRolf, Bob Dick, Leonard Skov, Barbara Dickerson. BOTTOM ROW: Jo Anne Meyer, Shirley Magette, Lois Hanshew, Olivene Bailey, Marilyn Whitney.

## Sigma Tau Delta

Xi Beta Chapter of Sigma Tau Delta, national honorary English fraternity, was organized in 1928 with Calvin T. Ryan as sponsor. The aim of the organization is to promote an understanding of great literature and to stress sincerity, truth, and design in writing.

The local group has fifteen members—twelve active and three associate. English majors with a scholarship average of 3.0 are entitled to active membership and English minors with the 3.0 average may become associate members.

The Antler, the only literary publication on the campus, is published by the members. The magazine consists of essays and short written sketches contributed by

both college and high school students. A special feature is the section which includes the winning essays entered in the Freshman Essay Contest. Editor of the 1955 Antler was Barbara Dickerson. Bob Dick was business manager.

Each year members and alumni of Sigma Tau Delta gather at a formal Christmas dinner. This year's guests heard Mr. C. T. Ryan speak about the hidden melodies found in the speeches of Shakespeare's non-sensical characters.

Officers of Sigma Tau Delta are: John DeRolf, President; Pat Roucis, Vice-President; Barbara Smith, Secretary; Bob Dick, Treasurer; and Shirley Magette, Historian.



## PEMM



PEMM—TOP ROW: Berneice Ecklund, Joyce Mitchell, Shirley Sitzman, Janet Yost, Faye Larreau, Berneita Ecklund. MIDDLE ROW: Phyllis Bomberger, Barbara Scheirman, Geniece Tunnell, Adell Hillmer, Carolyn Draucker, Colleen Thomas, JoAnn Brandt. BOTTOM ROW: Donna Hirst, Kay Strasburg, Jan Mitchell, Addie Lybarger, Gretchen Burgess, Miss Harriet Yingling, sponsor.

## MENC

MENC—TOP ROW: Margot Franke, Betty Mundt, Norris Augustin, Larry Collison, James Mitchell, Paul Peis:er, Lee Rippen, Carol Rathe. BOTTOM ROW: Vera Collison, Arlene Foster, Joyce Bishop, Joyce Mitchell, Linda Larsen, Carole Anderson.





## Colhecon



**COLHECON**—TOP ROW: Amy Dusek, Anne Christensen, Valetta Hunse, Monica Paitz, Delores Ronne, Sheila Johnson, Shirley Johnson, SECOND ROW: Pat Ott, Dagmar Naylor, LaVonne Schaffer, Sonja Paulsen, Marilyn Whitney, Isabelle Hoegh, Dolly Stegman, Donna Brown, THIRD ROW: Blanche Cargill, Leona Clement, Donna Nelson, Martha Hansen, Lavila Kapperman, Pat Olson, Beverly Softley, Doris Hulshizer, FOURTH ROW: Nadia Williams, Karen Caspers, Glenda Calvin, Donna Ottun, Pat Robinson, Sally Holtman, Mrs. Steinmeyer, Phyllis Carr, Marilyn Ricketts, FIFTH ROW: Marlene Fox, Ruth Ann Barker, Jackie Meyer, Janice Nurjahr, Emily Pfeister, Adrienne Bertrand, Karen Van Camp, SIXTH ROW: Marilyn Reinertson, Shirley Steward, Nancy Wise, Joan Richter, Marilyn Steward, Yvonne Rolland, BOTTOM ROW: Alice Johnson, Janice Winfrey, Joyce Springer, Marilyn Kremer.

Three former Colhecon members, Mrs. Carmen Aten Bruening, Mrs. Kay Bowman McFadden, and Mrs. Barbara Reynolds Doll, model their wedding gowns at the annual "Wedding Meeting", sponsored by Colhecon.



Colhecon, the College Home Economics club, to which any interested girl may belong, had a very successful year under the leadership of Sharron Jacobson, the president. One of the biggest events of the year was "The Wedding" which is annually held. Brides who were formerly students of K. S. T. C. model their wedding gowns. Another feature attraction was the formal Ellen H. Richards banquet held in May.



# WAA

The Women's Athletic Association of 1954-1955 provided an evening a week of fun for the girls who enjoy recreational sports.

Besides playing tournaments in each sport, we enjoyed doing hostess work to other college WAA girls.

We were hostess to a State College Playday in November in which five colleges participated. The sports consisted of volleyball, swimming, badminton, and deck tennis.

With the Christmas season in the air, we went choraling at the State Hospital, Good Samaritan Hospital, and several homes for the aged. The evenings singing closed with a chili feed.

Our WAA participated in the Spring Playday at Omaha University.

We sponsored a sports day for high school girls the last of April, which was a high success.

**WAA EXECUTIVE COUNCIL**—TOP ROW: Maxine Goudy, Joanne Kivilighn, JoAnn Brandt, Viola Krzycki, Marcelyn Whiting. BOTTOM ROW: Kay Strasburg, Gretchen Burgess, Shirley Sitzman.



**WAA**—TOP ROW: Miss Dorothy Orcutt, sponsor; Marjean Welte, Beverly Softley, Barbara Scheirman, Jo Ann Burrows, Donna Hirst. MIDDLE ROW: Marcelyn Whiting, Maxine Goudy, Gretchen Burgess, Joann Brandt, Shirley Sitzman, Joanne Kivilighn, Kay Strasburg, Viola Krzycki. BOTTOM ROW: Adell Hillmer, Colleen Aspegren, Doris Chasley, Phyllis Bomberger, Carolyn Draucker, Janet Yost, Geniece Tunnell.





## Vets Village Council



**VETS VILLAGE COUNCIL:** Dave Escritt, Don Dowhower, Mr. Stutheit, sponsor; Bob Volsteadt, mayor; Roger Dahlin, Doyle Howitt, secretary-treasurer; Richard Remy, Laird McCormick.

## Student Wives

**STUDENT WIVES**—TOP ROW: Gerri Taylor, Pat McCormick, Roma Thomas, Norma Howitt, Marjorie Engleman. SECOND ROW: Sally Dohrman, Ruby Binderup, Barbara Thurin, Patty Bennett, Neomi Hascall, Nadine Remy. BOTTOM ROW: Beverly Wise, Paddy Reeves, Betty Patsios, Barbara John, Dora Tetzlaff.



**STUDENT WIVES**—(below)—  
TOP ROW: Irma Alcorn, Bonnie Williams, Betty Hunn, Marilyn Fleming, Mimi Hueffle, Marianne Hauff, Charlene Glover. SECOND ROW: Bonnie Bubak, Marilou Dahlin, Mary Irvine, Grace McGinnis, Beverly Kimbrough, Ilene Hornback. BOTTOM ROW: Bonnie Johnson, Detta Daily, Harriett Foster, Joan Dyer, Ruthie Farm, Gerry O'Neill.





INTER-FRATERNITY-SORORITY COUNCIL—Dwaine Alcorn, Dean Wise, Gene Maxey, Ann Christensen, Jan Mitchell, Rosie Laguna, Patsy Johnson, Gary Thomas, Shirley Magette, Marion Auble.

## Inter-Fraternity-Sorority Council

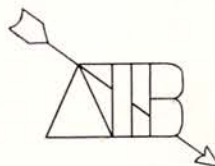
To the Inter-Fraternity-Sorority Council falls the task of controlling and regulating activities of the social fraternities and sororities. The group consists of ten members—two from each organization. The council supervises Rush Week, as well as the entire pledge period.

President	- - - - -	Jan Mitchell
Vice President	- - - - -	Gene Maxey
Secretary	- - - - -	Rosie Laguna
Treasurer	- - - - -	Patsy Johnson
News Reporter	- - - - -	Marion Auble
Sponsor	- - - - -	Mr. Roland Welch





HOLLY BALL ACTIVITIES included the crowning of Miss Mildred Wilson as Delta Sweetheart.



## Delta Pi Beta

**DELTA PI BETA PLEDGES**—TOP ROW: Nancy Hill, Diane Evans, Kay Strasburg, Sharon Simon, Sharalyn Leder, Barbara Rahrlick, Jackie Meyer. SECOND ROW: Neva Zimmerman, Jan Witters, Ruth Ann Meyer, Pat Ott, Agate Tilmanis, Norene Wordeman, Shirley Bonnell. BOTTOM ROW: Rose Berggren, Bernedine Eckhout, Shirley Acker, Marci Nicodemis, Connie Altmaier, Marilyn Reinertson.





**DELTA PI BETA ACTIVES**—TOP ROW: Norma Harris, Shirley Thurston, Helen Camaras, Ardyce Carroll, Anita Tilmanis, Sylvia Christensen, Viola Krzycki. BOTTOM ROW: Charlotte Fisher, Marianne Altmaier, Shirley Magette, Vernetta Ferris, Mary Reynolds, Mary Lou Stahn, Frances Gross.

The girls in white struck high for leadership, scholarship, and fellowship this year.

The Delta year started with a bang with Anne Christensen reigning as Homecoming Queen. Homecoming also initiated the newly organized Delta alumni association with a highly successful brunch in honor of the Delta actives.

The climax of the year was the annual Holly Ball which was attended by two hundred and seventy guests. Miss Roberts, sorority sponsor, crowned Mildred Wilson as Holly Queen.

The Deltas took pride in their participation in the Crippled Children's Lily Parade and their Christmas contributions of turkeys to homes for the aged.

Most noted on campus for their tremendous dramatic ability, the Deltas lived up to their name by presenting many outstanding skits.

Helen Camaras reigned as Mardi Gras Queen.

Sharon Glenn, Ardyce Carroll, and Robin Croissant served as Student Council representatives, and Jan Witters was elected to the Student Council for the 1955-56 school year.

Twenty-one proud and enthusiastic girls chose Delta Pi Beta as their sorority during pledge season.

Other highlights of the Delta year were the Pledge Tea given by Mrs. Dillo Webster, the spring Mother-Daughter Tea, and the spring dance.





**SIGMA THETA PHI ACTIVES**—TOP ROW: Zoe Tucker, Alice Johnson, Mary Talbert, Barbara Dickerson, Shirley Johnson, Doris Hunse, Patsy Johnson, LaVonne Sohrweid, Mary Peak. SECOND ROW: Bonnie Tucker, Amy Dusek, Arlene Foster, Jane Anderson, Donna Brink, Leora Rippen, Nila Corkill, Anita Lorenzen, Shirley Hartman, Vera Collison, Norma Burger, Sally Holtman, June Dorchman. BOTTOM ROW: Miss Ockinga, sponsor; Janice Welker, Ellen Foth, Betty Hernbloom, Lexie Clark, Carole Anderson, Barbara Manfull, Janet Mitchell, Joyce Towers, Mary Wear, Amelia Novasad, Joan Lanquist, Connie Nordbrock, Shirley Shaffer, Maxine Goudy.

## Sigma Theta Phi

The "candles of the triangle," representing the Sigma Theta Phi Sorority, glowed especially bright during the year and revealed that the meaning of Sigma Theta Phi continues to be an inspiration leading to achievement and success.

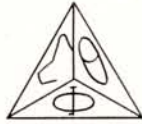
The newly organized Sigma Theta Phi choir made its debut at the Homecoming brunch. Other appearances were made at the Ranch Dance, Phi Tau Variety Show,

and the Rush Dinner.

Western decorations provided the setting for the Sigma "Rush Dance".

The highlight of the year was preference day. Forty-five girls stated their preference for Sigma Theta Phi.

The Butterfly Ball, which revealed the "Sweetheart", and the Mother's Day Tea brought to a close another successful year.



The Sigma choir provided entertainment at the Ranch Dance.

**SIGMA THETA PHI PLEDGES**—TOP ROW: Elnor Olmsted, Sharon Stear, Stella Bristol, Carole Pursel, Terry Burwell, Genevieve Graff, Linda Larson, Mary Spray, Kay Nelson, Carol Kniss, SECOND ROW: Carolyn Aspegren, Berneita Ecklund, Rene Wissbaum, Maren Hamilton, Joyce Bishop, Nadia Williams, Donna Windels, Geraldine Holzfast, Shirley Aden, Barbara Viren, Karen Olson, THIRD ROW: Jo Christ, Bonnie Donaho, Donna Martin, Karen Caspers, Merna Ruebsmen, Coleen Thomas, Margot Franke, Dixie Glade, Nancy Wise, Betty Lees, Marie Mousel, Joyce Mitchell, Jo Kivlighn, Shirley Sitzman, BOTTOM ROW: Kathryn Kilgore, Joanne Griess, Mary Ann Zabrzewske, Ilene Huffman, Elaine Osterhoudt, Marlene Stransky, Berneice Ecklund, Jill Jenkins, Shirley Denman.







Miss RoDonna Lindholm was crowned "Cinderella of 1955" at the annual Cinderella Ball.



## Zeta Chi Alpha

**ZETA CHI ALPHA**—TOP ROW: Marilyn Whitney, Marion Auble, Ruth Ann Barker, Mary Eckhout, Dollie Stegman, Virginia Duncan. SECOND ROW: Patricia Robinson, Shirley Gudgel, Barbara Anderson, Carol Rathe, RoDonna Lindholm, Sharron Jacobson. BOTTOM ROW: Rosie Laguna, Dona Scarborough, Jo Anne Meyer, Donna Boggs, Marlene Fox, Blanche Cargill.





**ZETA CHI ALPHA PLEDGES**—TOP ROW: Bonnie Ziegenbein, Diane Ingram, Jean Smith, Colleen Aspegren, Adell Hillmer, Glenda Calvin. SECOND ROW: Sheila Johnson, Joylyn Brown, Phyllia Carr, Karen Van Camp, Dorris Hulshizer, Beverly Christensen. BOTTOM ROW: Cherie Rumbleck, Marilyn Johnson, Marilyn Steward, Loiette Johnson, Marilyn Ricketts.

The Zeta Chi Alpha sorority members once more exemplified the meaning of their emblem—friendship, leadership, and knowledge.

Homecoming was the first outstanding event. "Gone With the Wind", was the theme of the banquet which was held for the returning alumni. The float, "Singing in the Rain," was entered in the Homecoming Parade. One of the sorority members, Marilyn Whitney was one of the Homecom-

ing attendants.

Miss RoDonna Lindholm was crowned "Cinderella of 1955", at the annual Cinderella Ball held at the Crystal Ball Room.

Eighteen girls chose the Zeta's as their sorority at formal initiation. The sorority sponsored a balloon bust at the Mardi Gras.

The Spring formal dance, Mother-Daughter Tea, and slumber party brought the close to a very successful year.





**CALEDONIAN ACTIVES**—TOP ROW: Thane Hascall, Art Alberding, Tom Chaney, Bill Kalous, Royal Sand, Russ Meyer, Art Embree. SECOND ROW: Roger Dahlin, Jack Nellson, Dean Wise, Dwaine Alcorn, Jim Wheeler, Bruce Lindly, Jerry Meyer. THIRD ROW: Don Jardon, Kenneth Johnson, Lee Holm, Ivan Henderson, Gary Anderson, Gordon Moor, Lyle Whitesel. BOTTOM ROW: LaVerne Robertson, J. D. Meyer, Jim Nelson, Ron Patterson.

## Caledonian

The Caledonian Fraternity has had a very successful year. Our first triumph of the year came with the winning of the Homecoming float contest. The theme of the float was "From Here to Eternity." This year's homecoming banquet was held at the Kearney Country Club where better than one hundred and twenty active Caledonians and alumni met and discussed fraternity problems.

The last function of the Caledonian fraternity during the first semester was the annual Pre-Rush Dance. More than one hundred couples saw Mrs. Connie Nordbrock crowned "Caledonian Sweetheart" during intermission at the Crystal Ballroom of the Fort Kearney Hotel.

Officers for the first semester were: Robert Osterlund, President; Dean Wise, Vice-President; James Nelson, Secretary; and Thomas Chaney, Treasurer.

The second semester activities were highlighted by two events. Pledge season took hold soon after the second semester began. The Caledonian Fraternity was fortunate in getting twenty-seven young men to bolster their ranks. Our co-sponsor, Mr. Warren Messman, was made an honorable member of the fraternity. The second important event was the annual "Bowery Ball."

Officers for second semester were: Dean Wise, President; Ronald Patterson, Vice-President; Lyle Whitesel, Secretary; and Arthur Alberding, Treasurer.



Time out for eats at the smoker!

**CALEDONIAN PLEDGES**—TOP ROW: Bill Rauert, Leo Stone, Charles Hammond, Roger Morris, Don Main, Joe Jack, Burdette Moor. SECOND ROW: George Hueffle, Jim Kruger, Steve Owens, Keith Stubbs, Dick Bailar, Lewis Felker, Art Wittrock, Burdette Farm, Dale Bubak. BOTTOM ROW: Marvin Hokum, Bernard Molley, Kenneth Main, Bill Shaffer, Bill Goa, Wes Kort, Ron Walters.







## Phi Tau Gamma

Intermission activities of the Winter Ball included the presentation of Miss Betty Hernbloom as Phi Tau Gamma Sweetheart of 1954-55.

**PHI TAU GAMMA PLEDGES**—TOP ROW: Gary Ackerman, Dean Jelden, Alvie Pflaster, Don Hein, Dale Taylor, Jearld Ramsey, Jim Crowley, John Rowland. SECOND ROW: Jerry States, Bill Beavers, Bill Tjaden, Jay Hackett, Dan Turnbull, Al Farm, Bill Surface. THIRD ROW: Dale Hyde, Clayton Scott, Bill Bowers, Melvin McElravey, Clark Mattson, Alvin Osmera. BOTTOM ROW: Ewald Ehly, Leon Johnson, Roger Farrar.







**PHI TAU GAMMA**—TOP ROW: Larry Collison, Mike Yanney, Larry Hemmett, Jim Mitchell, Kyler Nelson, Dayne Smith, Norris Augustin, Larry Johnson. SECOND ROW: Don Hemji, Dwight Hahn, Alan Morris, Jack King, Ron Bickford, Dave Mills, Jerry Bebernes, Jay Jamison. THIRD ROW: Jim Buterbaugh, Larry Ferguson, Fred Kempf, Jerry Jordan, Gary Thomas, Rod Campbell, Dave Brink. FOURTH ROW: Gene Maxey, Jim Sanford, Bob Miller, Rex McGinnis, Bob Rademacher. BOTTOM ROW: Jack Stransky, Duane Shackelford, Don Ayres, Don Straney, Bob Stemper.

The year 1954-55 was one of prominence for the members of the oldest fraternity on the campus, Phi Tau Gamma.

First semester activities included Homecoming and the annual Winter Ball. The Phi Tau Float in the Homecoming parade was built around the theme "Rocket to the Moon;" the annual Homecoming banquet was held at the Fort Kearney Hotel. Sam Donaly provided the music for the Winter Ball. At this dance, Miss Betty

Hernbloom was presented as Phi Tau Gamma Sweetheart of 1954-55.

One of the highlights of second semester was preference day. Twenty-nine men stated their preference for Phi Tau Gamma.

Phi Tau Gamma sponsored a variety show at the Mardi Gras.

"Aquatic Fantasy" was the theme of the biggest social event of the year, the Spring Formal Dance. Tommy Morgan provided the music for this annual event.





INDEPENDENT STUDENT ASSOCIATION—TOP ROW: Donna Brown, Pat Olson, Ronald Schuller, Glen Underhill, Bill Patsios, Larry Peterson, Stanley Urwiller, Bob Gell, Paul Stolz, Susan Day, Pearl Dyer. SECOND ROW: Barbara Smith, Monica Paitz, Don Tomlinson, Dallas Sinnen, Charles Jenkins, Maurice Nelson, Bob Dick, Max Dodson, Bill Marlatt, Gerald Nelson. BOTTOM ROW: Peggy Scranton, Margaret Lewis, Goldie Raveling, Isabelle Hoegh, Mary Alexander, Ella Douglas, Erna Jensen, Anne Underwood.

## Independent Students Association

The Independent Students Association, organized in 1953, began the year with a picnic at Cottonmill Lake. It held an alumni breakfast on homecoming and entered the

float "Moulin Rouge", in the Homecoming parade. It later sponsored a reception for freshmen and new students at Case Hall.

Highlight of the year's activities was the Gypsy Trail Part in February with its colorful and varied entertainment against a background of rustic scenery. The merry-makers seated themselves on logs surrounding a simulated campfire to enjoy the refreshments. The coming of warm weather was heralded by a bag-buy and treasure hunt on Kilgore Island.

Independents went national in '55, joining forces with the Independent Students Association. The Kearney chapter sent a delegation to the nation convention at Fort Collins, Colorado, in April.

Everyone had fun at the Gypsy Trail party!





## Newman Club

Newman Club, the organization for Catholic students on the campus, enjoyed another eventful year.

The Newman Club was founded by Cardinal John Henry Newman for the purpose of allowing Catholic students to organize on a secular campus. The meetings of the club are held semi-monthly and various programs are carried out with the officers presiding. The officers for the second semester are: Maynard Wichman, president; Jerry Wetovick, vice-president; Rene Wissbaum, secretary; Barbara Rahrlick, treasurer; and James Smith, news reporter.

Activities form a balance of religious,

intellectual and social programs through group communions, discussion clubs, retreats, lectures and debates, parties, dances, picnics, and sports. Formal initiation, the Cardinal Newman Honorary Banquet, and the Senior Banquet are a few of the highlights of the group activities.

Each year a member of the club is awarded the John Henry Newman Honorary Society pin for outstanding work in the club.

The chaplain of the Newman Club is Monsignor Francis J. Tschida, pastor of Saint James Catholic Church in Kearney. Mr. George Whitfield is sponsor.

**NEWMAN CLUB**—TOP ROW: Ron Zubrod, Bob Radke, Leo Laird, Keith Brown, Bob Stemper, Jim Crowley, Don Dowhower, Ronald Schuller, Jerry Wetovick, Richard Peterson, Maynard Witchman. SECOND ROW: Monsignor Tschida, Jill Jenkins, Jo Christ, Jackie Meyer, Mary Manhart, Marilyn Joyce, Mary Divine, Marjean Welty, Mary Hanlon, Irma Genereux, Dorothy Kublish, Earl Hammond, Mr. Whitfield, sponsor. BOTTOM ROW: Rene Wissbaum, Connie Altmaier, Viola Krzycki, Barbara Rahrlick, Mary Ann Zabrzewske, Mary Talbert, Geraldine Holzaster, Norma Hervert, Marianne Altmaier, Eleanor Hergott, Marie Mousel, Monica Paitz.





# YWCA

YWCA—TOP ROW: Gwen Hanley, Shirley Steward, Marilyn Brodine, Janet Lowe, Marilyn Steward, Dollie Stegman, Shirley Woodruff, Susan Ann Day, Nelle Kirkwood, Clara Ockinga. SECOND ROW: Colleene Cline, RoDonna Lindholm, Delores Ronne, Geniece Tunnell, Ella Douglas, Yvonne Rolland, Pat Robinson. BOTTOM ROW: Betty Mundt, Joan Thurman, Patricia Olson, Janice Palmer, Erna Jensen, Lucy Anderson, Sally Holtman, Dorothy Williams.





**YWCA CABINET**—TOP ROW: RoDonna Lindholm, Betty Mundt, Dollie Stegman, Gwen Hanley, Miss Kirkwood, sponsor. SECOND ROW: Colleene Cline, Ruth Ann Barker, Erna Jensen, Ella Douglas, Valetta Hunse. BOTTOM ROW: Sally Holtman, Lucy Anderson, Pat Robinson, Amy Dusek, Pat Olson.

The emblem of the Young Women's Christian Association is the familiar blue triangle. The base of this triangle stands for the Y's faith in God. The two equal sides represent the social and intellectual phases of our program.

The Y.W.C.A. is an active sponsor of many events on the Kearney College campus, such as the Big-Little Sister Tea during Freshman Week to help the new girls get acquainted.

In October, Kearney State Y.W.C.A. and Y.M.C.A. were host to the Nebraska District Fall Conference. Dr. James Chubb of the Grand Island Methodist Church was the guest speaker.

One of the biggest events of the year was the second annual Mardi Gras held in February. Funds raised from the Mardi Gras are used to send students to state, district, and national Y.W.C.A. conferences. At this social event a Mardi Gras King and Queen are crowned.

Throughout the year the Y.W.C.A. is active in many projects and activities, such as a Christmas Convocation and Inter-high day dinner. The girls are very proud of the Y.W.C.A. room both as a place of worship and social gatherings.

The officers of the Y.W.C.A. are: President, RoDonna Lindholm; Vice-President, Valetta Hunse; Secretary, Carolyn Jacob; Treasurer, Pat Olson.



## YMCA



YMCA—TOP ROW: Glen Underhill, Gary Anderson, Gerald Nelson, Bob Dick, Maurice Nelson, Charles Jenkins. BOTTOM ROW: Mr. Larson, sponsor; Royal Sand, Stanley Urwiller, Don Tomlinson, Lyman Novy.

## LSA

LSA—TOP ROW: Milton Johnson, Larry Westerbuhr, Sherman Lehman, Don Baack, Dwight Hahn, Don Hemje. SECOND ROW: Gary Anderson, Dean Jelden, Marlene Hooper, LaVonne Shaffer, Janice Keller, Leon Johnson. BOTTOM ROW: Charlene Rutt, Juliann Beckman, Betty Mundt, Donna Windels, Joan Jungmeyer, Barbara Viren, Norma Burger.





## IVCF



IVCF—TOP ROW: Glen Underhill, Sam Escritt, Harold Anders, Jack Swanson, Ray Alexander, Mark Nilson, Tom Chaney. SECOND ROW: Bob Foster, Rex Glover, Susan Day, Isabelle Hoegh, Peggy Scranton, Muriel Anderson, Sharon Purinton, Jim Swanson. BOTTOM ROW: Pat Olson, Joyce Springer, Marilyn Kremer, Arla Carlson, Patty McLaughlin, Janice Winfrey, Blanche Cargill.

## K Club

K CLUB—TOP ROW: Bill Kalous, Glen Rohde, Leland Thurin, Jim Kruger, Stu Thorell, Jim Thorell, Gayle Johnson, Wes Kort, Bob Stemper, Jack Swanson, Jim Sanford, Larry Hemmett, Larry Johnson, Dayne Smith. SECOND ROW: George Abbott, Steve Owens, Morgan Wells, Joe Jack, Gene Armstrong, Bill Moss, Alan Morris, Ray Adams, Larry Mosel, Harold Bennett, Rod Campbell, Al Lewandowski, Stan Garretson, Ron Roggy, Bill Surface. BOTTOM ROW: Dave Mills, Dick Baker, Doyle Fyfe, Don Dyer, Don Straney, Don Ayres, Joe McFarland, Russ Pope, Clayton Scott, Bill Bowers, Dale Bubak, Milton Johnson, Dale Taylor, Dave Brink, Charlie Foster.







**WOMEN'S LEAGUE COUNCIL**—TOP ROW: Marion Auble, Zoe Tucker, Margot Franke, Valetia Hunse, Betty Mundt, Susan Day, Dagmar Naylor, Miss Pettit, Associate Dean of Students. BOTTOM ROW: Connie Altmaier, Maxine Goudy, Betty Lees, Vera Collison, Jill Jenkins, Barbara Manfull.

## Women's League

The College Women's League, an organization for all women on the campus, met to enjoy entertainment as well as obtain helpful hints. A picnic for Freshman girls, a winter style show, a discussion of floral arrangements, a bridal review, and a mother-daughter tea made up this year's programs.

The Women's League Council, the gov-

erning body of the league, consists of representatives from classes, dormitories, religious organizations, girls that live in town and officers.

Officers of Women's League are: Vera Collison, president; Dagmar Naylor, vice-president; Marion Auble, secretary, and Valetta Hunse, Treasurer.

## Men's League

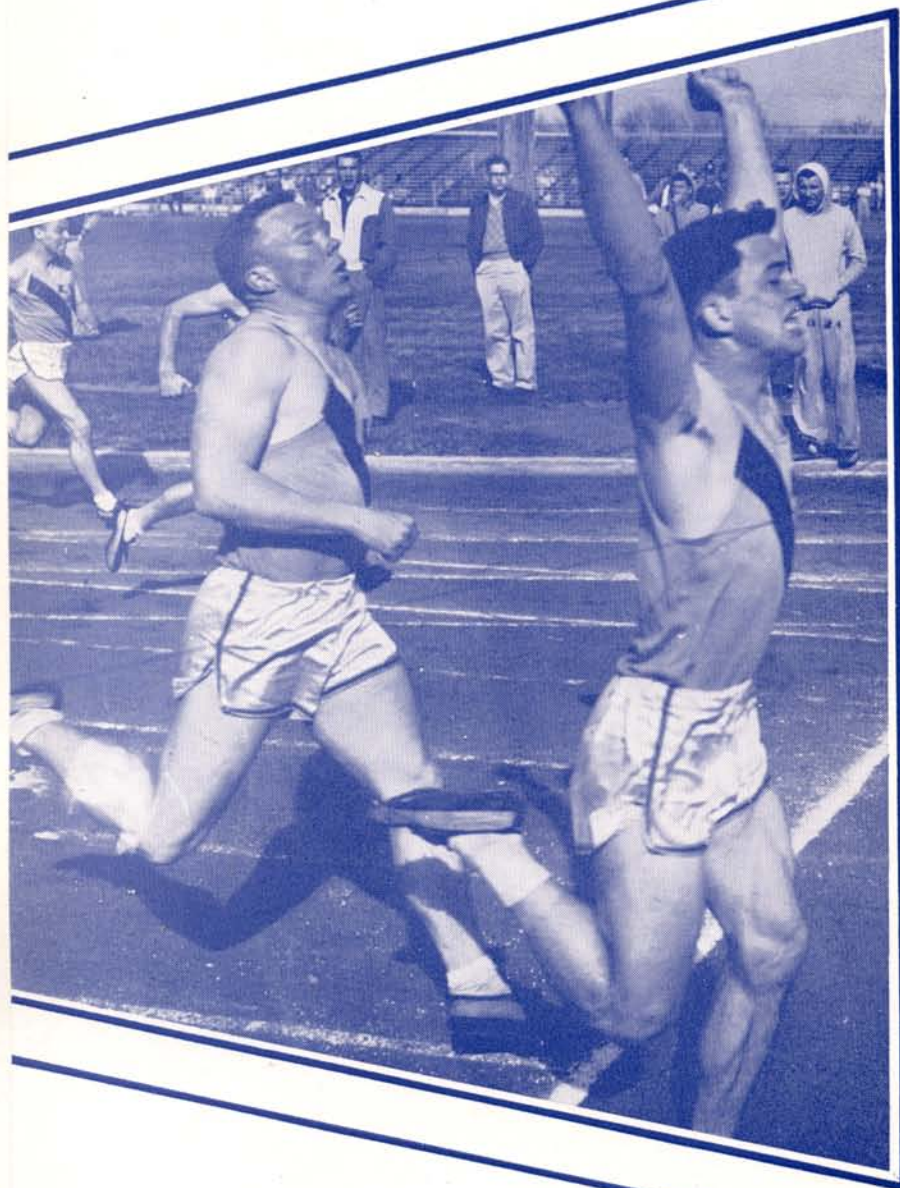
Men's League, the organization of all men on the campus, was active this year under the leadership of Gene Maxey. Other officers elected with Gene were Bob Miller, vice-president; Duane Shackelford, treasurer, and Bob Stemper, secretary. B. F. Stutheit, Dean of Men, acted as sponsor for the group.

Among special activities sponsored by the league was a student loan fund. Men's League acted as hosts to the freshmen during Freshman Week, which is scheduled each September to acquaint newcomers to the friendly college, with the essentials of college life.



MEN'S LEAGUE OFFICERS: Bob Stemper, secretary; Bob Miller, vice-president; Gene Maxey, president; Duane Shackelford, treasurer.





# SPORTS

The word "SPORTS" is printed in a bold, blue, sans-serif font. It is centered horizontally and partially intersected by two parallel blue lines that run diagonally from the bottom left towards the top right. The lines cross behind the letters, creating a sense of depth and movement.





Preacher Marvin Franklin  
Head Coach



Leland Copeland  
Assistant Coach

## Preacher Leads Antelopes to 5-3-1 Record

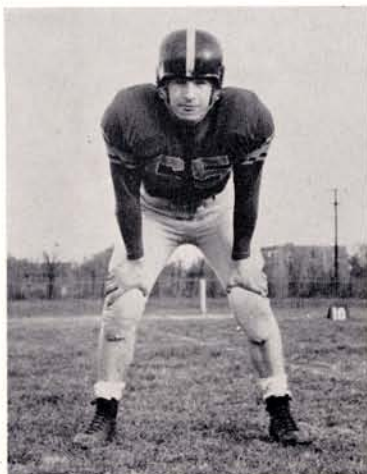


Jim Thorell, All-Conference Back, was one of the best runners in the N.C.C.



Dave Brink, All-Conference End for the past two years, is known for his pass catching and good defensive work.

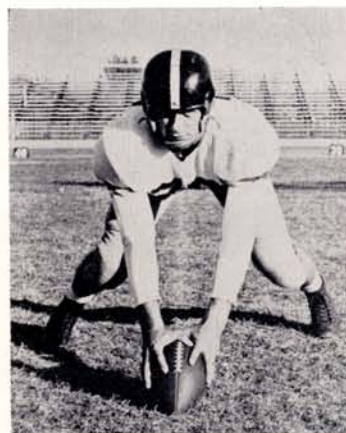




Kyler Nelson  
Guard



Ray Adams  
Back

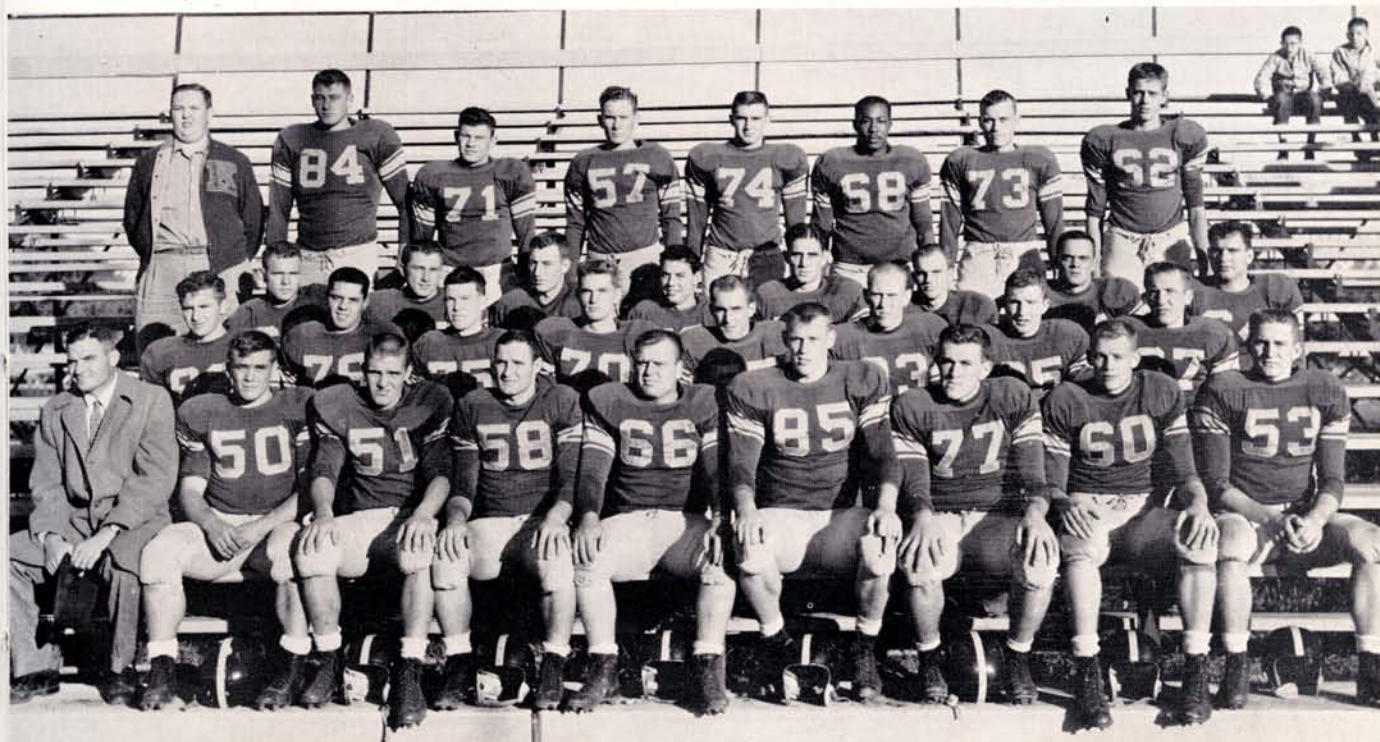


Wes Kort  
Center

The Nebraska State Antelopes found the going easier this year in their football opener as they surprised the 1953 Kansas College Champions, McPherson, with a 52-6 victory. The defense was tops and the back-field showed great improvement over the 1953 season.

The first home game was a thriller but the Antelopes found the Hastings Broncos too eager for a victory and the final score ended up 14-21. The Broncos went on to be N.C.C. Champions.

**1954 FOOTBALL SQUAD**—TOP ROW: Jack Nellson, student manager; Leland Thurin, Joe Jack, Stan Garretson, Larry Mosel, Ray Adams, Bill Moss, Jim Krueger. SECOND ROW: George Abbott, Wes Kort, Dick Baker, Dale Bubak, Gene Nickman, Jim Thorell, Wes Boggs, Dick Benson. THIRD ROW: Glen Hawley, Ron Roggy, Joe McFarland, Gene Armstrong, Dayne Smith, Bill Surface, Kyler Nelson, Bill Goa. BOTTOM ROW: Marvin Franklin, head coach; Bill Bowers, Stu Thorell, Dale Taylor, Don Dyer, Doyle Fyfe, Glen Rohde, Dave Brink, Dean Wise.







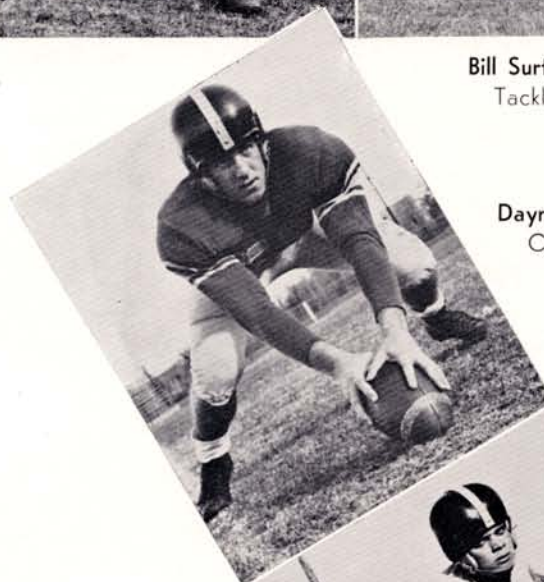
**Bill Bowers**  
Back



**Don Dyer (center)**  
Guard



**Bill Surface**  
Tackle



**Dayne Smith**  
Center



**Wes Boggs**  
Back

The next journey was to Wesleyan where the Antelopes played in mud and rain. With the loss of senior quarterback, Dale Taylor, the Antelopes received their only tie of the season, 6-6.

**Bill Goa**  
End





Jim Thorell (right) bringing down a pass in the Peru-Kearney game.



Jim Krueger  
End

The Chadron Eagles were defeated by the Antelopes with a surprising 36-7 victory. The victory was the first for the Antelopes in the N.C.C. race.



Joe McFarland  
Back

Doyle Fyfe  
Tackle

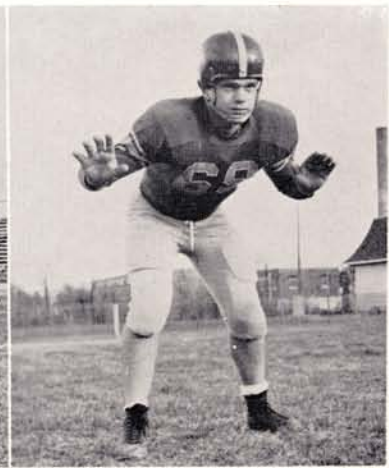
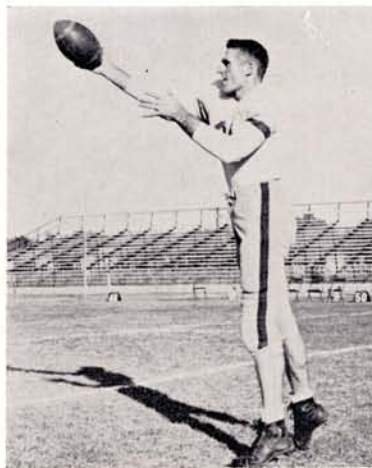


Dale Bubak  
Back  
Gene Nickman  
Guard



Glen Troyer  
End

George Abbott  
Guard



Dale Taylor  
Quarter-back



Bill Moss  
Back

The longest winning streak among the nation's college football teams came to an abrupt end when the Kearney Antelopes downed the Peru Bobcats 27-20. It was by far the best game to be seen on the college field this fall.

After the close game last year, the Kearney Antelopes took care of the Doane College team by winning over them 21-7. The team was well prepared for this game and it was one of the better victories for the Antelopes. It was played on Homecoming Day.

Glen Hawley  
Back

Glen Rohde  
Tackle



Ron Roggy  
Back

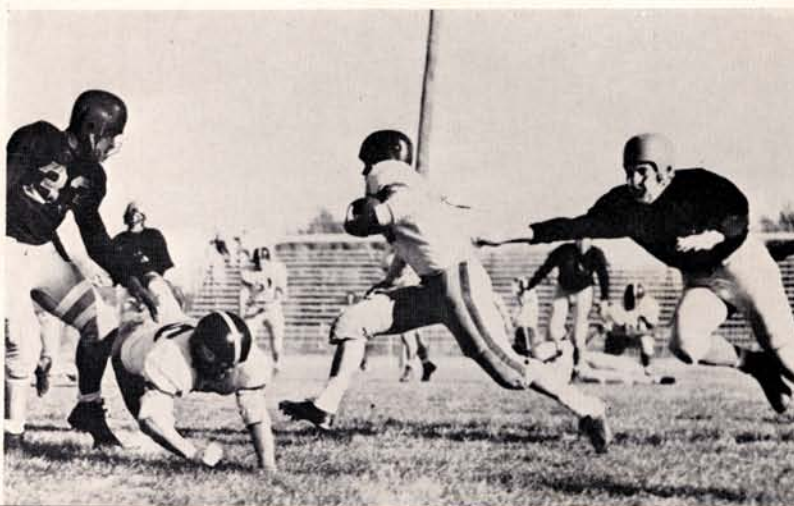
Dean Wise  
Guard



Joe Jack, Back (top), and  
Dick Baker, Back (bottom).

The Wayne State team showed too much speed and power when they came up against the Kearney Antelopes and won with a score of 21-7. Since Kearney had been picked to win, this was quite an upset.

With Kearney up and going again, they ran over Midland with a 41-19 victory. They showed great improvement over their previous defeat from Wayne.







Dick Benson  
Guard

Lee Thurin  
Tackle



The last game of the season turned out to be the roughest. Fort Hayes State was ready for every move the Antelopes made. They defeated the Antelopes 41-14.



Larry Mosel  
Guard



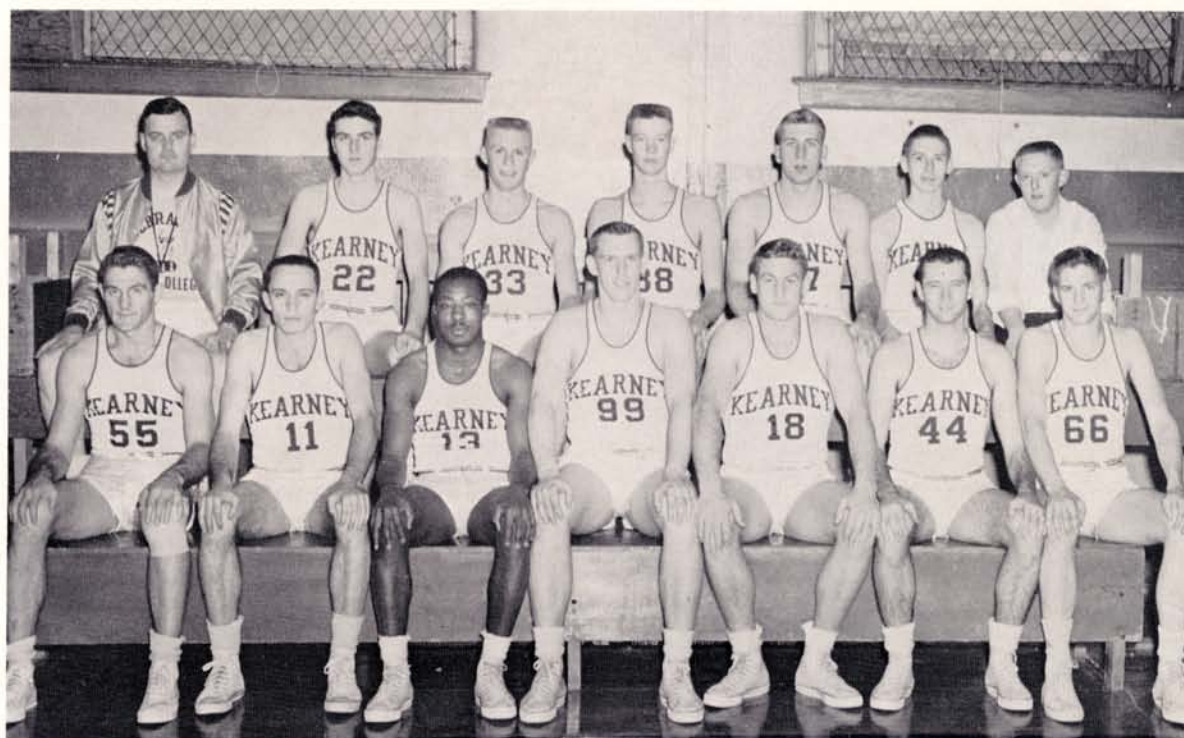
Stan Garretson  
End

Bill Morris  
Coach



## Antelopes Close Season With 6-15 Record

ANTELOPE CAGERS—BACK ROW: Coach Wm. Morris, Bill Beavers, Gayle Johnson, John Rowland, Jim Hansen, Ron Golus, Larry Johnson (Student Manager). FRONT ROW: Glen Troyer, Darrell Lloyd, Ray Adams, Doyle Fyfe, Leland Thurin, Dave Mills, Harold Bennett.







**Darrel Lloyd**  
Guard

A tall Kansas team and a large court seemed to be the combination needed to give Kearney their second loss of the season. The Antelopes only racked up 55 points to the Fort Hays team's 83.

**Jim Hansen**  
Forward



**Doyle Fyfe**  
Center

The Antelopes, paced by Darrel Lloyd, won the season opener when they rolled over Concordia Teachers with a 82-76 win. It was a spectators game with plenty of thrills for everyone.

Dakota Wesleyan proved to much for the Antelopes and the final score ended 75-66. The score was close most of the game; but in the final half Dakota Wesleyan broke away to take the lead.

At the first night of the Grand Island Tournament Kearney came through by beating Chadron in an overtime, 74-72. The second night, however, the Antelopes ran up against the Hastings Broncos and were defeated 82-54.



Gayle Johnson  
Guard

Kearney lost its game with Wayne 74-62. The clubs matched field goals but Wayne had 25 free throws compared with Kearneys 14.

Kearney started out with a lead of 30-28 at the half but went on to lose to the Midland Warriors, 69-55. The next night, in an overtime thriller, the Antelopes closed out the Warriors with a 82-70 win. In the overtime, Kearney racked up 14 points while Midland was only able to grab two.

Kearney was handed one of the worst set-backs on record when the Chadron Eagles dropped them 103-65. The next night they again lost with a score of 102-76.

Glen Troyer shooting one of his familiar jump shots.



Dave Mills  
Forward





Bill Beavers  
Guard

John Rowland  
Center



Dave Mills tries for two at the free throw line.

The top place Wesleyan Plainsmen dropped Kearney Friday night by a score of 79-59. The Wesleyan team played a rigid defense and was too tough for the Kearney club to penetrate.

The best game seen on the Antelope court this year was with the Hastings Broncos. Kearney led most of the game but with three seconds left, Hilly Beck hit from mid-court to win for Hastings, 72-71.

Glen Troyer  
Forward



Gene Armstrong  
Forward

Ron Golus  
Guard



Darrel Lloyd going in for one of his famous drive-in shots.

Doane knocked off Kearney in the final minutes of the game by a score of 65-61. The following night the Antelopes rebounded to slap Peru 85-82.

Ray Adams  
Guard





The Antelopes lost their final game of the season to the Hastings Broncos. A large migration of Kearney students witnessed this finale to the KSTC Basketball Season.

Johnson shoots for two with Lloyd ready for the rebound.



Harold Bennett  
Guard

Leland Thurin  
Center



JONES BOYS, INTRAMURAL CHAMPIONS: Dale Taylor, Dayne Smith, Dave Brink, Rod Campbell, and Milt Johnson, Doyle Fyfe, coach.

## Intramural Basketball

Jones Boys

Jokers

Cal Blues

Esquires

No-Sweats

City Slickers

Jacks

Scrubs

Ramblers

Loup Valley Boys

Campus Slop Shots

Globetrotters

Alda Tech

Cal Golds

Strays

Galloping Dominoes

Green Terrace

Band





Charles Foster  
Head Track Coach

## "It's Fun To Run With The Champions"

**TRACK SQUAD**—TOP ROW: (Student Managers) Larry Johnson, Charles Hammond, Bill Hircok, Gary Anderson, Junior Brisco, Leo Turner, Jack Stransky, Al Lewandowski, Bill Shaffer, Doc Taylor, Jack Nellson. SECOND ROW: Fred Kempf, Harold Anders, Gordon Gilgen, Edward Reiman, Gayle A. Johnson, Monte Daily, Ron Roggy, Ronald Hopwood, Roger Denny, Howard Sitorius, Duane Wilmot, Leland Thurin, Jim Crowley, Alvie Pflaster. THIRD ROW: Mike Van Horn, Wardell Greer, Dean Jelden, Dyle Buckbee, Eldon Cornish, John Rolland, Jack Haldiman, John Ernst, Dave Mills, Jerry Brady, Cliff Jacobs, Bill Surface, Marvin Rader, Stan Garretson. FOURTH ROW: Alvin Osmera, Clark Mattson, Ray Stone, Dwight Hahn, John Beilke, Ralph Swift, Joe McFarland, Ken Main, Charles Haney, Darrel Lloyd, Harold Beishline, Tom Price. FIFTH ROW: Jay Hackett, Jim Krueger, Bill Beavers, Richard Peterson, Paul Stoltz, Wm. Schnackenberg, Ray Adams, Jim Hansen, Gene Armstrong, Joe Jack, Paul Wilson, Glenn Rohde, Vernon Ferguson. SIXTH ROW: Leland Copeland, assistant coach: Kenneth Baker, Russell Pope, Gayle C. Johnson, Milton Johnson, Don Ayres, Bob Miller, Bill Moss, Don Straney, Hank Amend, Doyle Fyfe, Dave Brink, Clayton Scott, Harold Bennett, Alan Morris, Glen Troyer, Charlie Foster, head coach.





Dave Brink  
Discus



Milton Johnson  
Co-holder of Broad Jump  
record—880 Yard Relay

Gayle Johnson  
High Hurdles



Dick Baker  
Pole Vault







**Don Straney**  
NCC 440 Champion



**Glenn Rohde**  
Shot, Discus, Javelin



**Jim Hanson**  
Discus



**Don Ayres**  
880 Yard Relay  
100 Yard Dash



**Bob Miller**  
880 Yard Relay  
220 Yard Dash



Leland Thurin  
Discus, Shot, Javelin



Alan Morris  
440 Yard Dash



Vernon Ferguson  
One Mile, Two Mile

Bill Surface  
Discus

Mike Van Horn  
Low Hurdles



Joe McFarland (right)  
Pole Vault, Board Jump,  
100 Yard Dash





Bill Beavers  
Broad Jump

Jim Krueger  
High Jump, Hurdles



Bill Moss  
NCC 60 Yard Champion  
NCC 100 Yard Champion

Fred Kempf  
440 Yard Dash

Darrel Lloyd  
High Jump





**Glen Troyer**  
NCC High Jump co-cham-  
pion, Pole Vault, Javelin

**Gene Armstrong**  
Shot, Discus

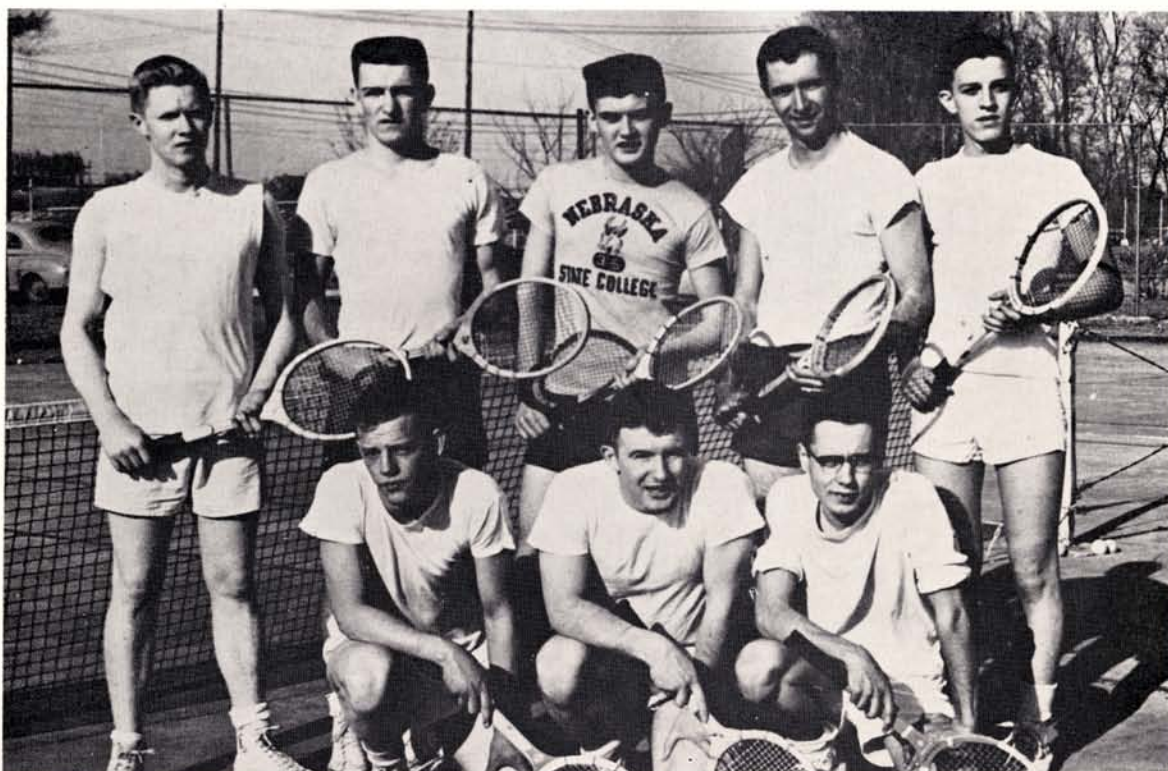


**Clayton Scott**  
National Two - Mile Cham-  
pion, NCC Mile Champion



**Doyle Fyfe**  
NCC Discus Champion,  
Shot, Javelin





## Tennis

John Snell  
Gary Smidt  
Kenneth Softley  
Dave Mills

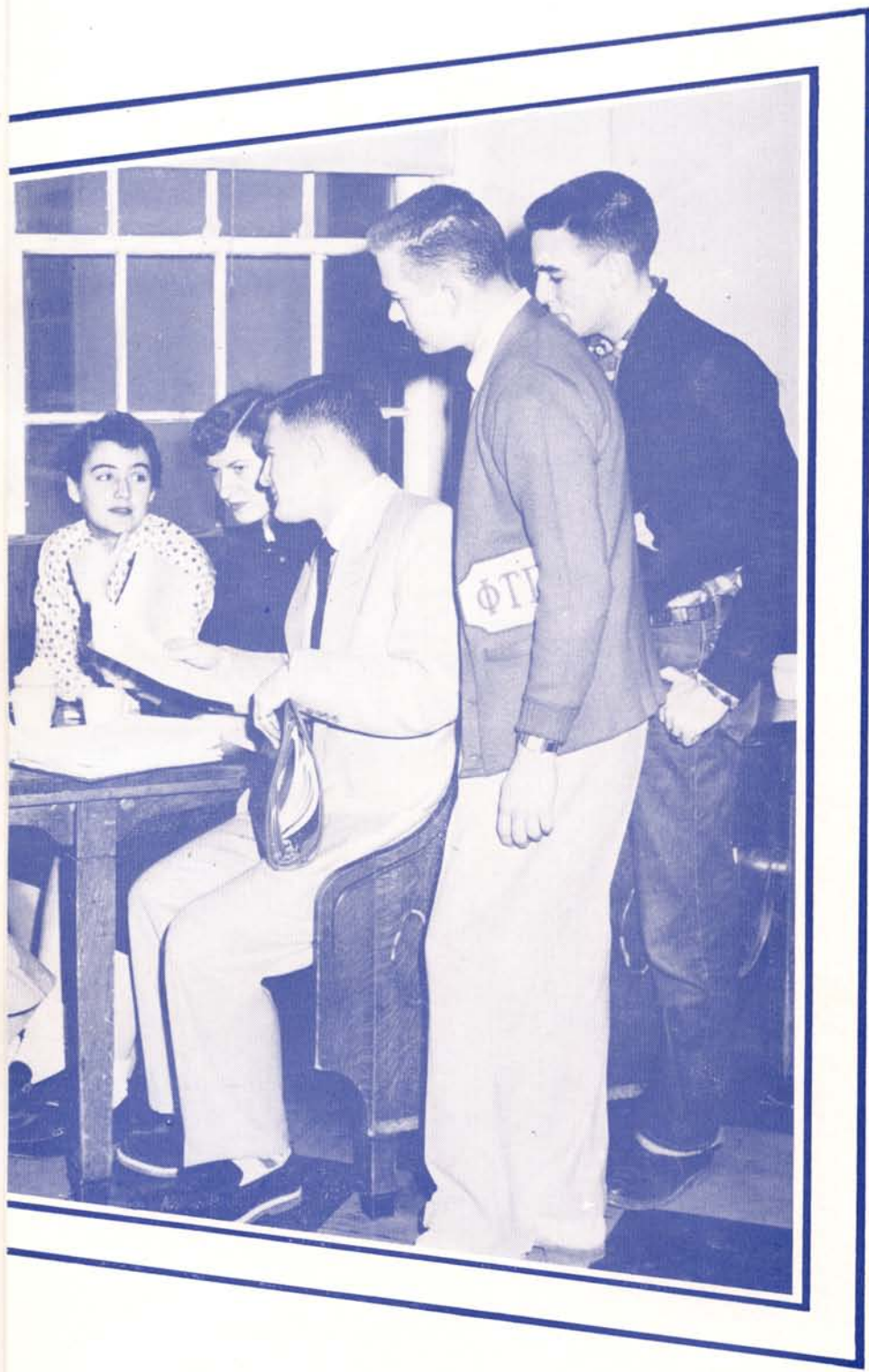
Bob Rademacher  
Jay Hacket  
Kyler Nelson  
Don Hein



STUDENT MANAGERS FOR THE ANTELOPES: Harold Bennett, Al Lewandowski, Fred Kempf, Bill Shaffer and Jack Nellson.









# ACTIVITIES



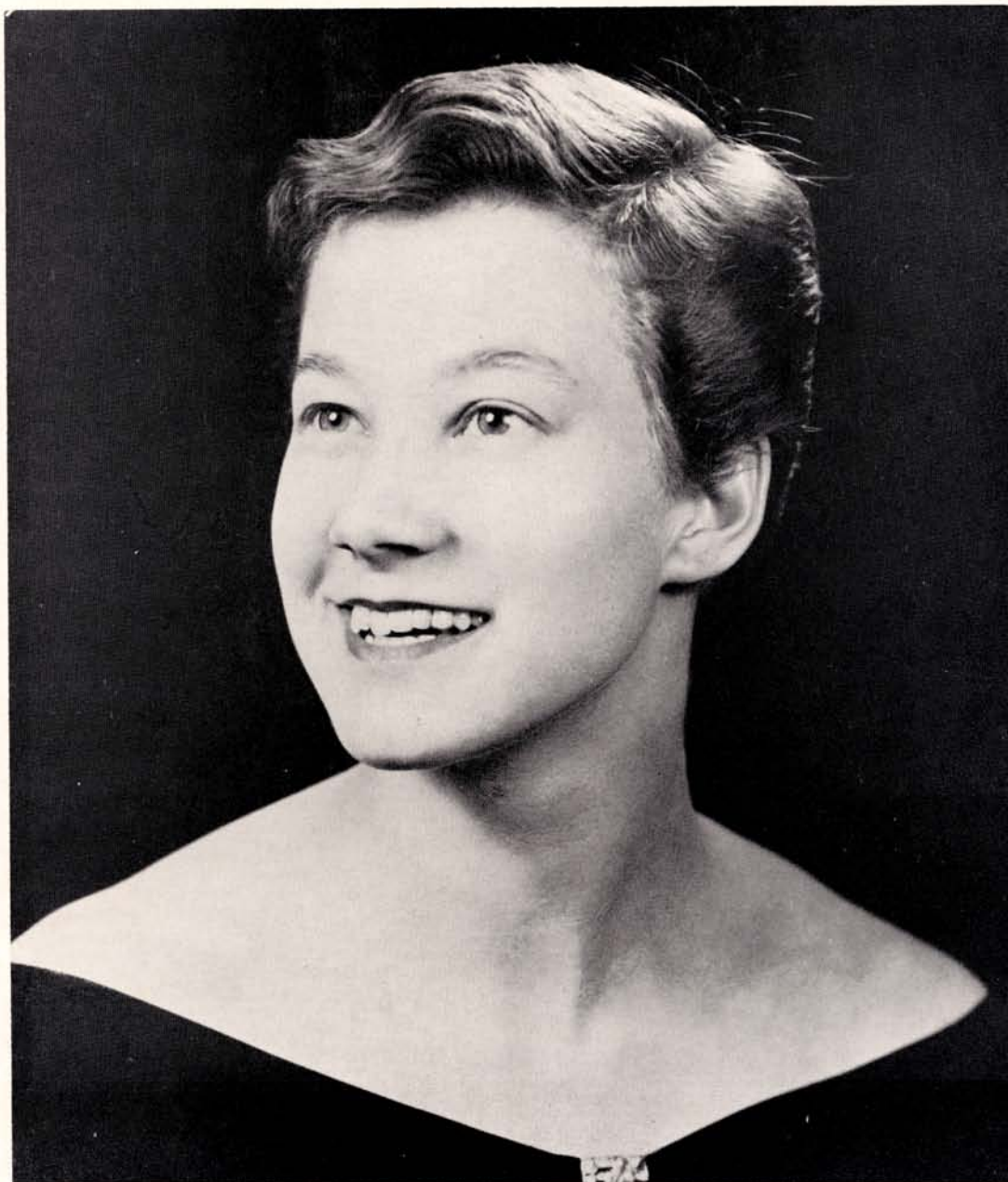
## *Holtman* Chosen Blue and Gold Queen

The Blue and Gold takes pride in presenting Miss Sally Holtman as Blue and Gold Queen of 1954-55. Sally, a two-year elementary education major, is from Lodgepole. She is an active member of Sigma Theta Phi Sorority.



## *Lexie Clark* is K-Club Queen

Lexie Clark, Gothenburg Junior, was chosen as K-Club Queen of 1955. Lexie is majoring in elementary education. She is a member of Sigma Theta Phi Sorority.





## *Christensen* is Homecoming Queen

Charm aptly describes the Homecoming Queen of 1954, Anne Christensen. Anne, a senior commerce major from Kearney, was elected by the student body. Among her activities are Delta Phi Beta Sorority and Inter-Fraternity-Sorority Council.



## *Hernbloom, Nordbrock* are Fraternity Sweethearts

Betty Hernbloom (right), Phi Tau Gamma Sweetheart, is an elementary education junior from Lodgepole. Betty represents Sigma Theta Phi Sorority.



Connie Nordbrock (left) was selected as Caledonian Sweetheart. A member of Sigma Theta Phi Sorority, Connie is a junior majoring in commerce.





## *Wilson, Mitchell*

Mildred Wilson was chosen by her sorority, Delta Pi Beta, to reign as Holly Queen at the annual Holly Ball. Mildred is a senior majoring in home economics.



Janet Mitchell reigned as sweetheart of Sigma Theta Phi at their Butterfly Ball. Janet is an art major from Orleans.

## *Lindholm* are Sorority Royalties

RoDonna Lindholm was presented as Zeta Cinderella at the annual Cinderella Ball. A senior from Polk, RoDonna is majoring in elementary education.







Duane Shackelford, editor, and Donna Brink, artist, discuss the division pages for the Blue and Gold. Roger Dahlin, business manager, (left) seems pleased with the balance shown in the books. Janet Mitchell, typist, (below, left) spent many hours typing for the Blue and Gold. Dayne Smith and Bill Boyd (below) were sports editors for the yearbook.



## Blue and Gold

To record many vivid scenes from this memorable school year has been our goal as we have worked on this yearbook. There were times of disappointment and encouragement as the book slowly worked into shape. Despite the many hours of work, there is always that certain feeling of satisfaction when a job is finished.

The editor and business manager chose

their staffs from those who were interested in the work. Donna Brink served faithfully as artist. Marilyn Whitney and Dale Black were class editors. Janet Mitchell was typist; Dayne Smith and Bill Boyd were sports editors. Jane Anderson, Charles Jenkins, and Shirley Shaffer helped with writing copy. Larry Johnson and Burdette Farm assisted in selling advertising.

The business manager and his assistants, **Larry Johnson** and **Bud Farm**, (below) are quite concerned with some of the bills they received. **Dale Black**, underclassmen editor, and **Marilyn Whitney**, senior editor, (right) found their work to be very enjoyable.







**BUSINESS MANAGER, Bob Rademacher** (top), gets the ads in shape for the next week's edition of the Antelope. (Bottom). Scanning last week's issue are **Bob Rademacher**, business manager, **Pat Roucis**, editor, and **Glen Underhill**, assistant editor.

## The Antelope

Newspaper work, as any member of this year's Antelope staff can tell you, is comprised of many headaches and much hard work. Yet, journalism is a field that offers many rewards. The thrill of seeing in print an article that one has written, the feeling of accomplishment, and the spirit of working together for a common goal is adequate compensation for all the toil involved.

The Antelope strives to reflect student opinion, and to encourage and maintain the reputation of a "friendly college." Attempting to interpret the policies of the student governing body and the administration, it gives opportunity for student evaluation of these policies.

Co-operation and co-ordination, so necessary for a successful newspaper, have been achieved this year by editor Pat Roucis and business manager Bob Rademacher, through the capable assistance of Miss Clara Johnson, chairman of the Publications Committee.

**EFFICIENCY EXPERTS** — Richard Pederson, Barbara Beghtol, Charlie Jenkins, Anne Underwood, Larry Johnson, Del Sutherland, Jack Nellson, Bill Kalous.



## "Voice of the Friendly College"

**ANTELOPE EDITOR**, Pat Roucis (right), checks the weekly assignment sheet that alerts reporters to cover stories. **ASSISTANT EDITOR**, Glen Underhill (below), checks the headline chart. Glen was presented the Antelope Key award for service to the publication.



**FRIDAY FOLDERS:** Elnora Rahmeyer, Dollie Stegman, Lois McAfee, Monica Paitz, Robert Gell, circulation manager; Roger Edson.







## College Band Provides Music and Spirit

The Kearney State Teachers College band, under the direction of Dr. Robert House, held a place of major importance in the musical activities of the college. The marching band, led by drum majorette Nancy Wise, functioned throughout the football season, providing music and performing during the halftime at football games.

The seventy-two piece band sported their new uniforms at the Fort Hays football game. Flashy West Point style, the uniforms are two shades of blue with gold trim. This organization added additional

color and spirit to every football game.

Beginning rehearsals immediately after marching band season was over, the concert band was kept busy preparing for their formal concerts. This found them on the stage showing commendable talent in overture as well as march. The highlight of the second semester was the annual tour in the latter part of April.

Officers of band are: Laird McCormick, business manager; Gary Thomas, student conductor; Marilyn Whitney, personnel manager; Vera Collison and Arlene Foster, Librarians.



## BAND ROSTER

### Flute

Amy Dusek  
Loietta Johnson  
Joyce Bishop  
Nelda Handel  
Karen Van Camp  
Janice Welker

### Oboe

Jane Anderson  
Denny Houston  
Anita Lorenzen

### Clarinet

Gary Thomas  
Vera Collison  
Barbara Viren  
Janice Keller  
Arlene Foster  
Berneice Ecklund  
Berneita Ecklund  
Paul Peister  
Illene Huffman  
Betty Lees  
Joanne Kivlighn  
Eldon Muehling  
Paul Stolz

### Alto Clarinet

Dagmar Naylor

### Bass Clarinet

Marilyn Whitney  
Bill Shiltz

### Bassoon

Margot Franke

### Alto Saxophone

Norris Augustin  
Nancy Wise  
Ron Messman  
Gary Hoeltke  
Maurice Nelson  
Joylyn Brown

### Tenor Saxophone

Ella Douglas  
Elnora Rahmeyer

### Baritone Saxophone

Bill Larson

### French Horn

Ron Nelson  
Ruth Barker  
Sharon Stear  
Doug Miller  
Doris Chasley  
Mose Belmudez

### Trumpet

Don Munson  
Joyce Springer  
Jim Mitchell  
Allen Farm  
Myrl Ostgren  
Gary Ackerman  
David Roberts  
Dean Holliday

### Trombone

Frank Robinson  
Larry Collison  
Joyce Mitchell  
Katherine Strasburg  
Lyman Novy  
Karen Caspers  
Larry Peterson  
Charline Rutt  
Nancy Hanes

### Baritone

Donald Hardin  
Stanley Urwiller  
Bill Lewis

### Tuba

Laird McCormick  
Dewaine Alcorn  
Charles Jenkins  
Ewald Ehly

### Percussion

Don Straney  
Shirley Acker  
Marcella Helser

### Tympani

Donna Sanders

### Piano and celeste

Linda Larson

**DRUM MAJOR AND MAJORETTES:** Jo Kivlighn, Sharon Simon, Nancy Wise, Dagmar Naylor, Marci Nicodemus.







## Acapella Choir Presents Vocal Music

At three o'clock in the afternoon the college halls echo with vocal exercises. This is the regular practice period of the vocal department. The KSTC choir, under the capable direction of Mr. Wm. Lynn, become familiar with the best in vocal music.

Singing of this type demands that the student have real musical ability as well as a desire to work hard. Harmony and teamwork are the essentials in such a large vocal

group. A spring concert was presented by the all-college choir. This group took part in the annual Christmas program, attended by many townspeople as well as students.

The Choristers elected officials to perform executive duties from within the group. They are: Gary Thomas, president; Vera Collison, vice-president; Carol Rathe, recording secretary; Jane Anderson, corresponding secretary.

## COLLEGE CHOIR

Abraham, Dick  
Aden, Shirley  
Alcorn, Dwaine  
Allen, Joe  
Altmaier, Connie  
Anderson, Jane  
Anderson, Carole  
Anderson, Muriel  
Armstrong, Gene  
Auble, Don  
Aspegren, Carolyn  
Augustin, Norris  
Ayres, Don  
Barker, Ruth  
Beckmann, Juliann  
Belmudez, Mose  
Bishop, Joyce  
Black, Dale  
Blackburn, Bud  
Blauch, Diane  
Bonnell, Shirley  
Boyd, Bill  
Brodine, Marilyn  
Bruening, Gene  
Campbell, Rod  
Carroll, Ardyce  
Christ, Joan  
Collison, Larry  
Collison, Vera  
Corkill, Nila  
Cornish, Eldon  
Cudaback, Elmer  
David, Carolyn  
Denman, Shirley  
Dodson, Max  
Dohrman, June  
Dunham, Joyce  
Eckhout, Mary Alice  
Ehly, Ewald  
Ely, Arlis  
Envick, Bob  
Everts, Warren  
Farm, Bud  
Fisher, Charlotte  
Foster, Arlene  
Franke, Margot  
Dantz, Paul  
Gilgen, Gordon  
Glenn, Sharon  
Graff, Jenny  
Graham, Sharon

Griess, Joanne  
Gross, Don  
Haberman, Joan  
Hanes, Nancy  
Hanlon, Mary  
Harris, Norma  
Hein, Don  
Hemmett, Larry  
Hergott, Eleanor  
Hernbloom, Betty  
Hicks, Jo  
Hill, Nancy  
Hoeltke, Gary  
Holtman, Sally  
Hooper, Marlene  
Houston, Denny  
Jardon, Don  
Jay, Pat  
Jensen, Harlan  
Johnson, Alice  
Joines, Lueen  
Jordan, Gerald  
King, Jack  
Kivilighn, Joanne  
Kniss, Carol  
Koci, George  
Kroeger, Barbara  
Kuhlmann, Arlene  
Labart, Donna  
Larsen, Linda  
Lempka, Kenneth  
Linch, Stan  
Lorenzen, Anita  
McAfee, Lois  
McConkey, Richard  
McCormick, Laird  
McElravy, Melvin  
McKibbon, Larry  
Main, Don  
Main, Kenneth  
Mattson, Clark  
Merryman, Bill  
Miller, Bob  
Mitchell, Jim  
Mitchell, Joyce  
Morris, Alan  
Mousel, Marie  
Mundt, Betty  
Naylor, Dagmar  
Nelson, Kay  
Nelson, Maurice

Nelson, Ronald  
Neujahr, Janice  
Nordbrock, Gerald  
Novasad, Amelia  
Ortgiesen, JoAnn  
Palmer, Janice  
Peak, Mary Ann  
Peister, Paul  
Peterson, Larry  
Pfester, Emily  
Pollat, Erin  
Purintun, Sharon  
Rathe, Carol  
Reynaga, Josie  
Rice, Janice  
Robertson, LaVerne  
Robinson, Pat  
Rumbeck, Cherie  
Sand, Royal  
Sanders, Donna  
Schmidt, Harry  
Shaffer, LaVonne  
Shiltz, William  
Sinnen, Dallas  
Smith, Marjorie

Softley, Beverly  
Spargo, Dick  
Spray, Mary  
Springer, Joyce  
Straney, Don  
Stransky, Jack  
Stransky, Marlene  
Surber, Larry  
Talbert, Mary  
Tetzlaff, Andy  
Thomas, Gary  
Tjaden, Bill  
Van Camp, Karen  
Viren, Barbara  
Von Ohlen, Betty  
Welty, Don  
Whitney, Marilyn  
Williams, Nadia  
Williams, Wayne  
Windels, Donna  
Winfrey, Janice  
Wise, Nancy  
Yant, Ginger  
Zabrzevske, Mary Ann

William Lynn  
Director





## Orchestra Presents High Caliber Music

The best in great music was presented by the Kearney Symphony Orchestra, under the able direction of LeRoy Bauer. The personnel of the orchestra consists of students from the Teachers College, students from the Kearney Public Schools, and townspeople from surrounding communities. The Kearney Symphony affords an opportunity for people to play serious music of the highest caliber; and in presenting this to the Kearney public, enhances the cultural aspects of the community and college alike.

This season's local artists featured with the symphony were Dr. Robert House, cello soloist, in an all French program. Maribeth Lynn and Douglas Engelhardt, violin and viola duo soloists, appeared on the December 5 program. In addition, this year, for the first time, the orchestra accompanied Mr. Sascha Gorodnitzki playing the Piano Concerto I by Franz Liszt.





LeRoy Bauer  
Conductor

## ORCHESTRA ROSTER

### Violins

Maribeth Lynn  
Hazel King  
Donald Mason  
Jenny St. John  
Howard Meyer  
Carolee Coppel  
Adelbert Bonner  
Kathleen Forbes  
Dwayne Dunning  
Guy Dunning  
Joyce Webster  
Linda Larsen  
Joan Webster  
Kathleen Freeman  
Kathryn Freema  
Judy Barnhart  
Anu Preems

### Violas

Douglas Engelhardt  
Art Larsen  
Diane Blauch  
Jay Jamison  
Elizabeth Robinson  
Matthew Shoemaker

### Cellos

Robert House  
Marjorie Young  
Bettelee Lewis  
Marlene Kimmons  
Marietta Mason

### Basses

Carol Rathe  
Tom Sibbitt  
Stephen Comi  
Bill Larsen  
Gillian Pearson

### Flutes

Amy Dusek  
Judy Keenan  
Karen Van Camp  
Loiette Johnson

### Piccolo

Judy Keenan

### Oboes

Jane Anderson  
Dale Ground

### English Horn

Jane Anderson

### Clarinets

Gary Thomas  
Vera Collison  
Arlene Foster

### Bass Clarinets

Marilyn Whitney

### Bassoon

Margot Franke  
Laurie Keenan

### Horns

Ron Nelson  
Ruth Barker  
Mercedes Michaels  
Douglas Miller

### Trumpets

Robert Buddenburg  
Donald Munson  
Allen Farm  
Myrl Ostgren

### Trombones

William Nelson  
Frank Robinson  
Larry Collison  
Laird McCormick

### Tuba

Dwayne Alcorn

### Tympani

Willys Newstrom

### Percussion

Gretchen Lecron  
Jack Swanson

### Keyboard

George Whitfield

### Harp

Lila Jeannine Sibbitt





**CHORALEERS**—TOP ROW: Larry Collison, Gary Thomas, Jack King, Dwaine Alcorn, Bill Boyd, LaVerne Robertson, Kenneth Main, Gerald Nordbrock, Jerry Jordon, Ewald Ehly, Don Gross, Don Straney, Alan Morris. **SECOND ROW:** Laird McCormick, Jim Mitchell, Norris Augustin, Dick Spargo, Ron Nelson, Denny Houston, Don Jardon, Dallas Sinnen, Rod Campbell, Gene Armstrong, Larry Hemmett, Larry Peterson, Andrew Tetzlaff, Don Auble. **THIRD ROW:** Diane Blauch, Jo Hicks, Betty Mundt, Joyce Springer, Sally Holtman, Betty Hernbloom, Jenny Graff, Charlotte Fisher, Amelia Novasad, Vera Collison, Nila Corkill, Dagmar Naylor, Leora Rippen, Margot Franke. **BOTTOM ROW:** Jane Anderson, Ardyce Carroll, Joan Haberman, Joyce Bishop, Arlene Foster, Linda Larson, Jo Griess, Carol Rathe, Marilyn Whitney, Carole Anderson, Joyce Mitchell, Nancy Hill, Pat Jay.

## Choraleers Are Select Singers

The Choraleers is a group of forty-five voices selected from the all-college choir. A favorite and enlightening Christmas program, "Amahl and the Night Visitors," by Gian-Carlo Menotti, was presented by the Choraleer group. Gary Thomas, Andrew Tetzlaff, Gene Bruening, Diane Blauch, all from the Choraleers, and Dick Peterson, from the Kearney Junior High School Chorus, made this presentation highly enjoyable.

A spring tour to many of the surrounding towns was an event every Choraleer member looked forward to. As many as three concerts were presented daily. Although the trip was hard on the overworked vocal cords, it was a big success and everyone had fun. Through the school year, the Choraleers have also appeared on television.



## On The Air

Jim Buterbaugh (above) is announcing another of the radio programs heard from 3:30 to 4 o'clock each weekday through the facilities of KGFW. Mr. Welsbacher (above, right) is giving his interpretation of "The Reading Hour" on a Tuesday afternoon program. Jim (below, right) is also student director of the radio programs. Sally Holtman (below) provides vocal music on "Campus Talent Time."







## Homecoming

"Stairway to the Stars," subtitled "Movietime U. S. A.," marked the theme for the annual homecoming activities on October 23. Beginning with Fraternal breakfasts in the morning, through the parade and the game with Doane in the afternoon, and on past the dinners and dance in the evening, the idea of fun and frolic reigned for one day.

With more than 1200 musicians in 24 bands, eleven floats, and a gala spirit, the parade began the never-to-be-forgotten afternoon in a fine style. The highlight of the afternoon was the crowning of the Home-

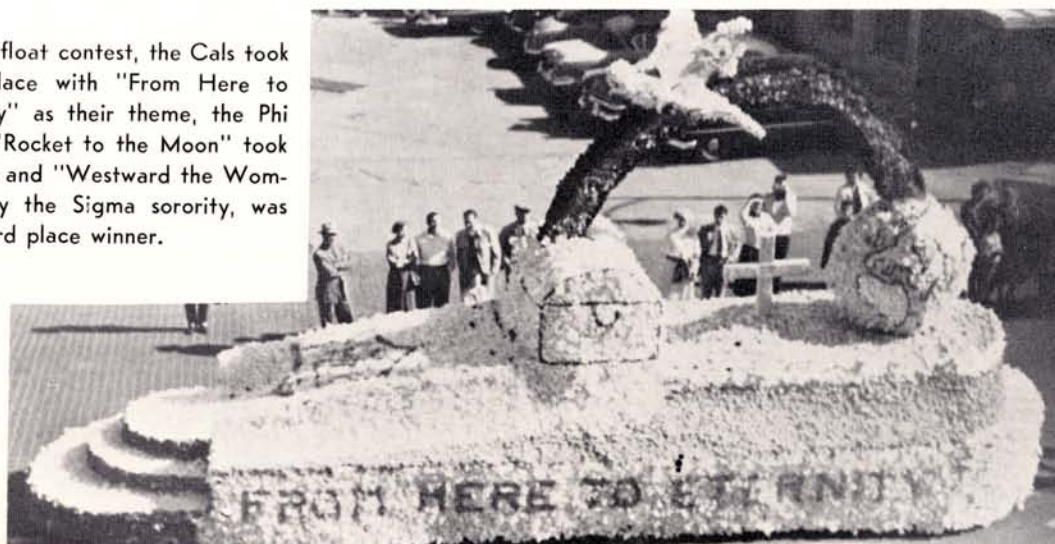
coming Queen. From ten candidates, the queen was chosen by the votes of the student body. At the half of the game, President Cushing crowned Miss Anne Christensen as the 1954 Homecoming Queen. Another important event of the afternoon was the victory that we scored over Doane with a score of 21-7.

The Homecoming activities came to a close with the Homecoming Dance in the gym to the music of Ellis Frazer. With intermission entertainment by the Campus Aires and Mr. and Mrs. Welsbacher, the dance brought to a close the 1954 Homecoming.





In the float contest, the Cals took first place with "From Here to Eternity" as their theme, the Phi Taus' "Rocket to the Moon" took second and "Westward the Women," by the Sigma sorority, was the third place winner.





## Mardi Gras



President Cushing crowned Gordon Moor and Helen Camaras as king and queen of the Mardi Gras.

In keeping with the past tradition of the school, the YM-YW Mardi Gras on February 11 contributed its part to the year's activities.

Case Hall's Leg-A-See was a big hit, especially with the male members of the crowd, along with the balloon bust set up by the Zetas. Sigmagrams were being delivered with unfailing accuracy all over the building, while the hats sold by the YW were going like hot-cakes. The fishpond run by Martin Hall, the dart board of the Sophomores, and the ring toss were among the other popular spots in the general area of the carnival.

The Deltas presented an old-fashioned melodrama which followed in their outstanding tradition. The Phi Taus ended the carnival with a musical extravaganza which was attended and enjoyed by all.

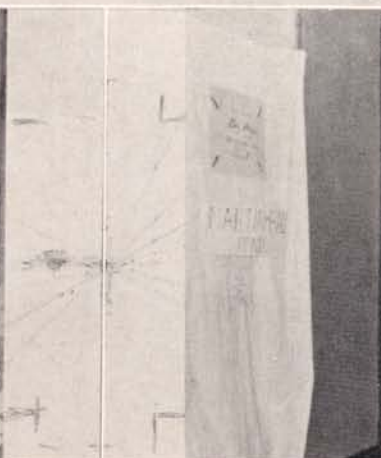
After the game with Wesleyan, the Mardi Gras dance held dominion over the campus. The high spot of the evening was the crowning of the Mardi Gras king and queen at the intermission of the dance. The students chose, from a group of candidates, Gordon Moor as their king and Helen Camaras as their queen.



Here's what happened  
at the Mardi Gras.



What a figure!



Break those balloons!







## Amahl And The Night Visitors

"Amahl and the Night Visitors" was once again presented as the Christmas opera at KSTC. Playing the part of Amahl, the 12-year-old boy, was Dick Peterson from Kearney Junior High School. His mother was portrayed by Diane Blauch.



The three Oriental kings (above), who followed the star in search of the Christ child, were played by Gene Bruening — who was King Kaspar; Andy Tetzlaff, King Melchior; and Gary Thomas as King Balthazar. The village dancers (right) were Dagmar Naylor and Ardyce Carroll.







## Lo and Behold

Making up the cast for Lo and Behold were Bill Roach, Ardyce Carroll, Bill Shiltz, Nancy Hanes, Dale Black, Jo Hicks, Gordon Gilgen, and Warren Everts.



(Top) There's more than one way to enter a house! (middle) "And will you please take your hat out of my face!" (right) Just the two of us . . . and a room full of ghosts!





## The Crucible

The cast for the highly dramatic production of *The Crucible*—Don Main, Fred Kempf, Dagmar Naylor, Anne Underwood, Gene Maxey, Barbara Smith, Doris Hunse, Carol Anderson, Dale Black, Thane Hascall, Monica Paitz, Ray Swift, Neva Zimmerman, Donna Labart, Lawanna Tucker, Bill Shiltz, Mary Hanlon, Bill Roach, Eldon Muehling, and Charles Jenkins.



(Top) Fear not, John, for I can save you . . .  
(middle) And it will be a grand transformation, marshall! (left) Take them to the gallows!



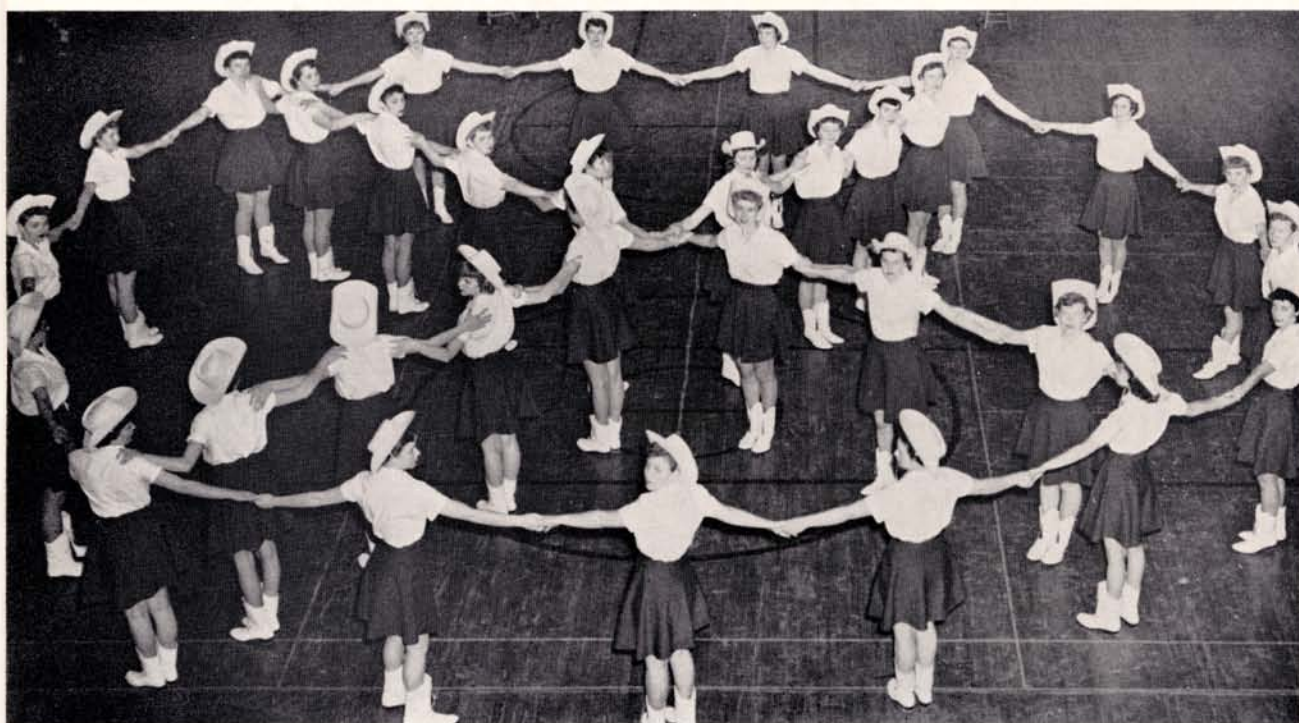


**CHAIR ROUTINE:** Rose Berggren, Barbara Viren, Mary, Spray, Coleen Thomas, Marci Nicodemus, Bonnie Donaho, Lawanna Tucher.

## Wagoneers

The Wagoneers is an organization providing an opportunity for students to participate in a special activity emphasizing precision drills. The Wagoneers foster school spirit and pep and furnish half-time entertainment for all school athletic functions. This year's concert group is composed of thirty-two girls with a teaching staff of five students and the director.

The Wagon Wheel







**TEACHING STAFF:** Dale Black, Don O'Neill, Norma Harris, Miss Orcutt, sponsor; Bill Boyd, Melvin McElravey.

**WAGONEERS**—TOP ROW: Barbara Viren, Eleanor Hergott, Neva Zimmerman, Lawanna Tucker, Rose Berggren, Coleen Thomas, Merna Ruebsman, Mary Spray, Jill Jenkins, Marie Mousel, Shirley Sitzman. SECOND ROW: Jean Larreau, Joan Thurman, Shirley Thurston, Jan Witters, Marlene Stransky, Elaine Osterhoudt, Nancy Hill, Norine Wurdeman, Berneice Ecklund, Joanne Kivlighn, Bonnie Donaho, Betty Lees. BOTTOM ROW: Jo Christ, Sharon Stear, Kathryn Kilgore, Marci Nicodemus, Donna Labart, Norma Harris, Janet Jost, Lucille Anderson, Arlis Ely, Carolyn Draucher.







**CASE HALL COUNCIL**—TOP ROW: Joanne Kivilghn, Shirley Aden, Jan Witters, Beverly Softley, Mrs. Mathews, director; Kathryn Kilgore. BOTTOM ROW: Jill Jenkins, Adell Hillmer, Nancy Wise, Shirley Margritz, Marci Nicodemus.

## Case Hall

This room is more than just a place to study and sleep.





Mrs. Mathews is "mother" for the girls in Case Hall.

## Dormitory for Freshmen Women

Some of the girls take a few minutes each day to read the newspapers and magazines. Singing is a favorite pastime for many Case Hall residents.







Mrs. Steinmeyer is house mother of Martin Hall.

## Martin Hall



Singing and reading are both part of the day's activities.





... and everybody is happy

## Dormitory for Upper-Class Women

**MARTIN HALL COUNCIL:** Clara Schwartz, Nadine Watson, Joan Thurman, Helen Camaras, Ellen Foth, Patsy Johnson, Doris Hunse, Joyce Springer, Viola Krzycki.







Housemother of Men's Hall is Mrs. Kirk.

## Men's Hall

**MEN'S HALL COUNCIL:** Dale Black, Tom Chaney, Clayton Scott, Milton Johnson, Larry Ferguson, Jerry Bebernes, Dayne Smith, Mrs. Kirk.





Comic books are educational, too.

## Dormitory for Men



Some students read the newspapers, others are more interested in a good card game.







Mr. and Mrs. Thorp are directors of Green Terrace Hall

## Green Terrace Hall

COUNSELORS: Eldon Cornish, John Rowland, Don Nekuda, Bob Ewoldt.





John and Dwayne (above) study, while Alvue and Lynn (right) read the daily newspaper.



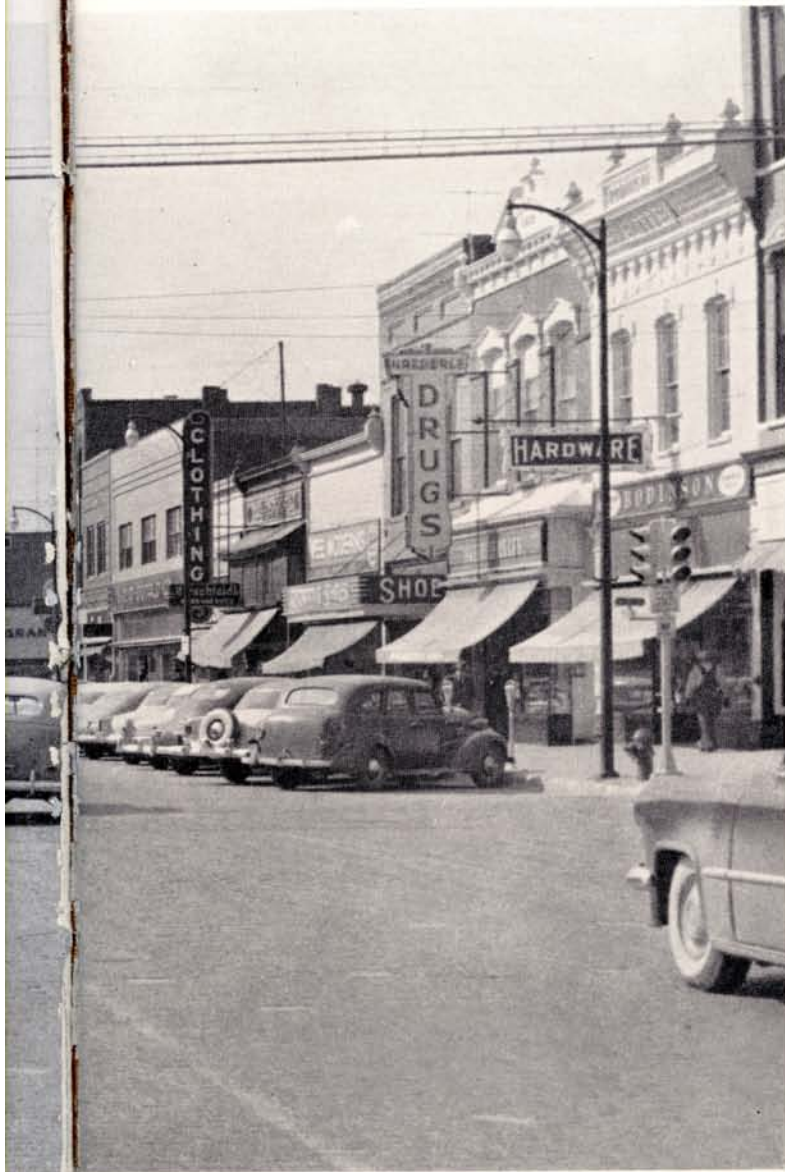
## Dormitory for men

Some residents of Green Terrace Hall like to play cards.









# Advertising



## OUR STUDENT UNION



Mrs. Webster, director of our student union appreciates all comments and suggestions for improving the entertainment and recreation facilities.



## COLLEGE CAFETERIA



A well balanced menu offers you a fine choice of foods at the college cafeteria. Low prices are emphasized

The college cafeteria, located in Men's Hall, was built and maintained for the college students. Fraternity, Sorority and club dinners and dances are held in the cafeteria dining rooms







## GREGERSON'S JEWELRY

Across from the World theatre  
 diamonds watches silverware clocks  
 gifts jewelry pens and pencils  
 watch bands famous brands  
 guaranteed repairs



## Fort Kearney Hotel and Coffee Shop

John A. Henry, Manager

Private dining rooms available for all occasions. Weddings, breakfasts, luncheons, dinners and receptions. None too large or too small.

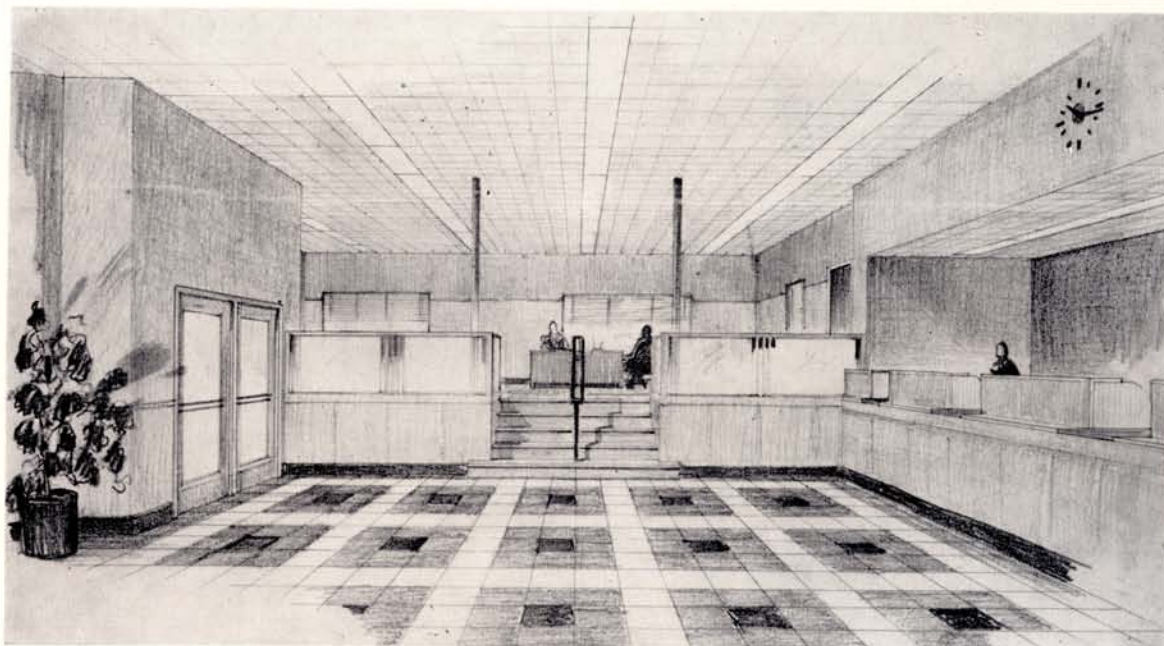


## Bahr-Schall Music Company

For the finest in music get it at Kearney's most complete music store. Pianos, phonographs, sheet music, radios, recordings and musical instruments.

## Kearney Floral and Nursery

Flowers for all occasions  
2006-2nd Ave. Ph. 2196  
Kearney, Nebraska



## Platte Valley State Bank

"We enjoyed serving you"  
Kearney, Nebraska



Kearney, Nebraska

## Your "Music 'till Midnight" Station

Serving central Nebraska for a quarter of a century.





## J. C. PENNEY COMPANY

Penney's quality is your  
greatest saving

*Continuous Quality  
Is Quality You Trust*



BOTTLED UNDER AUTHORITY OF THE COCA-COLA COMPANY BY



## IDT'S CLOTHING FOR MEN

Kearney, Nebraska

22nd and Central

Its IDT'S for "it in men's wear"

## CLASUSSEN'S

"Come and see—what's new in a Claussen shoe". For up-to-date styles in fine foot wear, its Claussens.

Kearney, Nebraska



## First National Bank

Complete banking service

Member Federal Reserve system—Member Federal Deposit Corporation

We are always glad to serve you.

## Sports-Craft Supply Store

Where they sell  
"the best in everything for sports"







## Baumgartner's Variety Store

Hoisery Lingerie Millinary

Stationery School Supplies

Kearney, Nebraska



## Mattson's Studio

Commercial portraits  
Cameras and camera supplies



## Neilsen Chevrolet

"Service after the sale"

Kearney, Nebraska

## Davidson's Jewelry

"The Jewel Box of Treasured Gifts"

Kearney, Nebraska



## Jordan's Standard Service

Batteries

Tires

Accessories

Gas — Oil

824 West 24th

We give *Z.N.* Green Stamps



## Kearney Creamery

Home of Blue Bell  
Dairy Products

Phone 29031

223 Second Avenue      Kearney, Nebraska







## Denny's Grille

Small enough to know you,

Large enough to serve you.



## Central Typewriter Company

G. G. (Jerry) Treadway, Manager

Complete Office Supply Store

Rentals — Sales — Service

2012 Central Ave. Phone 22531

Kearney, Nebraska



## Hawthorne's Jewelry

"Where generations have always been pleased"

Kearney, Nebraska



More Quality, More Fashion  
for your money  
compare

## J. M. McDONALDS

Kearney, Nebraska

# Kaufmann and Werkert

SID HELLMAN  
AND JAKE HELLMAN, OWNERS



Kearney's Home owned Store

## Sears Roebuck and Company

Kearney's Most Complete Department  
Store



If you don't believe education pays  
Look at me

## Nim's Station



## Nelson's Furniture

Most for your Furniture Dollar







## **Famous Shoe Store**

The place to go for shoes you know  
 2111 Central Ave.      Kearney, Nebraska  
 Men's Roblee Justin Sherbrooks  
 Women's Air-Step Paris Fashion Girl Scout  
 Loafer Socks

---



## **Kearney Plumbing and Heating Company**

Bert Wallace  
 Richard W. Wallace  
 Kearney, Nebraska

---



## **Consumers Public Power District**

Controlled and operated for  
 Nebraskans by Nebraskans

---



## **Hub Printing Company**

The Hub Printing Company is the place to  
 go for all types of Commercial printing.

## Grantham Cafe

Where Friends meet to eat  
We cater to private parties in our newly  
decorated party rooms.

---



## WEBSTER'S

Cor. 24th-Ave. A  
Batteries — Cables  
Recharging — Repairing  
Tires and Tubes  
Wheel Balancing  
Phone 23511                      Kearney, Nebraska

---



## The Kearney Dental Association

Helps Support your College

W. PAGE BOGGS, D.D.S.  
G. M. HAMILTON, D.D.S.  
J. A. CULLEN, D.D.S.  
RAYMOND HEUKE, D.D.S.  
DENZLER & DENZLER, D.D.S.

K. L. HOLMES, D.D.S.  
R. M. GILMORE, D.D.S.  
FRANK O. RAASCH, D.D.S.  
BEN H. PAHL, D.D.S.

---

## Eck's Paint & Glass Store

2215 Central Ave.  
Kearney, Nebraska



## **Liberty Dry Cleaners**

Kearney, Nebraska

Approved Sanitone Service

The BETTER Kind of Dry Cleaning

---

## **Hirshfelds**

Kearney, Nebraska

**The Place to Shop  
For men & boy's clothing**

---

## **Snack Bar**

Lunches — Fountain

For snacks in pleasant surroundings

Emery F. Jurgens, Prop

2209 Central Ave.      Kearney, Nebraska

---

## **Davis Paint & Wallpaper**

Kearney's only complete decorating service

Charlie Wakefield

Phone 2-3791

## **Bodinson Hardware**

Everything in Hardware needs

Kearney, Nebraska

---

## **Bowen-Meuser Motor Co.**

DeSoto-Plymouth Sales & Service

2024—1st Avenue

Kearney, Nebraska

---

## **Joy-Lynn**

Kearney, Nebraska

Corsages for all occasions  
at the Joy-Lynn Floral Shop

---

## **Schnert Bakery**

Quality bakery products

2117 Central Ave.

Kearney, Nebraska

## **McKee Jewelry**

Kearney, Nebraska

Serving the KSTC trade since 1923

Expert Jewelry and watch repairing

## **Kearney Laundry & Zoric Cleaners**

Dial 24051

W. K. Downing



Always buy

## **Fairmont Ice Cream**

The peak of quality

Kearney, Nebraska



Lincoln-Mercury Sales and Service

Home of

**SAFE BUY**

Used Cars

25 St. & Ave. L. Phone 2123 Kearney

---

**BOYD JONES  
LINCOLN-MERCURY INC.**

---

---

**PONTIAC-CADILLAC SALES & SERVICE**

"Dollar for dollar you can't

beat a **Pontiac**"

**CADILLAC**—"Standard of the World"

**CHIEF PONTIAC-  
CADILLAC CO.**

801 East 25 St. Phone 2-7791 Kearney

---

---

**BUICK AUTHORIZED SALES & SERVICE**

When better Automobiles

are built

**Buick** will build them.

**KEARNEY BUICK CO.**

2516 Central Ave. Phone 2181 Kearney

Page 176

**FORD AUTHORIZED SALES & SERVICE**

Test Drive America's

Favorite Car

**THE 1955 FORD**

**MUELLER MOTORS INC.**

2020 1st Ave. Phone 2171 Kearney

---

---

**NASH SALES AND SERVICE**

The World's Most Modern Cars!

In 3 great series

**PETERSON MOTOR CO.**

15 East 23 St. Phone 22884 Kearney

---

---

**STUDEBAKER-PACKARD**

**KAISER-WILLYS SALES & SERVICE**

"Exceptional cars in all price fields"

**SAMWAY MOTORS**

2210 1st Ave. Phone 31001 Kearney

# INDEX

## A

Abbott, George William, David City	101, 104
Abraham, Richard, Mitchell	52, 137
<b>A Cappella Choir</b>	<b>136</b>
Acher, Shirley, Central City	52, 80, 135
Ackerman, Garry, Gothenburg	52, 88, 135
Adams, Louise	16
Adams, Ray, Blythe, California	35, 101, 107, 111, 95, 114
Adcock, Carolyn, Kearney	52
Aden, Shirley, Gothenburg	52, 83, 137
Ahrens, Bill, Minden	72
Ahrendts, Harold	16
Alberding, Arthur, Clay Center	35, 71, 86
Alcorn, Dwaine, Kearney	35, 79, 86, 135, 137, 139, 140
Alexander, Mary, Kearney	35, 71, 90
Allen, Joe, Madrid	137
Allan, Shirley, Wood River	52
Allmand, Barbara, Holdrege	41, 71
Altmaier, Connie, Kearney	52, 80, 91, 96, 137
Altmaier, Marianne, Kearney	41, 71, 72, 81, 91
Amend, Henry, Lincoln	114
Ames, Keith, Kearney	52
Anders, Harold, Lexington	95, 114
Anderson, Barbara, Hastings	41, 84
Anderson, Carole, Hastings	41, 68, 75, 82, 137, 140
Anderson, Jane, Kearney	41, 68, 82, 135, 137, 139, 140
Anderson, John, Kearney	52
Andersen, Merrell, Maywood	41
Anderson, Lucille, Chappell	41, 92
Anderson, Muriel, Sumner	52, 95, 137
Anderson, Gary, Axtell	41, 86, 94, 114
Anderson, Theodore, Arnold	52, 72
<b>Antelope</b>	<b>132</b>
Armstrong, Eugene, Broken Bow	52, 95, 101, 111, 114, 119, 137, 140
Armstrong, Sandra, Grand Island	52
Asher, Dewey, Kearney	41
Aspegren, Carolyn, Sutton	52, 137
Aspegren, Colleen, Clay Center	52, 77, 85
Aten, Carmen, Holdrege	52
Auble, Arvilla, Ord	52
Auble, Don, Ord	52, 137, 140
Auble, Marion, Arnold	25, 68, 79, 84, 96
Augustin, Norris, Blue Hill	41, 75, 89, 135, 137, 140
Aulik, Inge, Holdrege	41
Ayres, Don, Gothenburg	35, 89, 95, 114, 116, 137

## B

Baack, Donald, Gothenburg	51, 94
Babb, Lyla, Broadwater	35
Bacon, Kenneth, Kearney	41
Bahnsen, Catherine, Kearney	25
Bailey, Olivene, Ansley	35, 74
Bailor, Richard, North Platte	52, 101, 87
Baker, Kenneth, Franklin	95, 114, 115
Banks, Vicki, Grand Island	52
Barker, Ruth Ann, Lexington	41, 68, 76, 84, 135, 137, 139
Bashford, Marvin, Naponee	52
Bauer, LeRoy	16
Beavers, Bill, Kearney	52, 88, 107, 110, 114, 118
Bebernes, Jerrold, Cotesfield	41, 71, 89
Beck, James, Oconto	41
Becker, Bertha, Elm Creek	52
Beckman, Elmer	16, 71
Beckman, Juliann, Smith Center, Kansas	52, 94, 137
Beghtol, Barbara, Kearney	35, 132
Beilke, John, Scotia	52, 114
Beishline, Harold	62, 114
Belmudez, Mose, Kearney	52, 135, 137
Bennett, Harold, Litchfield	35, 95, 107, 111, 114
Bennett, Merle, Loup City	52
Benson, Richard, Sidney	101, 106
Berggren, Rose, St. Paul	52, 80

Bergquist, Alta	16
Berkheimer, Robert, Miller	52
Bertrand, Adrienne, Upland	52, 76
Bickford, Ronald, Kearney	89
Bigge, Larry, Grand Island	52
Bills, Edwin, Lodgepole	35
Birginal, William, Sargent	52
Bishop, Joyce, Kearney	52, 75, 83, 135, 137, 140
Black, Dale, Central City	52, 137
Blackburn, Charles, Ragan	52, 137
Blauch, Diane, York	25, 137, 139, 140
Bliese, John	16, 72
<b>Blue and Gold</b>	<b>130</b>
Boehmer, Marvin, Lodgepole	53
Boggs, Donna, Hershey	41, 84
Boggs, Wesley, Oshkosh	101, 102
Bomberger, Phyllis, Central City	53, 75, 77
Bonnell, Shirley, Broken Bow	53, 72, 80, 137
Bottrell, Robert, Beaver City	41
Bowers, Bill, Paxton	35, 88, 95, 101, 102
Bowman, Gilbert, Bradshaw	53
Boyd, Bill, Kearney	53, 137, 140
Bradly, Jacqueline, Kearney	62
Brady, Jerry, Shelton	114
Brandt, Jo Ann, Kearney	25, 75, 77
Braun, Louise, Cushing	53
Brecks, Ethel, Lexington	53
Brink, David, Kearney	35, 89, 95, 100, 101, 114, 115
Brink, Donna, Kearney	35, 72, 82
Brisco, Junior, Lexington	35, 114
Bristol, Stella, Ansley	53, 83
Brodine, Marilyn, Elm Creek	53, 92, 137
Broman, Mary, Elm Creek	53
Brown, Donna, Fullerton	42, 76, 90
Brown, J. C., Hershey	62
Brown, Joylyn Kay, Culbertson	53, 85, 135
Brown, Keith, Red Cloud	53, 91
Brown, William, Loup City	35, 71
Bruening, Gene, Ong	42, 137
Bruner, W. E.	16
Bubak, Dale, Cozad	42, 87, 95, 101, 103
Buckbee, Dyle, Comstock	42, 114
Buller, Jim, Hampton	42
Burger, Norma, DeWitt	42, 82, 94
Burgess, Gretchen, Julian	25, 75, 77
Borrows, Jo Ann, North Loup	77
Burton, Diane, Cambridge	42
Burwell, Terry, Kearney	53, 83
Buterbaugh, Jim, Gothenburg	42, 89

## C

<b>Caledonian</b>	<b>86</b>
Calvin, Glenda, Ravenna	42, 76, 85
Camaras, Helen, Grand Island	25, 81
Campbell, Rod, Giltner	25, 89, 95, 137, 140
Cargill, Blanche, Scotia	42, 76, 83, 95
Carlson, Arla, Sumner	53, 95
Carlson, Dwaine, Anselmo	53
Carlson, Eugene, Grand Island	72
Carlson, Kenneth	16
Carr, Phyllis, Ogallala	53, 76, 85
Carrico, Beverly, Kearney	53
Carroll, Ardyce, Broken Bow	81, 137, 140
Caspers, Karen, Hildreth	53, 76, 83, 135
Chambers, Allyn, Gothenburg	62
Chandler, Tom, Republican City	25, 74, 86, 95
Chaney, Barbara, Giltner	42
Chaney, Thomas, Giltner	26, 71
Chasley, Doris, Central City	53, 77, 135
<b>Choraleers</b>	<b>140</b>
Christ, Joan, Paxton	53, 83, 91, 137
Christensen, Anne, Kearney	26, 76, 126
Christensen, Beverly, Litchfield	53, 85



Christensen, Sylvia, Holdrege	42, 71, 72, 79, 81
Clark, Lexie, Gothenburg	36, 82, 125
Clement, Leona, Cotesfield	42, 76
Cline, Collene, Riverton	36, 68, 69, 72, 92
Coble, Harold, Broken Bow	53
Colhecon	76
College Band	134
Collison, Larry, Campbell	42, 75, 89, 135, 137, 139, 140
Collison, Vera, Campbell	26, 68, 69, 75, 82, 96, 135, 137, 139, 140
Conrad, Jennie	16
Corkill, Nila, Imperial	42, 82, 137, 140
Cornish, Eldon, Oconto	53, 114, 137
Copeland, Leland	17, 100, 114
Cornish, Filbert, Oconto	36
Cox, Richard, Broken Bow	42
Croissant, Robin, Riverdale	
Cronin, John, Minden	26
Crowley, James, Kearney	53, 88, 91, 114
Crum, Jeanette, Hastings	42
Cudaback, Elmer, Riverdale	53, 137
Cushing, Herbert	12, 13

## D

Dady, Gale, Kearney	42
Dady, Lloyd, Ansley	62
Dahlin, Roger, Ord	26, 66, 78, 86, 130, 131
Daily, James, Milburn	36
Daily, Joan, Mema	36
Dily, Monte, Milburn	53, 114
Danielson, Don, Aurora	62
Danker, Del	17
Dantz, Paul, Loup City	53, 137
Darling, Donald, Kearney	36
David, Carolyn, Atlanta	53, 137
Day, Susan, Miller	42, 90, 92, 95, 96
DeLano, Calvin, Kearney	26, 71
Delta Omicron	68
Delta Pi Beta	80
Denman, Shirley, Hastings	53, 83, 137
Denney, Roger, Eustis	53, 114
DeRolf, John, North Platte	36, 74
Devine, Mary, Oconto	53, 91
Dick, Robert, Kenesaw	36, 68, 69, 73, 74, 90, 94
Dicken, Irvin, Big Springs	43
Dickerson, Barbara, Sumner	36, 74, 82
Diffenderfer, N. R.	17
Dodson, Max, Venango	36, 69, 90, 137
Dohrman, June, Kearney	43, 82, 137
Doll, James, Lincoln	26
Donaho, Bonnie, York	53, 83
Douglas, Ella, Aurora	36, 68, 69, 90, 92, 135
Douglas, Pat, Ellsworth	53
Dowhower, Donald, Kearney	26, 78, 91
Downey, Barbara, Grand Island	27
Dowse, Kelvin, Comstock	53
Drake, Leslie, Mascot	43
Draucher, Carolyn, Benedict	53, 75, 77
Duncan, Virginia, Wood River	36, 68, 84
Dunham, Joyce, Grand Island	53, 137
Dusek, Amy, Ravenna	43, 76, 82, 135, 139
Dyer, Donald, Kearney	27, 101, 102, 95
Dyer, Pearl, Kearney	36, 90

## E

Eacker, Marilyn, Broken Bow	54
Eckhout, Bernadine, Amherst	54, 80
Eckhout, Mary, Amherst	84, 137
Ecklund, Bernice, Elwood	54, 75, 83, 135
Ecklund, Berneita, Elwood	54, 72, 75, 83, 135
Edson, Roger, Farnam	43, 133
Ehlers, Donald, Grand Island	54
Ehly, Ewald, Sutton	54, 88, 135, 137, 140
Ely, Arlis, Grafton	54, 137
Embree, Arthur, Merna	27, 86
Engleman, Harold, Kearney	36
Envick, Robert, Kearney	54, 137

Ernst, John, Columbus	43, 114
Escriff, David, Oakdale	27, 78
Evans, Diane, Big Springs	43, 80
Everts, Warren, Sutton	54, 137
Ewoldt, Robert, Stapleton	54

## F

Failor, Leona	17, 73
Farm, Burdette, Kearney	54, 83, 137
Farm, Allan, Wilcox	54, 88, 135, 139
Farrar, Roger, Maywood	54, 88
Felker, Lewis, Eddyville	54, 97
Ferguson, Larry, Taylor	36, 72, 89
Ferguson, Vernon, Ansley	62, 114, 117
Ferris, Verneta, Osceola	37, 81
Fischer, Florence, Burwell	43
Fisher, Charlotte, Amherst	37, 69, 81, 137, 140
Fleecs, Dorothy, Sutherland	43
Fleming, John, Lexington	54
Forbes, Shirley, Huntley	54
Foster, Arlene, Kearney	43, 75, 82, 135, 137, 139, 140
Foster, Charlie	17, 114
Foster, Robert, Kearney	27, 95
Foth, Ellen, Ord	27, 73, 82
Fox, Donald	17, 71
Fox, Marlene, Gandy	43, 76, 84
Franko, Margot, Pleasanton	54, 75, 83, 96, 135, 137, 139, 140
Franklin, Marvin	17, 100, 101
Fyfe, Doyle, David City	95, 101, 103, 107, 108, 109, 114

## G

Gallemore, Doris	17
Garrett, Delia	17
Garretson, Stanley, Smith Center, Kansas	54, 95, 101, 105, 114
Gaston, Mervie, Minden	54
Gaston, Russell, Minden	43
Gehre, Leonard, Gibbon	54
Gell, Robert, Nelson	43, 90, 133
Genereux, Evelyn, Campbell	43
Genereux, Irma, Campbell	54, 91
Gentry, Boyd, Exeter	43
George, Cletys, Broken Bow	43
Gilgen, Gordon, Kearney	54, 114, 137
Glade, Dixie, Grand Island	54, 83
Glenn, Sharon, Hildreth	44, 72, 137
Glover, Rex, Broken Bow	37, 71, 95
Goa, William, Denver, Colorado	54, 87, 101, 102
Golus, Ronald, Loup City	54, 107, 111
Goodchuck, Gary, Kearney	54
Goudy, Maxine, Kenesaw	44, 77, 82, 96
Graff, Genevieve, York	54, 83, 137, 140
Graham, Sharon, Miller	44, 137
Grandstaff, Stanley, Maxwell	37
Greer, Wardell, Sioux City, Iowa	54, 114
Griess, Joanne, Sutton	54, 83, 137, 140
Gross, Donald, Broken Bow	44, 137, 140
Gross, Frances, Red Cloud	81
Gudgel, Shirley, Ravenna	44, 84
Gunderson, Carol, Dix	27
Guzinski, Jerome, Grand Island	44

## H

Haberman, Joan, Sutton	54, 137, 140
Hackett, Jay, Kearney	54, 88
Hagadone, Don, Cozad	54
Hahn, Dwight, Hampton	44, 72, 89, 94, 114
Haile, Jack, Grand Island	62
Haines, Elsie, Naponee	44
Hale, Vivian, Grand Island	54
Haldiman, John, Columbus	114
Hamar, Dwayne, Lexington	54, 72
Hamilton, Maren, Kearney	54, 83
Hammond, Charles, Potter	54, 87, 114
Hammond, Earl, Litchfield	61, 72, 91



Hanes, Nancy, Shelton	55, 135, 137
Haney, Charles, North Platte	114
Handel, Nelda, Wauneta	55, 135
Hanley, Gwendolyn, Hayes Center	37, 92
Hanlon, Mary, Mitchell	55, 91, 137
Hansen, James, Kearney	55, 107, 108, 114, 116
Hansen, Martha, Sargent	44, 76
Hansen, Mildred	17, 68, 72
Hanshaw, Lois, Litchfield	27, 74
Hardin, Donald, Arnold	55, 135
Hardwick, William, Benkleman	55
Harmoney, LaVonn, Amherst	44
Harms, Mervyn, Hildreth	28
Harris, George, Grand Island	55
Harris, Norma, Kearney	37, 81, 137
Harrison, Birdie, Kearney	44
Harrold, Leona, Anselmo	55
Hart, Lyle, Riverdale	62
Hartman, Shirley, Paxton	44, 82
Hascall, Dean, Kearney	28
Hascall, Thane, Kearney	86
Haskin, Jerry, Kearney	44
Haufl, William, Glenville	37
Hawley, Glen, Arcadia	44, 101, 104
Haxby, Beverly	13
Hehnke, Robert, Grand Island	55
Hein, Donald, Kearney	55, 88, 137
Helmuth, Nancy, Kearney	62, 72
Helser, Marcella, Shelton	55, 135
Hemje, Don, Hildreth	44, 89, 94
Hemmett, Lawrence, Kearney	44, 89, 95, 137, 140
Henderson, Ivan, Gothenburg	44, 86
Hensel, Mildred, Kearney	44
Hergott, Eleanor, Orleans	55, 91, 137
Hernbloom, Betty, Lodgepole	37, 73, 82, 127, 137, 140
Hervert, Norma, Ravenna	55, 91
Hervert, Richard, North Platte	55
Herzog, Edward, Kearney	55
Hewitt, Marjorie, Kearney	28
Hicks, Jo, McCook	28, 137, 140
Hill, Nancy, Talmage	55, 80, 137, 140
Hillmer, Adell, York	55, 75, 77, 85
Hinkle, Marilyn, Kearney	37
Hircock, Billy, Merna	55, 114
Hirst, Donna, Cheyenne, Wyoming	55, 75, 77
Hirst, Wilma	18
Hoatson, Margaret, Hershey	45
Hoegh, Isabelle, Hampton	28, 76, 90, 95
Hoeltke, Gary, Grand Island	55, 135, 137
Hokom, Marvin, Lodgepole	55, 87
Holcomb, Laurel	18
Holliday, Dean, Amherst	56, 135
Holm, Lee, Maxwell	45, 86
Holm, Myron	18
Holmgren, Philip	18, 68
Holtman, Sally, Lodgepole	45, 76, 82, 92, 124, 137, 140
Holzfast, Geraldine, Paxton	55, 83, 91
Hooper, Marlene, Grand Island	45, 94, 137
Hopwood, Rolland, Fullerton	55, 114
Hornback, Gerald, Charleston	55
House, Robert	18, 139
Houston, Dennis, Kearney	37, 135, 137, 140
Dowitt, Doyle, Chappell	45, 70, 78
Huber, Dawson, Kearney	55
Hueftle, George, Kearney	37, 72, 87
Huff, Duane, Callaway	28
Hulshizer, Doris, Arnold	55, 76, 85
Humiston, Ronald, Shelton	55
Hunse, Doris, Arnold	28, 68, 69, 70, 73, 82
Hunse, Valetta, Arnold	37, 76
Huffman, Illene, Ansley	55, 83, 135
Hust, Mary Lou, Sutton	55
Hyde, David, Brewster	55
Hyde, Dale, Grand Island	55, 88

# I

Ihm, Bill, Hastings	55, 72
Ingram, Diane, Cotesfield	45, 85
Independent Students Association	90

Inter-Fraternity-Sorority Council	79
Inter-Varsity Christian Fellowship	95
Istas, Helen	18

# J

Jack, Joe, Loup City	55, 87, 95, 101, 105, 114
Jacob, Carolyn, Willow Island	45
Jacobs, Cliff, Minden	114
Jacobson, Sharron, Riverdale	28, 84
Jardon, Don, Alma	37, 86, 137, 140
Jamison, Jay, Kearney	89, 139
Jamison, Roselyn, Kearney	55
Jay, Patricia, Ainsworth	45, 137, 140
Jelden, Dean, Hildreth	55, 88, 94, 114
Jenkins, Charles, St. Michael	56, 83, 90, 94, 132, 135
Jenkins, Jill, Grand Island	56, 91, 96
Jensen, Erna, Cozad	37, 68, 71, 91, 92
Jensen, Harlan, Grand Island	56, 137
Jester, Don	18, 69
John, William, Loup City	45
Johnson, Alice, Sweetwater	45, 76, 82, 137
Johnson, Bob, Torrington, Wyoming	56
Johnson, Bruce, Holdrege	45
Johnson, Clara	18
Johnson, Gayle A., Agar, Kansas	56, 114
Johnson, Gayle C., Ong	45, 95, 107, 109, 111, 114, 115
Johnson, Kenneth, Eddyville	37, 86
Johnson, Larry, Hershey	45, 95, 89, 107, 114, 132
Johnson, Leon, Upland	45, 88, 94
Johnson, Loiette, Beaver City	56, 85, 135, 139
Johnson, Marilyn, Elsie	56, 85
Johnson, Marjorie, Campbell	56
Johnson, Milton, Oshkosh	29, 94, 95, 114, 115
Johnson, Patsy, Gothenburg	29, 58, 73, 79, 82
Johnson, Sheila, York	56, 76, 85
Johnson, Shirley, Kearney	38, 69, 76, 82
Joines, Lueen, Oconto	56, 137
Jones, Jerry, Axtell	45, 72
Jones, R. L., Sumner	62
Jordan, Gerald, Kearney	45, 89, 137, 140
Joyce, Marilyn, Gilmer	45, 91
Jungmeyer, Joan, Alma	56, 94

# K

Kalous, Bill, Kearney	29, 68, 69, 72, 86, 95, 132
Kappa Delta Pi	73
Kappa Pi	72
Kapperman, Lavila, Chester	56, 76
Karre, Fred, Scotia	56
Karsting, Glen, Blue Hill	56
Kavadas, Sam, Kearney	29
Kaylor, Keith, Alam	56
K Club	95
Kegley, Ronald, Kearney	56
Keller, Janice, Eustis	56, 94, 135
Kempf, Fred, Kearney	45, 70, 89, 114, 118
Kennedy, Susie, Cozad	46
Kenney, Perry, Amherst	46
Kniss, Carol, Gothenburg	56, 72, 83, 137
Knutson, Wendell, Shelton	56
Kilgore, Kathryn, David City	56, 83
Kimbrough, Richard, Kearney	29, 70
King, John, Kearney	46, 89, 137, 140
King, William	18
Kivlighn, Joanne, Oxford	56, 77, 83, 135, 137
Kirwin, Myron, Gibbon	62, 72
Kirwin, Emil, Gibbon	62, 72
Klein, Dorothy	19
Knapp, Gerald, Kearney	56
Koch, Rodney, Eustis	29
Koci, George, Edgar	56, 137
Kohn, Douglas, Beaver City	56
Korcek, Fred, Shelton	62
Korcek, James, Shelton	62
Kort, Wesley, Blue Hill	56, 87, 95, 101
Kremer, Marilyn, Aurora	46, 76, 95
Kring, Dean, Axtell	56
Kroeger, Barbara, Litchfield	56, 137



Kruger, Jim, Sidney	86, 95, 101, 103
Krzycki, Viola, Elba	46, 77, 81, 91
Kuhlmann, Arlene, North Platte	46, 137
Kuklish, Dorothy, Sargent	46, 91

## L

Labart, Donna, Grand Island	56, 137
Lacker, Meldon, North Platte	56, 72
Laguna, Rosie, Hershey	46, 79, 84
Laird, Leo, Republican City	56, 91
<b>Lambda Delta Lambda</b>	<b>71</b>
Landers, Roderick, Gothenburg	29, 71, 72
Lange, Clarence, Ord	56
Lanquist, Joan, Loomis	46, 82
Lapp, Margaret, Kearney	56
Larreau, Jean, Arnold	56, 75
Larsen, L. M.	19, 71
Larsen, Linda, Gothenburg	56, 75, 83, 135, 137, 139, 140
Larson, William Holdrege	56, 135, 139
Larson, Minnie	19, 72
Laux, Myrtle, Minden	38
Lawrence, Billy, Kearney	56
Leder, Sharalyn, Lewellen	57, 80
Lees, Betty, Shelby	57, 83, 96, 135
Leibee, Dan, Kearney	57
Lehmann, Sherman, Eustis	62, 94
Lempka, Kenneth, Minden	137
Lewandowski, Alfred, Mitchell	57, 95, 114
Lewis, Leander, Kearney	62
Lewis, Margaret, St. Libory	46, 90
Lewis, Richard, St. Libory	57
Lewis, William, Cozad	57, 135
Linch, Stanley, Kearney	137
Lindholm, RoDonna, Polk	29, 68, 84, 92, 129
Lindley, Bruce, Lodgepole	38, 86
Lippstreu, Clarence, Hildreth	38, 72
Lloyd, Darrel, Kearney	107, 108, 111, 114, 118
Lloyd, Roberta, Kearney	46
Lockhorn, Lenore, Ravenna	46
Lorenzen, Anita, Sutton	46, 82, 135, 137
Losehen, Elaine, Kearney	38
Lowe, Janet, Alma	38, 92
Lowell, Melvin, Kearney	62
Luce, George, Poole	57
Lueking, Anita, Atlanta	46
<b>Lutheran Students Association</b>	<b>94</b>
Lybarger, Addie, Grand Island	30, 73, 75
Lynn, William	19, 137

## Mc

McAfee, Lois, Belgrade	46, 133, 137
McC Campbell, Roger, Weston	62
McCauley, Mary, Merna	30
McClure, Margaret	19
McConkey, Richard, Blue Hill	57, 137
McCormick, Laird, Kearney	38, 78, 135, 137, 139, 140
McElravey, Melvin, David City	57, 88, 137
McFarland, James, Sumner	57, 95, 101, 103, 114, 117
McGinnis, Rex, North Platte	30, 72, 89
McInnis, Kenney, Ravenna	57
McKibbin, Larry, Kearney	57, 137
McLaughlin, Patty, Woodburn, Oregon	46, 95
McMahon, Robert, Arnold	30, 72

## M

Magette, Shirley, Kearney	68, 74, 79, 81
Main, Donald, Sutherland	46, 87, 137
Main, Kenneth, Sutherland	46, 87, 114, 137, 140
Manfull, Barbara, Gibbon	47, 82, 96
Mangan, Margot, Kimball	57, 72
Manhart, Mary, Orleans	47, 91
Mantor, Bernice	19
Mantor, Lyle	19
Margritz, Shirley, Lexington	38
Marlatt, William, Kearney	38, 71, 90
Marsh, Donna, Hastings	57

Martin, Donna, Kearney	57, 83
Mattson, Clark, Kearney	57, 88, 114, 137
Max, Twila, Cambridge	47
Maxey, Gene, Republican City	38, 79, 89
Maxwell, Richard, Sutherland	57
Menaqh, Isabel, Elm Creek	57
<b>MENC</b>	<b>75</b>
<b>Men's League</b>	<b>97</b>
Merryman, William, Kearney	57, 137
Messman, Ron, Grafton	57, 135
Messman, Warren	19
Meyer, Eleanor, Scotia	57
Meyer, Jo Anne, Scotia	30, 68, 72, 73, 74, 84
Meyer, J. D., Lodgepole	71, 85
Meyer, Jacquelyn, Kearney	57, 76, 80, 91
Meyer, Jerrold, Lodgepole	72, 86
Meyer, Russell, Lodgepole	47, 86
Meyer, Ruth Ann, Lodgepole	57, 80
Miller, Douglas, Elm Creek	57, 135, 139
Miller, Robert, Hendley	38, 89, 114, 116, 137
Mills, David, North Platte	30, 89, 95, 107, 109, 110, 114
Milne, Sue, Grand Island	57, 72
Misener, Irene, Hastings	57
Mitchell, James, Orleans	47, 75, 89, 135, 137, 140
Mitchell, Janet, Orleans	30, 68, 72, 73, 75, 79, 82, 128
Mitchell, Joyce, Orleans	57, 75, 83, 135, 137, 140
Modrell, James, Palisade	57
Moes, Lucille, Kearney	57
Mohler, Jerry, Lincoln	57
Molley, Bernard, Broken Bow	57, 87
Moody, Gene, Purdum	57
Moon, Virginia, Kearney	38
Moor, Burdette, Holdrege	57, 87
Moor, Gordon, Holdrege	31, 71, 72, 86
Morris, Alan, Kearney	47, 71, 72, 89, 95, 114, 117, 137, 140
Morris, Roger, Beatrice	57, 87
Morris, Thomas, Benkleman	57
Morris, William	19, 107
Morse, Mary	91, 71
Mosel, Larry, Brule	57, 95, 101, 106
Moss, Bill, Kearney	38, 95, 101, 104, 114, 118
Mousel, Marie, Juniata	57, 83, 91, 137
Muehling, Eldon, Deshler	58, 135
Mueller, Carl, Amherst	58
Mumford, Delores, Oshkosh	58
Mundt, Betty, Hampton	47, 75, 92, 94, 137
Munson, Donald, Kearney	58, 135, 139

## N

Naylor, Dagmar, Kimball	47, 76, 96, 135, 137, 140
Nealson, Margaret, Greeley	47
Nekuda, Don, Sargent	58
Nelson, Jack, Kearney	38, 101, 114, 132
Nelson, Donna, Sargent	76, 58
Nelson, Gerald, Grand Island	47
Nelson, James, Stuart	47, 86
Nelson, Kay, Kearney	58, 83, 187
Nelson, Kyler, Kearney	38, 101, 89
Nelson, Maurice, Funk	47, 90, 94, 135, 137
Nelson, Park, Boelus	47
Nelson, Ronald, Kearney	58, 135, 137, 139, 140
Nelson, Theodora	20, 71
Neujahr, Janice, Ulyses	58, 76, 137
<b>Newman Club</b>	<b>91</b>
Nichols, Clarence, Riverton	
Nickerson, Barbara, Farnum	58
Nicholson, John, Grand Island	72
Nickman, Eugene, Pleasanton	58, 101, 103
Nicodemus, Marci, David City	58, 80, 135
Nigh, Edna	20
Nilson, Mark, Aurora	58, 95
Nordbrock, Connie, Alma	38, 69, 70, 82, 127
Norlbrock, Gerald, Wilcox	39, 137, 140
Novasad, Amelia, Ord	39, 73, 82, 137, 140
Novy, Lyman, Ravenna	58, 94, 135
Nutter, Joyce, Thedford	31



# O

Ockinga, Clara	20, 82
Olmsted, Elnor, Beaver City	47, 83
Olsen, Otto	20
Olson, Karen, Gothenburg	58, 83
Olson, Patricia, Imperial	47, 76, 90, 92, 95
O'Neill, Donald, Ravenna	58
Osmera, Alvin, David City	58, 88, 114
Orcutt, Dorothy	77
Ortgiesen, JoAnn, Wilcox	58, 137
Osterhoudt, Elaine, Curtis	58, 83
Osterhoudt, Howard, Kearney	39
Osterlund, Robert, North Platte	31
Ostgren, Myrl, Holdrege	135, 139
Ott, Patricia, Republican City	58, 76, 80
Otto, Paul, Yoder, Wyoming	58
Ottun, Donna, Sargent	58, 76
Owens, Steve, Kearney	58, 87, 95

# P

Paine, Alice	20
Paitz, Monica, Pleasanton	58, 76, 90, 91, 133
Palmer, Janice, Elm Creek	58, 92, 137
Patsios, Bill, Athens, Greece	47, 90
Patsios, Nick, Kearney	58
Patterson, Ronald, Gothenburg	39, 86
Patton, Frank, Grand Island	58
Paulsen, Sonja, Aurora	47, 76
Pavelka, Edwin, Fairfield	58
Peak, Mary Ann, Orleans	39, 82, 137
Pederson, Richard, Curtis	39, 132
Peister, Paul, Kearney	58, 75, 135, 137
<b>P. E. M. M.</b>	<b>75</b>
Peters, Robert, Kearney	58
Peterson, Larry, Axtell	48, 72, 90, 135, 137, 140
Peterson, Richard, Hayes Center	58, 91, 114
Petitt, Jean	15
Pfeiffer, Robert, Amherst	39
Pfeiffer, Robert B., Elwood	31
Pfester, Emily, York	48, 76, 137
Pflaster, Alvie, Sumner	58, 88, 114
Phillips, Rodney, Arapahoe	31
<b>Phi Tau Gamma</b>	<b>88</b>
<b>Pi Kappa Delta</b>	<b>70</b>
<b>Pi Omega Pi</b>	<b>69</b>
Piskorski, John, Ord	58
Piskorski, Martin, Ord	58
Plettner, Glenn, Exeter	58
Pollat, Erin, Cozad	58, 72, 137
Pope, Russell, Arnold	31, 95, 114
Pottinger, Robert, Kearney	59
Pramberg, Duane, Gothenburg	59
<b>Pre-Med Club</b>	<b>72</b>
Price, Tom, Thedford	114
Purinton, Sharon, Overton	59, 95, 137
Pursel, Carole, Big Springs	59, 83

# Q

Quinn, Leslie, Ainsworth	59
--------------------------	----

# R

Raburn, Harold, McCook	39
Rademacher, Robert, Loup City	48, 69, 89, 132
Rader, Marvin, Kearney	114
Radke, Bob, Big Springs	91
Radford, Rex, Kearney	62
Rahmeyer, Elnora, Kearney	59, 133, 135
Rahrack, Barbara, Wood River	48, 80, 91
Ramsey, Jearld, Grand Island	59, 88
Rasmussen, Bob, Exeter	62
Rathe, Carol, Kearney	39, 68, 69, 73, 75, 84, 137, 139, 140
Raveling, Goldie, Hildreth	90, 62
Rauert, William, Grand Island	48, 87
Reed, Marilyn, Elm Creek	59
Reher, Sharonne, Grand Island	48

Reicks, Charles, Elm Creek	59
Reiman, Edward, Kearney	114
Reinertson, Marilyn, Hazard	59, 76, 80
Remy, Richard, Kearney	48, 78
Reynaga, Josie, Grand Island	48, 137
Reynolds, Mary, Sargent	
Reynolds, Monte, Fairbury	31, 81
Rice, Janice, North Platte	48, 137
Richards, Vera, Wray, Colo.	31
Richardson, Dean, Riverton	
Richardson, Marvin, Guide Rock	59
Richter, Joan, Kearney	59, 76
Ricketts, Marilyn, Franklin	59, 76, 85
Rippen, Leora, Gothenburg	48, 69, 75, 82, 140
Roberts, David, Kearney	59, 135
Roberts, Phyllis	20
Robertson, LaVerne, Lodgepole	48, 86, 137, 140
Robinson, Alice	20
Robinson, Carolyn, Aye	59
Robinson, Frank, Kearney	59, 135, 139
Robinson, Patricia, Kimball	48, 84, 92, 137
Rockwell, Barry Lee, Grand Island	59
Roggy, Ron, Grand Island	101, 105, 95, 114
Rohde, Glenn, Eddyville	101, 104, 95, 116
Rohrs, John, Kearney	59
Rolfsmeyer, Dean, Bertrand	62
Rolland, Yvonne, Republican City	59, 76, 92
Ronne, Delores, Lushton	59, 76, 92
Rork, Alita Kay, Lexington	59
Rosencrants, Robert, Maxwell	48
Roucis, Patricia, Broken Bow	39, 68, 74, 132, 133
Rowland, John, Farnum	59, 107, 110, 33, 114
Ruebsamen, Merna, Giltner	59, 83
Rumbeck, Cherie, Amherst	48, 85, 137
Russel, Jessie, Wallace	59
Rutt, Charlene, Hastings	59, 94, 135
Ryan, C. T.	20
Ruybalid, Evelyn, Grand Island	59

# S

Sampson, Helen	20
Sand, Royal, Funk	48, 86, 94, 137
Sanders, Donna, Ravenna	59, 135, 137
Scarborough, Donna, St. Paul	84
Scheirman, Barbara, Sutton	59, 75, 77
Schloatman, Elnora, Arnold	62
Schmidt, Harry, Minden	59, 137
Schmidt, Orville, Elm Creek	48
Schmitz, Raymond, Kearney	39
Schnackenberg, Lexington	72, 114
Schuller, Ronald, Ravenna	48, 90
Schulte, Beverly, Scottsbluff	39
Schwartz, Clara, Broken Bow	32
Scott, Clayton, Grand Island	39, 88, 95, 114, 119
Scoville, Robert, Campbell	59
Scranton, Peggy, Potter	90, 95
Seymour, Jack, Grand Island	49
Shackelford, Duane, Trenton	39, 68, 69, 72, 89, 130
Shada, Wayne, Ansley	49
Shaffer, Bill, Litchfield	39, 87, 114
Shaffer, LaVonne, Willow Island	49, 76, 94, 137
Shaffer, Shirley, Alma	49, 69, 82
Shiltz, William, North Platte	39, 135, 137
Siebeck, Thelma, Cambridge	59
<b>Sigma Tau Delta</b>	<b>74</b>
<b>Sigma Theta Phi</b>	<b>82</b>
Simon, Sharon, Cambridge	59, 80, 135
Sinnen, Dallas, Minden	40, 90, 137, 140
Sitorius, Howard, Gothenburg	59, 114
Sitzman, Shirley, Cheyenne, Wyoming	59, 75, 77, 83
Skinner, Blanche	21
Skov, Leonard, Riverdale	73, 78
Skow, Dale, Gibbon	49
Slattery, Larry, Paxton	59
Slingsby, Bernard, Arcadia	60
Smallcomb, Oren, Kearney	72
Smets, Jim, Broken Bow	60
Smith, Barbara, Bridgeport	31, 90



Smith, James, Kearney	60
Smith, Janice, Kearney	60
Smith, Jean, North Platte	60, 85
Smith, Marjorie, Callaway	49, 137
Smith, Dayne, Madrid	49, 72, 89, 95, 101, 102
Smith, Roger, Cascade	60
Smith, Shirley, Kearney	60
Smithey, Edith	21
Snell, John, Juniata	49
Sottley, Beverly, Madrid	60, 76, 77, 137
Sohrweid, LaVonne, Riverdale	31, 82
Sorensen, Willis, Kearney	62
Spargo, Richard, Franklin	60, 137
Spencer, Berl, Broken Bow	49, 71, 72
Spilnek, Alice, Ord	31
Spray, Mary, Crawford	60, 83, 137
Springer, Joyce, Phillips	49, 76, 95, 135, 137, 140
Stahn, Mary Lou, Orleans	49, 81
States, Jerry, North Platte	60, 72, 88
Stautemeyer, Maloira	21
Stear, Sharon, Cozad	60, 83, 135
Stebbins, Opal, Farnam	49
Stegman, Dollie, Nora	49, 76, 84, 92, 133
Stemper, Robert, Bellwood	49, 89, 91, 95
Sterling, Riley, Greeley	60
Steward, Marilyn, Big Springs	60, 76, 85, 92
Steward, Shirley, Big Springs	60, 76, 92
Stobbe, Janina, Loup City	60, 72
Stolz, Paul, Grant	60, 90, 114, 135
Stone, Raymond, Comstock	60, 114
Stone, Leo, Broken Bow	60, 87
Straney, Don, Minden	40, 72, 89, 95, 114, 116, 135, 137, 140
Stransky, Jack, Madrid	49, 89, 114, 137
Stransky, Marlene, Madrid	60, 83, 137
Strasburg, Katherine, Central City	49, 75, 77, 80, 135
Strong, Lynn, Almeria	60
<b>Student Council</b>	<b>66</b>
<b>Student Wives</b>	<b>78</b>
Stubbs, Keith, North Platte	60, 87
Stutheit, B. F.	15, 78
Sundemeier, Marilyn, Cairo	62
Surber, Larry, Gothenburg	60, 137
Surface, Bill, Kearney	60, 88, 95, 101, 102, 114, 116
Sutherland, Delmar, Elm Creek	49, 132
Swanson, Jack, Aurora	40, 71, 95, 139
Swanson, James, Aurora	49, 71, 95
Swift, Ralph, Amherst	60, 114
<b>Symphony Orchestra</b>	<b>138</b>

## T

Talbert, Mary, Valley	31, 68, 82, 91, 137
Tatum, Loren, Wauneta	50
Taubenheim, Monica, Kearney	31
Taylor, Dale, Chappell	31, 88, 95, 101, 104
Taylor, Eugene, Kearney	31
Taylor, Jack, Kearney	114
Teahon, Richard, Broken Bow	60, 72
Tegler, John, Grand Island	60
Teter, John, Bartley	60
Tetzlaff, Andrew, Orleans	40, 137, 140
Thiel, Dwight, Alda	33
Thomas, Coleen, Mitchell	60, 75, 83
Thomas, Dick, Sumner	33
Thomas, Gary, Kearney	33, 68, 73, 79, 89, 135, 137, 139, 140
Thomas, Leo	15
Thompson, Loren, Kearney	60
Thompson, Marian, Cairo	40
Thorell, Jim, Loomis	95, 100, 101, 103
Thorell, Stuart, Loomis	95, 101
Thorp, Robert	14
Thurin, Leland, Ong	40, 95, 101, 106, 107, 111, 114, 116
Thurman, Joan, Oconto	50, 92
Thurston, Shirley, Kearney	81
Tieken, Gene, Waco	50
Tilgner, Patricia, Wellen	60
Tilmanis, Anita, Kearney	40, 72, 81
Tilmanis, Agate, Kearney	60, 80

Timmerman, Larry, Sutton	60
Tinker, Charles, Omaha	60
Titterington, James, Kearney	60
Tjaden, Bill, Madrid	88, 137
Tomlinson, Donald, Ravenna	50, 90, 94
Towers, Joyce, Maxwell	40, 82
Treadway, Robert, Kearney	50
Trindle, John, Kearney	62
Trotter, James, Ansley	60
Troyer, Glen, Westerville	50, 104, 107, 110, 114, 119
Tucker, Bonnie, Loup City	50, 82
Tucker, Lawanna, Grand Island	60
Tucker, Zoe Ann, Grand Island	40, 82, 96
Tunnell, Geniece, Stapleton	33, 75, 77, 92
Turnbull, Danny, Dix	61, 88
Turner, Leo, Elm Creek	50, 114

## U

Underhill, Glen, Trenton	33, 71, 90, 94, 95, 132, 133
Underwood, Anne, Lexington	40, 90, 132
Urwiller, Stanley, St. Michael	61, 90, 94, 135

## V

Valdez, Valdemar, Antonio, Colorado	50
Van Camp, Karen, Riverton	61, 76, 85, 135, 137, 139
Vandruff, Willard, Holbrook	33, 72
Van Dyke, Maurice, Broken Bow	61
Van Horne, Michael, Kearney	51, 114, 117
Vest, Donna, Overton	61
<b>Vets Village Council</b>	<b>78</b>
Viren, Barbara, Holdrege	61, 83, 94, 135, 137
Volsteadt, Robert, Bonesteel, South Dakota	31, 78
Von Ohlen, Betty, Grand Island	61, 137

## W

<b>WAA</b>	<b>77</b>
Waddington, Ralph, Cairo	50
<b>Wagoneers</b>	<b>150</b>
Walker, Ruby, Shelton	33
Walkup, Shirley, York	50
Walters, Ronald, Sutton	61, 87
Watkins, Ramona, York	34
Watson, Nadine, Benedict	50
Wear, Mary Alice, Big Springs	40, 82
Webster, Romaine	21
Welch, Roland	21
Welker, Janice, David City	50, 82, 135
Welker, Richard, David City	62
Wells, Morgan, Axtell	50, 95
Welsbacher, Richard	21
Welte, Marjean, Ansley	61, 77, 91
Welty, Donald, Kearney	50, 69, 137
Westerbuhr, Larry, Hildreth	50, 72, 94
Westeson, John, Kearney	62
Weston, Bernice, Gibbon	50
Wetovick, Gerald, Kearney	51, 71, 72, 91
Whartman, Gordon, Grand Island	61
Wheeler, James, Ainsworth	86
Whitcher, Charles, Kearney	62
White, Catherine, Alliance	61
Whitesel, Lyle, Miller	40, 86
Whitfield, George	21, 139, 91
Whiting, Marcelyn, Ord	51, 77
Whitney, Marilyn, Funk	34, 68, 72, 74, 76, 84, 135, 137, 139, 140
Wichman, Maynard, Loup City	91
Wilkee, Eldon, Loup City	61
Williams, Dorothy	21, 68
Williams, Leslie, Grand Island	61
Williams, Nadia, Kearney	61, 76, 83, 137
Williams, Wayne, Madrid	137
Wilmot, Duane, Wilsonville	61, 114
Wilson, Mildred, Kearney	34, 128
Wilson, Paul, Bradshaw	51, 114
Windels, Donna, Paxton	61, 83, 94, 137
Winfrey, Janice, Hastings	51, 76, 95, 137
Wink, John, Kearney	62

Wise, Dean, Sidney.....	40, 72, 79, 86, 101, 105
Wise, Nancy, Lodgepole.....	61, 76, 83, 135, 137
Wissbaum, Rene, Kearney.....	83, 91
Witt, Paul, Litchfield.....	61
Witters, Jeannette, Sidney.....	61, 80
Wittrock, Art, Dix.....	61, 87
Wolf, Norma, Kearney.....	62
<b>Women's League</b> .....	<b>96</b>
Woodruff, Shirley, Grand Island.....	61, 92
Wright, Jo Ann, Crete.....	40
Wright, Lewis, Kearney.....	40
Wurdeman, Norine, Columbus.....	61, 80
Wyatt, Rose, Kearney.....	61
Wyckoff, Elsie, Brewster.....	51

## X

<b>Xi Phi</b> .....	<b>68</b>
---------------------	-----------

## Y

Yanney, Michael, Kearney.....	34, 68, 70, 73, 89
Yant, Ginger, Portland, Oregon.....	51, 137
Yingling, Harriet.....	21, 75
Jost, Janet, Central City.....	61, 75, 77
<b>YMCA</b> .....	<b>94</b>
<b>YWCA</b> .....	<b>92</b>

## Z

Zabrzewske, Mary Ann, Ogallala.....	61, 83, 91, 137
<b>Zeta Chi Alpha</b> .....	<b>84</b>
Ziegenbein, Bonnie, Ashland.....	61, 85
Zimmerman, Neva, Beatrice.....	61, 80
Zink, Arden, Indianola.....	61
Zubrod, Ronald, Juniata.....	61, 91



