

Leland C Copeland Hall

Copeland Hall is the oldest building on campus. It began life as a gymnasium, succeeding a still older structure.

The first campus gymnasium was built in 1911. Work began on January 7, 1911, under the direction of Physical Director G. J. Van Buren. Completed just a few weeks later, it was a wooden structure 60 feet by 80 feet, with a 28-foot ceiling. It had a 75-yard cinder track, and was used for track, indoor baseball and basketball. The only heating was provided by two oil stoves. An article in *The Antelope*, the student newspaper, on January 10, 1913, noted that "This building is not well-equipped, and the student body hope someday not far off to see a beautiful building on the Normal campus delegated [sic] to athletics and sports of all kinds."

On June 23, 1916, a \$50,017 contract was awarded to Walter Knutzen, general contractor, for construction of the new gym building. It was completed in 1918, and was known simply as the Gymnasium.

Among the athletic facilities included in the Gymnasium was a swimming pool. This pool was repaired and renovated in 1927-1928, and reopened on March 19, 1928. The pool was closed in September 1937, when the City of Kearney Health Department ordered that "the pool shall remain closed until all apparent threat of poliomyelitis is gone." After thorough cleaning and painting, the pool reopened a few weeks later.

The building was renovated in 1939.

A new scoreboard was dedicated in January 1944.

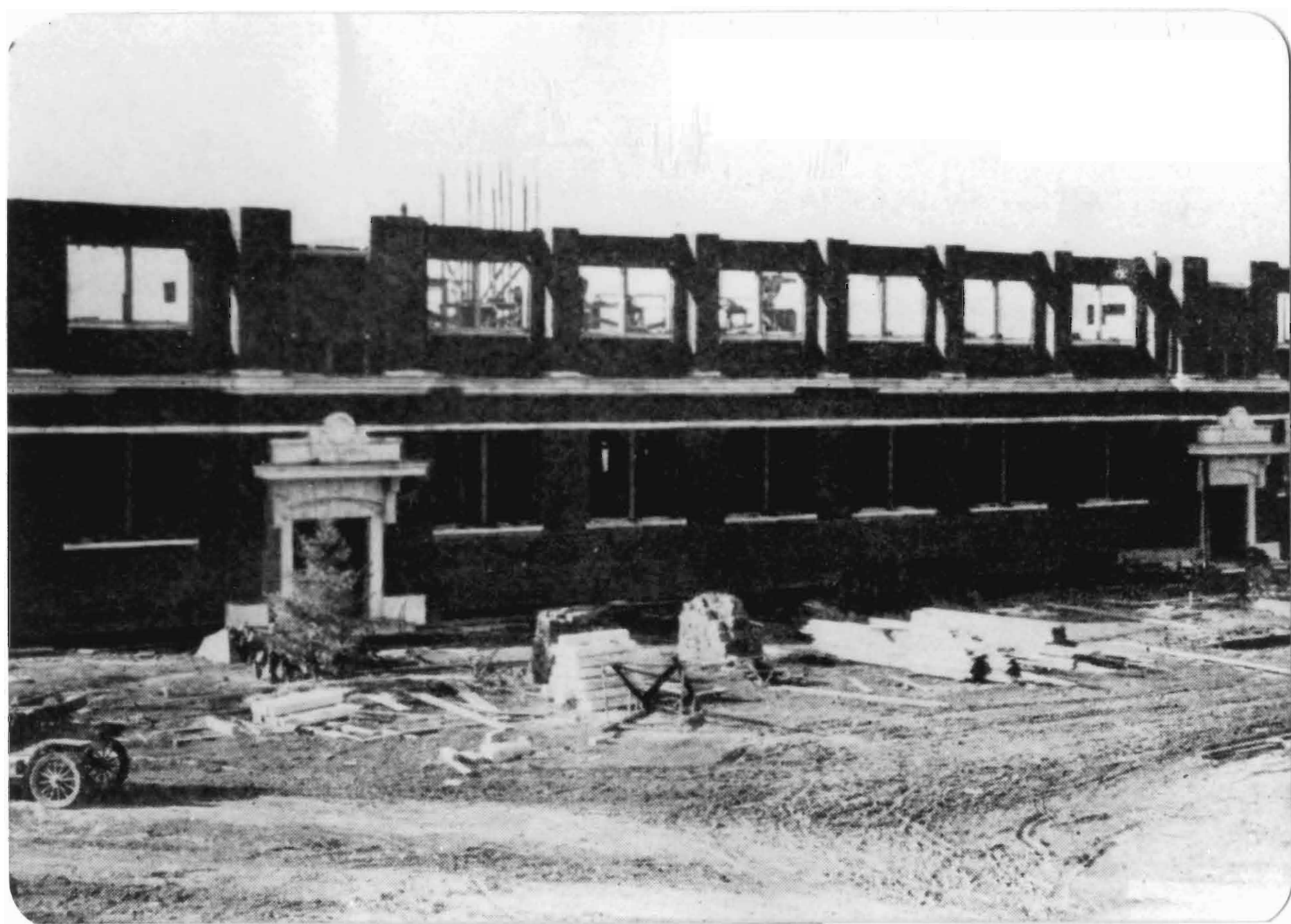
When Cushing Coliseum was opened in 1962, the Gymnasium became the "Auxiliary Gymnasium," and bore that name until 1980 when it was named for Leland C Copeland. Mr. Copeland had been assistant football coach from 1946 to 1962, and assistant track coach from 1946 to 1961, but he had always been most interested in intramural sports, and had been ahead of his time in organizing the Kearney Jogging Club in 1960.

In 1977, the building received new windows and doors, and the decorative lintels were removed from above the doors. Further improvements were made in 1993, and in 1996 a major renovation and expansion was completed, which cost \$4.2 million, and added 25,000 square feet.

Leland C Copeland Hall now (2009) houses Geography and Earth Science, Sociology, Psychology, and History, with classroom and lecture hall facilities.



Original Gymnasium Building, 1912



Gymnasium Building Under Construction, 1916

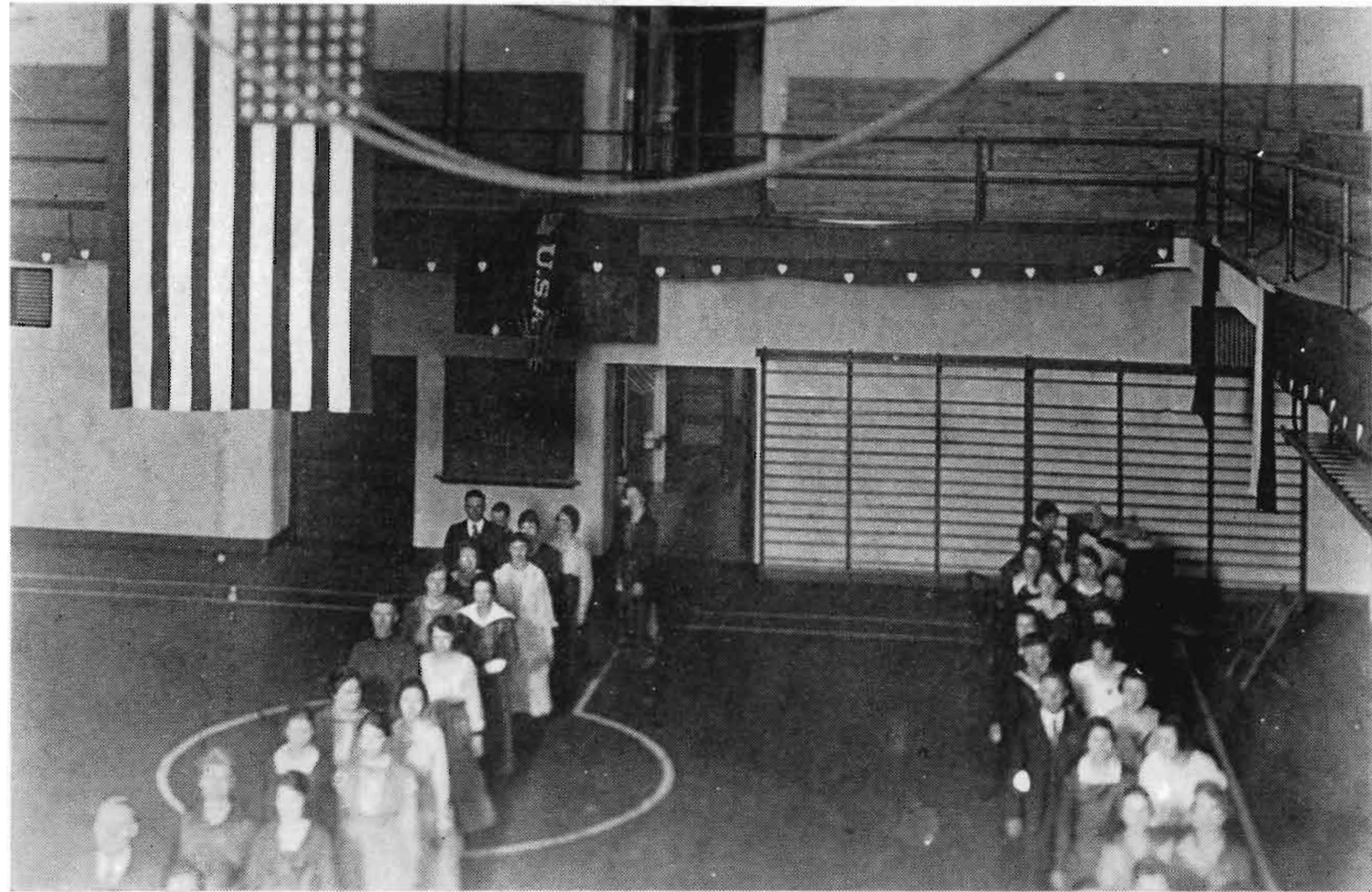


27-B

Banquet Held on Second Floor of Gymnasium, 1917. This Was the First Event Held in the Building; It Had Not Been Completed Faculty Are Seated at Table Nearest the Camera Note Flowers Festooning the Basketball Hoops



**Swimming Pool, Gymnasium, About 1918
Windows Are On the West Wall**



Main Floor of Gymnasium, About 1919
This Photo Appeared in the 1919 Blue and Gold



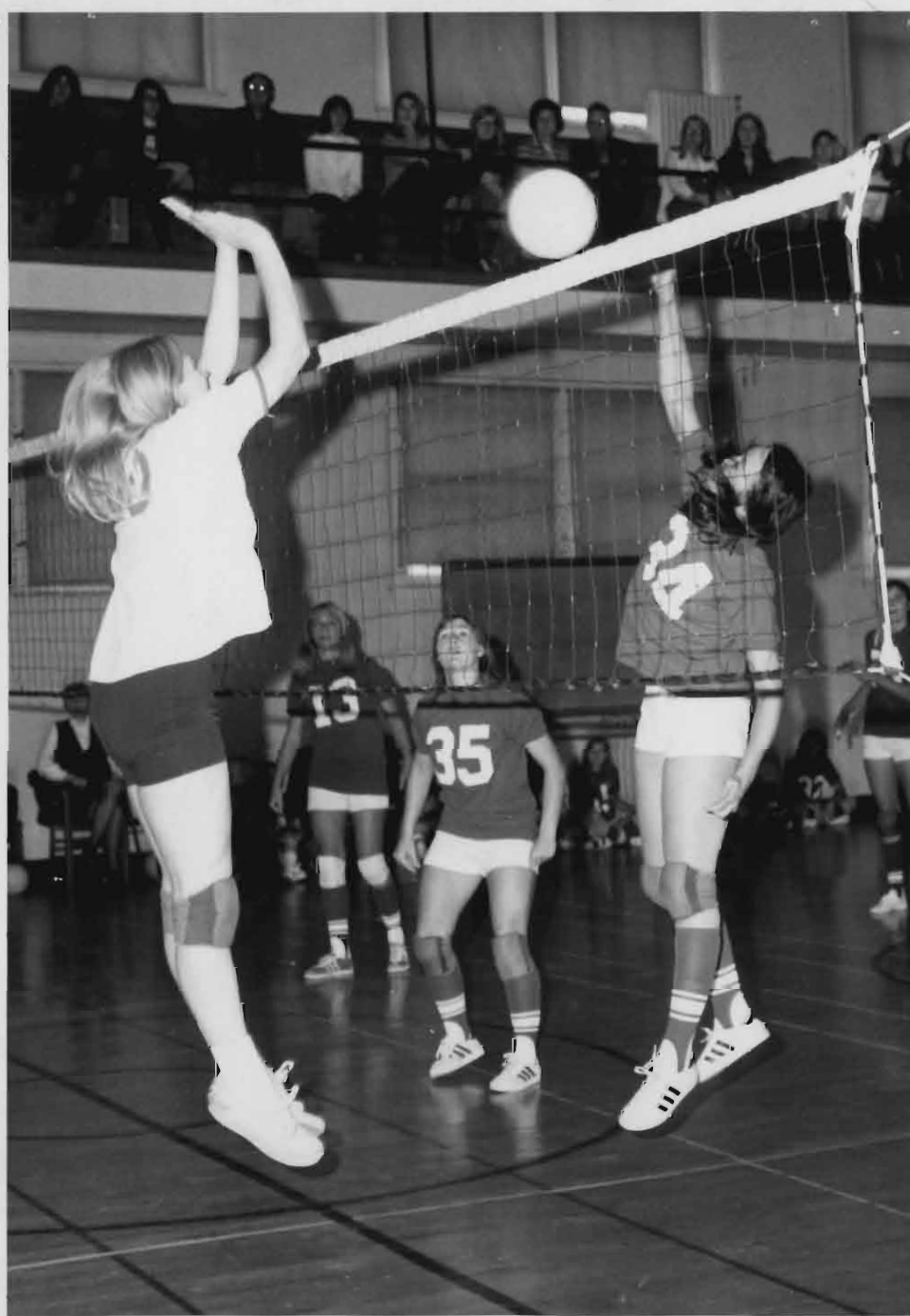
**Swimming Class in Gymnasium Swimming Pool
This Photo Appeared in the 1919 Blue and Gold**



**Gymnasium From Roof of Administration Building, About 1920
Green Terrace Hall Is On the Right
View Is To the Northwest**



Event in Gymnasium, Date Unknown [1930's?]



Volleyball in Gymnasium, 1960's



Gymnasium from the Southeast, 1950's



Auxiliary Gymnasium from the Southeast, 1957



Auxiliary Gymnasium from the Northeast, About 1970



Auxiliary Gymnasium from the Southeast, 1972



Auxiliary Gymnasium from the Southeast, 1974



Southeast Corner of Auxiliary Gymnasium, ca. 1976



New Windows for Auxiliary Gymnasium, 1977



**Auxiliary Gymnasium As It Appeared After Improvements
To Windows and Doors In 1977**



Copeland Hall from the Southwest, April 2009



Copeland Hall from the West, April 2009



Copeland Hall from the Northeast, April 2009



1996 Addition to Copeland Hall from the Southeast, April 2009



Copeland Hall from the Southeast, 1996 Addition on Right, April 2009



Copeland Hall from the Southeast, Original Building on Left, April 2009



1996 Addition to Copeland Hall from the South, April 2009



Copeland Hall from the South, April 2009. 1996 Addition on Right.



First Floor Hallway, Copeland Hall, April 2009



Lecture Hall, Copeland Hall, April 2009