

Fine Arts Building

Bids were accepted by the Board of Trustees on May 15, 1968. The architects were Helleberg and Helleberg of Kearney. The general contractor was B. J. Frick Construction Company of Salina, Kansas, which submitted the winning bid of \$984,360. Arthur Hilberg of Kearney submitted the winning bid of \$274,050 for the mechanical work. Holdrege Electrical Company won the electrical work with a bid of \$179,179. The entire building, including pianos, cost \$1,649,107, of which \$440,107 was Federal money and \$1,209,000 was State of Nebraska money. The building was under construction for eighteen months, and was occupied in December 1969.

The building's 66,660 square feet included a 334-seat theater, and a 506-seat lecture/recital hall. Also included were 12 faculty offices, classrooms, a scene shop, a costume room, a band room, a choral room, and practice rooms.

The building was dedicated in April 1970 with three events: a formal dedication ceremony on April 12, 1970, a student recital on April 15, 1970, and an open house on April 19, 1970, which was attended by over 800 people.

The "Art Wing" which extends westward from the performing arts portion of the building was occupied in January 1980. Ground was broken on October 3, 1978. The art addition cost \$731,790, of which \$580,000 was State of Nebraska money; the remainder came from the Kearney State College Foundation. The Foundation money included an anonymous donation of \$50,000.

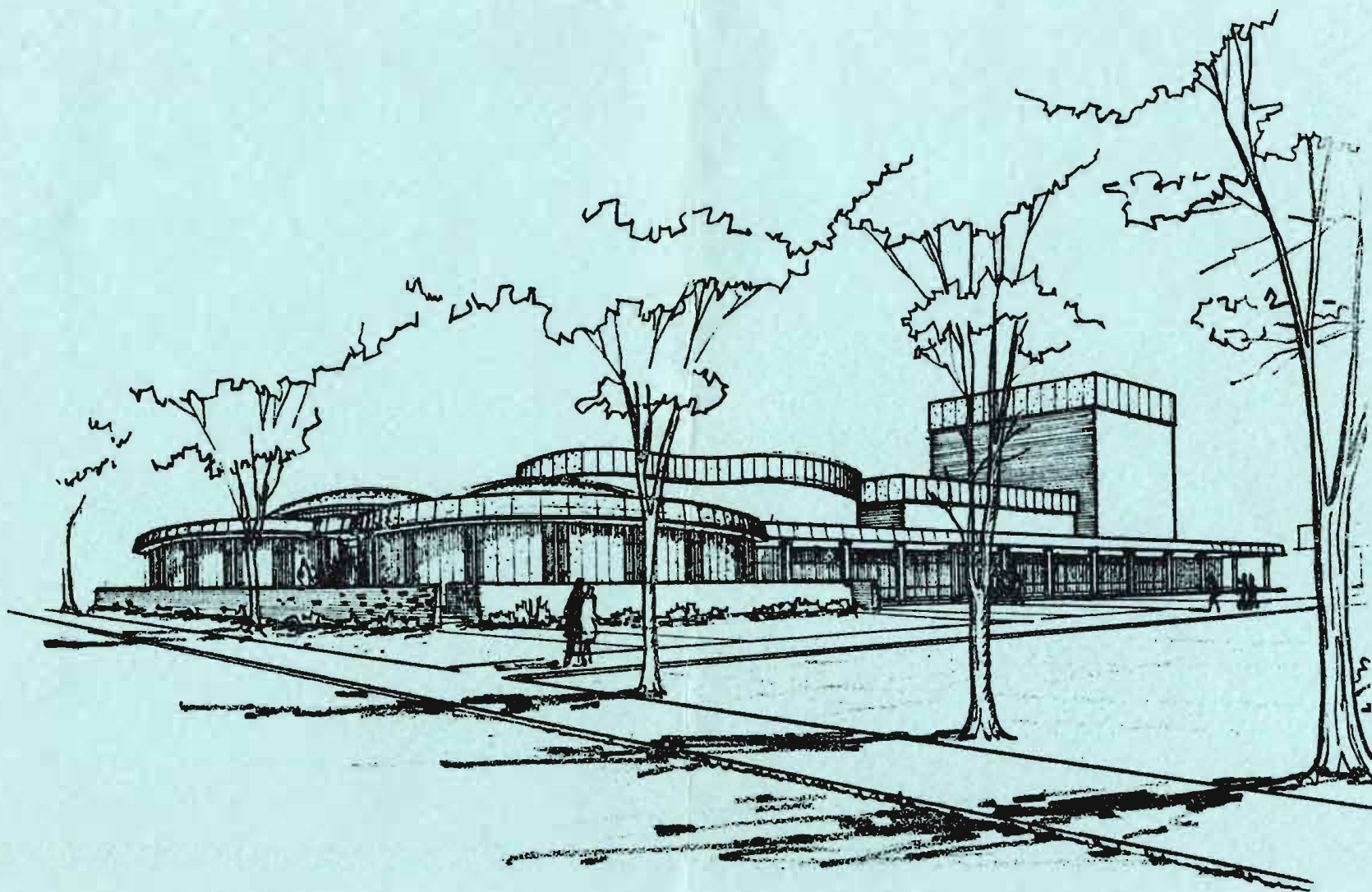
Jack Wilkins was the architect; the 23,000 square foot addition includes an art gallery, classrooms, working areas, gallery storage, and eleven faculty offices.

The addition currently displays the statue "Winged Victory" which was donated by the class of 1907, as well as the original Parthenon friezes donated by the class of 1911, which were for decades part of the decoration of the auditorium in the Administration Building, or "Old Main."

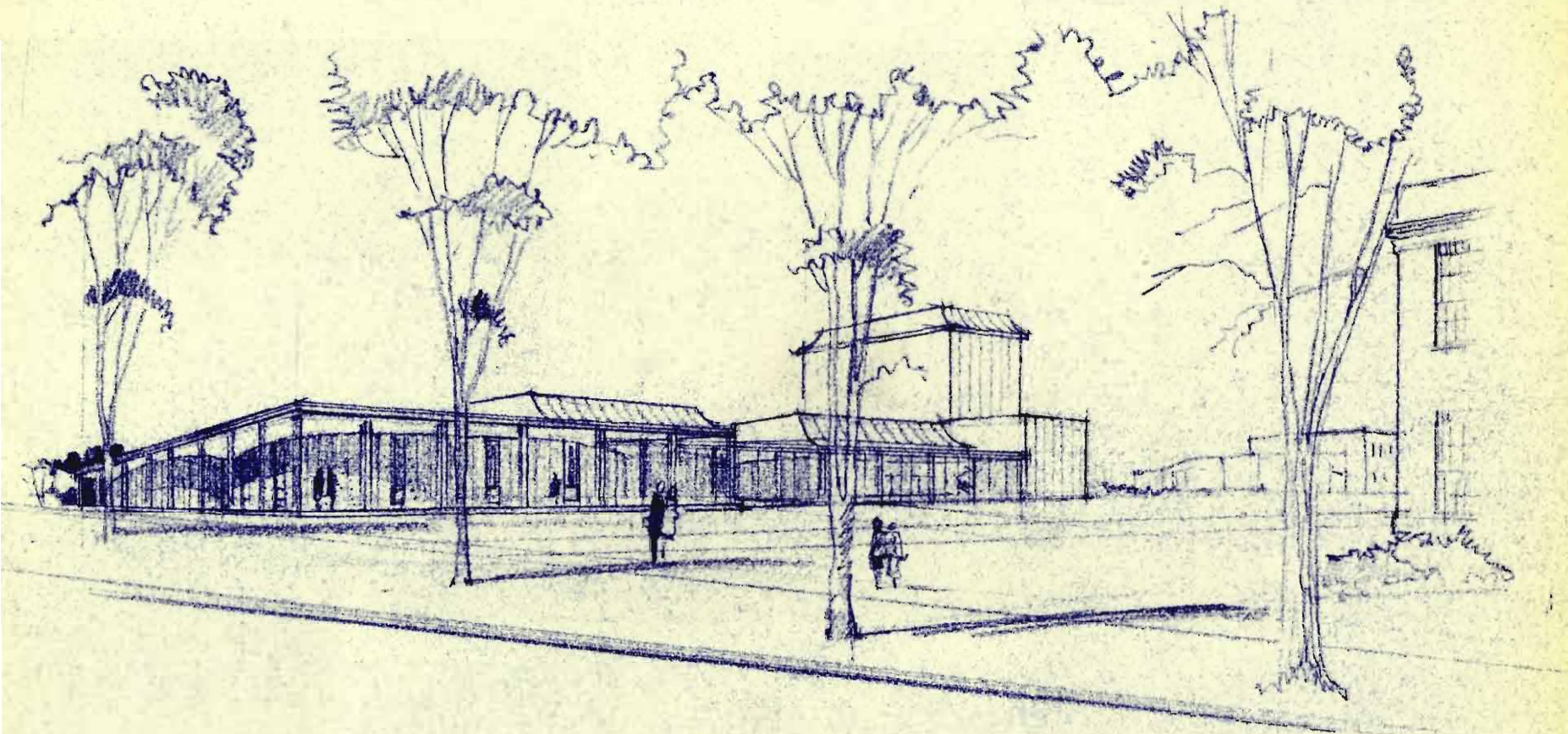
Pipe Organ

During the 1920's the Alumni Association raised funds for the purchase and installation of a large pipe organ. The Estey organ, with over 1,000 pipes, was dedicated during the 25th Anniversary celebration in 1930, and dedicated to Harriet Sutton, a former physical science instructor and past secretary of the Alumni Association, who initiated the organ fund.

In April 1982, the Vaughan Organ Company of Holdrege was contracted to install a large organ with 1,600 pipes in the recital hall of the Fine Arts Building. This was made possible by a grant of \$60,000 from the Ellen Baldwin Craig Foundation. The new organ incorporated 90 of the pipes from the 1930 Estey organ, which had been disassembled and stored when the auditorium in the Administration Building was condemned as unsafe by the State. The work was finally completed and the organ dedicated in May 1986. Although quite large, it is only the second largest in Kearney; the Episcopal Church about the same time installed one twice as large.



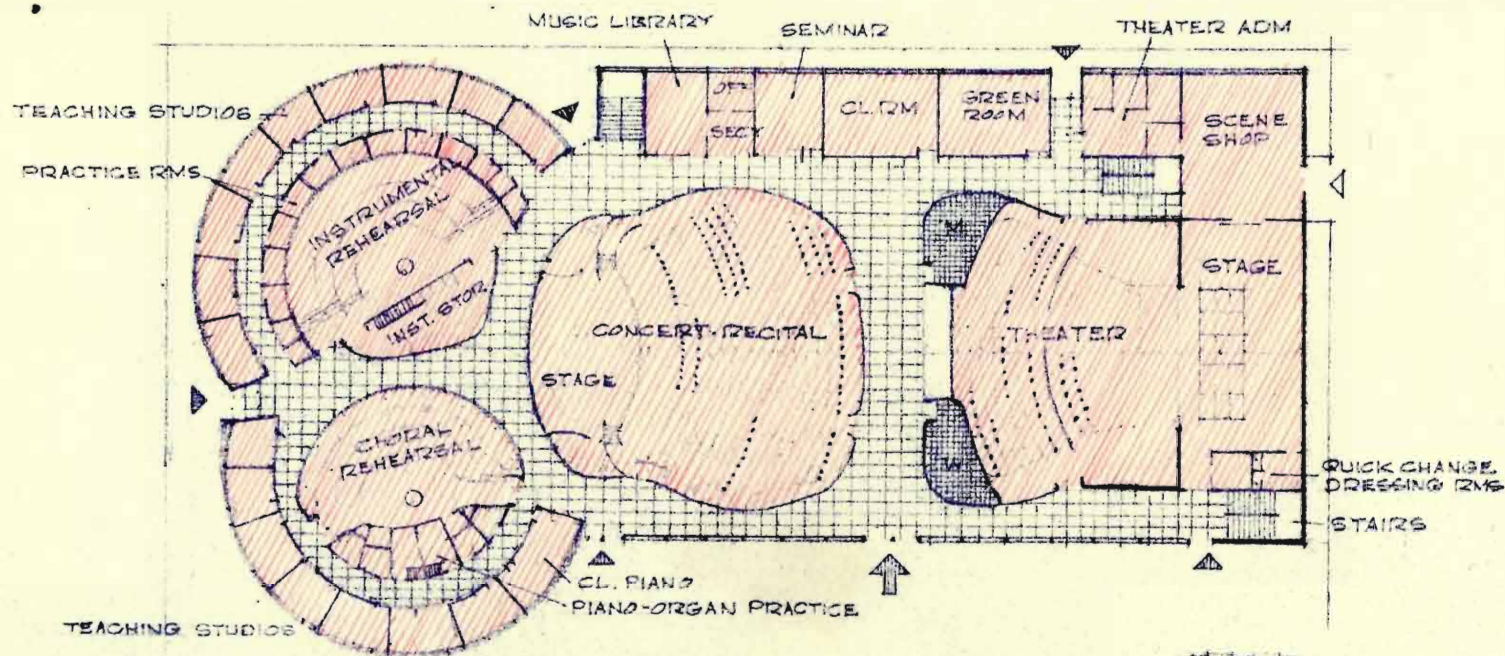
**Fine Arts Building
Architect's Drawing, 1968**



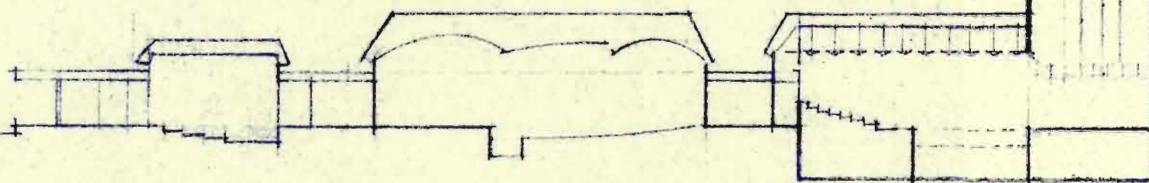
EXTERIOR VIEW

Sketches for:
FINE ARTS BUILDING
KEARNEY STATE COLLEGE
KEARNEY, NEBR.
HELLEBERG & HELLEBERG - ARCH.

**Fine Arts Building
Architect's Sketch, Exterior View**



FIRST FLOOR



SECTION

SCALE: 1" = 50'

- ASSIGNABLE AREA
INSTRUCTIONAL & LIBRARY
- ASSIGNABLE AREA
INSTRUCTION-RELATED
- NON-ASSIGNABLE
AREA

Sketches for:
FINE ARTS BUILDING
KEARNEY STATE COLLEGE
 KEARNEY, NEBR.
 HELLEBERG & HELLEBERG ARCH.

**Fine Arts Building
 Architect's Sketch, First Floor**

BOARD OF TRUSTEES
NEBRASKA
STATE COLLEGES

1969

JAMES A. LANE, PRESIDENT

J. ALAN CRAMER, VICE PRESIDENT

FRANCIS J. BROWN

HENRY I. FREED

JAMES M. KNAPP

BERNARD M. SPENCER

CECIL E. STANLEY

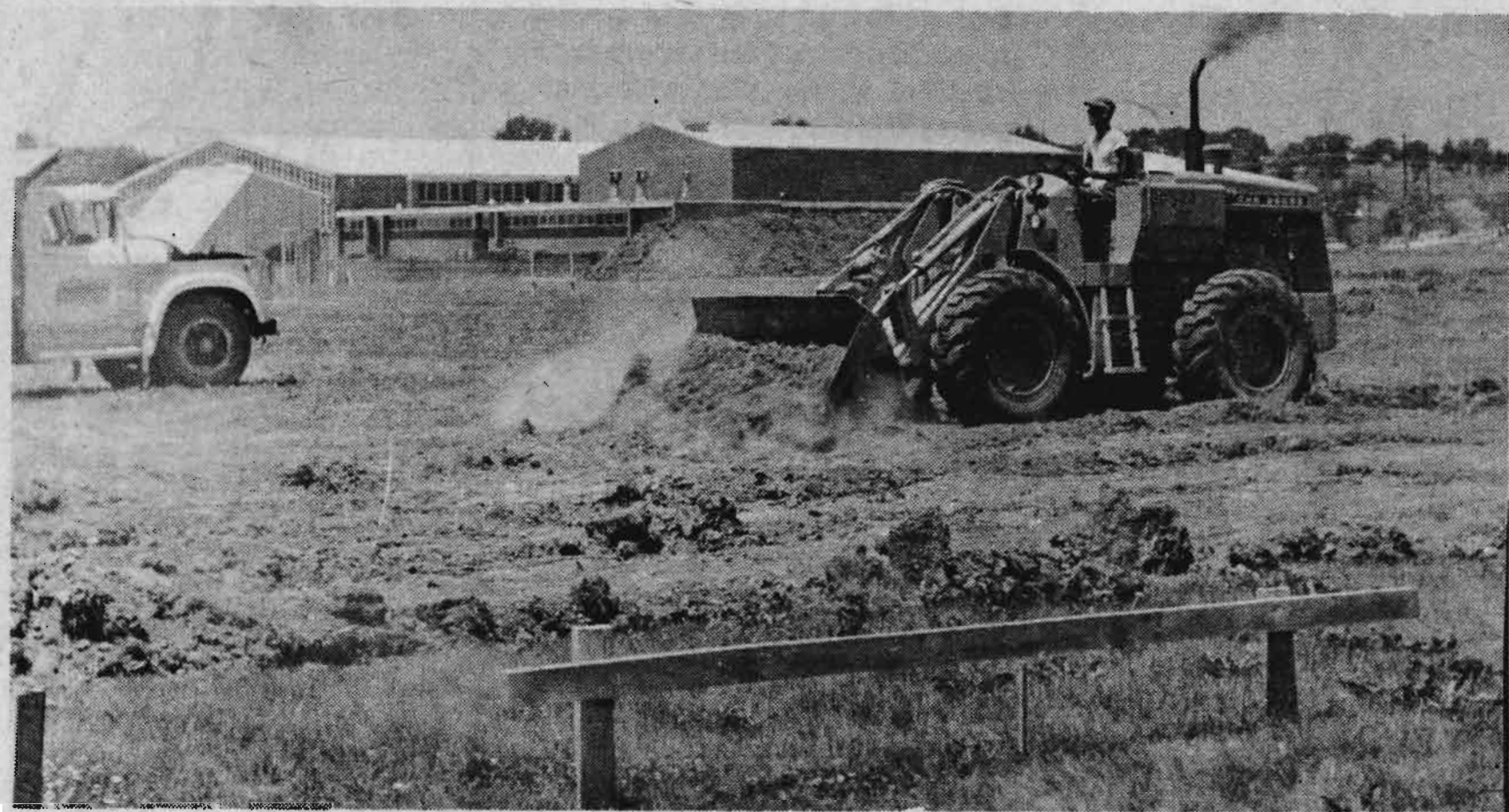
E. ALBIN LARSON, SECRETARY

MILTON J. HASSEL, PRESIDENT OF COLLEGE

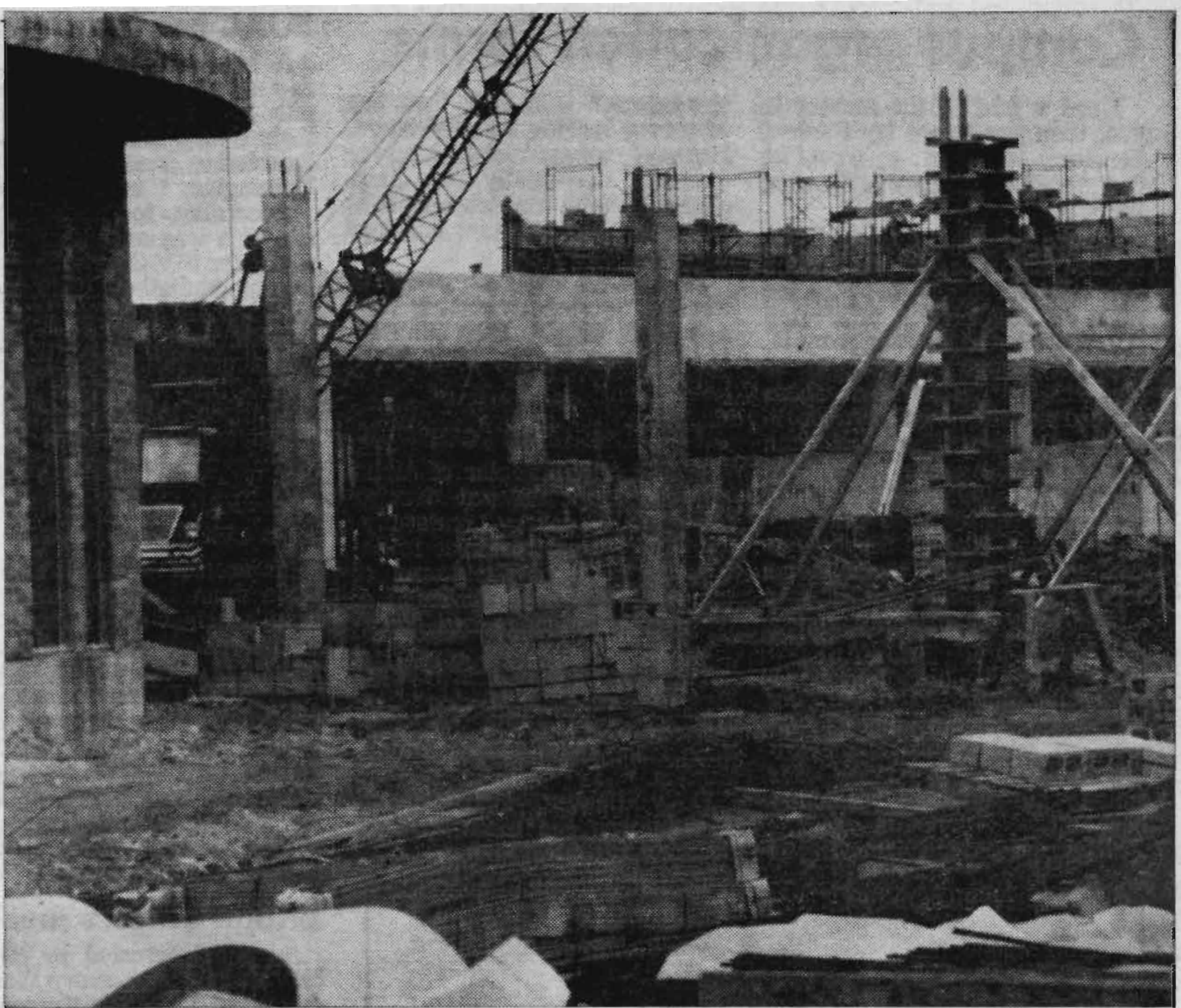
HELLEBERG & HELLEBERG, ARCHITECTS-ENGINEERS



**Fine Arts Building, 1970
View Looks to the West**



Fine Arts Building Under Construction, 1968

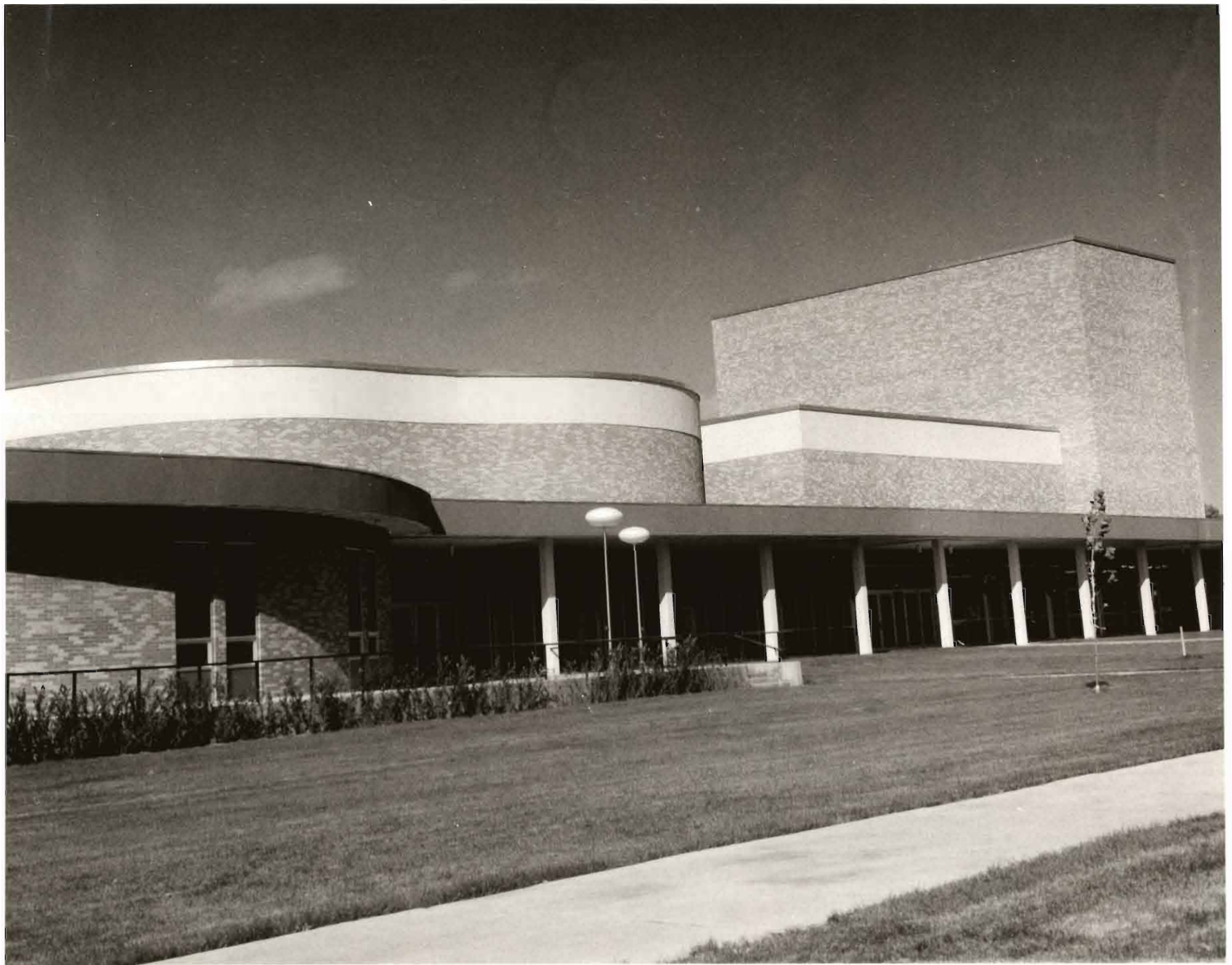


Fine Arts Building Under Construction, 1969



8 9/16 X 11 9/16

**Fine Arts Building, 1971
View Looks to the Southwest**



**Fine Arts Building, 1971
View Looks to the Northwest**



**Fine Arts Building with New Art Wing, 1980
View Looks to the Northeast**



**Fine Arts Building with New Art Wing, 1981
View Looks to the Northeast**

Dr. Gary F. Thomas, Presiding

Special Recognition for Mr. & Mrs. Dr. William Nester
Clark Yanda and Mrs. Ellen Baldwin President
Craig Kearney State College

Dr. Jim Payne, Dr. Mike Wheeler, Shelley Stueven, trumpets
Mrs. Annabell Zikmund, Deanna Long, Chris Shade, trombones



Fine Arts Building, Looking Northwest at the Northeast Corner, 2009

Higher Part is Above the Theater's Stage

Vocational Arts Building Visible Beyond Corner



Fine Arts Building, 2009



Fine Arts Building, 2009

Looking Southwest at South Part of East Elevation



Fine Arts Building, 2009
Looking South Along East Wall



Fine Arts Building, 2009

Dance Sculpture Inside East Entrance



Fine Arts Building, 2009

First Floor Corridor, Looking West



Fine Arts Building, 2009

Corridor With Practice Rooms, First Floor



Fine Arts Building, 2009

“Winged Victory” in Hallway in Art Wing

Gift of Class of 1907



Fine Arts Building, 2009

Display in Walker Gallery, Art Wing



Fine Arts Building, 2009
Looking ENE at South End



Fine Arts Building, 2009
Looking NW at 1970 Building



Fine Arts Building, 2009

Looking WNW at S Side of Art Wing



Fine Arts Building, 2009
Looking SW at N Side of Art Wing



Fine Arts Building, 2009

Looking SE at NW Corner of 1970 Building



Fine Arts Building, 2009

Looking SW at NE Corner of 1970 Building