

Men's Hall

According to Holmgren's *Kearney State College 1905-1980, A History of the First Seventy-Five Years*, "[b]uilding dormitories for students at Kearney was complicated by opposition from the Kearney citizens. When the administration would recommend to the Board, plans be made for the construction of such a facility, a delegation would call upon the Board and inform them no such facility was needed. This attitude by local citizens was responsible for the fact that no dormitories were built during the first 25 years of the school's existence. No dormitory for men was constructed until Men's Hall was built in 1939. It was dedicated on June 15, 1939, the summer Homecoming Day. A delegation of Kearney people had called on the Board, asking them to disapprove this building, but the Board felt that the need of a new dormitory for men, with dining hall, was long overdue. An investigation had revealed the deplorable condition under which some men were forced to live, in order to go to college. As early as the summer of 1922, there are accounts of men living in a "tent city" because no adequate housing could be found."

A federal WPA grant of \$175,500 was secured to help fund the Hall. The cornerstone was laid in November 1938. It was built in 1938-1939, and one worker died in an accident during construction. Upon its completion, the cafeteria moved from Green Terrace to the east wing of the first floor of Men's Hall. The Hall provided housing for 110 men students.

The Men's Hall Constitution was approved in March, 1941.

In September, 1943, the college's first Student Union opened in the basement of Men's Hall. Known as the Kampus Kave, it had a fountain-style "bar" and ping-pong tables.

Men's Hall purchased a television in 1954; in 1981 it subscribed to HBO.

Sena Lang was Men's Hall's best-known housemother, serving from 1955 to 1969. She was well thought of; in 1962, residents proposed that the Hall be renamed "Lang Hall."

In the 1965-66 school year, Men's Hall was opened to women.

Men's Hall was renovated in 1959, 1983, and 2008.



Men's Hall Under Construction, 1939



Dedication of Men's Hall, June 15, 1939

President Herbert Cushing is Second to the Right of the Speaker



Front of Color Postcard Showing Men's Hall

As Seen from the Southeast, 1939

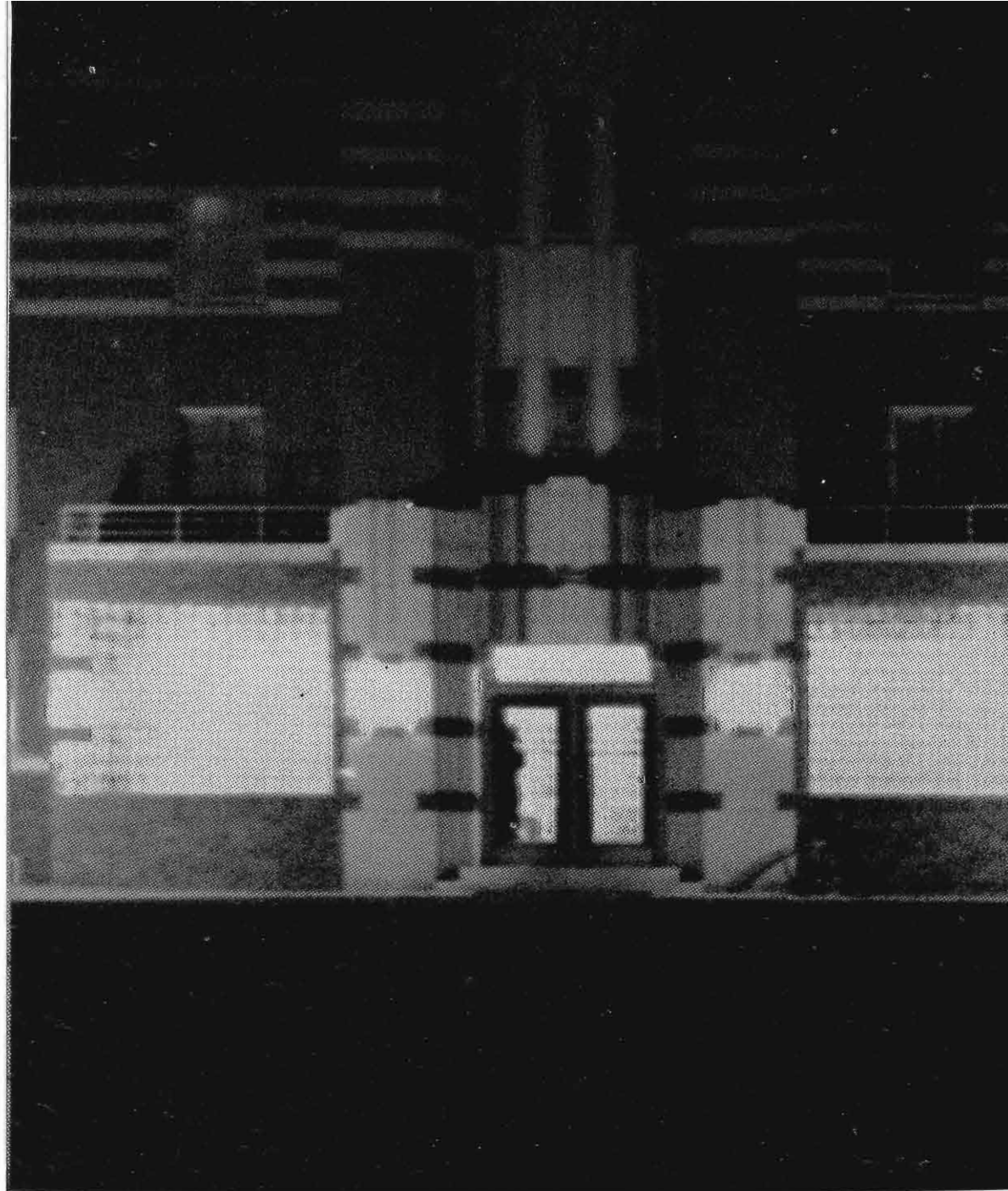
Postcard Advises "Place One Cent Stamp Here"



Men's Hall Main Dining Room, 1939-1958



Men's Hall Lobby



Main Entrance to Men's Hall at Night, 1940



Men's Hall, South Elevation, 1950



Cooks in the Kitchen in Men's Hall, 1950's



Men's Hall Cafeteria, 1957



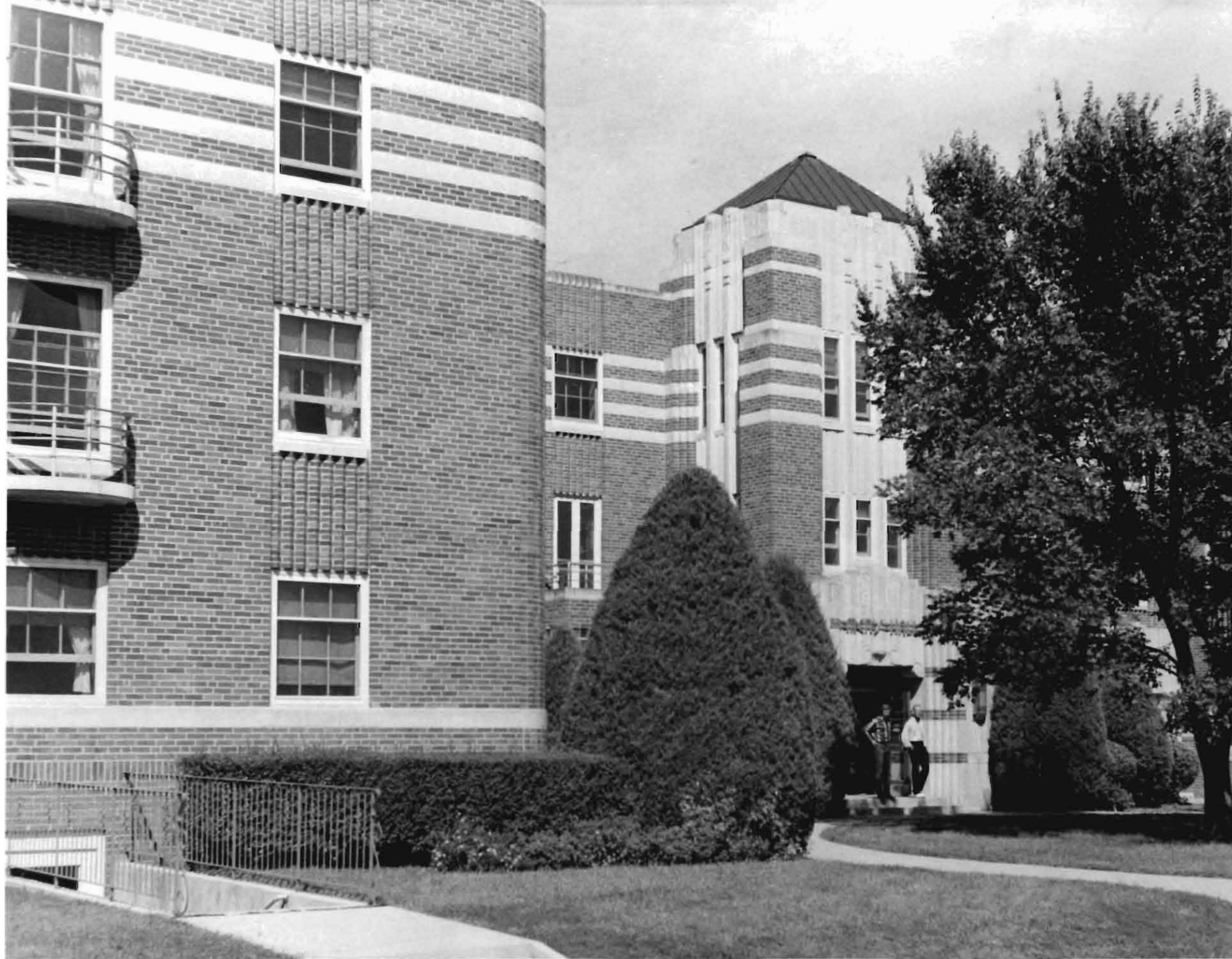
Men's Hall Display for Homecoming 1959



Back Door, Men's Hall, 1961



Men's Hall, Part of South Elevation, 1966



Men's Hall, Part of South Elevation as Seen from the Southwest, 1970



Men's Hall Winter Scene, 1980's



Part of South Elevation of Men's Hall

As Seen from the Southeast, 1990's



Part of South Elevation of Men's Hall, April 2005

The following photos were taken in April, 2009.









